

2024 年 4 月 30 日 新聞公報

香港民研發放「民情指數之按年齡或世代分析」

特別宣佈

香港民意研究所（香港民研）已於 4 月 23 日舉行記者會，發放「都市固體廢物收費」線上慎思民調 (e-Deliberative Poll) 的報告，包括量性及質性結果，並已上載不經刪剪的電腦生成討論文字紀錄及開放式問題回應至「香港民研數據查冊平台」，供有興趣人士付費下載。平台上現時合共有六套質性數據集，全部定價為會員價\$100，歡迎到民研網站 <https://www.pori.hk>選購。

最新數據

香港民研今日發放「民情指數第 6.29 號報告」，題為「民情指數之按年齡或世代分析」，屬於第二代民情指數的第二十九份報告。民情指數的正常水平設定值為 100，標準差設定為 15，請[點擊這裏](#)閱讀民情指數的計算方法。

今次報告運用了由 2007 年 7 月至 2024 年 3 月以隨機抽樣真人電話訪問的約四十萬個樣本，並以年齡及世代兩個變項劃分成不同組別作分析。年齡組別以市民於統計日期的歲數劃分，同一年齡組別於不同調查時期所包括之市民會因時間過去而改變；而世代則以出生年份劃分，同一世代所包括之市民不會隨時間而改變。

先以年齡組別分析，結果顯示，雖然自 2007 年起的整體民情有起有跌，但三個年齡組別歷年的民情指數走勢大致相同：在 2007 年下半年同時錄得較高數值後，三個組別民情在其後五年先有所下跌，後保持平穩，且組別之間差異甚少。在 2012 至 2017 年間，各組別個別發展：50 歲或以上市民民情有所改善，30-49 歲市民保持平穩，18-29 歲市民民情則繼續向下。及至 2017 年下半年林鄭月娥上任，三個組別民情均同時升至高位，但隨即步入跌軌，並於 2019 年下半年同步急挫至歷史低位，然後再逐漸回升至 2023 年的近年新高，2024 年上半年初步數字暫見平穩，沒有出現大上大落。50 歲或以上市民的心情在過去多年都相對正面，相比其他年齡組別，其民情指數於較多時間維持在正常值 100 分以上，2023 年更攀升至高於 130 分的歷史高位。相反，18-29 歲市民的心情則長期維持負面，其民情指數在 2008 年下半年後持續低於正常值水平，在 2019 年下半年更跌至只有 47 分的極低位。至於 30-49 歲市民的民情指數於歷年大部分時間均位處中間位置，但其民情指數亦長期維持於正常值水平 100 分以下。

至於世代分析，四個組別歷年的民情指數走勢同樣大致相同，其走勢及最高、最低點亦與年齡組別分析結果十分相近。「戰前一族」的民情指數除 2008 年外，於歷年均為四個組別中最高，其民情指數除 2012 下半及 2019 下半年外，均一直維持在正常值 100 分以上。整體而言，愈後出生的市民民情指數愈低：「戰後一族」比「戰前一族」低，「八十前」又比「戰後一族」低，而「八十後」的民情指數於歷年大部分時間皆為四個組別中最低。除 2023 上半年外，「八十後」的民情指數於 2009 年下半年後持續低於正常值水平，而且從 2014 上半年起與另外三個組別維持較大距離。2024 年初步數字跟 2023 下半年變化不大，隨後的民情走勢有待觀察。

至於 2007 年以前的情況，就有待將來再深入分析。以下是有關分析的數表及圖表：

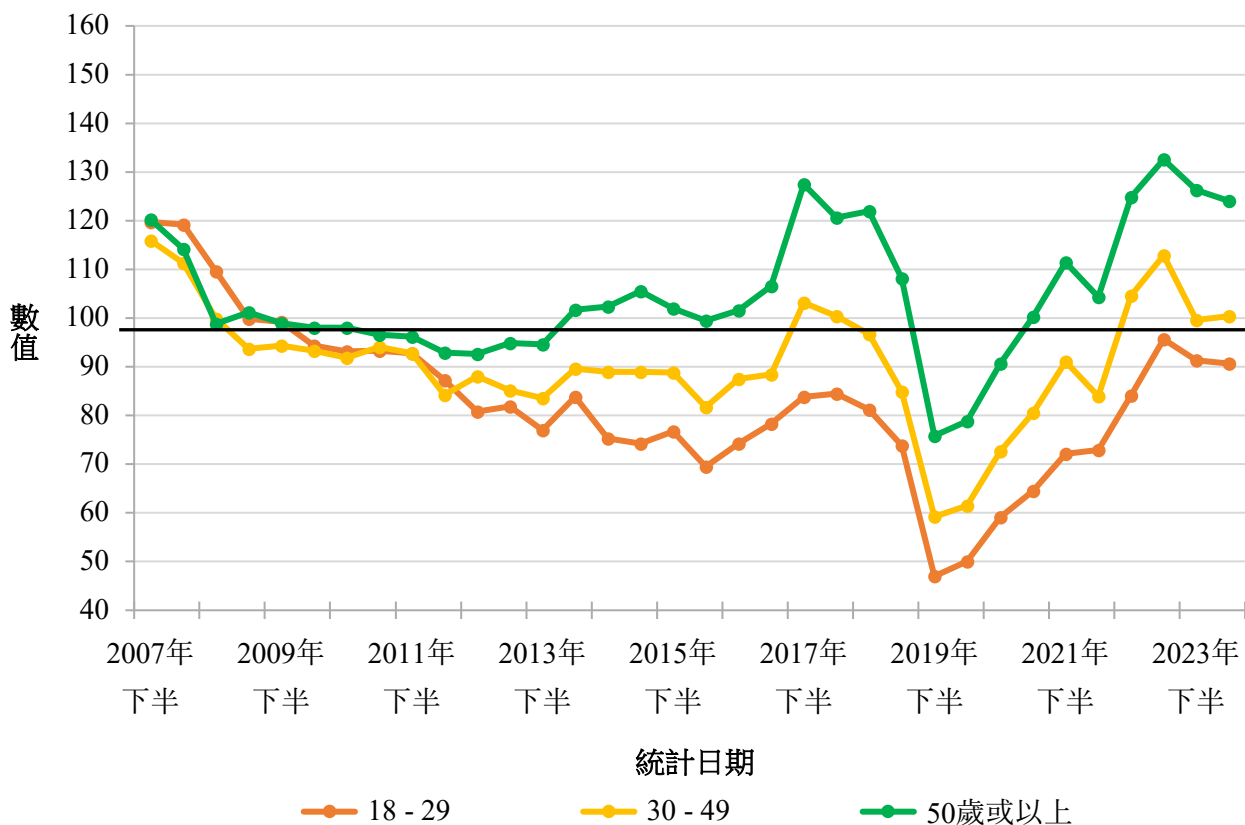
數表：不同年齡市民之民情指數（2007-2024 半年平均數）

半年期	樣本數目	18-29 歲	30-49 歲	50 歲或以上
2007 年下半	13,157	119.7	115.9	120.2
2008 年上半	15,361	119.1	111.2	114.3
2008 年下半	14,302	109.6	99.9	98.8
2009 年上半	14,138	99.9	93.7	101.2
2009 年下半	14,104	99.3	94.4	99.0
2010 年上半	12,150	94.4	93.2	98.0
2010 年下半	14,144	93.1	91.9	98.1
2011 年上半	13,291	93.3	94.1	96.6
2011 年下半	15,209	92.7	92.7	96.2
2012 年上半	14,259	87.3	84.2	92.9
2012 年下半	12,174	80.8	88.0	92.7
2013 年上半	12,229	81.9	85.2	94.9
2013 年下半	12,154	77.0	83.6	94.6
2014 年上半	12,255	83.8	89.6	101.7
2014 年下半	12,147	75.3	89.0	102.4
2015 年上半	12,349	74.2	89.0	105.5
2015 年下半	11,108	76.7	88.8	102.0
2016 年上半	12,088	69.5	81.7	99.5
2016 年下半	12,074	74.3	87.5	101.6
2017 年上半	12,128	78.3	88.4	106.6
2017 年下半	12,200	83.8	103.2	127.4
2018 年上半	12,092	84.5	100.3	120.7
2018 年下半	12,072	81.1	96.7	121.9
2019 年上半	12,151	73.9	84.9	108.1
2019 年下半	12,297	47.0	59.2	75.8
2020 年上半	12,062	50.1	61.5	78.8
2020 年下半	12,206	59.1	72.7	90.7
2021 年上半	12,086	64.5	80.6	100.3
2021 年下半	12,080	72.1	91.1	111.4
2022 年上半	12,059	72.9	84.0	104.3
2022 年下半	6,107	84.0	104.7	124.8
2023 年上半	6,056	95.6	112.8	132.6
2023 年下半	6,689	91.4	99.6	126.3
2024 年上半 (初步數字)	2,339	90.6	100.4	124.1
樣本總數	403,317	66,259	120,319	209,729

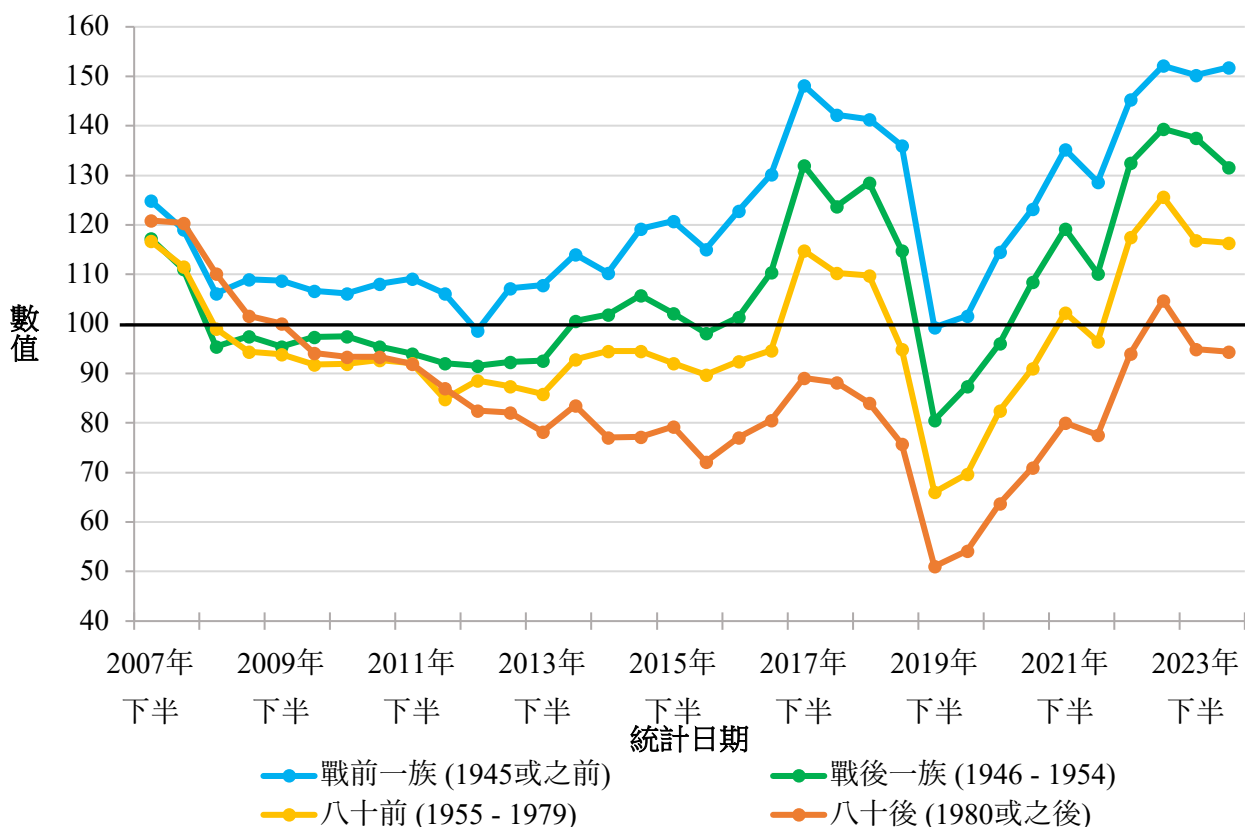
數表：不同世代市民之民情指數（2007-2024 半年平均數）

半年期	樣本數目	戰前一族 (1945 或之前)	戰後一族 (1946-1954)	八十前 (1955-1979)	八十後 (1980 或之後)
2007 年下半	13,157	124.9	117.3	116.8	120.9
2008 年上半	15,361	119.1	111.1	111.6	120.4
2008 年下半	14,302	106.1	95.4	99.1	110.2
2009 年上半	14,138	109.0	97.5	94.4	101.6
2009 年下半	14,104	108.8	95.4	93.9	100.1
2010 年上半	12,150	106.7	97.4	91.8	94.1
2010 年下半	14,144	106.1	97.5	91.9	93.3
2011 年上半	13,291	108.2	95.4	92.8	93.3
2011 年下半	15,209	109.2	94.1	92.1	92.0
2012 年上半	14,259	106.2	92.0	84.8	87.0
2012 年下半	12,174	98.6	91.5	88.6	82.5
2013 年上半	12,229	107.2	92.3	87.4	82.1
2013 年下半	12,154	107.9	92.6	85.8	78.2
2014 年上半	12,255	114.0	100.6	92.8	83.6
2014 年下半	12,147	110.3	101.8	94.5	77.0
2015 年上半	12,349	119.3	105.7	94.6	77.2
2015 年下半	11,108	120.7	102.2	92.0	79.3
2016 年上半	12,088	115.1	98.2	89.8	72.2
2016 年下半	12,074	122.8	101.4	92.5	77.1
2017 年上半	12,128	130.3	110.4	94.6	80.6
2017 年下半	12,200	148.2	132.0	114.8	89.2
2018 年上半	12,092	142.2	123.8	110.3	88.2
2018 年下半	12,072	141.3	128.5	109.7	84.1
2019 年上半	12,151	136.0	114.8	94.9	75.8
2019 年下半	12,297	99.3	80.6	66.0	51.0
2020 年上半	12,062	101.7	87.5	69.7	54.2
2020 年下半	12,206	114.6	96.1	82.5	63.8
2021 年上半	12,086	123.2	108.5	91.1	71.0
2021 年下半	12,080	135.2	119.2	102.3	80.0
2022 年上半	12,059	128.7	110.1	96.4	77.5
2022 年下半	6,107	145.4	132.6	117.6	94.0
2023 年上半	6,056	152.1	139.4	125.7	104.7
2023 年下半	6,689	150.2	137.5	116.8	94.9
2024 年上半 (初步數字)	2,339	151.9	131.6	116.4	94.4
樣本總數	403,317	48,109	59,552	152,358	92,730

圖表：不同年齡市民之民情指數走勢（2007-2024 半年平均數）



圖表：不同世代市民之民情指數走勢（2007-2024 半年平均數）



2024年5-6月新聞發佈活動預告（暫定）

- 5月7日（星期二）新聞公報和數據更新：民情指數之按教育程度分析
- 5月14日（星期二）新聞公報和數據更新：民情指數之按性別與年齡分析
- 5月21日（星期二）新聞公報和數據更新：特首及政府民望
- 5月30日（星期四）下午三時新聞發佈會：信任及信心指標、社會幸福指標
- 6月4日（星期二）新聞公報和數據更新：民情指數之按經濟活動狀況分析
- 6月11日（星期二）新聞公報和數據更新：民情指數之按統獨傾向分析
- 6月18日（星期二）新聞公報和數據更新：特首及政府民望
- 6月26日（星期三）下午三時新聞發佈會：「香港民研意見群組」網上問卷調查結果、「民情指數第6.34號報告」



HONG KONG PUBLIC OPINION RESEARCH INSTITUTE
香港民意研究所

Tel 電話: (852) 3844 3111

Fax 傳真: (852) 3705 3361

Website 網址: <https://www.pori.hk>

Address: Units 9-11, 6/F, Tower B, Southmark, 11 Yip Hing Street, Wong Chuk Hang

地址: 黃竹坑業興街 11 號南滙廣場 B 座 6 樓 9-11 室

Press Release on April 30, 2024

HKPORI releases “PSI per Age or Generation”

Special Announcement

Hong Kong Public Opinion Research Institute (HKPORI) held a press conference on April 23 to release the report of an e-Deliberative Poll (e-DP) on “Municipal Solid Waste Charging”, including both quantitative and qualitative results. We have already uploaded the unedited computer-generated transcript and open-ended responses to our “HKPORI Poll Data Enquiry Platform” for interested parties to purchase. There are currently six sets of qualitative datasets on the platform, all available for purchase at member price of \$100, welcome to visit our website at <https://www.pori.hk/>.

Latest Findings

HKPORI today releases its “PSI Report No. 6.29”, titled “PSI per Age or Generation”, which is the twenty-ninth release of PSI v2.0. The normal level of the PSI is set at 100 and standard deviation at 15. Please [click here](#) to read the computation method of the PSI.

This report utilizes around 400,000 random telephone survey samples obtained through real person telephone interviews from July 2007 to March 2024 and have them categorized based on respondent’s age and generation for further analyses. Age groups are categorized according to people’s years of age at the enumeration date, and people in the same age group included in different survey periods may change over time, while generations are categorized according to their year of birth, and people under the same generation will remain unchanged over time.

Regarding age group analysis, results show that despite the ups and downs of overall public sentiment since 2007, the trends of PSI among the three age groups are highly similar over the years. After registering relatively high scores in 2007H2, public sentiment of all three groups first dropped and then remained rather stable in the five years that followed, with minimal difference between groups. Between 2012 and 2017, the three groups developed in separate directions: sentiment of people aged 50 or above kept improving, those aged 30-49 did not change much, while sentiment of people aged 18-29 continued to move downward. In 2017H2, all three groups registered their higher PSI scores when Carrie Lam took office. But soon started to drop and in 2019H2, their PSI all plummeted to their historical lows, then gradually rebounded to a recent record high in 2023. Preliminary figures of 2024H1 show stability, without any major ups or downs. People aged 50 or above have been feeling pretty good over the past many years, with their PSI staying above the normal level of 100 more often than the other age groups and even climbing over 130 marks at its all-time historical high in 2023. On the contrary, people aged 18-29 have been feeling quite negatively the whole time, with their PSI remaining below the normal level after 2008H2 and even plummeting to an extremely low level at only 47 marks in 2019H2. For people aged 30-49, their PSI has stayed in the middle position most of the time, with their figures also constantly staying below the normal level of 100.

As for generation analysis, the trends of PSI among the four generation groups are more or less the same over the years. Their overall trends, highest and lowest points are highly comparable with those of the age group analysis. The “pre-war” generation has the highest PSI among all four groups over

the years except in 2008. Their PSI has stayed above the normal level of 100 except in 2012H2 and 2019H2. The later the birth date, the lower their PSI: the “post-war” generation got lower PSI than the “pre-war” generation, the “pre-80s” got lower PSI than the “post-war” generation, while the “post-80s” has the lowest PSI among all four groups most of the time over the years. Except in 2023H1, the PSI of the “post-80s” has stayed below the normal level since 2009H2 and has maintained a relatively large distance with the other three groups since 2014H1. The preliminary figures for 2024 have not changed much from those of 2023H2, and the upcoming public sentiment trend is yet to be seen.

As for the situation before 2007, we will leave them to future analyses. The following are the summary table and chart of the analysis:

Summary table: PSI among people of different age groups (2007-2024; half-yearly averages)

Half-year period	Sample size	Age 18-29	Age 30-49	Age 50 or above
2007H2	13,157	119.7	115.9	120.2
2008H1	15,361	119.1	111.2	114.3
2008H2	14,302	109.6	99.9	98.8
2009H1	14,138	99.9	93.7	101.2
2009H2	14,104	99.3	94.4	99.0
2010H1	12,150	94.4	93.2	98.0
2010H2	14,144	93.1	91.9	98.1
2011H1	13,291	93.3	94.1	96.6
2011H2	15,209	92.7	92.7	96.2
2012H1	14,259	87.3	84.2	92.9
2012H2	12,174	80.8	88.0	92.7
2013H1	12,229	81.9	85.2	94.9
2013H2	12,154	77.0	83.6	94.6
2014H1	12,255	83.8	89.6	101.7
2014H2	12,147	75.3	89.0	102.4
2015H1	12,349	74.2	89.0	105.5
2015H2	11,108	76.7	88.8	102.0
2016H1	12,088	69.5	81.7	99.5
2016H2	12,074	74.3	87.5	101.6
2017H1	12,128	78.3	88.4	106.6
2017H2	12,200	83.8	103.2	127.4
2018H1	12,092	84.5	100.3	120.7
2018H2	12,072	81.1	96.7	121.9
2019H1	12,151	73.9	84.9	108.1
2019H2	12,297	47.0	59.2	75.8
2020H1	12,062	50.1	61.5	78.8
2020H2	12,206	59.1	72.7	90.7
2021H1	12,086	64.5	80.6	100.3
2021H2	12,080	72.1	91.1	111.4
2022H1	12,059	72.9	84.0	104.3

Half-year period	Sample size	Age 18-29	Age 30-49	Age 50 or above
2022H2	6,107	84.0	104.7	124.8
2023H1	6,056	95.6	112.8	132.6
2023H2	6,689	91.4	99.6	126.3
2024H1 (Preliminary figures)	2,339	90.6	100.4	124.1
Total sample size	403,317	66,259	120,319	209,729

**Summary table: PSI among different generations
(2007-2024; half-yearly averages)**

Half-year period	Sample size	Pre-war (1945 or before)	Post-war (1946-1954)	Pre-80s (1955-1979)	Post-80s (1980 or after)
2007H2	13,157	124.9	117.3	116.8	120.9
2008H1	15,361	119.1	111.1	111.6	120.4
2008H2	14,302	106.1	95.4	99.1	110.2
2009H1	14,138	109.0	97.5	94.4	101.6
2009H2	14,104	108.8	95.4	93.9	100.1
2010H1	12,150	106.7	97.4	91.8	94.1
2010H2	14,144	106.1	97.5	91.9	93.3
2011H1	13,291	108.2	95.4	92.8	93.3
2011H2	15,209	109.2	94.1	92.1	92.0
2012H1	14,259	106.2	92.0	84.8	87.0
2012H2	12,174	98.6	91.5	88.6	82.5
2013H1	12,229	107.2	92.3	87.4	82.1
2013H2	12,154	107.9	92.6	85.8	78.2
2014H1	12,255	114.0	100.6	92.8	83.6
2014H2	12,147	110.3	101.8	94.5	77.0
2015H1	12,349	119.3	105.7	94.6	77.2
2015H2	11,108	120.7	102.2	92.0	79.3
2016H1	12,088	115.1	98.2	89.8	72.2
2016H2	12,074	122.8	101.4	92.5	77.1
2017H1	12,128	130.3	110.4	94.6	80.6
2017H2	12,200	148.2	132.0	114.8	89.2
2018H1	12,092	142.2	123.8	110.3	88.2
2018H2	12,072	141.3	128.5	109.7	84.1
2019H1	12,151	136.0	114.8	94.9	75.8
2019H2	12,297	99.3	80.6	66.0	51.0
2020H1	12,062	101.7	87.5	69.7	54.2
2020H2	12,206	114.6	96.1	82.5	63.8
2021H1	12,086	123.2	108.5	91.1	71.0
2021H2	12,080	135.2	119.2	102.3	80.0
2022H1	12,059	128.7	110.1	96.4	77.5
2022H2	6,107	145.4	132.6	117.6	94.0

Half-year period	Sample size	Pre-war (1945 or before)	Post-war (1946-1954)	Pre-80s (1955-1979)	Post-80s (1980 or after)
2023H1	6,056	152.1	139.4	125.7	104.7
2023H2	6,689	150.2	137.5	116.8	94.9
2024H1 (Preliminary figures)	2,339	151.9	131.6	116.4	94.4
Total sample size	403,317	48,109	59,552	152,358	92,730

**Chart: PSI among people of different age groups
(2007-2024; half-yearly averages)**

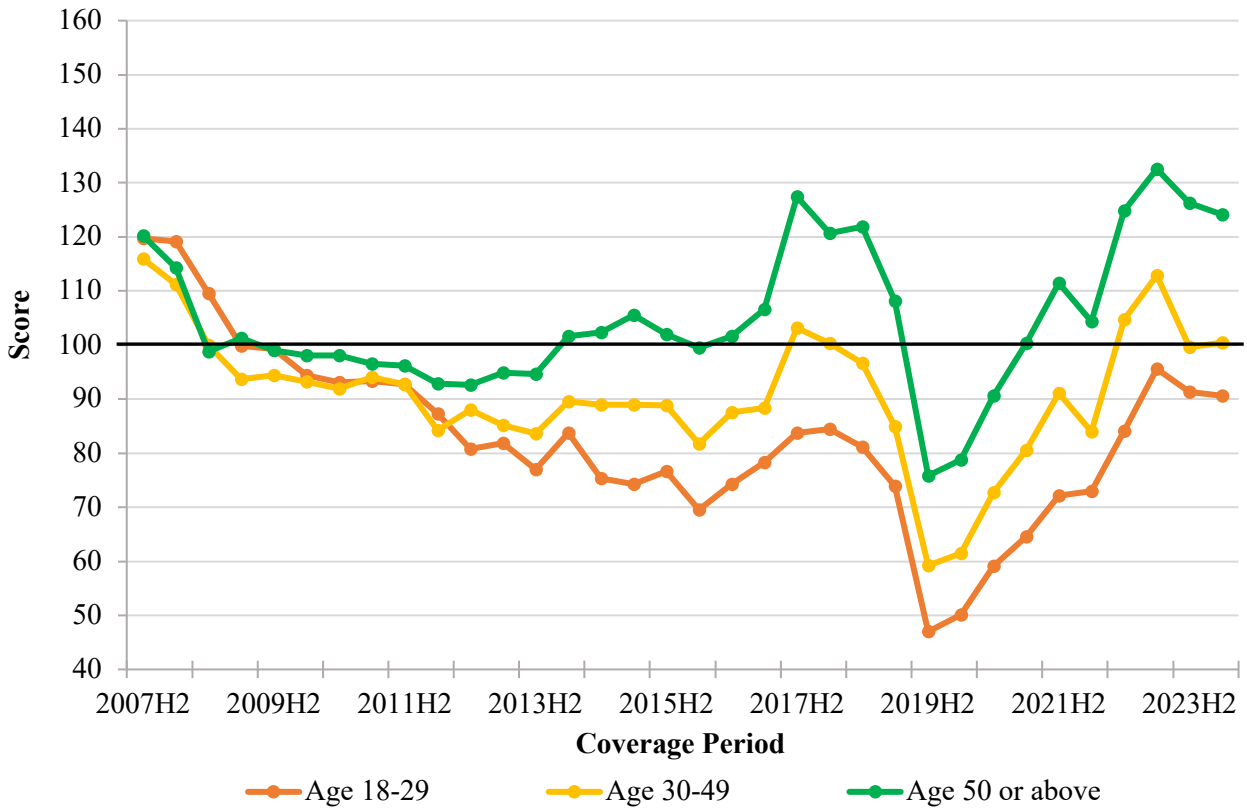
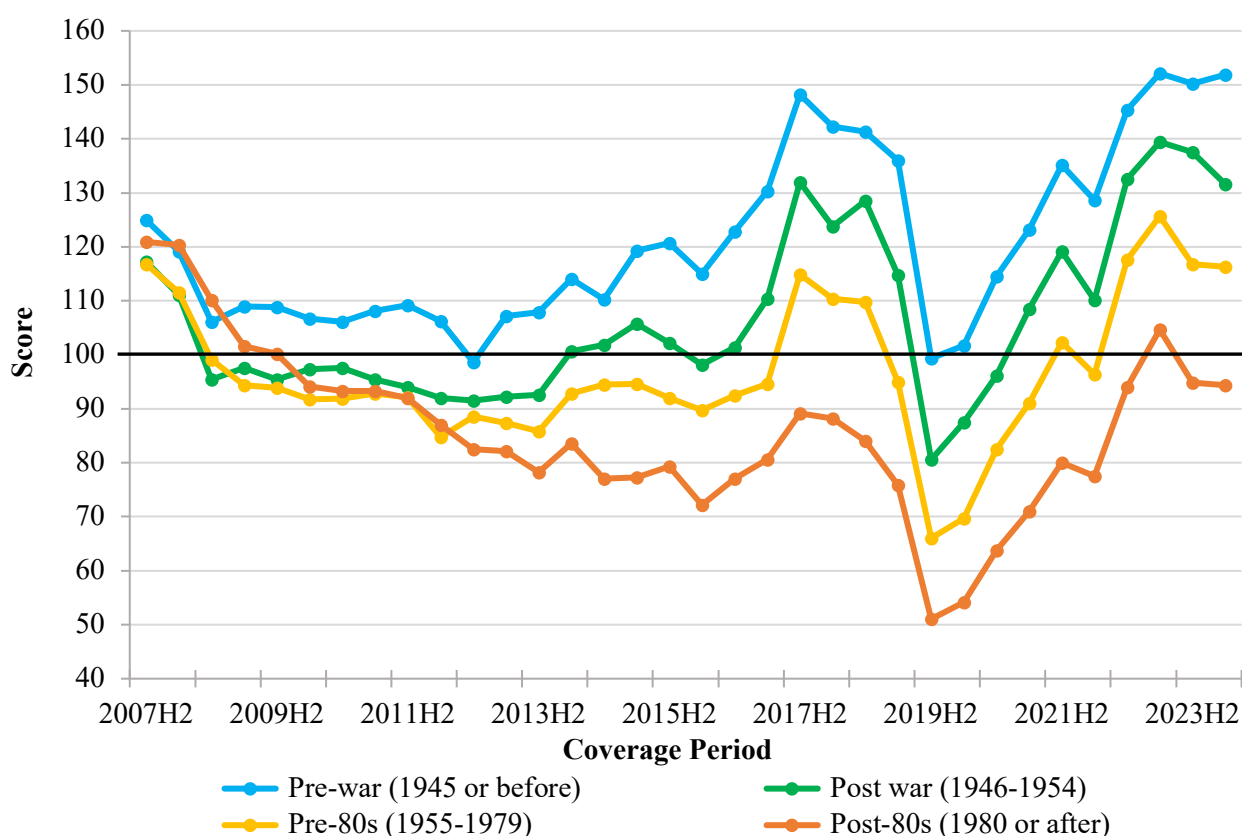


Chart: PSI among different generations
(2007-2024; half-yearly averages)



Press Events Forecast for May-June 2024 (Tentative)

- May 7 (Tuesday) press release and figures update: PSI per Educational Attainment
- May 14 (Tuesday) press release and figures update: PSI per gender and age
- May 21 (Tuesday) press release and figures update: Popularities of CE and SAR Government
- May 30 (Thursday) at 15:00, press conference: Trust and Confidence Indicators, Social Well-being Indicators
- June 4 (Tuesday) press release and figures updates: PSI per Economic Activity Status
- June 11 (Tuesday) press release and figures update: PSI per Centrality
- June 18 (Tuesday) press release and figures update: Popularities of CE and SAR Government
- June 26 (Wednesday) at 15:00, press conference: “POP Panel” Online Survey Results, “PSI Report No. 6.34”