

2023 年 9 月 12 日 新聞公報

香港民研發放「民情指數之出生地分析」

特別宣佈

自七月底啟動「香港民研數據查冊平台」以來，香港民意研究所（香港民研）不斷改善查冊人士的用戶經驗及擴展平台的內容，繼在八月底推出「身份認同感」收費項目 16 條後，上周再推出兩個收費項目，分別為：1) 六月份紀律部隊及駐港解放軍民望及 2) 七月份市民對各地政府及人民的觀感調查。及至今天，查冊平台已有免費題目 45 條，收費題目 40 條。民研會員可繼續以半價再半價徵購收費項目，即每題\$2,500。香港民研要求所有查冊人士，承諾不會把所獲資料轉送或轉售給任何人士。查詢電郵：enquiry@pori.hk。

最新數據

香港民研今日發放「民情指數第 6.8 號報告」，題為「民情指數之出生地分析」，屬於第二代民情指數的第八份報告。民情指數的正常水平設定值為 100，標準差設定為 15，請[點擊這裏](#)閱讀民情指數的計算方法。

是次數據分析的覆蓋範圍，是由 2018 年 7 月至 2023 年 8 月之間，以隨機抽樣真人電話訪問了超過 10 萬人。結果顯示，三個出生地組別近年的民情指數走勢大致相同，2019 年下半年為全部組別最低點，而 2023 上半或下半年則為最高點。值得注意的是，在香港出生者近年的民情指數長期低於 100 分的正常值，直至約一年前才攀上 100 分或以上的水平，但仍然位居另外兩個出生地組別之下；相反，在中國大陸出生者的民情指數則一直為三者中最高，直至 2022 年下半年不再居首。至於其他地方出生者，其民情指數大部份時間也維持在中間位置，其走勢在 2018 至 2022 年與中國大陸組別較為相似，但 2022 年下半年開始已追平甚至超越前者，成為三者中民情指數最高分的組別。

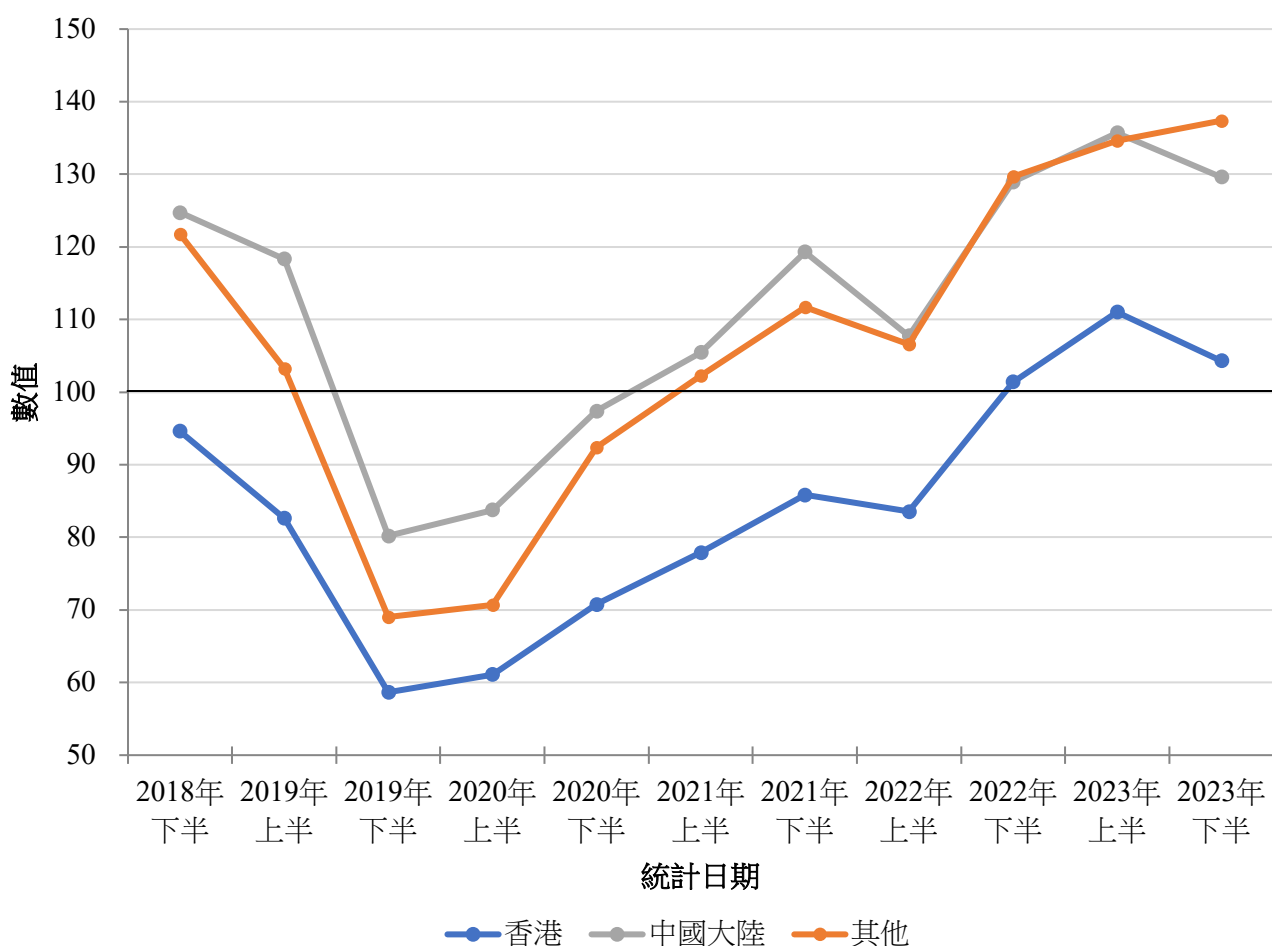
至於 2018 年以前的情況，就有待將來再深入分析。以下是有關分析的數表及圖表：

數表：最近五年不同出生地市民之民情指數（2018-2023 半年平均數）

半年期	樣本數目	香港	中國大陸	其他
2018 年下半	10,069	94.6	124.7	121.8
2019 年上半	12,151	82.6	118.3	103.2
2019 年下半	12,298	58.7	80.2	69.0
2020 年上半	12,062	61.1	83.8	70.7
2020 年下半	12,206	70.8	97.4	92.4
2021 年上半	12,086	77.9	105.4	102.2
2021 年下半	12,080	85.8	119.3	111.7

半年期	樣本數目	香港	中國大陸	其他
2022 年上半	12,059	83.6	107.7	106.6
2022 年下半	6,107	101.4	129.0	129.7
2023 年上半	6,056	111.0	135.7	134.6
2023 年下半 (初步數字)	2,009	104.3	129.6	137.4
樣本總數	109,183	70,179	34,548	3,378

圖表：最近五年不同出生地市民之民情指數走勢（2018-2023 半年平均數）



香港民研九月份新聞發佈活動（暫定）

- 9月5日（星期二）新聞公報和數據更新：民情指數按月分析
- 9月12日（星期二）新聞公報和數據更新：民情指數之出生地分析
- 9月19日（星期二）新聞公報和數據更新：民情指數之房屋類型及擁有權分析
- 9月28日（星期四）下午三時新聞發佈會：特首、政府及司局長民望



Tel 電話: (852) 3844 3111

Fax 傳真: (852) 3705 3361

Website 網址: <https://www.pori.hk>

Address: Units 9-11, 6/F, Tower B, Southmark, 11 Yip Hing Street, Wong Chuk Hang

地址: 黃竹坑業興街 11 號南滙廣場 B 座 6 樓 9-11 室

HONG KONG PUBLIC OPINION RESEARCH INSTITUTE
香港民意研究所

Press Release on September 12, 2023

HKPORI releases “PSI per place of birth”

Special Announcement

Since the launch of “HKPORI Poll Data Enquiry System” in late July, the Hong Kong Public Opinion Research Institute (HKPORI) has continued to improve the user experience of the data enquirers and expand the contents of the platform. On top of the 16 questions on ethnic identity made available for purchase in late August, two more paid items were added to the paid item list last week. They are: 1) popularity of disciplinary forces and People’s Liberation Army (PLA) Hong Kong Garrison of our June survey, and 2) people’s feeling towards different governments and peoples of our July survey. As of today, there are a total of 45 questions available for free download and 40 questions for purchase on the platform. HKPORI members continue to enjoy 75% off for paid items, meaning \$2,500 per question. HKPORI requires all data acquirers to pledge that they will not transfer or resell the information to anyone. For enquiries, please email to enquiry@pori.hk.

Latest Findings

HKPORI today releases its “PSI Report No. 6.8”, titled “PSI per place of birth”, which is the eighth release of PSI v2.0. The normal level of the PSI is set at 100 and standard deviation at 15. Please [click here](#) to read the computation method of the PSI.

This analysis covers over 100,000 random telephone survey samples obtained through real person telephone interviews from July 2018 to August 2023. Results show that the trends of PSI among the three place-of-birth groups are highly similar in recent years, with 2019H2 as their lowest point, and 2023H1/H2 as their highest points in common. It is noticeable that in the past few years, PSI of those born in Hong Kong has always stayed below the normal level of 100 until about a year ago when it climbed up to the level of 100 or above, but it is still lower than the other two birth-place groups. On the contrary, the PSI of those born in Mainland China has been the highest among the three until the second half of 2022 when it no longer tops the list. As for people born in other places, their PSI has stayed in the middle position for most of the time. Their trend is more similar to that of the Mainland China group during 2018 to 2022, but starting from 2022H2, they have already tied or even surpassed the former group, becoming the highest PSI group among the three.

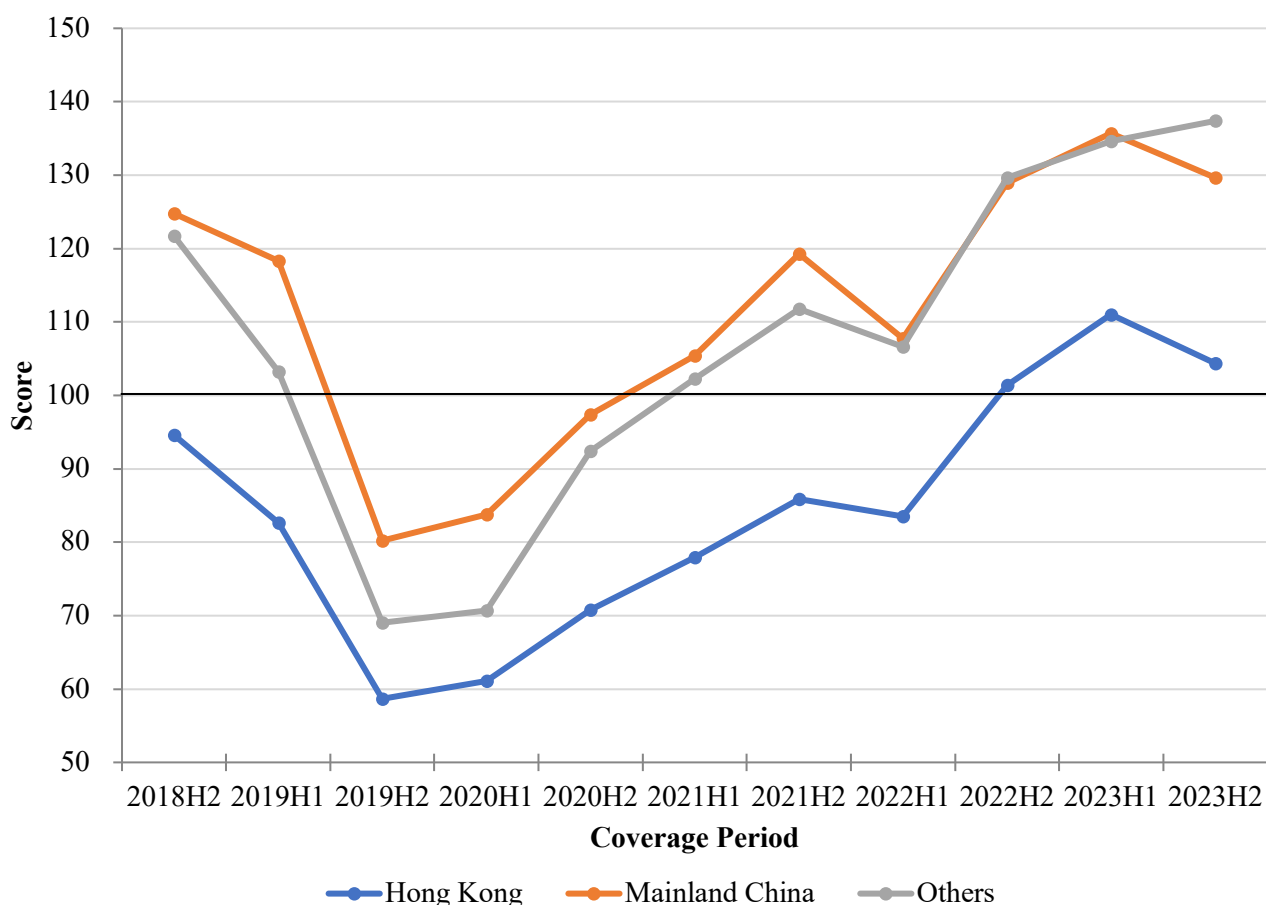
As for the situation before 2018, we will leave them to future analyses. The following are the summary table and chart of the analysis:

Summary table: PSI among people from different places of birth over the past five years (2018-2023; half-yearly averages)

Half-year period	Sample size	Hong Kong	Mainland China	Others
2018H2	10,069	94.6	124.7	121.8

Half-year period	Sample size	Hong Kong	Mainland China	Others
2019H1	12,151	82.6	118.3	103.2
2019H2	12,298	58.7	80.2	69.0
2020H1	12,062	61.1	83.8	70.7
2020H2	12,206	70.8	97.4	92.4
2021H1	12,086	77.9	105.4	102.2
2021H2	12,080	85.8	119.3	111.7
2022H1	12,059	83.6	107.7	106.6
2022H2	6,107	101.4	129.0	129.7
2023H1	6,056	111.0	135.7	134.6
2023H2 (Preliminary figures)	2,009	104.3	129.6	137.4
Total sample size	109,183	70,179	34,548	3,378

**Chart: PSI among people from different places of birth over the past five years
(2018-2023; half-yearly averages)**



HKPORI Press Events in September (Tentative)

- September 5 (Tuesday) press release and figures update: Monthly PSI figures
- September 12 (Tuesday) press release and figures update: PSI per place of birth
- September 19 (Tuesday) press release and figures update: PSI per housing type and ownership

- September 28 (Thursday) at 15:00, press conference: Popularities of CE, SAR Government and principal officials