



HONG KONG PUBLIC OPINION RESEARCH INSTITUTE  
香港民意研究所

---

# **Hong Kong Public Opinion Program of Hong Kong Public Opinion Research Institute**

---

**PopPanel Research Report No. 118 cum  
Community Democracy Project Research Report No. 76  
cum Community Health Project Research Report No. 72**

---

**Survey Date: 29 November to 20 December 2021**

**Release Date: 21 December 2021**

Copyright of this report was generated by the Hong Kong Public Opinion Program (HKPOP) and opened to the world.  
HKPOP proactively promotes open data, open technology and the free flow of ideas, knowledge and information.  
The predecessor of HKPOP was the Public Opinion Programme at The University of Hong Kong (HKUPOP).  
“POP” in this publication may refer to HKPOP or HKUPOP as the case may be.

## Research Background

Initiated by the Hong Kong Public Opinion Research Institute (HKPORI), the “Community Integration through Cooperation and Democracy, CICD” Project (or the “Community Democracy Project”) aims to provide a means for Hongkongers to re-integrate ourselves through mutual respect, rational deliberations, civilized discussions, personal empathy, social integration, and when needed, resolution of conflicts through democratic means. It is the rebuilding of our Hong Kong society starting from the community level following the spirit of science and democracy. For details, please visit: <https://www.pori.hk/cicd>.

The surveys of Community Democracy (CD) Project officially started on 3 January 2020, targeting members of “HKPOP Panel” established by HKPORI in July 2019, including “Hong Kong People Representative Panel” (Probability-based Panel) and “Hong Kong People Volunteer Panel” (Non-probability-based Panel). This report also represents Report No. 118 under HKPOP Panel survey series, as well as Report No. 76 under the CD Project survey series. Since CD Project aims to gauge the opinions of members in different communities, HKPORI needs to continuously recruit new panel members and map their profile with their respective constituency areas to form “HKPOP Community Panel” including “Community Representative Panel” and “Community Volunteer Panel” first, and then conduct the research.

In view of the outbreak of Novel Coronavirus (also known as “Wuhan Pneumonia”) in late January 2020, HKPOP kick-started the “Community Democracy Project: Community Health Module” or “Community Health Project” using a PopPanel survey design to study the public’s views on the epidemic and the Government’s relevant policies using small communities such as housing estates as the unit of analysis. The survey covers people’s views on their perceived chance of contracting pneumonia, appraisal on the government’s handling of the disease, impacts of the border closure, calls for strike by frontline medical staff, community outbreak, work-from-home arrangement, immigration controls, general use of face masks as well as the government’s implementation of relevant policies. This is the Report No. 72 under the Community Health Project survey series. The special feature of the Community Health Project is the lowering of respondents’ age bracket to 12 years old, in order to obtain more comprehensive samples.

HKPOP sent out emails to all panel members at the beginning of the survey, inviting them to fill in the questionnaire at the designated online platform. Members were allowed to make repeated submissions, while only the last submission of each individual member would be used for analysis.

## Contact Information

Herewith the contact information of the “Community Health survey”:

**Table 1: Detailed Contact Information**

Survey method	Online survey	
Target population	HKPOP Panel samples, namely Hong Kong People Representative Panel (Probability-based Panel) and Hong Kong People Volunteer Panel (Non-probability-based Panel)	
Weighting method	The figures are rim-weighted according to 1) gender-age distribution of Hong Kong population and by District Councils population figures from Census and Statistics Department; 2) Voting results of District Councils Election from Registration and Electoral Office; 3) rating distribution of Chief Executive from regular tracking surveys.	
Date of survey	29 November, 3pm – 20 December, 3pm	
Total sample size	Probability-based Panel: 1,268	Non-probability-based Panel: 10,066
Response rate	Probability-based Panel: 14.1%	Non-probability-based Panel: 12.6%
Sampling error <sup>[1]</sup>	Sampling error of percentages at +/-3% at 95% confidence level	Sampling error of percentages at +/-1% at 95% confidence level

[1] All error figures in this release are calculated at 95% confidence level. “95% confidence level” means that if we were to repeat a certain survey 100 times with different random samples, we would expect 95 times having the population parameter within the respective error margins calculated. Because of sampling errors, when quoting percentages, journalists should refrain from reporting decimal places, whereas one decimal place can be used when quoting rating figures.

## PopPanel Composition

Regarding data collection, survey data from both the Hong Kong People Representative Panel and Hong Kong People Volunteer Panel were collected in the form of online questionnaire.

Among them, the Hong Kong People Representative Panel comes from members of the “HKPOP Panel” recruited in regular random telephone surveys. HKPOP uses “HKPOP Panel” as a framework for conducting surveys for different research projects, any eligible family member in the household may be invited to participate in a specific research.

Meanwhile, members of the Hong Kong People Volunteer Panel are recruited online. Citizens only need to self-register in HKPORI website to participate in online questionnaires.

All panel data collected will be adjusted using rim-weighting, to minimize the effects of self-selection bias or participation bias. Details are documented in the Weighting Procedure section.

## Response Rate

HKPOP adopts a set of contact definition in compliance with most international standards. Historically, the social research community in Hong Kong has developed its own set of contact rates, cooperation rates, response rates, and so on. HKPOP normally reports the “success rate” for online surveys.

The calculation of the success rates in this study refers to the following tables.

**Table 2: Calculation of success rate of the Hong Kong People Representative Panel (by HKPOP definition)**

Success rate	
=	$\frac{\text{Successful cases}}{\text{Panel size of the Hong Kong People Representative Panel}} \times 100.0\%$
=	$\frac{1,268}{9,002} \times 100.0\%$
=	14.1%

**Table 3: Calculation of success rate of the Hong Kong People Volunteer Panel (by HKPOP definition)**

Success rate	
=	$\frac{\text{Successful cases}}{\text{Panel size of the Hong Kong People Volunteer Panel}} \times 100.0\%$
=	$\frac{10,066}{80,068} \times 100.0\%$
=	12.6%

## Weighting Procedure

HKPOP has continuously adopted and enhanced its weighting method over the past few decades. For this survey, HKPOP adopts a “2 by 5 by 18 by 3 by 13” weighting procedure involving five variables, namely, gender, age, district (18 cells), voting record (3 cells) and rating of Chief Executive (13 cells). Basically, the raw data of practically all random telephone surveys conducted by HKPOP are rim-weighted by the figures obtained from the Hong Kong Census and Statistics Department and/or Registration and Electoral Office so that the marginal distribution of the sample in terms of gender and age would match with that of the general population figures from the Hong Kong Census and Statistics Department. The marginal distribution of the sample in terms of district and voting record would match that of the general population figures from the Hong Kong Census and Statistics Department and/or Registration and Electoral Office. The marginal distribution of the sample in terms of “rating of Chief Executive” would match that of the general population in HKPOP’s regular tracking surveys. This rim-weighting method (sometimes called raking) is found to be the most practicable method in processing HKPOP’s survey data.

Specifically, the gender and age groupings used for weighting are as follows:

- Male 12-29
- Male 30-39
- Male 40-49
- Male 50-59
- Male 60 or above
- Female 12-29
- Female 30-39
- Female 40-49
- Female 50-59
- Female 60 or above

The districts used for weighting are as follows:

- Central and Western
- Wan Chai
- Eastern
- Southern
- Yau Tsim Mong
- Sham Shui Po
- Kowloon City
- Wong Tai Sin
- Kwun Tong
- Tsuen Wan
- Tuen Mun
- Yuen Long
- North
- Tai Po
- Sai Kung
- Sha Tin
- Kwai Tsing
- Islands

The voting records used for weighting are as follows:

- Candidates of pro-democracy camp
- Candidates of non-pro-democracy camp
- Did not vote / blank / void vote

The “rating of Chief Executive” groupings used for weighting are as follows:

- 0 mark
- 1-9 mark(s)
- 10-19 marks
- 20-29 marks
- 30-39 marks
- 40-49 marks
- 50 marks
- 51-60 marks
- 61-70 marks
- 71-80 marks
- 81-90 marks
- 91-99 marks
- 100 marks

## Quantitative Analysis Results

Quantitative analysis results of the “Community Health survey”, after applying the standard weighting procedures, are as follows:

**Table 4: Q1 Survey results, by panel type; Survey period: 29/11-20/12/2021**

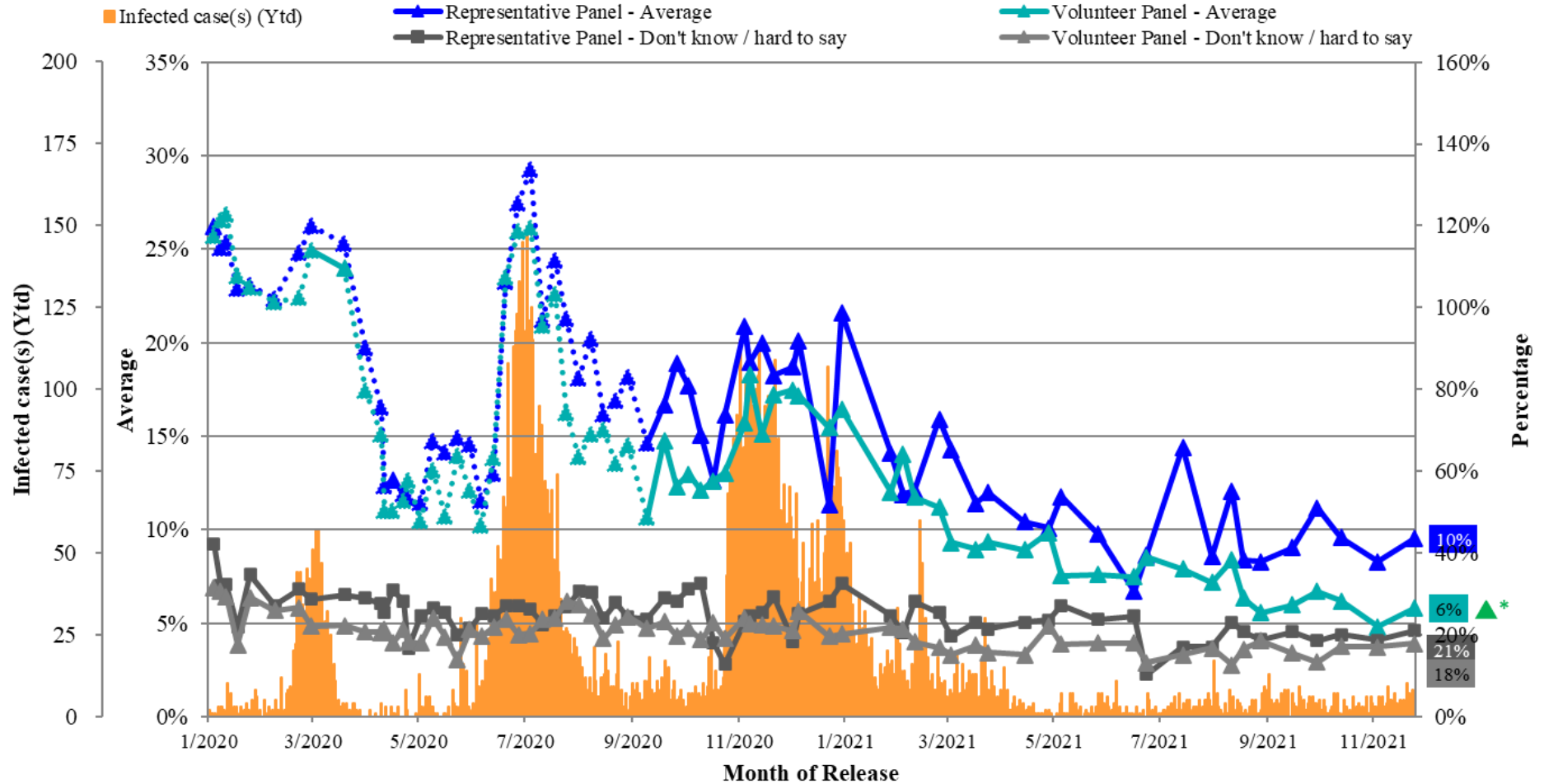
Opinion Question <sup>[2]</sup>	Hong Kong People Representative Panel (Base=1,265)			Hong Kong People Volunteer Panel (Base=10,050)		
	Don't know / hard to say	Try to predict	Average	Don't know / hard to say	Try to predict	Average
Q1 What do you think is your chance of being infected with <b>novel coronavirus pneumonia</b> , also known as Wuhan pneumonia, in the coming one month? <b>[Logarithmic Scale]</b>	21%	<b>79%</b>	<b>10%</b>	18%	<b>82%</b>	<b>6%</b> <sup>[3]</sup>

[2] Answer options included: 0-10 rating scale, others and don't know / hard to say. Answer options changed from linear scale to logarithmic scale since Oct 2020. Questions asked remain unchanged while options of lower probability are further broken down and increase gradually in logarithmic scale.

[3] The difference between the figure and the result from the previous survey has gone beyond the sampling error at 95% confidence level, meaning that the change is statistically significant prima facie. However, whether the difference is statistically significant is not the same as whether they are practically useful or meaningful, and different weighting methods could have been applied in different surveys.

**Chart 1: Q1 Combined Chart, by panel type**

**Assessment of the public's expected chance of COVID-19 infection**



**Table 5: Q2 Survey results, by panel type; Survey period: 29/11-20/12/2021**

Opinion Question <sup>[4]</sup>	Hong Kong People Representative Panel (Base=1,266)				Hong Kong People Volunteer Panel (Base=10,057)			
	Satisfied	Half-half	Dissatisfied	Mean <sup>[5]</sup>	Satisfied	Half-half	Dissatisfied	Mean <sup>[5]</sup>
Q2 How satisfied or dissatisfied are you with the <b>government's performance in handling novel coronavirus pneumonia?</b>	32%	21%	45%	2.6	30% <sup>[6]</sup>	11% <sup>[6]</sup>	<b>58%<sup>[6]</sup></b>	2.4 <sup>[6]</sup>

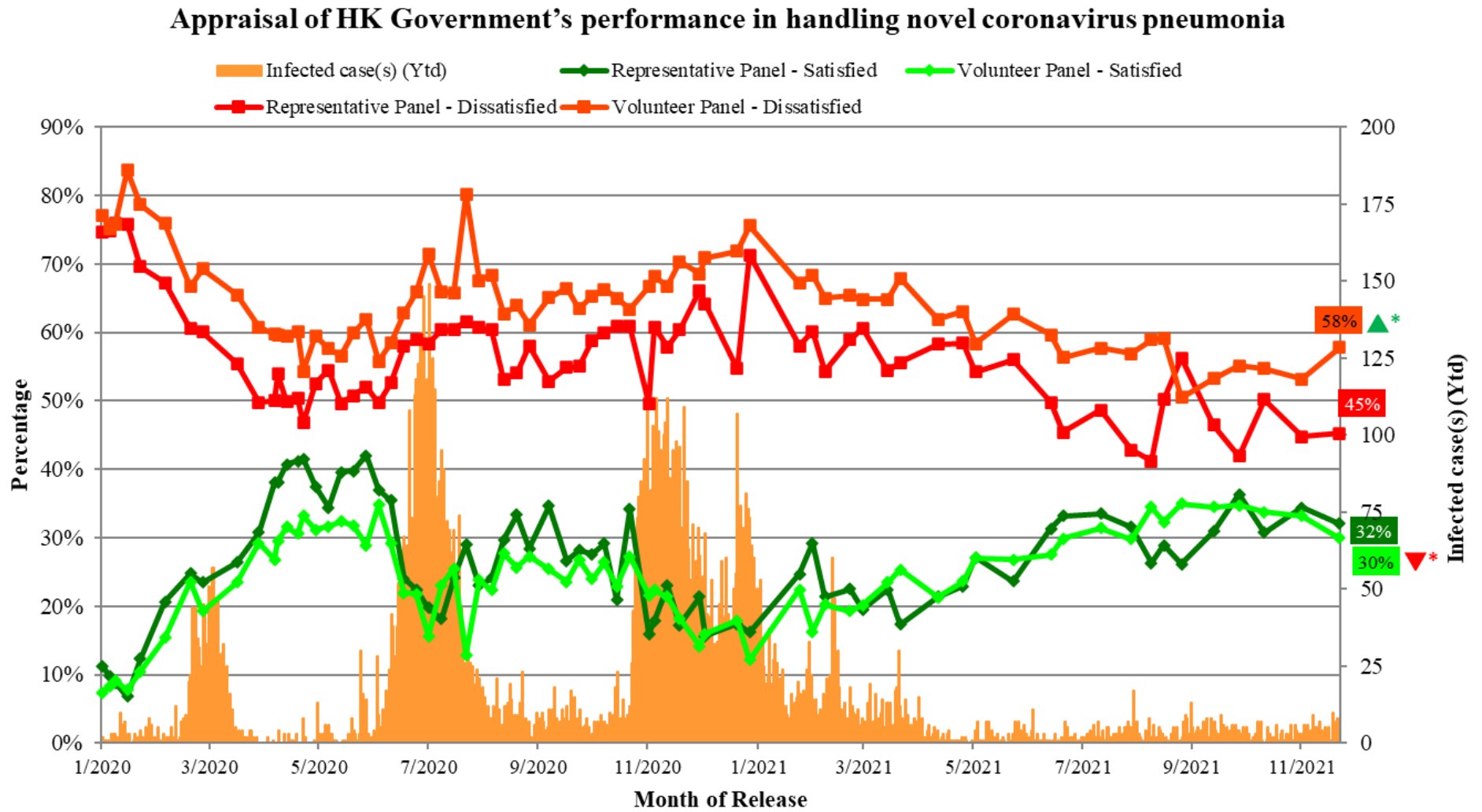
[4] Answer options included: very much satisfied, somewhat satisfied, half-half, somewhat dissatisfied, very much dissatisfied and don't know / hard to say.

[5] The mean value is calculated by quantifying all individual responses into 1, 2, 3, 4, 5 marks according to their degree of positive level, where 1 is the lowest and 5 the highest, and then calculate the sample mean.

[6] The difference between the figure and the result from the previous survey has gone beyond the sampling error at 95% confidence level, meaning that the change is statistically significant prima facie. However, whether the difference is statistically significant is not the same as whether they are practically useful or meaningful, and different weighting methods could have been applied in different surveys.



**Chart 2: Q2 Combined Chart, by panel type**



# Appendices

**Appendix 1: Demographic profile of respondents**

Gender:	Hong Kong People Representative Panel				Hong Kong People Volunteer Panel			
	Raw sample		Weighted sample		Raw sample		Weighted sample	
	Freq	%	Freq	%	Freq	%	Freq	%
Male	794	62.6%	599	47.3%	5,375	53.5%	4,747	47.5%
Female	473	37.3%	668	52.7%	4,640	46.2%	5,233	52.3%
Other	1	0.1%	1	0.1%	24	0.2%	19	0.2%
Total	1,268	100.0%	1,268	100.0%	10,039	100.0%	9,999	100.0%
Missing case(s)	0		0		27		58	

Age:	Hong Kong People Representative Panel				Hong Kong People Volunteer Panel			
	Raw sample		Weighted sample		Raw sample		Weighted sample	
	Freq	%	Freq	%	Freq	%	Freq	%
12 - 29	142	11.2%	251	19.8%	1,525	15.3%	1,971	19.8%
30 - 39	252	19.9%	196	15.5%	2,563	25.7%	1,537	15.5%
40 - 49	262	20.7%	207	16.4%	2,518	25.3%	1,624	16.3%
50 - 59	310	24.4%	230	18.1%	2,179	21.9%	1,804	18.2%
60 or above	302	23.8%	384	30.3%	1,170	11.8%	3,000	30.2%
Total	1,268	100.0%	1,268	100.0%	9,955	100.0%	9,936	100.0%
Missing case(s)	0		0		111		120	

Education attainment:	Hong Kong People Representative Panel				Hong Kong People Volunteer Panel			
	Raw sample		Weighted sample		Raw sample		Weighted sample	
	Freq	%	Freq	%	Freq	%	Freq	%
Primary or below	7	0.6%	21	1.7%	19	0.2%	40	0.4%
Secondary	304	24.4%	303	24.7%	1,428	15.1%	1,510	16.1%
Tertiary or above	937	75.1%	903	73.6%	8,022	84.7%	7,822	83.5%
Total	1,248	100.0%	1,228	100.0%	9,469	100.0%	9,372	100.0%
Missing case(s)	20		40		597		684	

Occupation:	Hong Kong People Representative Panel				Hong Kong People Volunteer Panel			
	Raw sample		Weighted sample		Raw sample		Weighted sample	
	Freq	%	Freq	%	Freq	%	Freq	%
Administrators and professionals	429	34.4%	365	29.2%	3,907	41.3%	2,773	29.8%
Clerks and service workers	308	24.7%	304	24.3%	2,574	27.2%	2,008	21.5%
Workers	46	3.7%	27	2.2%	228	2.4%	128	1.4%
Students	32	2.6%	80	6.4%	351	3.7%	944	10.1%
Home-makers / housewives	61	4.9%	73	5.8%	405	4.3%	442	4.7%
Others	372	29.8%	401	32.1%	1,986	21.0%	3,024	32.5%
Total	1,248	100.0%	1,252	100.0%	9,451	100.0%	9,319	100.0%
Missing case(s)	20		16		615		737	

District:	Hong Kong People Representative Panel				Hong Kong People Volunteer Panel			
	Raw sample		Weighted sample		Raw sample		Weighted sample	
	Freq	%	Freq	%	Freq	%	Freq	%
Central & Western	33	2.9%	37	3.3%	390	3.9%	324	3.3%
Wan Chai	26	2.3%	28	2.5%	238	2.4%	243	2.4%
Eastern	115	10.1%	84	7.4%	897	9.1%	728	7.3%
Southern	47	4.1%	41	3.6%	366	3.7%	352	3.5%
Yau Tsim Mong	43	3.8%	50	4.4%	390	3.9%	437	4.4%
Sham Shui Po	51	4.5%	63	5.5%	500	5.1%	547	5.5%
Kowloon City	71	6.2%	64	5.7%	531	5.4%	558	5.6%
Wong Tai Sin	52	4.6%	65	5.7%	539	5.4%	560	5.6%
Kwun Tong	91	8.0%	105	9.2%	708	7.2%	931	9.4%
Tsuen Wan	48	4.2%	48	4.2%	502	5.1%	415	4.2%
Tuen Mun	82	7.2%	76	6.7%	612	6.2%	659	6.6%
Yuen Long	84	7.4%	98	8.6%	702	7.1%	906	9.1%
North	36	3.2%	48	4.2%	339	3.4%	413	4.2%
Tai Po	56	4.9%	47	4.1%	481	4.9%	408	4.1%
Sai Kung	71	6.2%	73	6.4%	813	8.2%	629	6.3%
Sha Tin	135	11.9%	106	9.3%	1,119	11.3%	916	9.2%
Kwai Tsing	72	6.3%	77	6.8%	570	5.8%	670	6.7%
Islands	24	2.1%	28	2.5%	201	2.0%	243	2.4%
Total	1,137	100.0%	1,137	100.0%	9,898	100.0%	9,942	100.0%
Missing case(s)	131		131		168		115	

Political inclination:	Hong Kong People Representative Panel				Hong Kong People Volunteer Panel			
	Raw sample		Weighted sample		Raw sample		Weighted sample	
	Freq	%	Freq	%	Freq	%	Freq	%
Pro-democracy camp	597	47.2%	291	23.1%	4,754	50.2%	2,779	29.6%
Pro-establishment camp	44	3.5%	180	14.3%	36	0.4%	776	8.3%
Localist	293	23.2%	125	9.9%	3,624	38.3%	1,639	17.5%
Centrist	110	8.7%	212	16.8%	259	2.7%	1,534	16.4%
Others	14	1.1%	7	0.6%	109	1.2%	202	2.2%
No political inclination / politically neutral / don't belong to any camp	181	14.3%	402	32.0%	520	5.5%	2,204	23.5%
Don't know / hard to say	25	2.0%	40	3.2%	168	1.8%	243	2.6%
Total	1,264	100.0%	1,258	100.0%	9,470	100.0%	9,376	100.0%
Missing case(s)	4		10		596		680	

## Voted political camp at 2019

## District Council Election: \*

	Hong Kong People Representative Panel				Hong Kong People Volunteer Panel			
	Raw sample		Weighted sample		Raw sample		Weighted sample	
	Freq	%	Freq	%	Freq	%	Freq	%
Democratic	1,019	80.4%	363	28.6%	9,357	93.2%	2,624	26.3%
Non-democratic	113	8.9%	479	37.8%	154	1.5%	3,277	32.8%
Did not vote / blank vote / void vote / don't know / hard to say / refuse to answer	116	9.1%	368	29.1%	383	3.8%	3,003	30.1%
Not a registered voter	20	1.6%	58	4.6%	146	1.5%	1,074	10.8%
Total	1,268	100.0%	1,268	100.0%	10,040	100.0%	9,978	100.0%

\* (Only for respondents aged 18 or above or refuse to answer age)

**Appendix 2: Contact Information**

	Hong Kong People Representative Panel	Hong Kong People Volunteer Panel
Total valid samples	1,268	10,066
Survey period	29/11-20/12/2021	29/11-20/12/2021
Success rate	14.1%	12.6%
Questionnaires sent out	9,002	80,068
Questionnaires received	3,314	25,625
Ineligible samples	37	325
Invalid samples	1,785	13,353
Incomplete samples	224	1,881
Standard error	1.4%	0.5%
Sampling error	2.8%	1.0%

**Appendix 3: Quantitative analyses**

Q1 What do you think is your chance of being infected with the Coronavirus disease, also known as Wuhan pneumonia, in the coming one month? [Logarithmic Scale]	Hong Kong People Representative Panel		Hong Kong People Volunteer Panel	
	Frequencies	Percentages (Base=1,265)	Frequencies	Percentages (Base=10,050)
0% chance (Certainly not)	142	11.2%	1,278	12.7%
0.001% chance (1 in 100,000)	265	20.9%	1,877	18.7%
0.01% chance (1 in 10,000)	89	7.0%	992	9.9%
0.1% chance (1 in 1,000)	59	4.7%	765	7.6%
1% chance (1 in 100)	126	10.0%	1,059	10.6%
5% chance (1 in 20)	55	4.3%	577	5.8%
10% chance (1 in 10) }Small chance	63 }903	5.0% }71.3%	543 }7,885	5.4% }78.6%
15% chance	9	0.7%	162	1.6%
20% chance	31	2.5%	225	2.2%
25% chance	3	0.2%	101	1.0%
30% chance	35	2.8%	253	2.5%
35% chance	1	<0.1%	3	<0.1%
40% chance	19	1.5%	43	0.4%
45% chance	6	0.4%	8	0.1%
50% chance	61	4.8%	249	2.5%
60% chance	20	1.6%	62	0.6%
70% chance	6	0.5%	17	0.2%
80% chance }Large chance	2 }35	0.1% }2.8%	4 }97	<0.1% }1.0%
90% chance	2	0.1%	1	<0.1%
100% chance (Certainly will)	6	0.5%	12	0.1%
Others	2	0.2%	2	<0.1%
Don't know / hard to say	266	21.0%	1,795	17.9%
Total	1,267	100.0%	10,029	100.0%
Mean		0.95		0.58
Standard error of mean		0.06		0.01
Median		0.01		0.00
Refuse to answer		1		28



Q2 How satisfied or dissatisfied are you with the government's performance in handling novel coronavirus pneumonia?	Hong Kong People Representative Panel		Hong Kong People Volunteer Panel	
	Frequencies	Percentages (Base=1,266)	Frequencies	Percentages (Base=10,057)
Very much satisfied } Satisfied	90	7.2%	917	9.1%
Somewhat satisfied	314	24.9%	2,095	20.8%
Half-half	270	21.4%	1,140	11.3%
Somewhat dissatisfied	133	10.5%	1,476	14.7%
Very much dissatisfied } Dissatisfied	439	34.7%	4,331	43.1%
Don't know / hard to say	17	1.3%	97	1.0%
Total	1,263	100.0%	10,056	100.0%
Mean values		2.6		2.4
Standard error of mean		<0.1		<0.1
Median		3.0		2.0
<i>Refuse to answer</i>		5		0
<b>Net value (Satisfied- Dissatisfied)</b>		<b>-13.2%</b>		<b>-27.8%</b>

**Appendix 4: Sample count for each constituency (18 in total)**

<b>Rank</b>	<b>District Council</b>	<b>Hong Kong People Representative Panel</b>	<b>Hong Kong People Volunteer Panel</b>	<b>Total</b>
1	Sha Tin	135	1119	1254
2	Eastern	115	897	1012
3	Sai Kung	71	813	884
4	Kwun Tong	91	708	799
5	Yuen Long	84	702	786
6	Tuen Mun	82	612	694
7	Kwai Tsing	72	570	642
8	Kowloon City	71	531	602
9	Wong Tai Sin	52	539	591
10	Sham Shui Po	51	500	551
11	Tsuen Wan	48	502	550
12	Tai Po	56	481	537
12	Yau Tsim Mong	43	390	433
14	Central & Western	33	390	423
15	Southern	47	366	413
16	North	36	339	375
17	Wan Chai	26	238	264
18	Islands	24	201	225
	<b>Total</b>	<b>1,137</b>	<b>9,898</b>	<b>11,035</b>

## Appendix 5: Survey questionnaire (29/11-20/12/2021)

### HKPORI: We Hongkongers & Community Health Survey

Hong Kong Public Opinion Research Institute is politically neutral, we welcome different opinions. All personal data will be kept strictly confidential. You can fill in the questionnaire again at any time to express your latest views, and your last submission will be collated. For enquiries, please email us at panel@pori.hk.

Last updated: xxxx-xx-xx xx:xx

Tentative next update: xxxx-xx-xx

**\*Required**

**(Registered member) Panel ID: \***

(Please do not alter the pre-filled ID)

\_\_\_\_\_

**(Registered member) Invitation token: \***

(Please do not alter the pre-filled token)

\_\_\_\_\_

**(New member) Please first register as a HKPOP Panel member at**

**<https://www.pori.hk/panel.html?lang=en> \***

- Already registered as a member earlier (Please go to the survey platform by clicking on the designated hyperlink sent to you by email)
- Have just registered as a member
- Not yet registered as a member, and will register after completing the survey (Please note: Your response will be removed if you have not yet successfully registered as a member at the time of data analysis)

#### **Eligibility Confirmation**

**(New member)**

**Email used / will be used in registration: \***

\_\_\_\_\_

**Are you a Hong Kong resident aged 12 or above? \***

- Yes
- No
- Don't know / hard to say

### Community Health

**How likely do you think it is that you will contract novel coronavirus pneumonia over the next one month?**

(Please select the closest answer. If you have another answer, please fill in the last item.)

- 0% chance (Certainly not)
- 0.001% chance (1 in 100,000)
- 0.01% chance (1 in 10,000)
- 0.1% chance (1 in 1,000)
- 1% chance (1 in 100)
- 5% chance (1 in 20)
- 10% chance (1 in 10)
- 15% chance
- 20% chance
- 25% chance
- 30% chance
- 35% chance
- 40% chance
- 45% chance
- 50% chance
- 60% chance
- 70% chance
- 80% chance
- 90% chance
- 100% chance (Certainly will)
- Don't know / hard to say
- Other: \_\_\_\_\_

**Community Health**

**What do you think is the appropriate timing to completely lift the regulation prohibiting gatherings of more than a specific number of people in public places under the pandemic?**

(Please select the closest answer; If there is no suitable answer at all, please select “don’t know / hard to say”.)

- Should completely lift the regulation prohibiting gatherings of more than a specific number of people in public places unconditionally → [Skip questions related to this regulation](#)
- Number of recovered cases exceeds newly confirmed cases each day
- Number of newly confirmed cases each day falls to a single digit
- No more newly confirmed local case
- No more newly confirmed local or imported case
- No more newly confirmed local case in L consecutive days (Please input L in the next page)
- No more newly confirmed local and imported case in N consecutive days (Please input N in the next page)
- Don’t know / hard to say

**Community Health**

**How many consecutive days (the value of L mentioned before) with no more newly confirmed local case do you think there should be before it is appropriate to completely lift the regulation prohibiting gatherings of more than a specific number of people in public places?**

\_\_\_\_\_

**Community Health**

**How many consecutive days (the value of N mentioned before) with no more newly confirmed local and imported case do you think there should be before it is appropriate to completely lift the regulation prohibiting gatherings of more than a specific number of people in public places?**

\_\_\_\_\_

**Community Health**

**How many newly confirmed cases each day should there be before it would be appropriate to prohibit gatherings of more than 2 people? [The pandemic should be at its worst; For reference, there are 12 newly confirmed cases on February 23, 2021]**

(To opt for “don’t know / hard to say”, please input 99999)

\_\_\_\_\_

**How many newly confirmed cases each day should there be before it would be appropriate to prohibit gatherings of more than 4 people? [The number of newly confirmed cases should be fewer than that in the previous question]**

(To opt for “don’t know / hard to say”, please input 99999)

---

**How many newly confirmed cases each day should there be before it would be appropriate to prohibit gatherings of more than 8 people? [The number of newly confirmed cases should be fewer than that in the previous question]**

(To opt for “don’t know / hard to say”, please input 99999)

---

**How many newly confirmed cases each day should there be before it would be appropriate to prohibit gatherings of more than 16 people? [The number of newly confirmed cases should be fewer than that in the previous question]**

(To opt for “don’t know / hard to say”, please input 99999)

---

**Please list combinations of [number of cases & number of people allowed in gatherings] that you think is appropriate in the field below:**

---

### **Other Opinions**

**How satisfied or dissatisfied are you with the government’s performance in handling novel coronavirus pneumonia?**

- Very much satisfied
- Somewhat satisfied
- Half-half
- Somewhat dissatisfied
- Very much dissatisfied
- Don’t know / hard to say

**Please rate on a scale of 0 to 100 your extent of support to the Chief Executive Carrie Lam, with 0 indicating absolutely not supportive, 100 indicating absolutely supportive and 50 indicating half-half. How would you rate the Chief Executive Carrie Lam?[For weighting purposes only]**

(To opt for “don’t know / hard to say”, please input 8888)

---

**Generally speaking, how satisfied or dissatisfied are you with the current political condition in Hong Kong?**

- Very much satisfied
- Somewhat satisfied
- Half-half
- Somewhat dissatisfied
- Very much dissatisfied
- Don't know / hard to say

**Generally speaking, how satisfied or dissatisfied are you with the current economic condition in Hong Kong?**

- Very much satisfied
- Somewhat satisfied
- Half-half
- Somewhat dissatisfied
- Very much dissatisfied
- Don't know / hard to say

**Generally speaking, how satisfied or dissatisfied are you with the current livelihood condition in Hong Kong?**

- Very much satisfied
- Somewhat satisfied
- Half-half
- Somewhat dissatisfied
- Very much dissatisfied
- Don't know / hard to say

**Other Opinions**

**Do you have any survey question to suggest for our surveys?**

(If you do not have any suggestion, please leave this space blank.)

---

**Do you have any needs which you want us to forward to your District Councillor or other persons you name here? (Please write down your contacts)**

(The request you make here is not part of our study, we simply want to bridge people who need help with people who can help.)

---

**Personal Information (Registered member)**

The following section is about personal information, including: gender, age, educational attainment, occupation, political inclination, area of residence, voting behaviour in the 2019 District Council Election. If you have already provided relevant information in the previous PopPanel survey series and have nothing to add or update, you may skip these questions. We will use the past data you provided in this survey series for analysis.

- I have already provided my personal information, and has nothing to add or update (skip questions on personal information)
- Provide / update personal information now

**Personal Information****Gender**

- Male
- Female
- Other

**Age**  

---

**Age range**

(If prefer not to provide exact age)

- 12 - 14
- 15 - 17
- 18 - 19
- 20 - 24
- 25 - 29
- 30 - 34
- 35 - 39
- 40 - 44
- 45 - 49
- 50 - 54
- 55 - 59
- 60 - 64
- 65 - 69
- 70 or above



**Educational attainment**

(The highest level attended, regardless of whether you have completed the course, including what you are attending)

- Primary or below
- Lower secondary (Secondary 1 to 3)
- Upper secondary (Secondary 4 to 7 / DSE / Yi Jin)
- Tertiary: non-degree course (including diploma / certificate / sub-degree course)
- Tertiary: bachelor degree course
- Tertiary: postgraduate school or above

**Occupation**

(Owner / self-employed / freelance / part time / civil servant are not valid answers, please answer according to the job nature or content)

- Administrator and professional
- Clerical and service worker
- Production worker
- Student
- Home-maker / housewife
- Retired person
- Unemployed / between jobs / other non-employed
- Other: \_\_\_\_\_

**Which of the following best describes your political inclination?**

- Localist
- Pro-democracy camp
- Centrist
- Pro-establishment camp
- No political inclination / politically neutral / do not belong to any camp
- Don't know / hard to say
- Other: \_\_\_\_\_

**Area of residence**

- Central & Western District
- Wan Chai
- Eastern District
- Southern District
- Yau Tsim Mong
- Sham Shui Po
- Kowloon City
- Wong Tai Sin
- Kwun Tong
- Tsuen Wan
- Tuen Mun
- Yuen Long
- North District
- Tai Po
- Sai Kung
- Sha Tin
- Kwai Tsing
- Islands

**Which candidate did you vote for in the 2019 District Council Election?**

- Candidate of pro-democracy camp, including localist
- Candidate of non-pro-democracy camp, including pro-establishment camp and centrist
- Don't know / hard to say
- Blank / void vote
- Did not vote (was a registered voter of the election)
- Did not vote (was not a registered voter of the election)

**End of Questionnaire**

Thank you for completing the survey. For enquiries, please email us at [panel@pori.hk](mailto:panel@pori.hk) or call us at 3844 3111 during office hours.