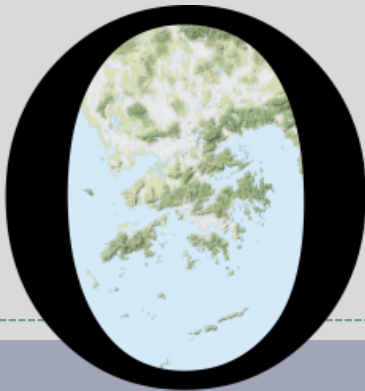


# POP



---

HONG KONG PUBLIC OPINION PROGRAM

HONG KONG PUBLIC OPINION RESEARCH INSTITUTE

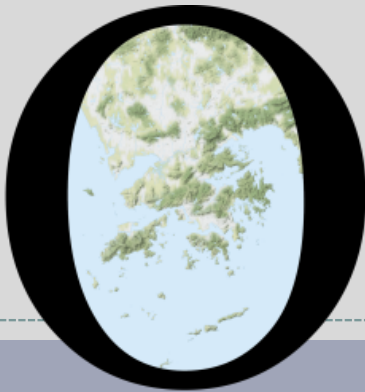
香港民意研究所 之 香港民意研究計劃

---

**Latest Tracking Poll Results**

**October 26, 2021**

# POP



---

HONG KONG PUBLIC OPINION PROGRAM

HONG KONG PUBLIC OPINION RESEARCH INSTITUTE

香港民意研究所 之 香港民意研究計劃

---

**Community Democracy Project -**

**Community Health Module**

**Latest Results**

**October 26, 2021**

# Contact Information - Community Health Module

3

	HKPOP Panel	
Date of survey	October 11, 3pm – October 25, 3pm	
Survey method	Online survey	
Target population	Hong Kong residents aged 12+	
	Representative Panel	Volunteer Panel
Total sample size	733	5,814
Response rate	8.5%	7.1%
Sampling error	Sampling error of percentages at +/-4% at 95% confidence level	Sampling error of percentages at +/-1% at 95% confidence level
Weighting method	The figures are rim-weighted according to 1) gender-age distribution of Hong Kong population and by District Councils population figures from Census and Statistics Department; 2) Voting results of District Councils Election from Registration and Electoral Office; 3) rating distribution of Chief Executive from regular tracking surveys.	

# Survey Result - Community Health Module

4

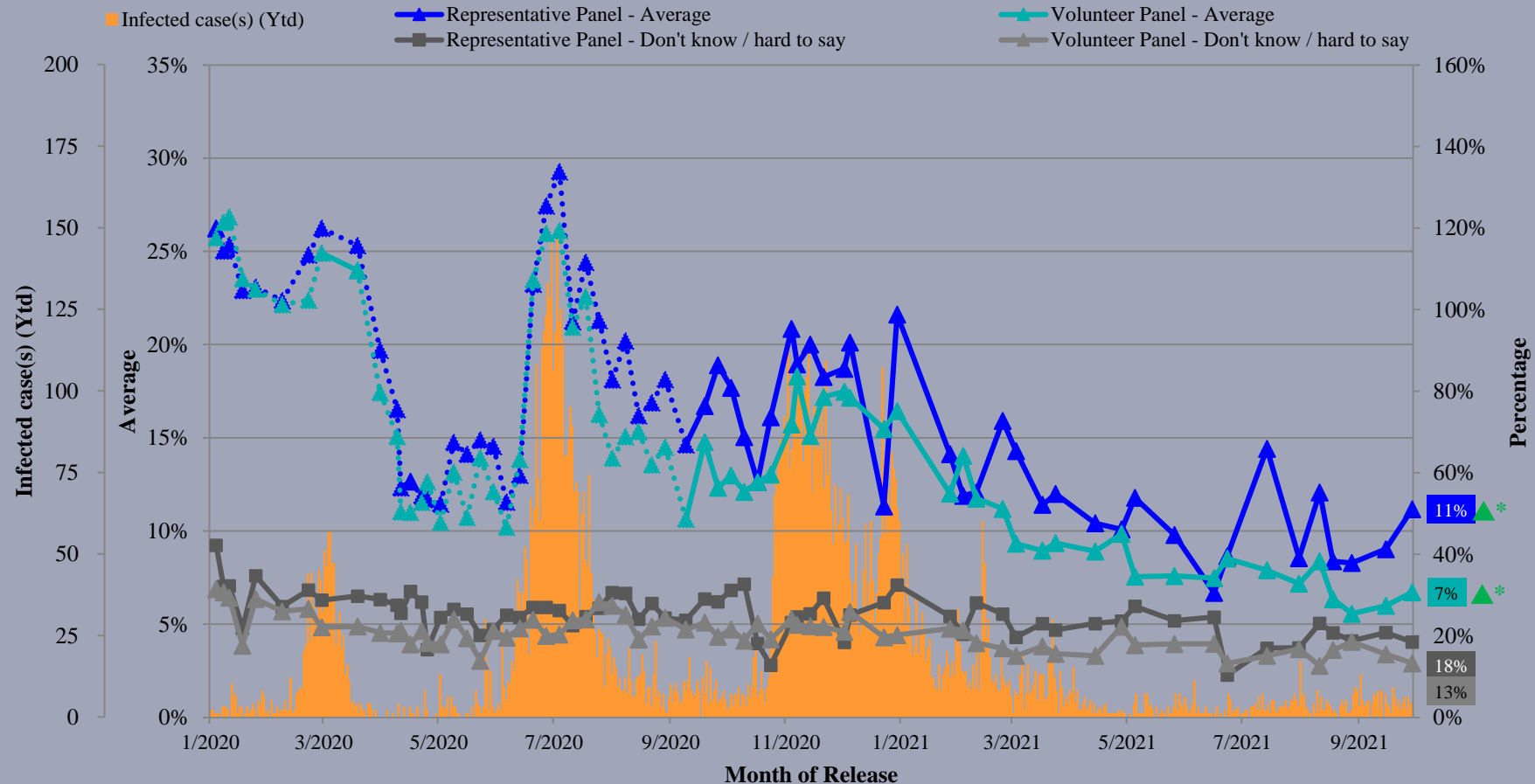
- **Latest survey period: 11-25/10/2021** (*Representative Panel N=732 Volunteer Panel N=5,807*)
- **Last survey period: 23/9-11/10/2021** (*Representative Panel N=839 Volunteer Panel N=7,053*)
- **Second last survey period: 13-23/9/2021** (*Representative Panel N=663 Volunteer Panel N=5,599*)

Opinion Question <sup>^</sup>		Representative Panel (N=732)		Volunteer Panel (N=5,807)	
		Don't know / hard to say	Average	Don't know / hard to say	Average
Q1 How likely do you think it is that you will contract novel coronavirus pneumonia over the next one month? [Logarithmic Scale]	Latest	18%	11% ▲*	13%	7% ▲*
	Last	21%	9%	15%	6%
	Second Last	19%	8%	19%	6%

<sup>^</sup> Answer options included: 0-10 rating scale, others and don't know / hard to say. Answer options changed from linear scale to logarithmic scale since Oct 2020. \* Significant change

# Survey Result - Community Health Module

## Assessment of the public's expected chance of COVID-19 infection



^ Answer options included: 0-10 rating scale, others and don't know / hard to say. Answer options changed from linear scale to logarithmic scale since Oct 2020.

\* Significant change

# Survey Result - Community Health Module

6

- **Latest survey period: 11-25/10/2021** (*Representative Panel N=733 Volunteer Panel N=5,810*)
- **Last survey period: 23/9-11/10/2021** (*Representative Panel N=840 Volunteer Panel N=7,063*)
- **Second last survey period: 13-23/9/2021** (*Representative Panel N=664 Volunteer Panel N=5,602*)

Opinion Question <sup>^</sup>		Representative Panel (N=733)				Volunteer Panel (N=5,810)			
		Satisfied	Half-half	Dissatisfied	Mean <sup>†</sup>	Satisfied	Half-half	Dissatisfied	Mean <sup>†</sup>
Q2 How satisfied or dissatisfied are you with the government's performance in handling novel coronavirus pneumonia?	Latest	36% ▲*	21%	42%	2.7	35%	9% ▼*	55% ▲*	2.5
	Last	31%	21%	46%	2.6	35%	12%	53%	2.5
	Second Last	26%	18%	56%	2.4	35%	14%	50%	2.5

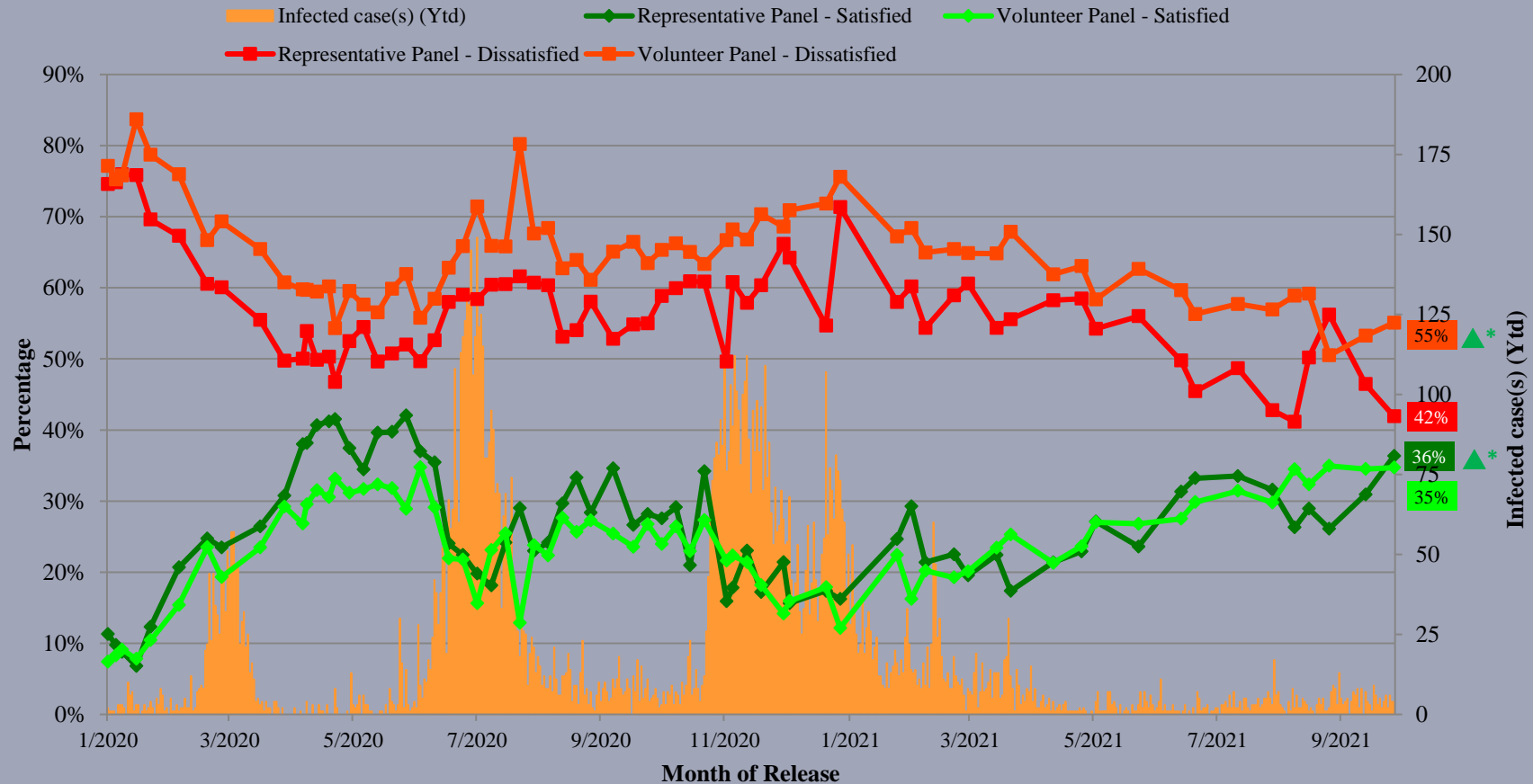
<sup>^</sup> Answer options included: very much satisfied, somewhat satisfied, half-half, somewhat dissatisfied, very much dissatisfied and don't know / hard to say

<sup>†</sup> The mean value is calculated by quantifying all individual responses into 1, 2, 3, 4, 5 marks according to their degree of positive level, where 1 is the lowest and 5 the highest, and then calculate the sample mean.

\* Significant change

# Survey Result - Community Health Module

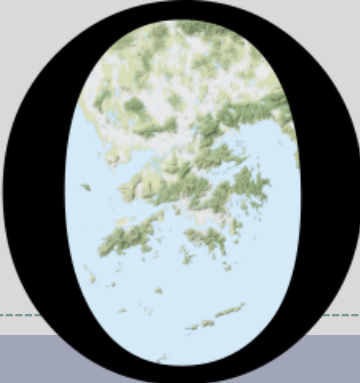
## Appraisal of HK Government's performance in handling novel coronavirus pneumonia



^ Answer options included: very much satisfied, somewhat satisfied, half-half, somewhat dissatisfied, very much dissatisfied and don't know / hard to say

\* Significant change

# POP



---

HONG KONG PUBLIC OPINION PROGRAM

HONG KONG PUBLIC OPINION RESEARCH INSTITUTE

香港民意研究所 之 香港民意研究計劃

---

**限聚指數**

**Group Gathering Prohibition Index**

**26/10/2021**



# 樣本資料 - 限聚指數基準調查

## Contact Information - Group Gathering Prohibition Index Benchmark Survey

9

	香港民研意見群組成員 HKPOP Panel
調查日期 Survey date	18/10 15:00 – 25/10 15:00
調查方法 Survey method	以電郵接觸群組成員，並於網上完成調查 Online survey
訪問對象 Target population	十二歲或以上的香港市民 Hong Kong residents aged 12+
總成功樣本 Total sample size	5,974
回應比率 Response rate	6.6%
抽樣誤差 Sampling error	95% 置信水平，百分比誤差 +/-1% Sampling error of percentages at +/-1% at 95% confidence level
加權方法 Weighting method	按照1) 政府統計處提供的全港人口年齡及性別分佈統計數字、各區議會人口數字； 2) 選舉事務處提供的區議會選舉結果；3) 常規調查中的特首評分分佈數字，以「反覆多重加權法」作出調整。 The figures are rim-weighted according to 1) gender-age distribution of Hong Kong population and by District Councils population figures from Census and Statistics Department; 2) Voting results of District Councils Election from Registration and Electoral Office; 3) rating distribution of Chief Executive from regular tracking surveys.

# 限聚指數

## Group Gathering Prohibition Index

10

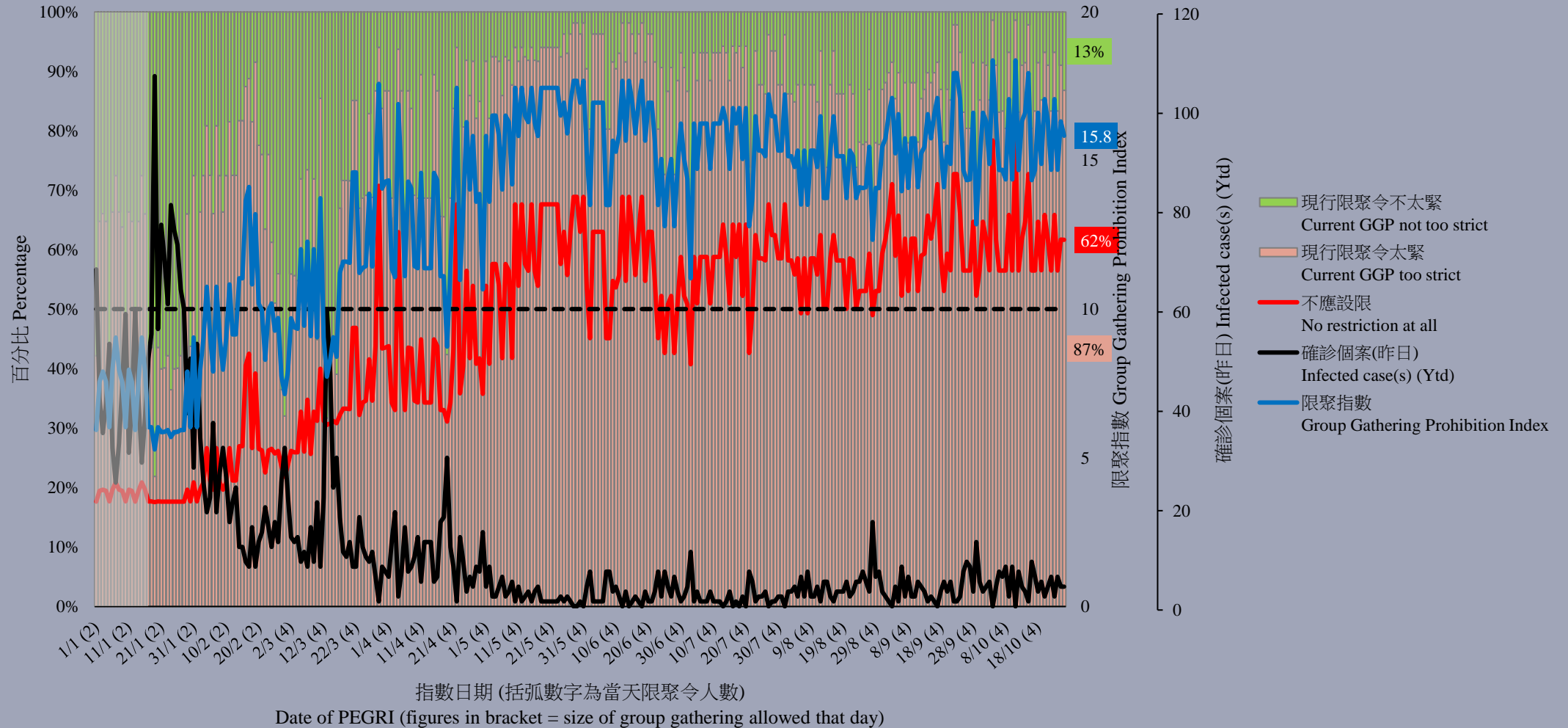
- **最新調查日期 Latest survey date: 18-25/10/2021 (N=5,974)**
- **上次調查日期 Last survey date: 13-20/9/2021 (N=6,210)**
- **上上次調查日期 Second last survey date: 16-23/8/2021 (N=7,456)**

意見題目	Opinion Questions
<p>你認為香港應否無條件全面撤銷「限聚令」？</p> <ul style="list-style-type: none"><li>▪ 應該無條件撤銷「限聚令」</li><li>▪ 不應該，應視乎疫情而定</li><li>▪ 不知道／很難說</li></ul> <p>[追問沒有選擇應該“無條件撤銷「限聚令」”者] 你認為每天新增確診個案數應是多少，才適合將「限聚令」訂於2人？ 你認為每天新增確診個案數應是多少，才適合將「限聚令」訂於4人？ 你認為每天新增確診個案數應是多少，才適合將「限聚令」訂於8人？ 你認為每天新增確診個案數應是多少，才適合將「限聚令」訂於16人？ 你認為感染個案清零多少天後，限聚令應該全面撤銷？</p> <p>請於以下欄位列舉你認為合適的 [個案數 及 限聚人數] 組合……</p>	<p>Do you think the regulation prohibiting gatherings of more than a specific number of people in public places should be completely lifted unconditionally in Hong Kong?</p> <ul style="list-style-type: none"><li>▪ Yes, the ban should be lifted unconditionally</li><li>▪ No, it should depend on the epidemic situation</li><li>▪ Don't know / hard to say</li></ul> <p>[For respondents NOT answering “Yes, the ban should be lifted unconditionally”] How many newly confirmed cases each day should there be before it would be appropriate to prohibit gatherings of more than 2 people? How many newly confirmed cases each day should there be before it would be appropriate to prohibit gatherings of more than 4 people? How many newly confirmed cases each day should there be before it would be appropriate to prohibit gatherings of more than 8 people? How many newly confirmed cases each day should there be before it would be appropriate to prohibit gatherings of more than 16 people? After how many days of zero infection do you think the group gathering ban should be lifted altogether?</p> <p>Please list combinations of [number of cases &amp; number of people allowed in gatherings] that you think is appropriate in the field below:</p>

# 調查結果 - 限聚接受程度

## Survey Result – Group Gathering Prohibition Acceptance Level

限聚接受程度 Group Gathering Prohibition Acceptance Level



## 限聚指數 - 分析評論

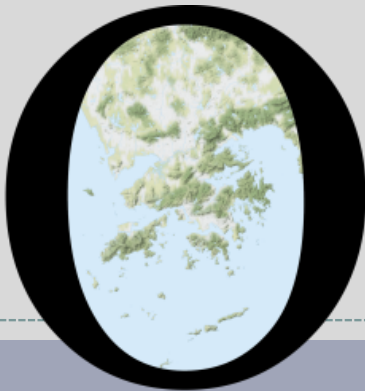
### Group Gathering Prohibition Index – Commentary

12

獨立評論人潘麒智指出：「政府實施『限聚令』已經接近兩年，除疫情開始時曾作出補助外，2021年完全沒有任何補貼，中小企只能繼續苦撐，營業額因疫情至今仍未回復正常。以疫情現況，政府可考慮隨着潛伏期結束，病例沒有增加，嘗試分階段解除食肆、酒吧及健身室等室內限聚令，讓業界可重回軌道。」

**Independent commentator KC Poon observed, “It has been almost two years since the government implemented the ‘Group Gathering Restriction’, except for the subsidies at the beginning of the epidemic, there is no subsidy at all in 2021, so SMEs can only continue to struggle and their business turnover has not yet returned to normal due to the epidemic. Given the current situation of the epidemic, the government should consider lifting the restriction on indoor gathering in restaurants, bars and fitness centres in phases after the incubation period ends and the number of cases does not increase, so that the industry can get back on track.”**

# POP



---

HONG KONG PUBLIC OPINION PROGRAM

HONG KONG PUBLIC OPINION RESEARCH INSTITUTE

香港民意研究所 之 香港民意研究計劃

---

**Latest Tracking Poll Results**

**October 26, 2021**

# Contact Information

14

- Date of survey: 18-22/10/2021
- Survey method: Random telephone survey conducted by real interviewers
- Target population: Cantonese-speaking Hong Kong residents aged 18 or above
- Sample size: 1,000 (including 500 landline and 500 mobile samples)
- Effective response rate: 52.2%
- Sampling error: Sampling error of percentages not more than +/-4%, that of net values not more than +/-8% and that of ratings not more than +/-2.1 at 95% conf. level
- Weighting method: Rim-weighted according to figures provided by the Census and Statistics Department. The gender-age distribution of the Hong Kong population came from “Mid-year population for 2020”, while the educational attainment (highest level attended) distribution and economic activity status distribution came from “Women and Men in Hong Kong - Key Statistics (2020 Edition)”.

# Survey Topic

15

- Popularity of Chief Executive
- Popularity of HKSAR Government
  - People's satisfaction with the HKSAR Government
  - People's trust in the HKSAR Government
  - People's appraisals of society's conditions
- Public Sentiment Index
- Taiwan and Tibetan issues
  - Confidence on Cross-strait Reunification
  - Opinion on Taiwan's Rejoining the United Nations
  - Opinion on Applicability of "One Country, Two Systems" to Taiwan
  - Opinion on Independence of Taiwan
  - Opinion on Independence of Tibet

# Survey Result - Popularity of Chief Executive

## ● Popularity of Chief Executive

		4-7/10/2021 <sup>#</sup>	18-22/10/2021	Change	Record
CE Carrie Lam	Rating	38.3	37.0	▼1.3	Record <b>low</b> since Sept. 2021
	Vote of confidence	24%	22%	▼2%	Record <b>low</b> since Sept. 2021
	Vote of no confidence	59%	64%	▲5% *	Record <b>high</b> since Sept. 2021
	Net approval rate	-35%	-42%	▼7%	Record <b>low</b> since Sept. 2021

- Our latest survey shows that the popularity rating of CE Carrie Lam is 37.0 marks, with 32% of respondents giving her 0 mark. Her approval rate is 22%, disapproval rate 64%, giving a net popularity of negative 42 percentage points. The rating and net popularity have not changed significantly compared to half a month ago.

<sup>#</sup> POP conducted a Policy Address instant survey in between two tracking surveys, but because our tracking surveys do not use online samples, and our latest survey started two days before the Policy Address, it is better to compare the latest figures with those collected in our previous survey.

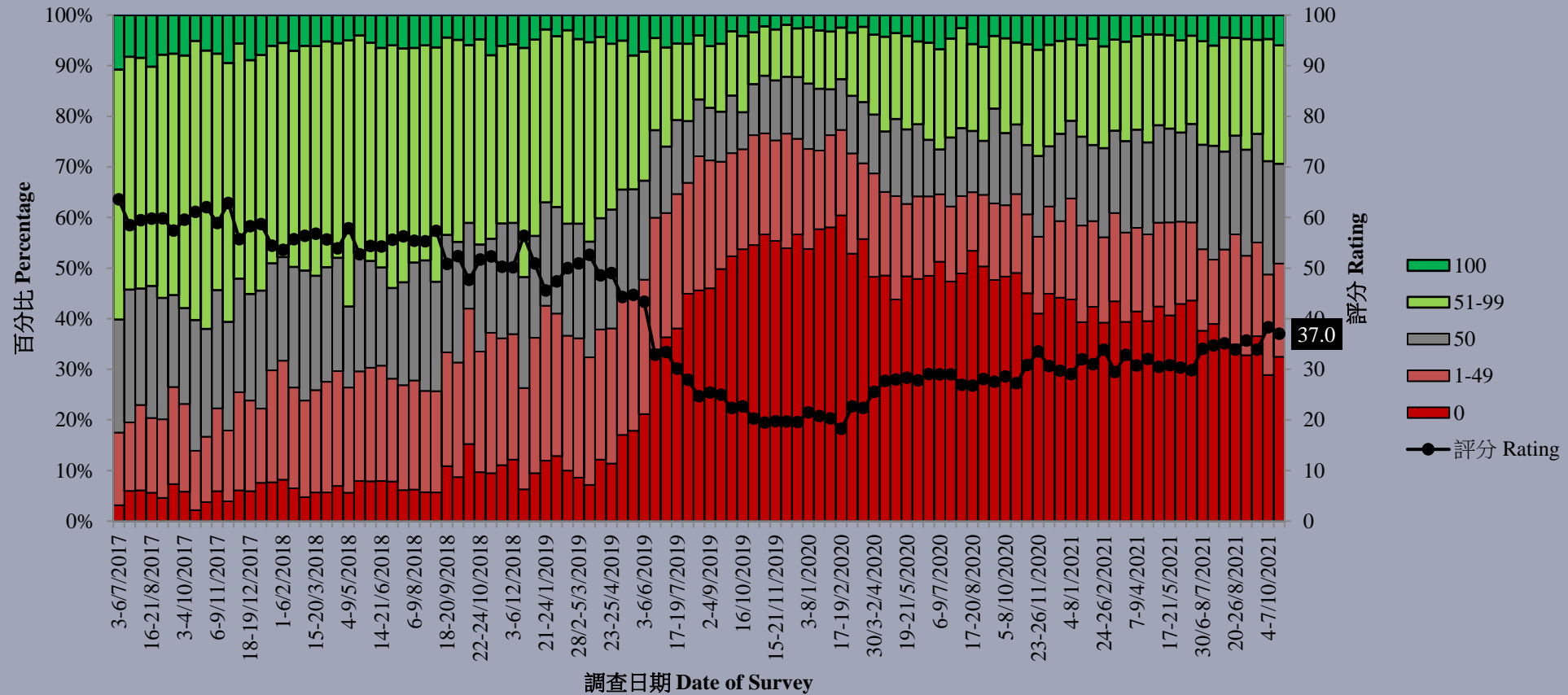
\* Significant change



# Survey Result - Popularity of Chief Executive

17

特首林鄭月娥評分 (按次計算)  
Rating for Chief Executive Carrie Lam (Per Poll)  
(7/2017 – 10/2021)



# Survey Topic

21

- Popularity of Chief Executive
- Popularity of HKSAR Government
  - People's satisfaction with the HKSAR Government
  - People's trust in the HKSAR Government
  - People's appraisals of society's conditions
- Public Sentiment Index
- Taiwan and Tibetan issues
  - Confidence on Cross-strait Reunification
  - Opinion on Taiwan's Rejoining the United Nations
  - Opinion on Applicability of "One Country, Two Systems" to Taiwan
  - Opinion on Independence of Taiwan
  - Opinion on Independence of Tibet

# Survey Result - Popularity of HKSAR Government

22

## ● People's satisfaction with the HKSAR Government

	16-23/9/2021	18-22/10/2021	Change	Record
Satisfaction rate	25%	26%	▲1%	Record <b>high</b> since May 2019
Dissatisfaction rate	54%	55%	--	--
Net satisfaction rate	-30%	-29%	▲1%	Record <b>high</b> since May 2019
Mean value	2.4	2.4	--	--

- Regarding the HKSAR Government, the latest satisfaction rate is 26%, whereas dissatisfaction rate stands at 55%, thus the net satisfaction is negative 29 percentage points, registering another **record high** since May 2019. The mean score is 2.4, meaning between “quite dissatisfied” and “half-half” in general. Figures have not changed much from a month ago.

# Survey Result - Popularity of HKSAR Government

23

## ● People's trust in the HKSAR Government

	16-23/9/2021	18-22/10/2021	Change	Record
Trust	35%	38%	▲3%	Record <b>high</b> since Jan. 2019
Distrust	48%	44%	▼4%	Record <b>low</b> since Jan. 2019
Net trust	-13%	-6%	▲7%	Record <b>high</b> since Jan. 2019
Mean value	2.6	2.7	▲0.1	Record <b>high</b> since Jan. 2019

- Regarding people's trust in the HKSAR Government, 38% of the respondents expressed trust, 44% expressed distrust, thus the net trust value is negative 6 percentage points, registering a **record high** since January 2019. The mean score is 2.7, meaning between “quite distrust” and “half-half” in general. Figures have not changed much from a month ago.

# Survey Result - Popularity of HKSAR Government

24

## • Net satisfaction rates of society's conditions

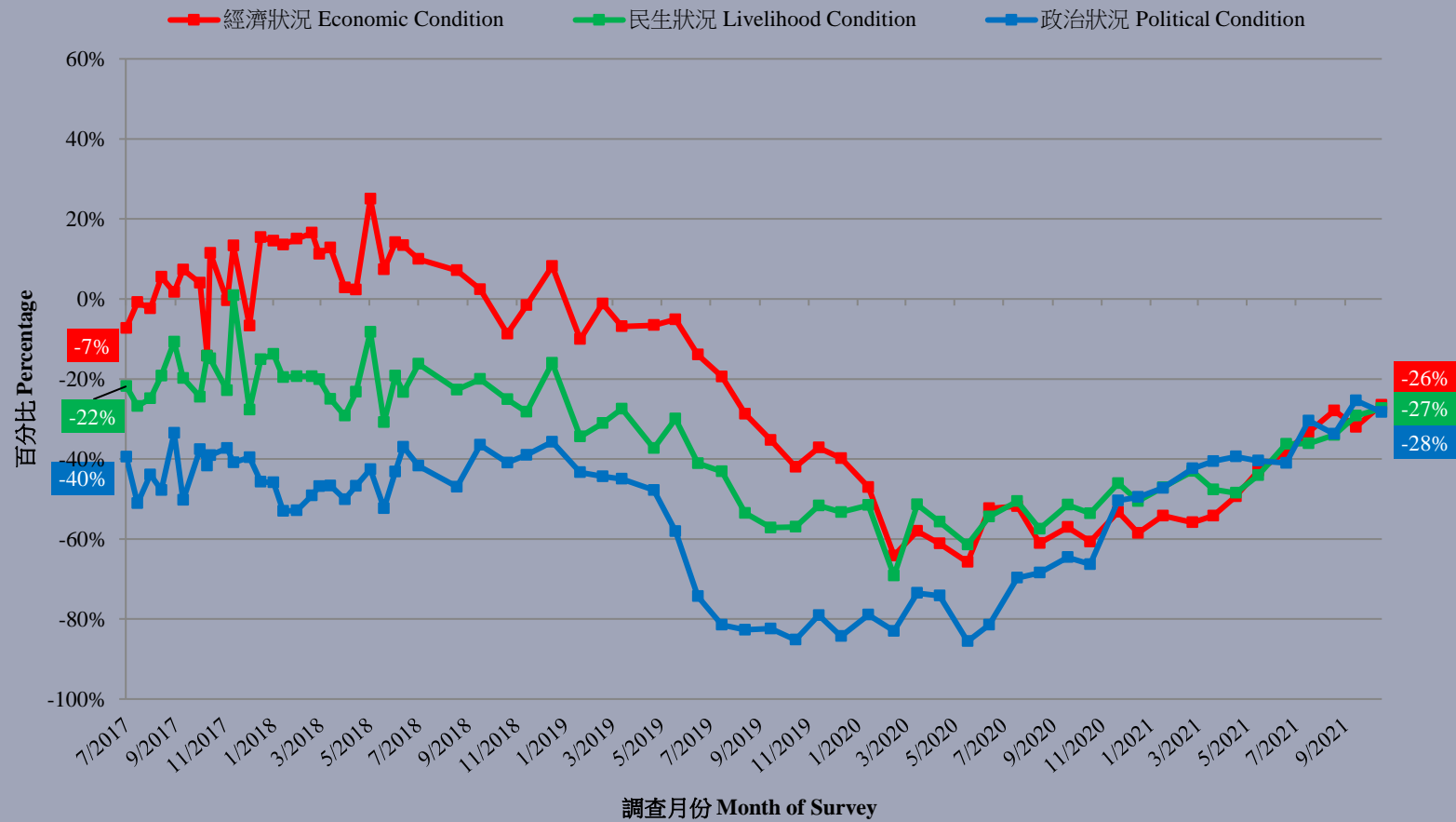
	16-23/9/2021	18-22/10/2021	Change	Record
Economic condition	-32%	-26%	▲6%	Record <b>high</b> since Jul. 2019
Livelihood condition	-29%	-27%	▲2%	Record <b>high</b> since Dec. 2018
Political condition	-25%	-28%	▼3%	Record <b>low</b> since Aug. 2021

- As for people's satisfaction with the current economic, livelihood and political conditions, the latest net satisfaction rates are negative 26, negative 27 and negative 28 percentage points respectively. All three net satisfaction rates have not changed significantly compared to a month ago, but that of livelihood condition has registered a **record high** since December 2018.

# Survey Result - Popularity of HKSAR Government

25

市民對社會狀況的評價滿意率淨值 (按次計算)  
Net satisfaction rates of people's appraisals of society's conditions (Per Poll)  
(7/2017 – 10/2021)



# Survey Topic

26

- Popularity of Chief Executive
- Popularity of HKSAR Government
  - People's satisfaction with the HKSAR Government
  - People's trust in the HKSAR Government
  - People's appraisals of society's conditions
- **Public Sentiment Index**
- Taiwan and Tibetan issues
  - Confidence on Cross-strait Reunification
  - Opinion on Taiwan's Rejoining the United Nations
  - Opinion on Applicability of "One Country, Two Systems" to Taiwan
  - Opinion on Independence of Taiwan
  - Opinion on Independence of Tibet

# Survey Result - Public Sentiment Index

27

## ● Public Sentiment Index (PSI)

	7/10/2021	22/10/2021	Change	Record
Public Sentiment Index (PSI)	85.4	<b>86.5</b>	<b>▲1.1</b>	Record <b>high</b> since Jun. 2019
Government Appraisal (GA)	79.6	<b>80.5</b>	<b>▲0.9</b>	Record <b>high</b> since Jun. 2019
Society Appraisal (SA)	87.0	<b>88.1</b>	<b>▲1.1</b>	Record <b>high</b> since Jun. 2019

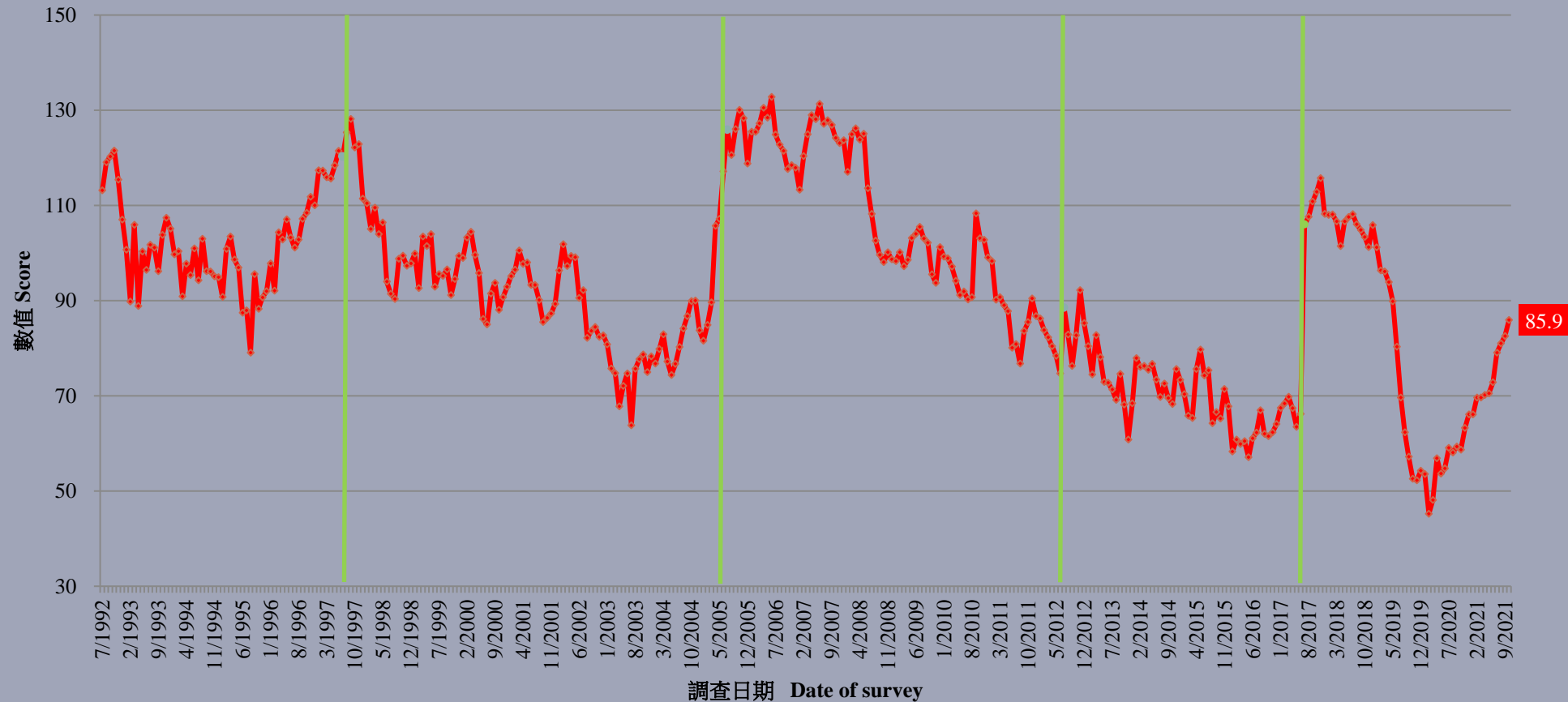
- All PSI, GA and SA scores range between 0 to 200, with 100 meaning normal.
- The latest PSI stands at 86.5, up by 1.1 points from early October. It can be considered as among the worst 18% across the past 20 years or so. Two component scores of PSI also can be considered as among the worst 10% and 21% across the past 20 years or so respectively. All three figures have again registered their **record high** since early June 2019.



# Survey Result - Public Sentiment Index

28

民情指數 (按月計算)  
Public Sentiment Index (monthly average)  
(7/1992 - 10/2021)



# Survey Topic

29

- Popularity of Chief Executive
- Popularity of HKSAR Government
  - People's satisfaction with the HKSAR Government
  - People's trust in the HKSAR Government
  - People's appraisals of society's conditions
- Public Sentiment Index
- Taiwan and Tibetan issues
  - Confidence on Cross-strait Reunification
  - Opinion on Taiwan's Rejoining the United Nations
  - Opinion on Applicability of "One Country, Two Systems" to Taiwan
  - Opinion on Independence of Taiwan
  - Opinion on Independence of Tibet

# Survey Result - Taiwan and Tibetan issues

30

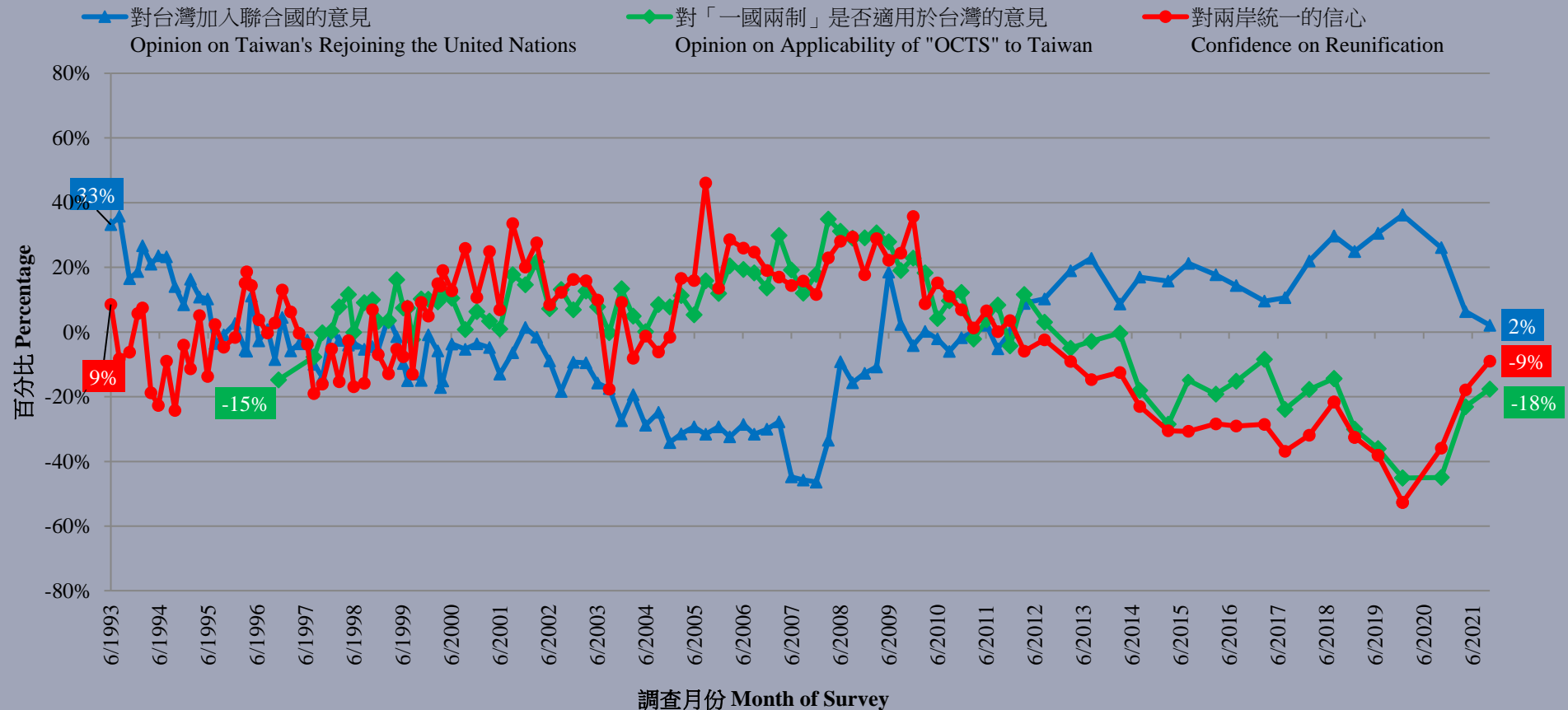
	19-22/4/2021	18-22/10/2021	Change	Record
Confidence in cross-strait reunification	33%	37%	▲4%	Record high since Aug. 2013
No confidence in cross-strait reunification	51%	46%	▼5%	Record low since Mar. 2013
Net confidence	-18%	-9%	▲9%	Record high since Aug. 2012
Taiwan rejoining the United Nations: Support rate	44%	40%	▼5%	Record low since Dec. 2011
Taiwan rejoining the United Nations: Opposition rate	38%	37%	--	--
Net support	6%	2%	▼4%	Record low since Dec. 2011
Believe “one country, two systems” is applicable to Taiwan	27%	31%	▲5%	Record high since Aug. 2018
Believe “one country, two systems” is not applicable to Taiwan	50%	49%	▼1%	Record low since Mar. 2017
Net value of applicability	-23%	-18%	▲5%	Record high since Aug. 2018

- Hong Kong people’s net confidence in the ultimate reunification across the strait stands at negative 9 percentage points, which has increased by 9 percentage points from half a year ago. Although the change has not gone beyond sampling error, the net confidence has registered a **record high** since 2012. Regarding international space, net support stands at positive 2 percentage points, registering another **record low** since 2011. Meanwhile, net value of applicability stands at negative 18 percentage points, registering a **record high** since 2018.

# Survey Result - Taiwan and Tibetan issues

31

市民對其他台灣問題的意見淨值 (按次計算)  
Net Value of Opinion on Other Taiwan Issue (Per Poll)  
(6/1993 – 10/2021)



# Survey Result - Taiwan and Tibetan issues

32

## ● Opinion on Independence of Taiwan

	19-22/4/2021	18-22/10/2021	Change	Record
Support rate	32%	26%	▼6% *	Record <b>low</b> since Mar. 2017
Opposition rate	50%	55%	▲5%	Record <b>high</b> since Mar. 2017
Net Support	-18%	-29%	▼10% *	Record <b>low</b> since Mar. 2017

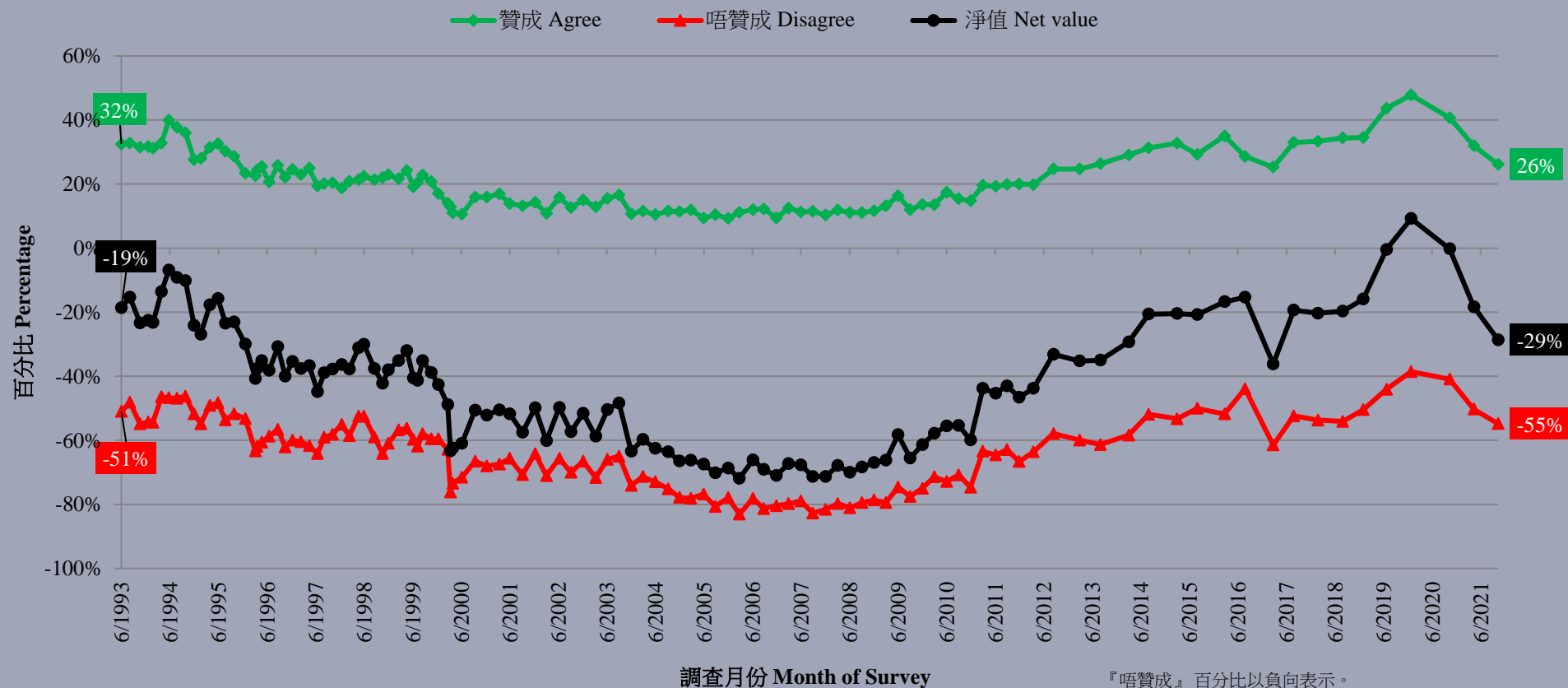
- As for the independence of Taiwan, 26% supported Taiwan's independence while 55% opposed it. Net support stands at negative 29 percentage points, which has dropped significantly by 10 percentage points from half a year ago, registering a **record low** since 2017.

\* Significant change

# Survey Result - Taiwan and Tibetan issues

33

市民贊成台灣獨立的比率 (按次計算)  
Opinion on Independence of Taiwan (Per Poll)  
(6/1993 – 10/2021)



調查月份 Month of Survey

『唔贊成』百分比以負向表示。  
Percentage of 'Disagree' is presented as negative

# Survey Result - Taiwan and Tibetan issues

34

## ● Opinion on Independence of Tibet

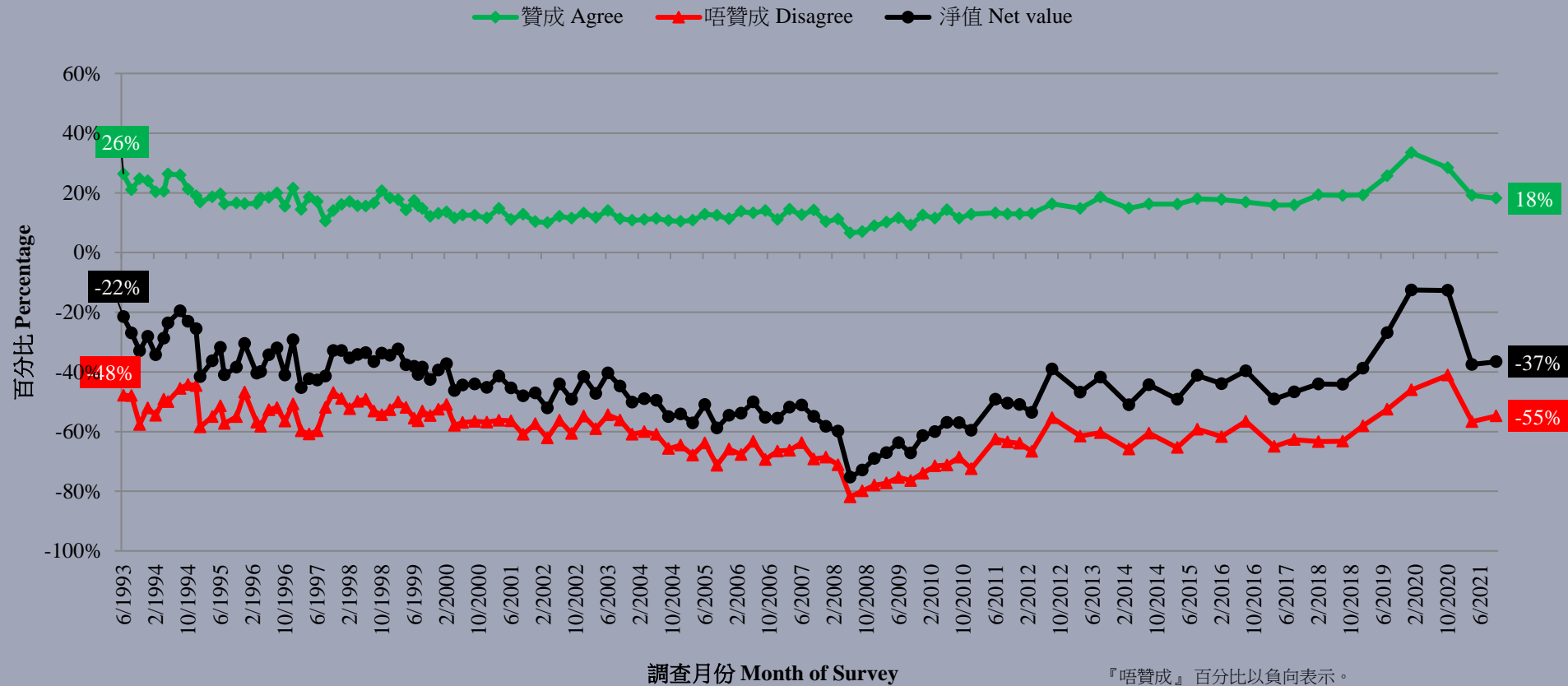
	19-22/4/2021	18-22/10/2021	Change	Record
Support rate	19%	18%	▼1%	Record <b>low</b> since Aug. 2017
Opposition rate	57%	55%	▼2%	Record <b>low</b> since Oct. 2020
Net Support	-38%	-37%	▲1%	Record <b>high</b> since Oct. 2020

- Regarding Tibetan issues, 55% of Hong Kong people interviewed opposed the independence of Tibet whereas 18% showed support. Net support stands at negative 37 percentage points, which has not changed much from half a year ago.

# Survey Result - Taiwan and Tibetan issues

35

市民贊成西藏獨立的比率 (按次計算)  
Opinion on Independence of Tibet (Per Poll)  
(6/1993 – 10/2021)



『唔贊成』百分比以負向表示。  
Percentage of 'Disagree' is presented as negative