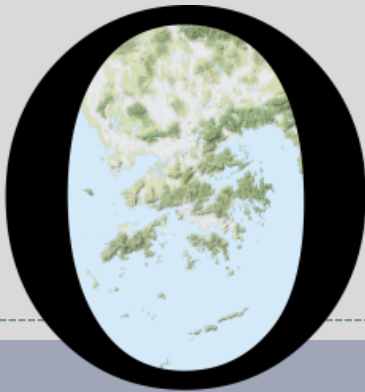


POP



HONG KONG PUBLIC OPINION PROGRAM

HONG KONG PUBLIC OPINION RESEARCH INSTITUTE

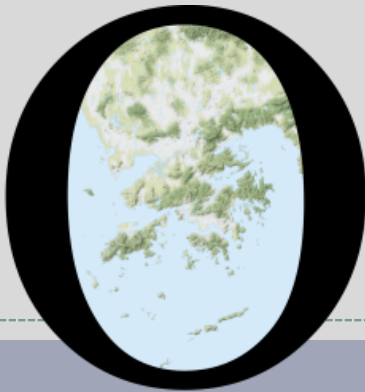
香港民意研究所 之 香港民意研究計劃

“We Hongkongers” Panel Survey

Latest Results

September 10, 2021

POP



HONG KONG PUBLIC OPINION PROGRAM

HONG KONG PUBLIC OPINION RESEARCH INSTITUTE

香港民意研究所 之 香港民意研究計劃

限聚指數

Group Gathering Prohibition Index

10/9/2021

樣本資料 - 限聚指數基準調查

Contact Information - Group Gathering Prohibition Index Benchmark Survey

3

	香港民研意見群組成員 HKPOP Panel
調查日期 Survey date	16/8 15:00 – 23/8 15:00
調查方法 Survey method	以電郵接觸群組成員，並於網上完成調查 Online survey
訪問對象 Target population	十二歲或以上的香港市民 Hong Kong residents aged 12+
總成功樣本 Total sample size	7,456
回應比率 Response rate	8.1%
抽樣誤差 Sampling error	95% 置信水平，百分比誤差 +/-1% Sampling error of percentages at +/-1% at 95% confidence level
加權方法 Weighting method	按照1) 政府統計處提供的全港人口年齡及性別分佈統計數字、各區議會人口數字； 2) 選舉事務處提供的區議會選舉結果；3) 常規調查中的特首評分分佈數字，以 「反覆多重加權法」作出調整。 The figures are rim-weighted according to 1) gender-age distribution of Hong Kong population and by District Councils population figures from Census and Statistics Department; 2) Voting results of District Councils Election from Registration and Electoral Office; 3) rating distribution of Chief Executive from regular tracking surveys.

限聚指數

Group Gathering Prohibition Index

4

- 最新調查日期 **Latest survey date: 16-23/8/2021 (N=7,456)**
- 上次調查日期 **Last survey date: 16-21/7/2021 (N=5,636)**
- 上上次調查日期 **Second last survey date: 18-23/6/2021 (N=6,158)**

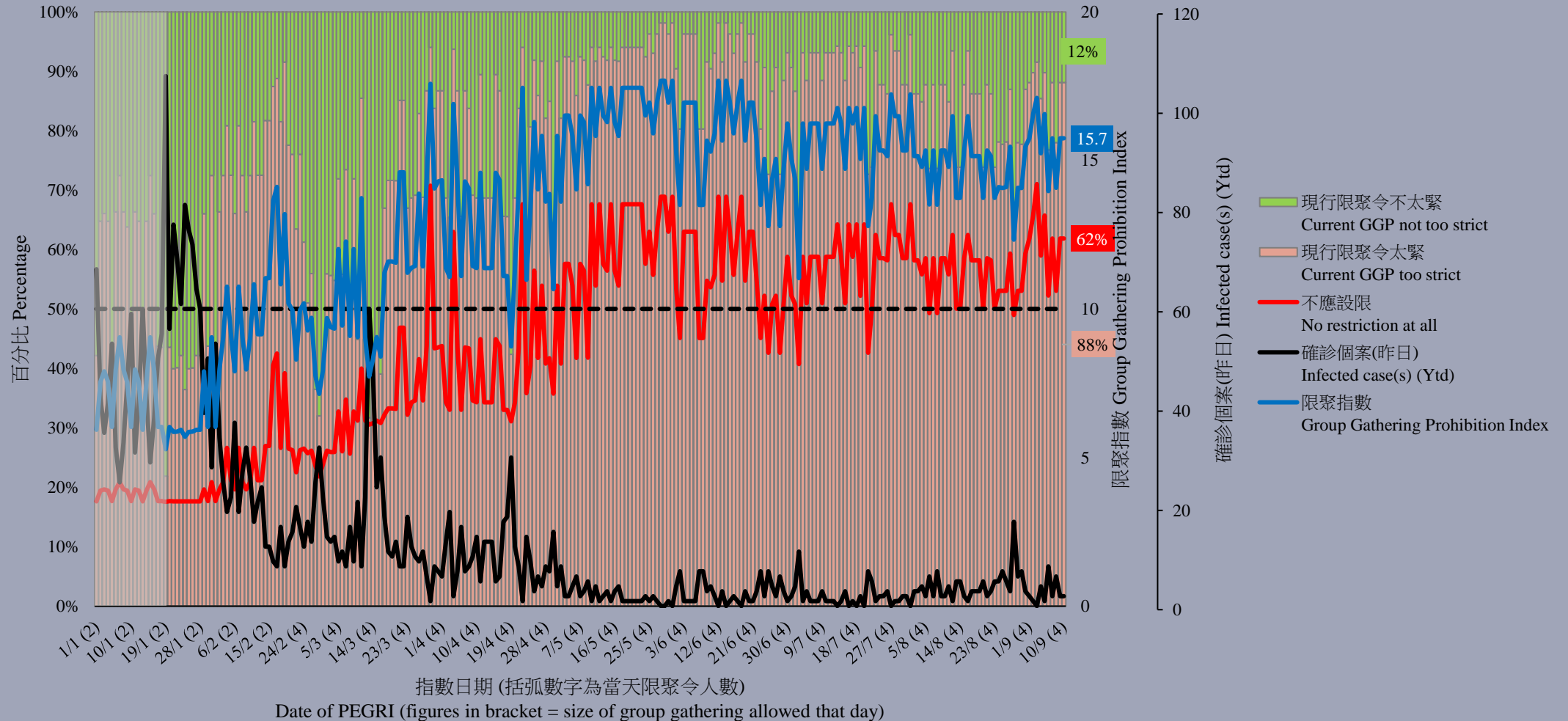
意見題目	Opinion Questions
<p>你認為香港應否無條件全面撤銷「限聚令」？</p> <ul style="list-style-type: none">▪ 應該無條件撤銷「限聚令」▪ 不應該，應視乎疫情而定▪ 不知道／很難說 <p>[追問沒有選擇應該“無條件撤銷「限聚令」”者] 你認為每天新增確診個案數應是多少，才適合將「限聚令」訂於2人？ 你認為每天新增確診個案數應是多少，才適合將「限聚令」訂於4人？ 你認為每天新增確診個案數應是多少，才適合將「限聚令」訂於8人？ 你認為每天新增確診個案數應是多少，才適合將「限聚令」訂於16人？ 你認為感染個案清零多少天後，限聚令應該全面撤銷？</p> <p>請於以下欄位列舉你認為合適的 [個案數 及 限聚人數] 組合.....</p>	<p>Do you think the regulation prohibiting gatherings of more than a specific number of people in public places should be completely lifted unconditionally in Hong Kong?</p> <ul style="list-style-type: none">▪ Yes, the ban should be lifted unconditionally▪ No, it should depend on the epidemic situation▪ Don't know / hard to say <p>[For respondents NOT answering “Yes, the ban should be lifted unconditionally”] How many newly confirmed cases each day should there be before it would be appropriate to prohibit gatherings of more than 2 people? How many newly confirmed cases each day should there be before it would be appropriate to prohibit gatherings of more than 4 people? How many newly confirmed cases each day should there be before it would be appropriate to prohibit gatherings of more than 8 people? How many newly confirmed cases each day should there be before it would be appropriate to prohibit gatherings of more than 16 people? After how many days of zero infection do you think the group gathering ban should be lifted altogether?</p> <p>Please list combinations of [number of cases & number of people allowed in gatherings] that you think is appropriate in the field below:</p>

調查結果 - 限聚接受程度

Survey Result – Group Gathering Prohibition Acceptance Level

5

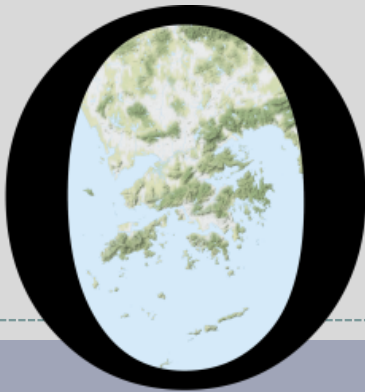
限聚接受程度 Group Gathering Prohibition Acceptance Level



獨立評論人潘麒智指出：「政府恢復『回港易』配額安排，豁免廣東省以外的其他內地省市及澳門的香港居民返港檢疫安排，是好的開始。期望政府方便之門，亦能盡快為本地業界打開，及進一步放寬限聚措施，為香港人解鎖。接納『與新冠病毒共存』，是香港唯一的出路，港府應盡快訂立策略，不要再慢十拍。」

Independent commentator KC Poon observed, “It is a good start for the government to resume quarantine exemption for persons returning either from Macau or Mainland areas other than Guangdong Province under Return2hk Scheme. I hope the government will soon lift the barrier for the local industries, and also relax the restrictions on gathering for Hong Kong people. The only way out for Hong Kong is to accept ‘coexistence with the virus’. The government should formulate a strategy immediately without delay.”

POP



HONG KONG PUBLIC OPINION PROGRAM

HONG KONG PUBLIC OPINION RESEARCH INSTITUTE

香港民意研究所 之 香港民意研究計劃

“We Hongkongers” Panel Survey

Latest Results

September 10, 2021

Contact Information - “We Hongkongers” Panel Survey

8

	HKPOP Panel
Date of survey	September 6, 3pm – September 9, 3pm
Survey method	Online survey
Target population	Hong Kong residents aged 12+
Total sample size	6,454
Response rate	7.1%
Sampling error	Sampling error of percentages at +/-1% at 95% confidence level
Weighting method	The figures are rim-weighted according to 1) gender-age distribution, educational attainment (highest level attended) distribution, economic activity status distribution of Hong Kong population and by District Councils population figures from Census and Statistics Department; 2) Voting results of District Councils Election from Registration and Electoral Office; 3) rating distribution of Chief Executive from regular tracking surveys.

Survey Result - “We Hongkongers” Panel Survey

9

- Latest survey period: 6-9/9/2021; Last survey date: 16-21/4/2021
- Question: Q1 How willing or unwilling are you to settle down in the Greater Bay Area outside Hong Kong and Macau?

	Pro-democracy camp supporters (n=5,475)	Non-pro-democracy camp supporters* (n=631)	Combined [^] (n=6,106)
Very willing	1% (▼1%)	20% (▲9%)	13% (▲6%)
Somewhat willing	5% (▲3%)	21% (▲3%)	15% (▲4%)
	6% (▲2%)	40% (▲12%)	29% (▲10%)
Half-half	2% (▼3%)	23% (▼6%)	16% (▼4%)
Somewhat unwilling	10% (▼6%)	7% (▲1%)	8% (▼2%)
Very unwilling	76% (▲2%)	29% (▼6%)	45% (▼6%)
	86% (▼4%)	36% (▼5%)	53% (▼8%)
Don't know / hard to say	5% (▲5%)	1% (▼2%)	3% (▲1%)
Mean [†]	1.4 (▼0.1)	3.0 (▲0.3)	2.4 (▲0.3)

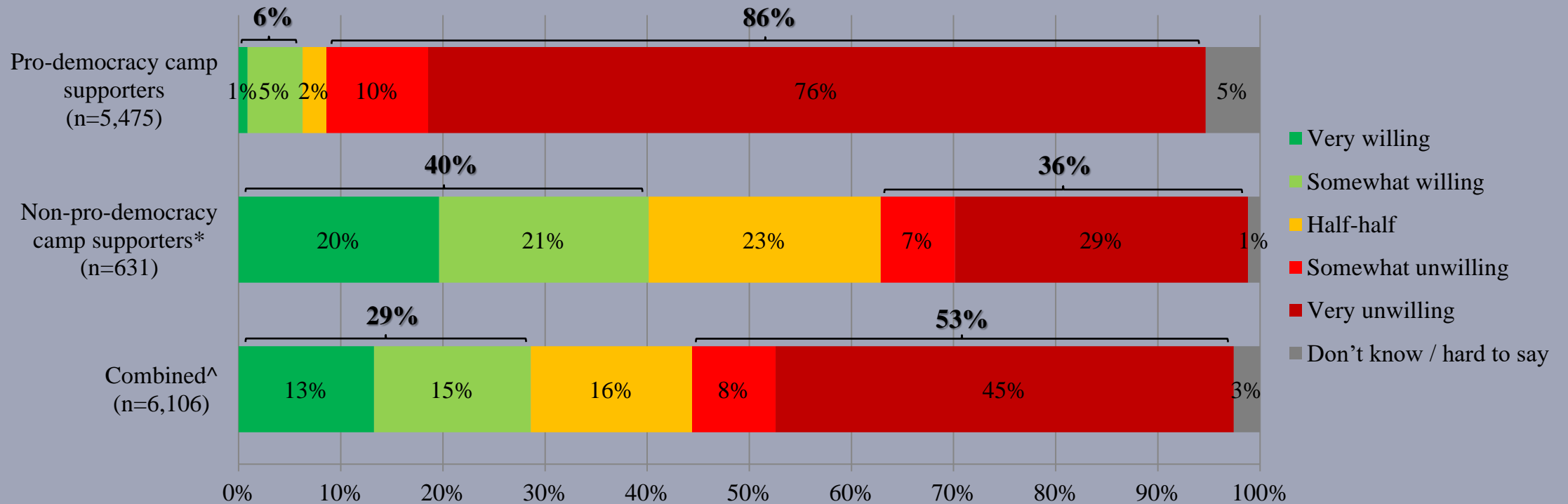
* Include: pro-establishment camp supporters, centrist supporters, no political inclination / politically neutral / do not belong to any camp

[^] The aggregated figures come from adjusting the by-group weighted figures using ratio of “pan-democratic” vs “non-pan-democratic” collected in regular tracking survey.

[†] The mean value is calculated by quantifying all individual responses into 1, 2, 3, 4, 5 marks according to their degree of positive level, where 1 is the lowest and 5 the highest, and then calculate the sample mean.

Survey Result - “We Hongkongers” Panel Survey

- **Latest survey period: 6-9/9/2021; Last survey date: 16-21/4/2021**
- **Question: Q1 How willing or unwilling are you to settle down in the Greater Bay Area outside Hong Kong and Macau?**



* Include: pro-establishment camp supporters, centrist supporters, no political inclination / politically neutral / do not belong to any camp

^ The aggregated figures come from adjusting the by-group weighted figures using ratio of “pan-democratic” vs “non-pan-democratic” collected in regular tracking survey.

Survey Result - “We Hongkongers” Panel Survey

11

- **Cross-tabulation Analysis[#] (n=6,101)**

		Age		
		12 – 29 (n=842)	30 – 49 (n=2,968)	50 or above (n=2,291)
Q1 How willing or unwilling are you to settle down in the Greater Bay Area outside Hong Kong and Macau?	Willing	12% (▲2%)	29% (▲5%)	33% (▲15%)
	Half-half	8% (▼2%)	22% (▼1%)	14% (▼6%)
	Unwilling	80% (▲2%)	46% (▼7%)	49% (▼10%)
	Don't know / hard to say	<1% (▼2%)	3% (▲3%)	3% (▲1%)

[#] The values in each column add up to 100%

Survey Result - “We Hongkongers” Panel Survey

12

- Latest survey period: 6-9/9/2021; Last survey date: 16-21/4/2021
- **Question: Q2 How willing or unwilling are you to work in the Greater Bay Area outside Hong Kong and Macau?**

	Pro-democracy camp supporters (n=5,478)	Non-pro-democracy camp supporters* (n=631)	Combined^ (n=6,109)
Very willing	1% (▼3%)	20% (▲6%)	13% (▲4%)
Somewhat willing	4% (▲4%)	19% (--)	13% (▲2%)
	4% (▼8%)	39% (▲6%)	27% (▲6%)
Half-half	5% (▼2%)	16% (▼3%)	12% (▼2%)
Somewhat unwilling	9% (▼3%)	3% (▼6%)	5% (▼5%)
Very unwilling	66% (▼5%)	27% (▼4%)	41% (▼7%)
	75% (▼8%)	30% (▼10%)	46% (▼12%)
Not applicable (not in the labour force)	8% (▲2%)	14% (▲6%)	12% (▲5%)
Don't know / hard to say	7% (▲7%)	1% (--)	3% (▲2%)
Mean†	1.4 (--)	3.0 (▲0.3)	2.5 (▲0.3)

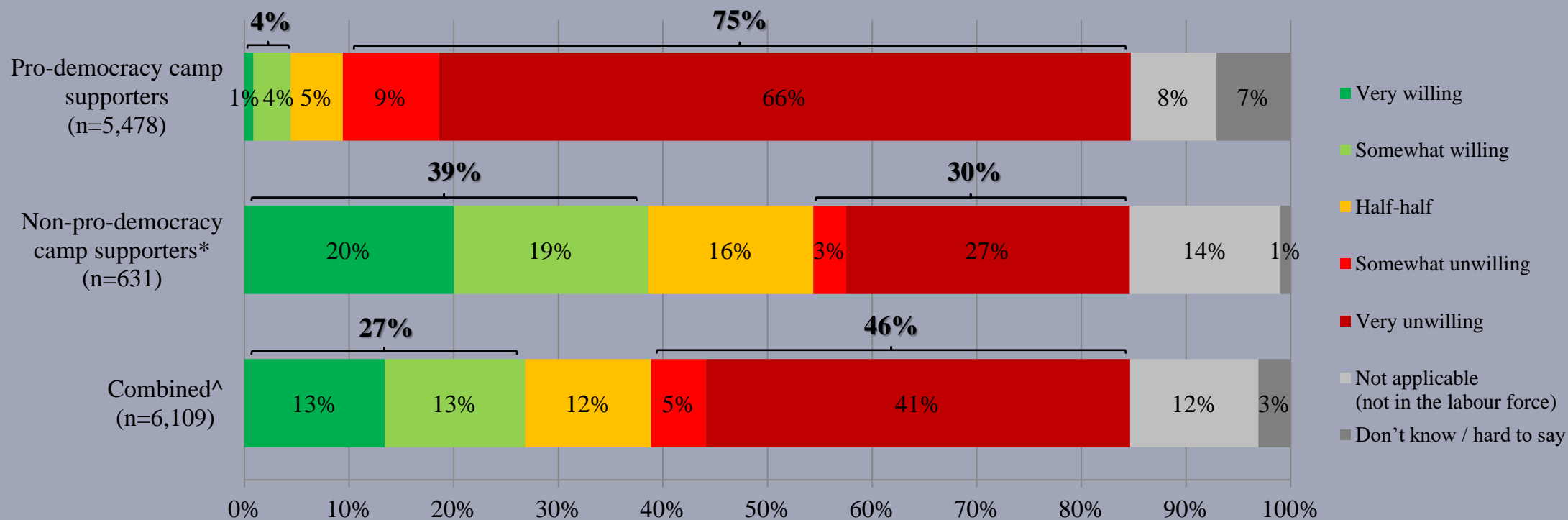
* Include: pro-establishment camp supporters, centrist supporters, no political inclination / politically neutral / do not belong to any camp

^ The aggregated figures come from adjusting the by-group weighted figures using ratio of “pan-democratic” vs “non-pan-democratic” collected in regular tracking survey.

† The mean value is calculated by quantifying all individual responses into 1, 2, 3, 4, 5 marks according to their degree of positive level, where 1 is the lowest and 5 the highest, and then calculate the sample mean.

Survey Result - “We Hongkongers” Panel Survey

- **Latest survey period: 6-9/9/2021; Last survey date: 16-21/4/2021**
- **Question: Q2 How willing or unwilling are you to work in the Greater Bay Area outside Hong Kong and Macau?**



* Include: pro-establishment camp supporters, centrist supporters, no political inclination / politically neutral / do not belong to any camp

^ The aggregated figures come from adjusting the by-group weighted figures using ratio of “pan-democratic” vs “non-pan-democratic” collected in regular tracking survey.

Survey Result - “We Hongkongers” Panel Survey

- **Cross-tabulation Analysis[#] (n=6,104)**

		Age		
		12 – 29 (n=842)	30 – 49 (n=2,970)	50 or above (n=2,292)
Q2 How willing or unwilling are you to work in the Greater Bay Area outside Hong Kong and Macau?	Willing	13% (▲8%)	31% (--)	28% (▲8%)
	Half-half	4% (▼8%)	21% (▲4%)	9% (▼3%)
	Unwilling	72% (▲1%)	42% (▼10%)	41% (▼16%)
	Not applicable (not in the labour force)	10% (▲1%)	3% (▲3%)	18% (▲7%)
	Don't know / hard to say	<1% (▼2%)	3% (▲3%)	4% (▲4%)

[#] The values in each column add up to 100%