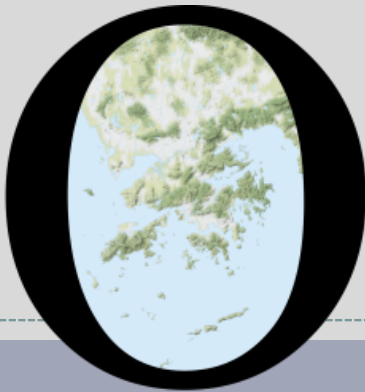


POP



HONG KONG PUBLIC OPINION PROGRAM

HONG KONG PUBLIC OPINION RESEARCH INSTITUTE

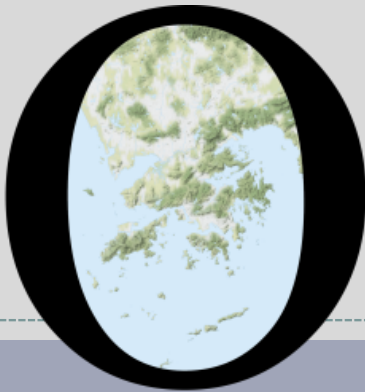
香港民意研究所 之 香港民意研究計劃

“We Hongkongers” Panel Survey

Latest Results

September 3, 2021

POP



HONG KONG PUBLIC OPINION PROGRAM

HONG KONG PUBLIC OPINION RESEARCH INSTITUTE

香港民意研究所 之 香港民意研究計劃

限聚指數

Group Gathering Prohibition Index

3/9/2021

樣本資料 - 限聚指數基準調查

Contact Information - Group Gathering Prohibition Index Benchmark Survey

3

	香港民研意見群組成員 HKPOP Panel
調查日期 Survey date	16/8 15:00 – 23/8 15:00
調查方法 Survey method	以電郵接觸群組成員，並於網上完成調查 Online survey
訪問對象 Target population	十二歲或以上的香港市民 Hong Kong residents aged 12+
總成功樣本 Total sample size	7,456
回應比率 Response rate	8.1%
抽樣誤差 Sampling error	95% 置信水平，百分比誤差 +/-1% Sampling error of percentages at +/-1% at 95% confidence level
加權方法 Weighting method	按照1) 政府統計處提供的全港人口年齡及性別分佈統計數字、各區議會人口數字； 2) 選舉事務處提供的區議會選舉結果；3) 常規調查中的特首評分分佈數字，以 「反覆多重加權法」作出調整。 The figures are rim-weighted according to 1) gender-age distribution of Hong Kong population and by District Councils population figures from Census and Statistics Department; 2) Voting results of District Councils Election from Registration and Electoral Office; 3) rating distribution of Chief Executive from regular tracking surveys.

限聚指數

Group Gathering Prohibition Index

4

- **最新調查日期 Latest survey date: 16-23/8/2021 (N=7,456)**
- **上次調查日期 Last survey date: 16-21/7/2021 (N=5,636)**
- **上上次調查日期 Second last survey date: 18-23/6/2021 (N=6,158)**

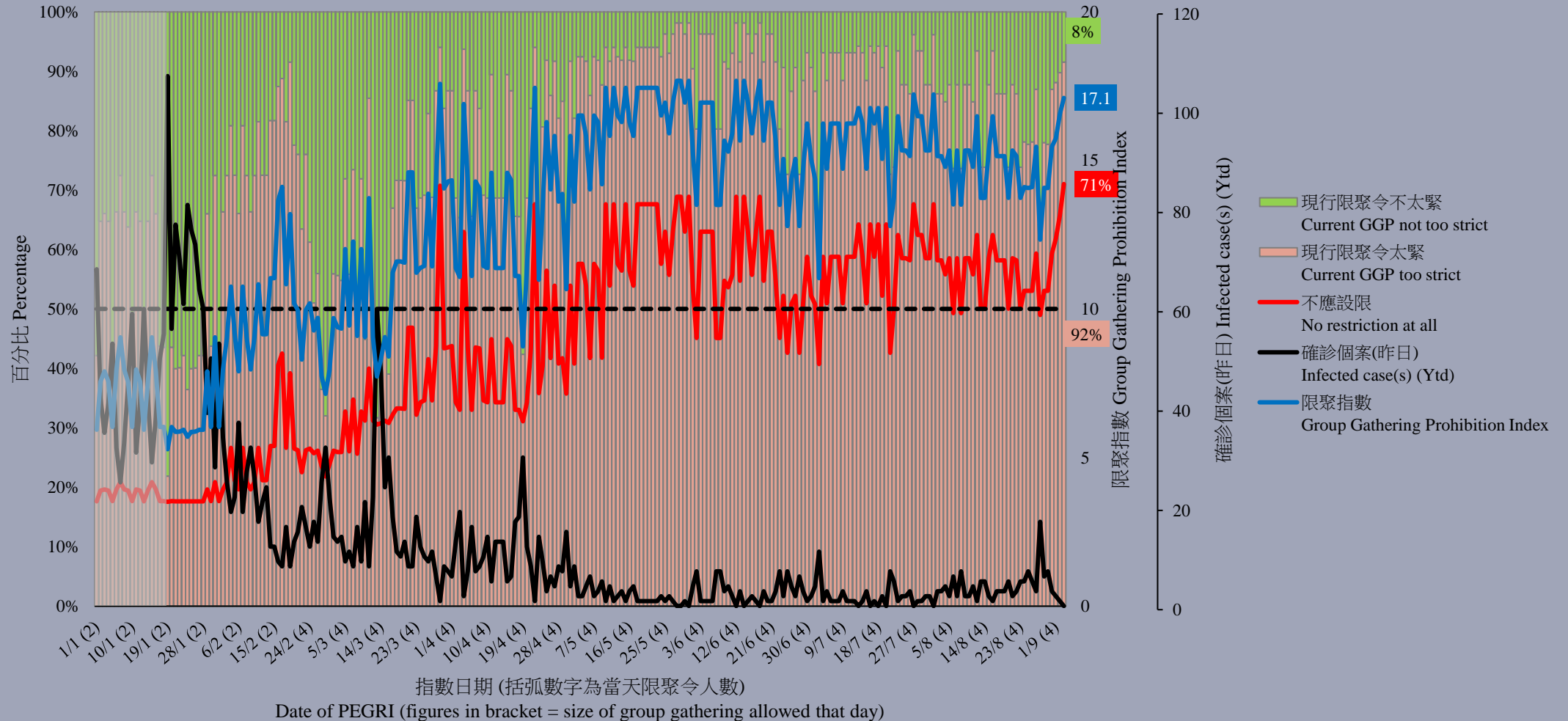
意見題目	Opinion Questions
<p>你認為香港應否無條件全面撤銷「限聚令」？</p> <ul style="list-style-type: none">▪ 應該無條件撤銷「限聚令」▪ 不應該，應視乎疫情而定▪ 不知道／很難說 <p>[追問沒有選擇應該“無條件撤銷「限聚令」”者]</p> <p>你認為每天新增確診個案數應是多少，才適合將「限聚令」訂於2人？</p> <p>你認為每天新增確診個案數應是多少，才適合將「限聚令」訂於4人？</p> <p>你認為每天新增確診個案數應是多少，才適合將「限聚令」訂於8人？</p> <p>你認為每天新增確診個案數應是多少，才適合將「限聚令」訂於16人？</p> <p>你認為感染個案清零多少天後，限聚令應該全面撤銷？</p> <p>請於以下欄位列舉你認為合適的 [個案數 及 限聚人數] 組合.....</p>	<p>Do you think the regulation prohibiting gatherings of more than a specific number of people in public places should be completely lifted unconditionally in Hong Kong?</p> <ul style="list-style-type: none">▪ Yes, the ban should be lifted unconditionally▪ No, it should depend on the epidemic situation▪ Don't know / hard to say <p>[For respondents NOT answering “Yes, the ban should be lifted unconditionally”]</p> <p>How many newly confirmed cases each day should there be before it would be appropriate to prohibit gatherings of more than 2 people?</p> <p>How many newly confirmed cases each day should there be before it would be appropriate to prohibit gatherings of more than 4 people?</p> <p>How many newly confirmed cases each day should there be before it would be appropriate to prohibit gatherings of more than 8 people?</p> <p>How many newly confirmed cases each day should there be before it would be appropriate to prohibit gatherings of more than 16 people?</p> <p>After how many days of zero infection do you think the group gathering ban should be lifted altogether?</p> <p>Please list combinations of [number of cases & number of people allowed in gatherings] that you think is appropriate in the field below:</p>

調查結果 - 限聚接受程度

Survey Result – Group Gathering Prohibition Acceptance Level

5

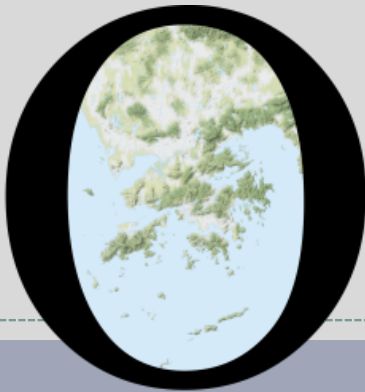
限聚接受程度 Group Gathering Prohibition Acceptance Level



民生大聯盟發言人章彤輝博士指出，「政府公佈將延長未來一年豁免或寬減36類收費的措施，庫房收入減少約20億，儘管牌費只佔營運開支一小部分，但對百業待興的香港社會，多少有正面的鼓勵。特首即將發表施政報告，到底政府可否帶領香港走向復甦，能否小政府大承擔，我們拭目以待。」

Dr Tung-fai Cheung, Spokesman of Alliance of Revitalizing Economy and Livelihood, observed, “The government announced that it would waive 36 types of licence fees for one more year, resulting a drop of about 2 billion dollars in treasury income. Even though licence fee is just a small part of the operation cost, it is still an encouraging move to the trades. The Chief Executive would soon deliver a Policy Address, let us wait and see if our government could remain small while taking big ventures, and lead Hong Kong to economic recovery.”

POP



HONG KONG PUBLIC OPINION PROGRAM

HONG KONG PUBLIC OPINION RESEARCH INSTITUTE

香港民意研究所 之 香港民意研究計劃

“We Hongkongers” Panel Survey

Latest Results

September 3, 2021

Contact Information - “We Hongkongers” Panel Survey

8

	HKPOP Panel
Date of survey	August 27, 3pm – September 1, 3pm
Survey method	Online survey
Target population	Hong Kong residents aged 12+
Total sample size	4,513
Response rate	4.9%
Sampling error	Sampling error of percentages at +/-1% at 95% confidence level
Weighting method	The figures are rim-weighted according to 1) gender-age distribution, educational attainment (highest level attended) distribution, economic activity status distribution of Hong Kong population and by District Councils population figures from Census and Statistics Department; 2) Voting results of District Councils Election from Registration and Electoral Office; 3) rating distribution of Chief Executive from regular tracking surveys.

Survey Result - “We Hongkongers” Panel Survey

9

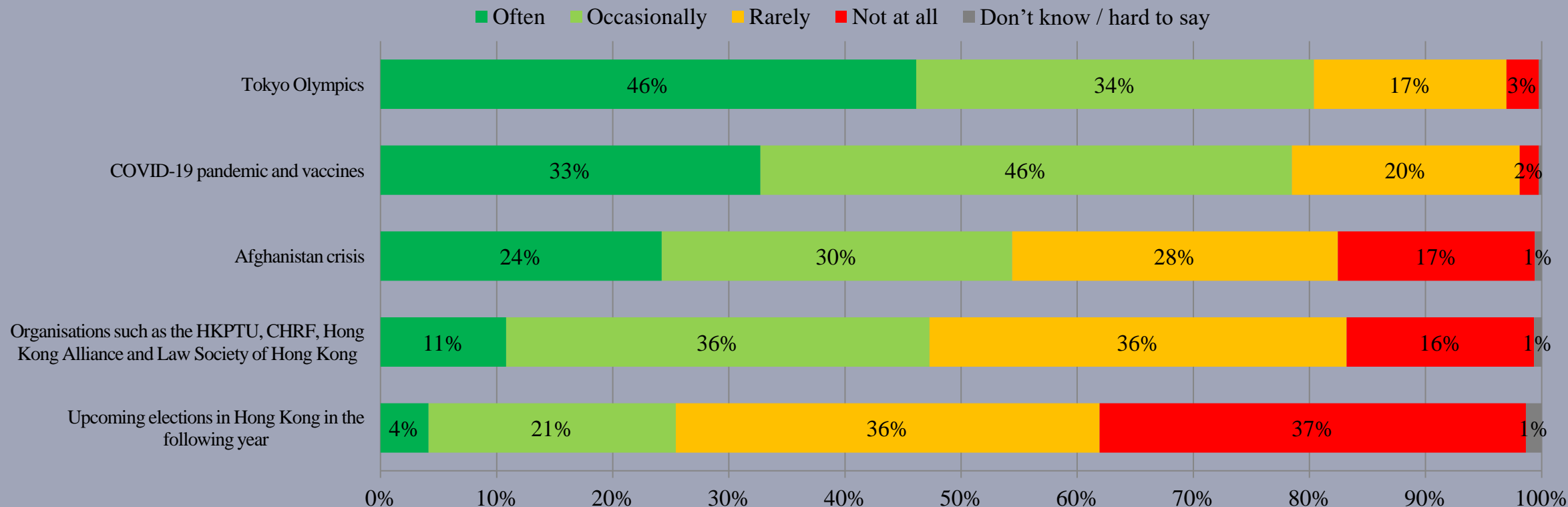
- **Latest survey period: 27/8-1/9/2021**
- **Question: Q1 How often did you mention or discuss the following with other people in the past one month? [Question order to be randomized by computer]**

Combined[^]	Often	Occasionally	Rarely	Not at all	Don't know / hard to say
Tokyo Olympics	46%	34%	17%	3%	<1%
COVID-19 pandemic and vaccines	33%	46%	20%	2%	<1%
Afghanistan crisis	24%	30%	28%	17%	1%
Organisations such as the HKPTU, CHRF, Hong Kong Alliance and Law Society of Hong Kong	11%	36%	36%	16%	1%
Upcoming elections in Hong Kong in the following year	4%	21%	36%	37%	1%

[^] The aggregated figures come from adjusting the by-group weighted figures using ratio of “pan-democratic” vs “non-pan-democratic” collected in regular tracking survey.

Survey Result - “We Hongkongers” Panel Survey

- **Latest survey period: 27/8-1/9/2021**
- **Question: Q1 How often did you mention or discuss the following with other people in the past one month? [Question order to be randomized by computer]**

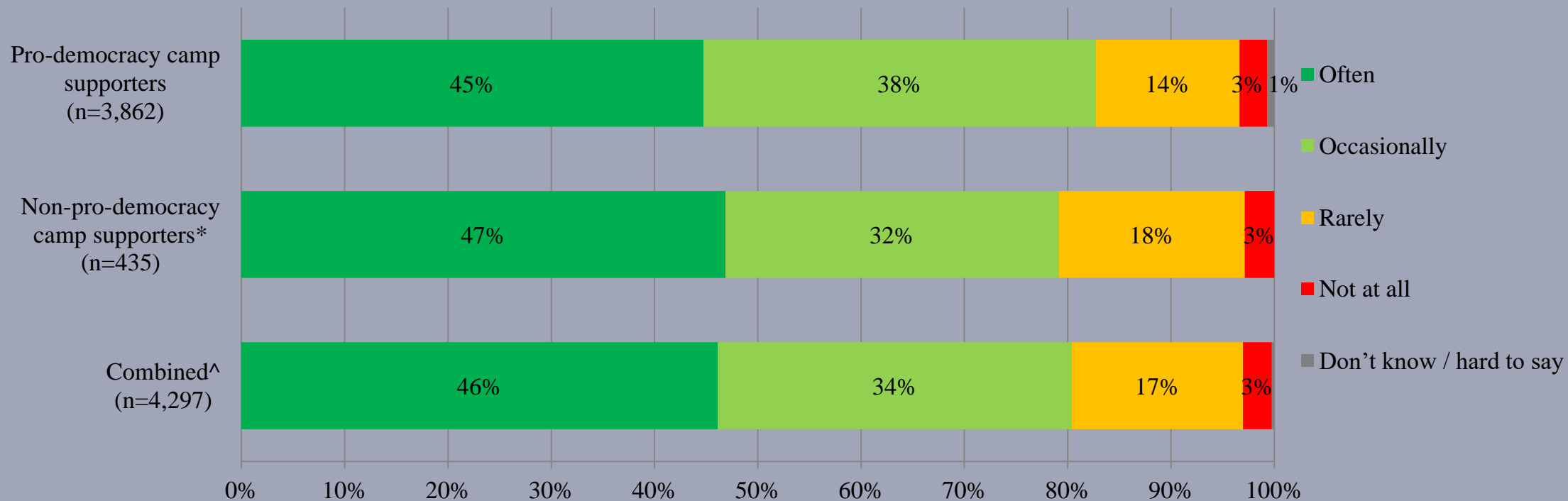


^ The aggregated figures come from adjusting the by-group weighted figures using ratio of “pan-democratic” vs “non-pan-democratic” collected in regular tracking survey.

Survey Result - “We Hongkongers” Panel Survey

12

- **Latest survey period: 16-19/8/2021**
- **Question: Q1c How often did you mention or discuss the Tokyo Olympics with other people in the past one month?**



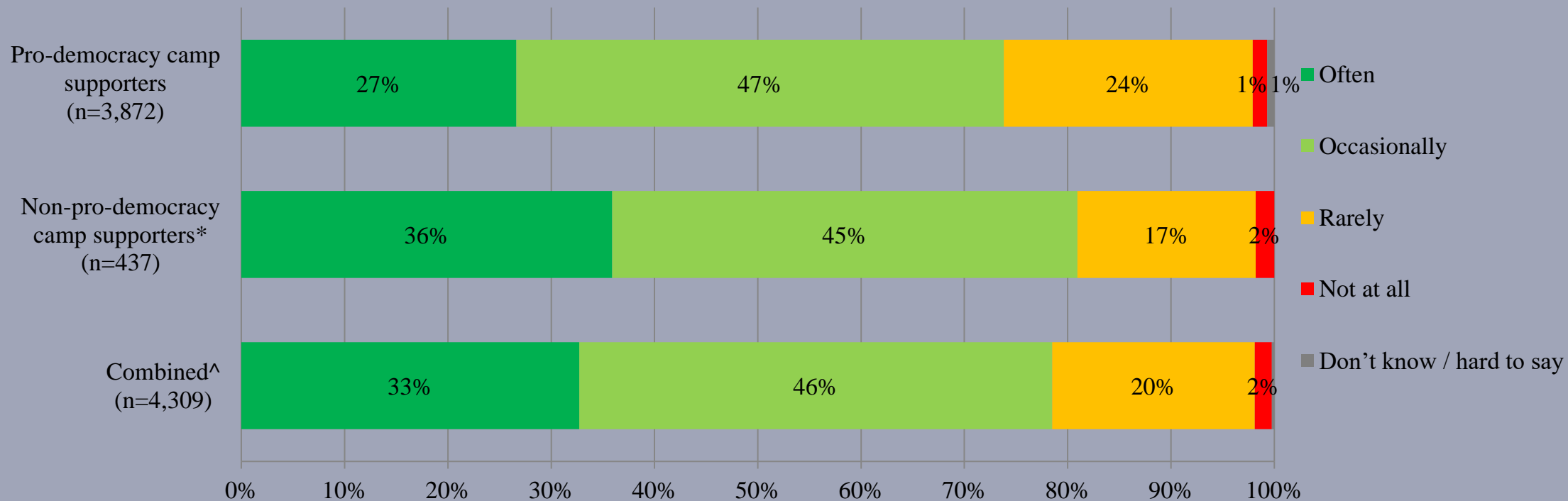
* Include: pro-establishment camp supporters, centrist supporters, no political inclination / politically neutral / do not belong to any camp

^ The aggregated figures come from adjusting the by-group weighted figures using ratio of “pan-democratic” vs “non-pan-democratic” collected in regular tracking survey.

Survey Result - “We Hongkongers” Panel Survey

14

- **Latest survey period: 16-19/8/2021**
- **Question: Q1e How often did you mention or discuss the COVID-19 pandemic and vaccines with other people in the past one month?**



* Include: pro-establishment camp supporters, centrist supporters, no political inclination / politically neutral / do not belong to any camp

^ The aggregated figures come from adjusting the by-group weighted figures using ratio of “pan-democratic” vs “non-pan-democratic” collected in regular tracking survey.

Survey Result - “We Hongkongers” Panel Survey

- **Latest survey period: 16-19/8/2021**
- **Question: Q1d How often did you mention or discuss the Afghanistan crisis with other people in the past one month?**



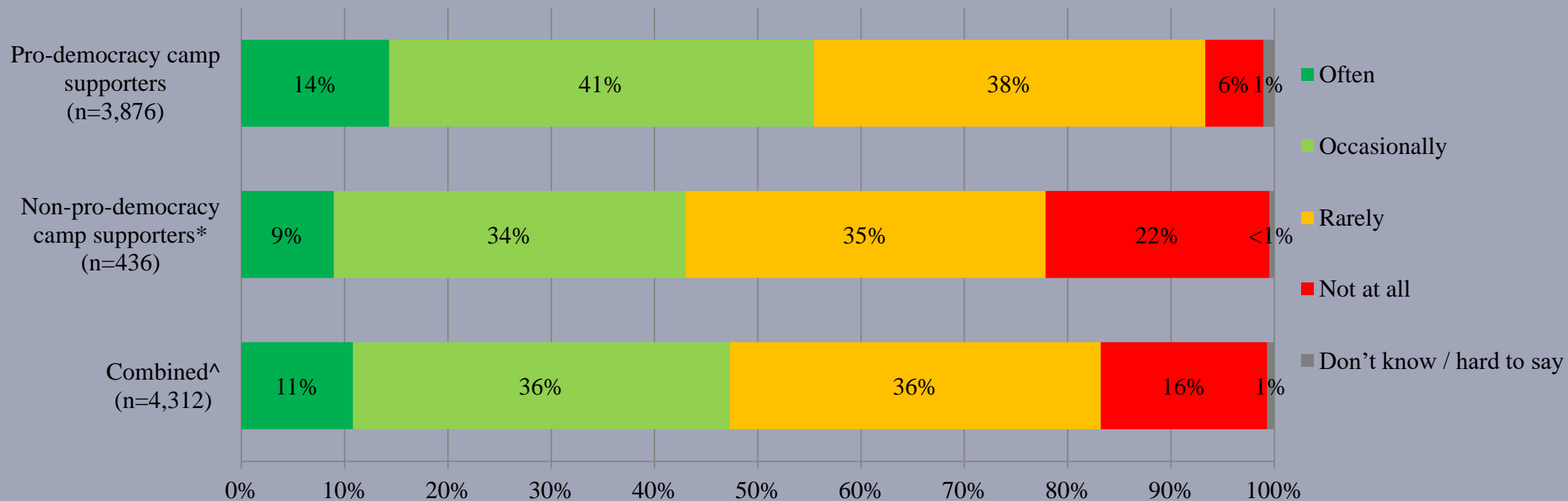
* Include: pro-establishment camp supporters, centrist supporters, no political inclination / politically neutral / do not belong to any camp

^ The aggregated figures come from adjusting the by-group weighted figures using ratio of “pan-democratic” vs “non-pan-democratic” collected in regular tracking survey.

Survey Result - “We Hongkongers” Panel Survey

18

- **Latest survey period: 27/8-1/9/2021**
- **Question: Q1b How often did you mention or discuss the organisations such as the Professional Teachers’ Union, Civil Human Rights Front, Hong Kong Alliance in Support of Patriotic Democratic Movements of China and Law Society of Hong Kong with other people in the past one month?**



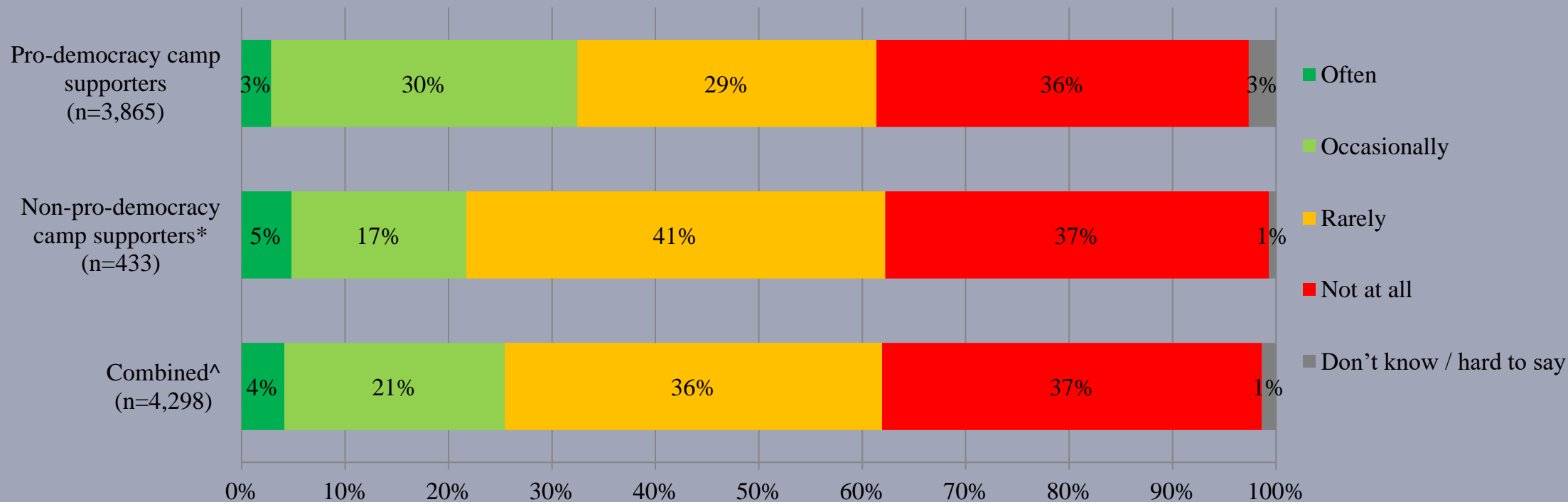
* Include: pro-establishment camp supporters, centrist supporters, no political inclination / politically neutral / do not belong to any camp

^ The aggregated figures come from adjusting the by-group weighted figures using ratio of “pan-democratic” vs “non-pan-democratic” collected in regular tracking survey.

Survey Result - “We Hongkongers” Panel Survey

20

- **Latest survey period: 27/8-1/9/2021**
- **Question: Q1a How often did you mention or discuss the upcoming elections in Hong Kong in the following year (including the Election Committee, Legislative Council and Chief Executive Election) with other people in the past one month?**



* Include: pro-establishment camp supporters, centrist supporters, no political inclination / politically neutral / do not belong to any camp

^ The aggregated figures come from adjusting the by-group weighted figures using ratio of “pan-democratic” vs “non-pan-democratic” collected in regular tracking survey.