

POP



HONG KONG PUBLIC OPINION PROGRAM

HONG KONG PUBLIC OPINION RESEARCH INSTITUTE

香港民意研究所 之 香港民意研究計劃

Community Democracy Project -

Community Health Module

Latest Results

August 14, 2020

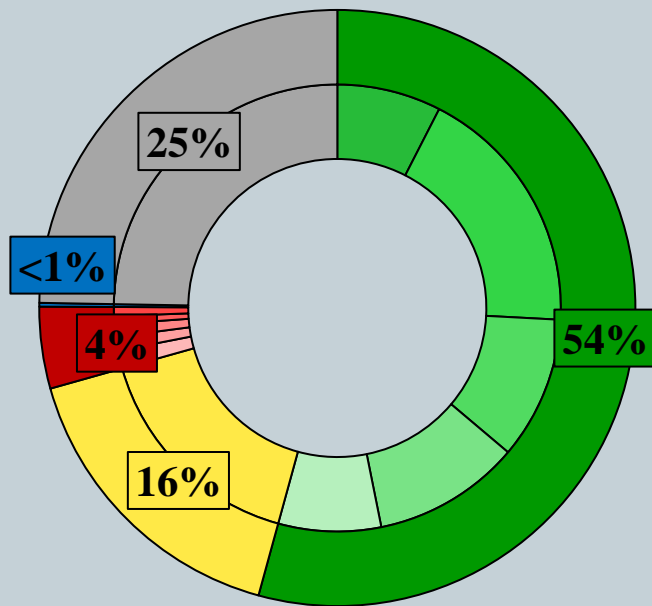
Contact Information - Community Health Module

2

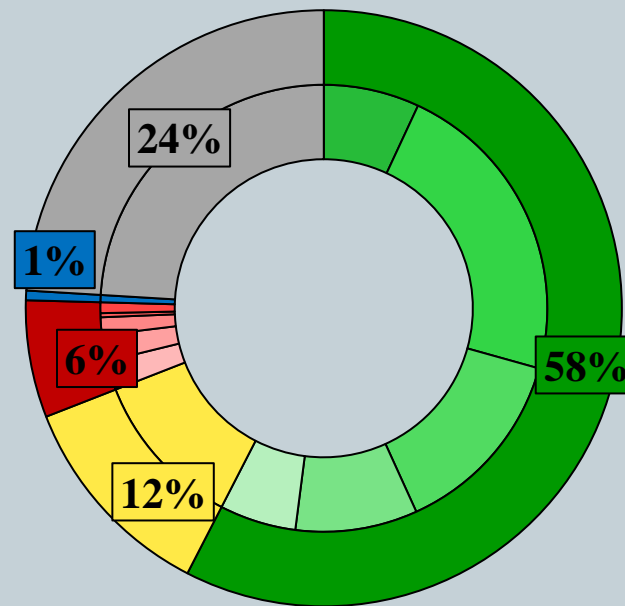
	HKPOP Panel	
Date of survey	August 6, 3pm – August 13, 3pm	
Survey method	Online survey	
Target population	Hong Kong residents aged 12+	
	Representative Panel	Volunteer Panel
Total sample size	768	7,860
Response rate	9.8%	11.7%
Sampling error	Sampling error of percentages at +/-4% at 95% confidence level	Sampling error of percentages at +/-1% at 95% confidence level
Weighting method	The figures are rim-weighted according to 1) gender-age distribution of Hong Kong population and by District Councils population figures from Census and Statistics Department; 2) Voting results of District Councils Election from Registration and Electoral Office; 3) rating distribution of Chief Executive from regular tracking surveys.	

Survey Result - Community Health Module

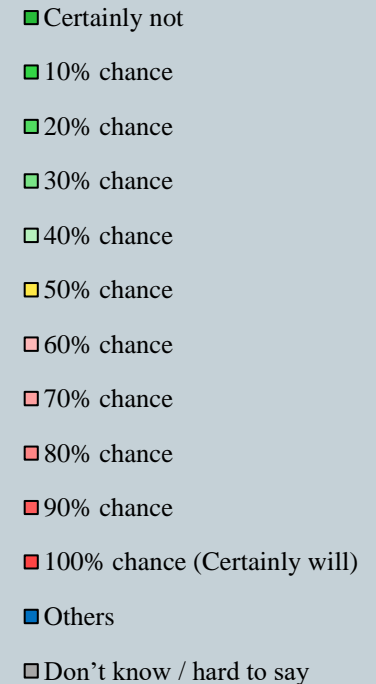
- Latest survey period: 6-13/8/2020
- Question: How likely do you think it is that you will contract novel coronavirus pneumonia over the next one month?



Representative Panel



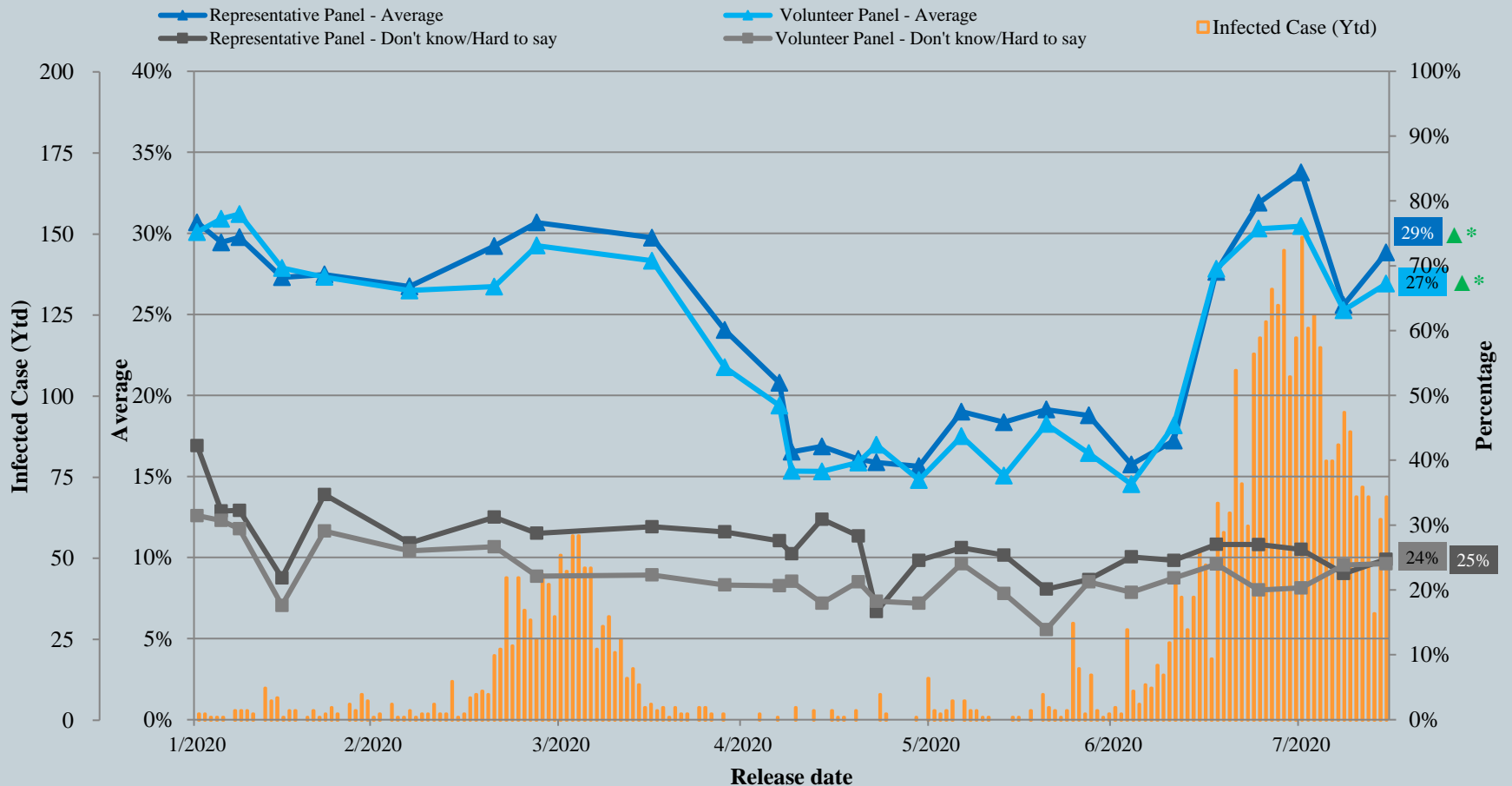
Volunteer Panel



^ Answer options included: 0-10 rating scale, others and don't know / hard to say.

Survey Result - Community Health Module

Assessment of the public's expected chance of COVID-19 infection



^ Answer options included: 0-10 rating scale, others and don't know / hard to say.

* Significant change

Survey Result - Community Health Module

5

- Latest survey period: 6-13/8/2020
- Last survey period: 30/7-6/8/2020 (*Representative Panel N=861 Volunteer Panel N=8,474*)

Opinion Question [^]		Representative Panel (N=768)				Volunteer Panel (N=7,856)			
		Satisfied	Half-half	Dissatisfied	Mean [†]	Satisfied	Half-half	Dissatisfied	Mean [†]
Q2 How satisfied or dissatisfied are you with the government's performance in handling novel coronavirus pneumonia?	Latest	24% ▲*	15% ▼*	60%	2.2	25% ▲*	9% ▼*	66%	2.1 ▲*
	Last	18%	21%	60%	2.2	23%	11%	66%	2.1

[^] Answer options included: very much satisfied, somewhat satisfied, half-half, somewhat dissatisfied, very much dissatisfied and don't know / hard to say

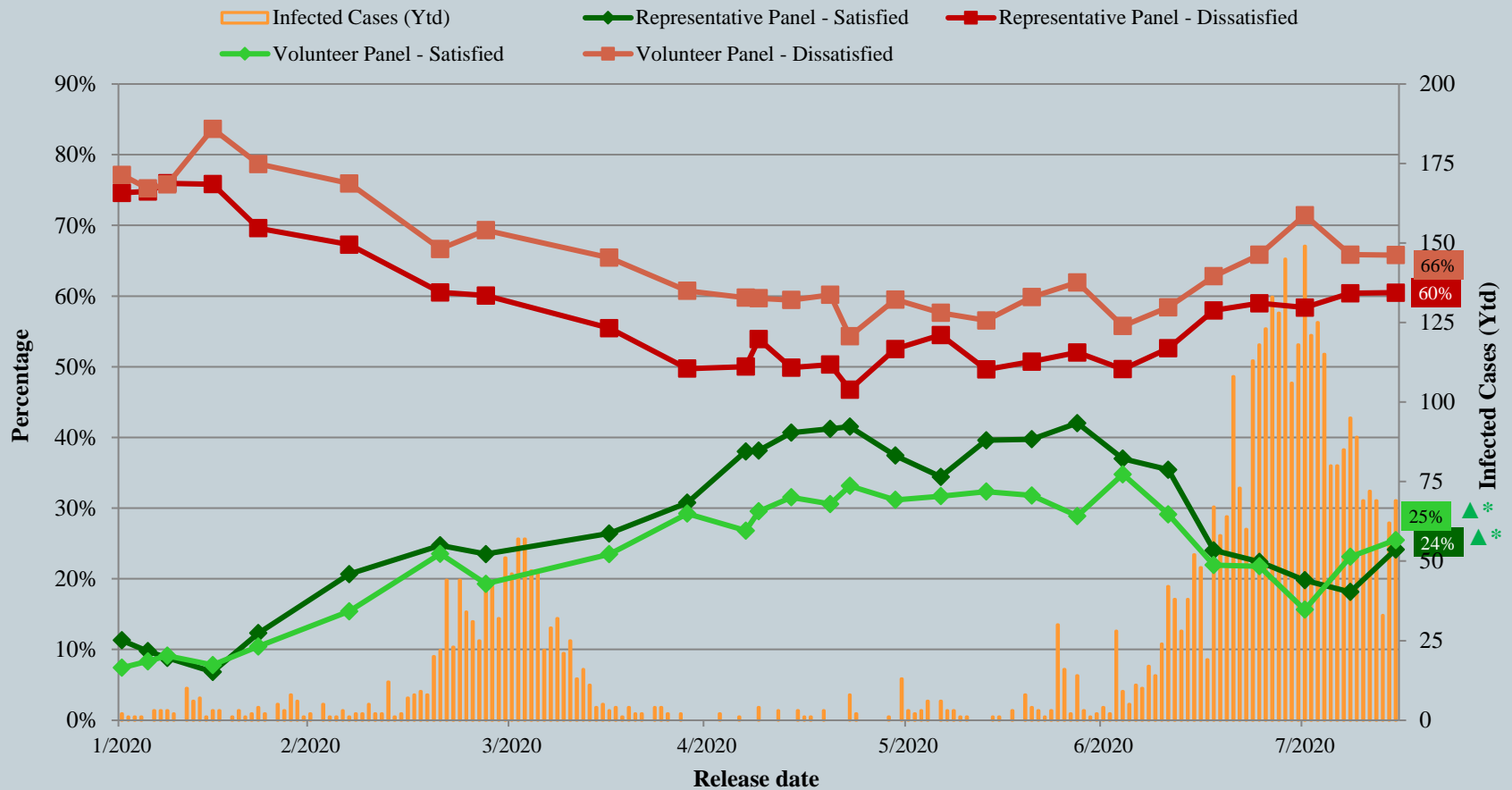
[†] The mean value is calculated by quantifying all individual responses into 1, 2, 3, 4, 5 marks according to their degree of positive level, where 1 is the lowest and 5 the highest, and then calculate the sample mean.

* Significant change

Survey Result - Community Health Module

6

Appraisal of HK Government's performance in handling novel coronavirus pneumonia



^ Answer options included: very much satisfied, somewhat satisfied, half-half, somewhat dissatisfied, very much dissatisfied and don't know / hard to say.

* Significant change

POP



HONG KONG PUBLIC OPINION PROGRAM

HONG KONG PUBLIC OPINION RESEARCH INSTITUTE

香港民意研究所 之 香港民意研究計劃

Community Democracy Project - Community Health Module

Post-Epidemic Normality Resumption Index (PENRI)

Latest Results

August 14, 2020

Contact Information - PENRI

8

	HKPOP Panel
Date of survey	August 3, 3pm – August 13, 3pm
Survey method	Online survey
Target population	Hong Kong residents aged 12+
Total sample size	8,760
Response rate	11.6%
Sampling error	Sampling error of percentages at +/-1% at 95% confidence level
Weighting method	The figures are rim-weighted according to 1) gender-age distribution of Hong Kong population and by District Councils population figures from Census and Statistics Department; 2) Voting results of District Councils Election from Registration and Electoral Office; 3) rating distribution of Chief Executive from regular tracking surveys.

Survey Result - PENRI

9

Date of Publication	29/7	30/7	31/7	1/8	2/8	3/8	4/8	5/8	6/8	7/8	8/8	9/8	10/8	11/8	12/8	13/8	14/8
Imported Cases(Ytd)	8	5	4	3	1	1	0	5	3	4	8	2	9	2	1	1	4
Local Infection Cases(Ytd)	98	113	145	118	124	114	80	75	82	91	81	67	63	67	32	61	65
Post-Epidemic Work Resumption Index (PEWRI)	1.9	1.9	2.0	2.2	2.2	2.1	2.1	6.8	6.9	6.8	6.6	6.6	6.6	6.6	7.1	6.9	7.0
Post-Epidemic Public-Facilities Re-open Index (PEPRI)	4.4	4.7	4.7	4.8	4.7	4.6	4.6	10.4	9.3	9.1	9.1	8.9	8.9	8.7	8.5	8.6	8.6
Post-Epidemic Gathering Resumption Index (PEGRI)	10.0	10.3	10.5	10.7	10.7	10.6	10.6	14.5	15.0	14.8	14.8	14.6	14.7	14.9	15.8	15.7	15.7
Post-Epidemic Business Resumption Index (PEBRI) (catering)	5.9	6.0	6.0	6.2	6.3	6.2	6.2	12.7	12.8	12.4	12.4	12.4	12.4	12.4	11.4	11.8	11.8

Survey Result - PENRI

10

