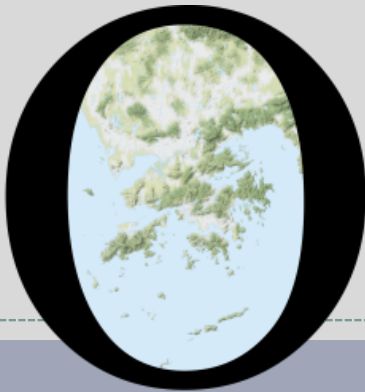


POP



HONG KONG PUBLIC OPINION PROGRAM

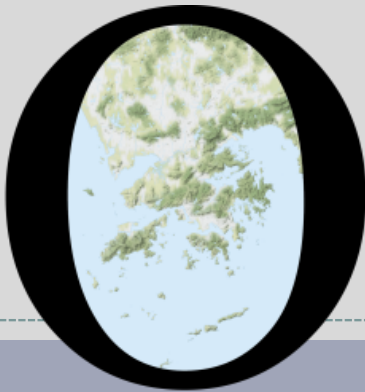
HONG KONG PUBLIC OPINION RESEARCH INSTITUTE

香港民意研究所 之 香港民意研究計劃

Latest Tracking Poll Results

August 10, 2021

POP



HONG KONG PUBLIC OPINION PROGRAM

HONG KONG PUBLIC OPINION RESEARCH INSTITUTE

香港民意研究所 之 香港民意研究計劃

Community Democracy Project -

Community Health Module

Latest Results

August 10, 2021

Contact Information - Community Health Module

3

	HKPOP Panel	
Date of survey	July 19, 3pm – August 9, 3pm	
Survey method	Online survey	
Target population	Hong Kong residents aged 12+	
	Representative Panel	Volunteer Panel
Total sample size	766	6,019
Response rate	8.6%	7.2%
Sampling error	Sampling error of percentages at +/-4% at 95% confidence level	Sampling error of percentages at +/-1% at 95% confidence level
Weighting method	The figures are rim-weighted according to 1) gender-age distribution of Hong Kong population and by District Councils population figures from Census and Statistics Department; 2) Voting results of District Councils Election from Registration and Electoral Office; 3) rating distribution of Chief Executive from regular tracking surveys.	

Survey Result - Community Health Module

4

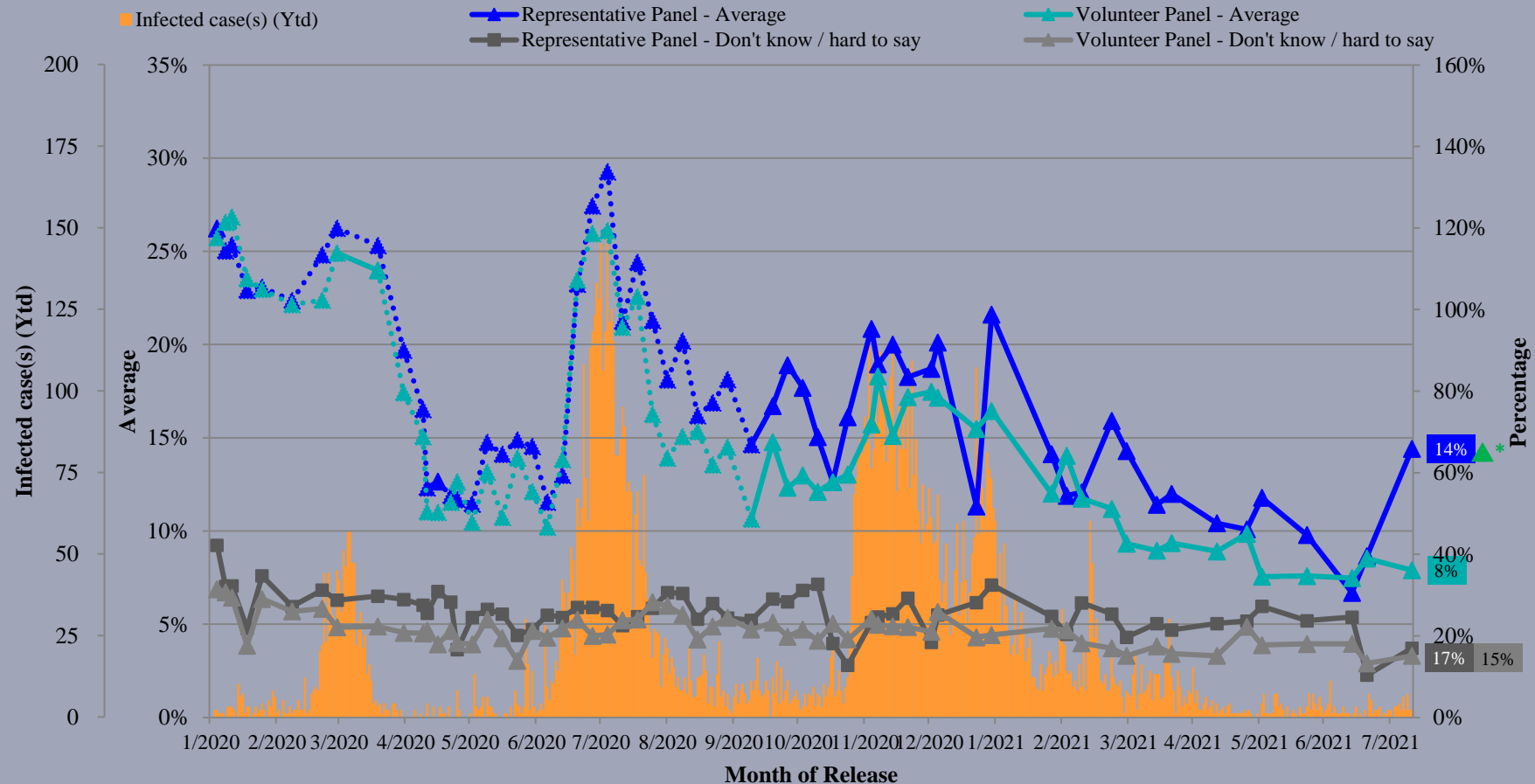
- **Latest survey period: 19/7-9/8/2021** (*Representative Panel N=763 Volunteer Panel N=6,007*)
- **Last survey period: 12-19/7/2021** (*Representative Panel N=519 Volunteer Panel N=5,201*)
- **Second last survey period: 21/6-12/7/2021** (*Representative Panel N=884 Volunteer Panel N=8,934*)

Opinion Question [^]		Representative Panel (N=763)		Volunteer Panel (N=6,007)	
		Don't know / hard to say	Average	Don't know / hard to say	Average
Q1 How likely do you think it is that you will contract novel coronavirus pneumonia over the next one month? [Logarithmic Scale]	Latest	17%	14% ▲*	15%	8%
	Last	10%	9%	13%	9%
	Second Last	25%	7%	18%	7%

[^] Answer options included: 0-10 rating scale, others and don't know / hard to say. Answer options changed from linear scale to logarithmic scale since Oct 2020. * Significant change

Survey Result - Community Health Module

Assessment of the public's expected chance of COVID-19 infection



^ Answer options included: 0-10 rating scale, others and don't know / hard to say. Answer options changed from linear scale to logarithmic scale since Oct 2020.

* Significant change

Survey Result - Community Health Module

6

- **Latest survey period: 19/7-9/8/2021** (Representative Panel N=762 Volunteer Panel N=5,986)
- **Last survey period: 12-19/7/2021** (Representative Panel N=518 Volunteer Panel N=5,208)
- **Second last survey period: 21/6-12/7/2021** (Representative Panel N=885 Volunteer Panel N=8,952)

Opinion Question [^]		Representative Panel (N=762)				Volunteer Panel (N=5,986)			
		Satisfied	Half-half	Dissatisfied	Mean [†]	Satisfied	Half-half	Dissatisfied	Mean [†]
Q2 How satisfied or dissatisfied are you with the government's performance in handling novel coronavirus pneumonia?	Latest	34%	18%	49%	2.6	31%	11% ▼*	58%	2.4
	Last	33%	21%	45%	2.6	30%	14%	56%	2.4
	Second Last	31%	18%	50%	2.5	28%	12%	60%	2.3

[^] Answer options included: very much satisfied, somewhat satisfied, half-half, somewhat dissatisfied, very much dissatisfied and don't know / hard to say

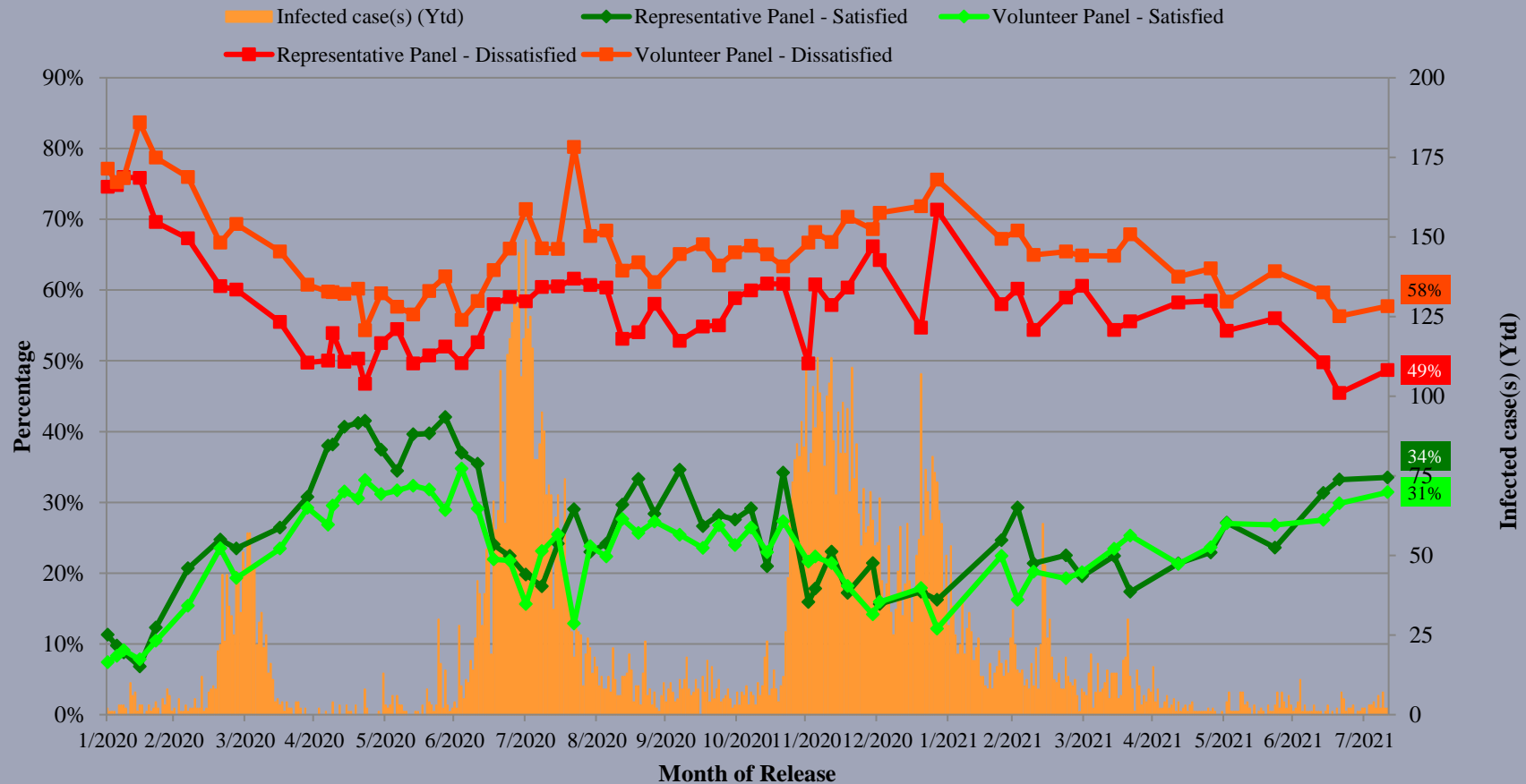
[†] The mean value is calculated by quantifying all individual responses into 1, 2, 3, 4, 5 marks according to their degree of positive level, where 1 is the lowest and 5 the highest, and then calculate the sample mean.

* Significant change

Survey Result - Community Health Module

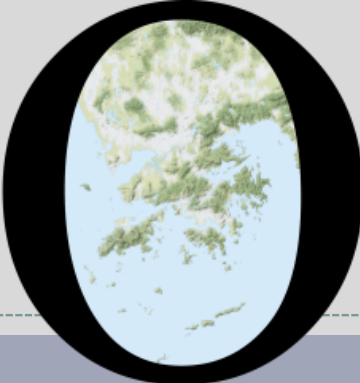
7

Appraisal of HK Government's performance in handling novel coronavirus pneumonia



^ Answer options included: very much satisfied, somewhat satisfied, half-half, somewhat dissatisfied, very much dissatisfied and don't know / hard to say

POP



HONG KONG PUBLIC OPINION PROGRAM

HONG KONG PUBLIC OPINION RESEARCH INSTITUTE

香港民意研究所 之 香港民意研究計劃

限聚指數

Group Gathering Prohibition Index

10/8/2021

樣本資料 - 限聚指數基準調查

Contact Information - Group Gathering Prohibition Index Benchmark Survey

9

	香港民研意見群組成員 HKPOP Panel
調查日期 Survey date	16/7 15:00 – 21/7 15:00
調查方法 Survey method	以電郵接觸群組成員，並於網上完成調查 Online survey
訪問對象 Target population	十二歲或以上的香港市民 Hong Kong residents aged 12+
總成功樣本 Total sample size	5,636
回應比率 Response rate	6.1%
抽樣誤差 Sampling error	95% 置信水平，百分比誤差 +/-1% Sampling error of percentages at +/-1% at 95% confidence level
加權方法 Weighting method	按照1) 政府統計處提供的全港人口年齡及性別分佈統計數字、各區議會人口數字； 2) 選舉事務處提供的區議會選舉結果；3) 常規調查中的特首評分分佈數字，以 「反覆多重加權法」作出調整。 The figures are rim-weighted according to 1) gender-age distribution of Hong Kong population and by District Councils population figures from Census and Statistics Department; 2) Voting results of District Councils Election from Registration and Electoral Office; 3) rating distribution of Chief Executive from regular tracking surveys.

限聚指數

Group Gathering Prohibition Index

10

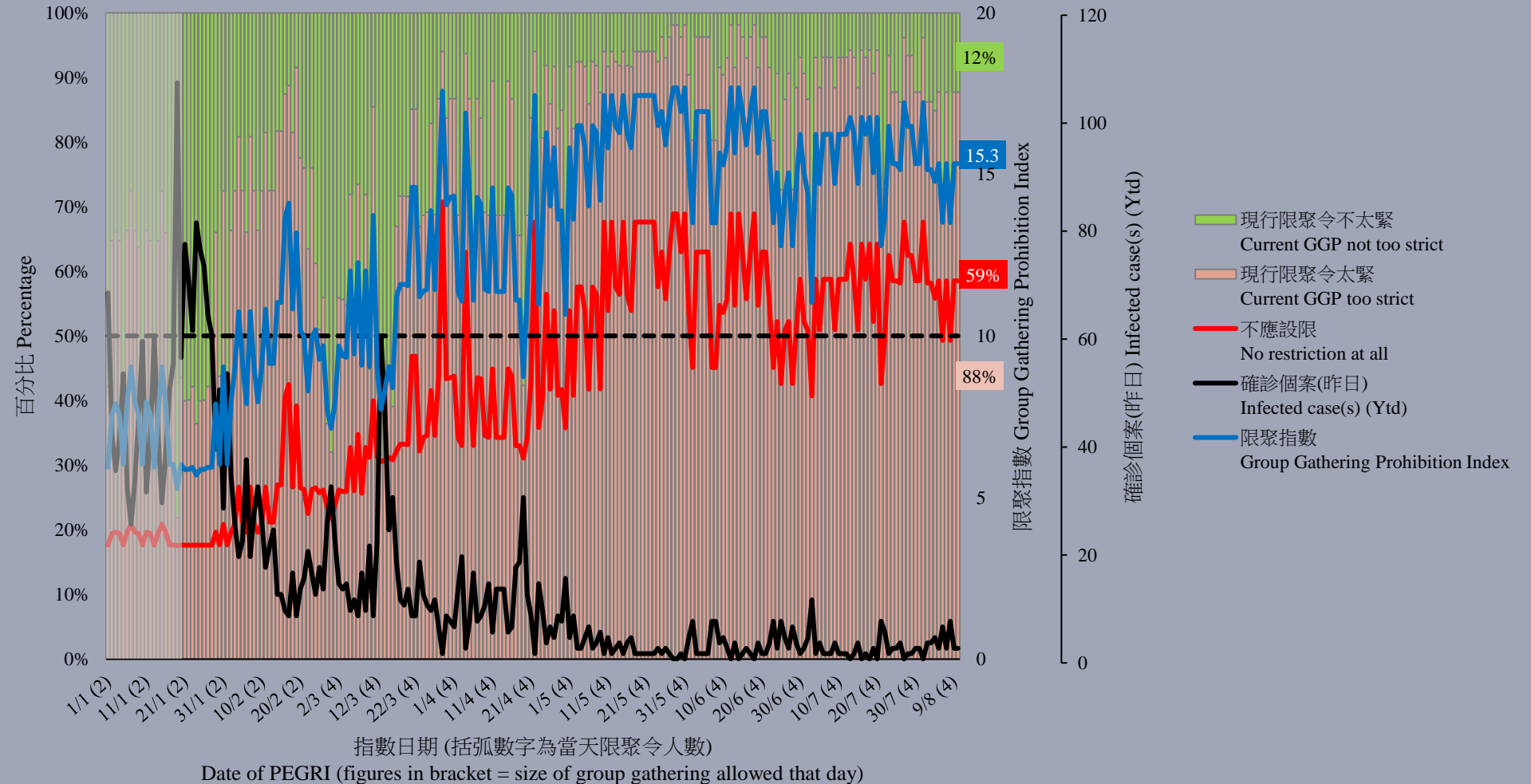
- **最新調查日期 Latest survey date: 16-21/7/2021 (N=5,636)**
- **上次調查日期 Last survey date: 18-23/6/2021 (N=6,158)**
- **上上次調查日期 Second last survey date: 17-24/5/2021 (N=6,583)**

意見題目	Opinion Questions
<p>你認為香港應否無條件全面撤銷「限聚令」？</p> <ul style="list-style-type: none">▪ 應該無條件撤銷「限聚令」▪ 不應該，應視乎疫情而定▪ 不知道／很難說 <p>[追問沒有選擇應該“無條件撤銷「限聚令」”者] 你認為每天新增確診個案數應是多少，才適合將「限聚令」訂於2人？ 你認為每天新增確診個案數應是多少，才適合將「限聚令」訂於4人？ 你認為每天新增確診個案數應是多少，才適合將「限聚令」訂於8人？ 你認為每天新增確診個案數應是多少，才適合將「限聚令」訂於16人？ 你認為感染個案清零多少天後，限聚令應該全面撤銷？</p> <p>請於以下欄位列舉你認為合適的 [個案數 及 限聚人數] 組合.....</p>	<p>Do you think the regulation prohibiting gatherings of more than a specific number of people in public places should be completely lifted unconditionally in Hong Kong?</p> <ul style="list-style-type: none">▪ Yes, the ban should be lifted unconditionally▪ No, it should depend on the epidemic situation▪ Don't know / hard to say <p>[For respondents NOT answering “Yes, the ban should be lifted unconditionally”] How many newly confirmed cases each day should there be before it would be appropriate to prohibit gatherings of more than 2 people? How many newly confirmed cases each day should there be before it would be appropriate to prohibit gatherings of more than 4 people? How many newly confirmed cases each day should there be before it would be appropriate to prohibit gatherings of more than 8 people? How many newly confirmed cases each day should there be before it would be appropriate to prohibit gatherings of more than 16 people? After how many days of zero infection do you think the group gathering ban should be lifted altogether?</p> <p>Please list combinations of [number of cases & number of people allowed in gatherings] that you think is appropriate in the field below:</p>

調查結果 - 限聚接受程度

Survey Result – Group Gathering Prohibition Acceptance Level

限聚接受程度 Group Gathering Prohibition Acceptance Level



Date of PEGRI (figures in bracket = size of group gathering allowed that day)

限聚指數 - 分析評論

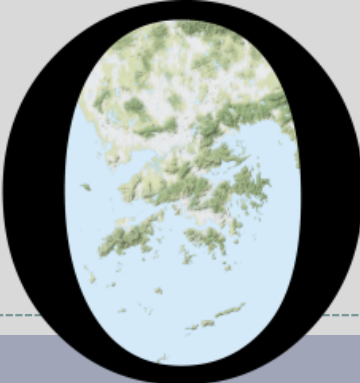
Group Gathering Prohibition Index – Commentary

12

獨立評論人潘麒智指出：「世界各地的疫苗似乎應對不了病毒的變種，疫情持續擴散。香港政府對疫情防控的對策已經變得僵化，認為現時並無條件大幅放寬社交距離措施，並謂第五波疫情隨時爆發，及預告會在8月內開始收緊B類餐飲處所員工的定期檢測規定，繼續將小商戶生計作賭注。長此下去，市民亦只能自求多福，每日戴好口罩，做好個人防護相信更勝政府安排。」

Independent commentator KC Poon observed, “Vaccines around the world seem unable to cope with the mutating virus, as the pandemic continues to spread. The Hong Kong government has become inflexible in its response to the pandemic, not ready to relax the social distancing measures significantly. It keeps saying that the fifth wave of pandemic outbreak will happen any time, and forecasts the tightening of the restrictions on Category B restaurants regarding virus tests for staffs in August, putting the livelihood of small business owners at stake. In the long run, people will have to rely on their own luck, to wear their own masks properly, and to rely on themselves more than on the government.”

POP



HONG KONG PUBLIC OPINION PROGRAM

HONG KONG PUBLIC OPINION RESEARCH INSTITUTE

香港民意研究所 之 香港民意研究計劃

Latest Tracking Poll Results

August 10, 2021

Contact Information

14

	Naming stage	Evaluation stage
Date of survey	30/6-8/7/2021	19-22/7/2021
Survey method	Random telephone survey conducted by real interviewers	
Target population	Cantonese-speaking Hong Kong residents aged 18 or above	
Sample size	1,003 (including 503 landline and 500 mobile samples)	1,000 (including 499 landline and 501 mobile samples)
Effective response	46.4%	48.5%
Sampling error	Sampling error of percentages not more than +/-4% and that of net values not more than +/-7% at 95% conf. level	
Weighting method	Rim-weighted according to figures provided by the Census and Statistics Department. The gender-age distribution of the Hong Kong population came from “Mid-year population for 2020”, while the educational attainment (highest level attended) distribution and economic activity status distribution came from “Women and Men in Hong Kong - Key Statistics (2020 Edition)”.	

Survey Topic

15

- People's feelings towards different peoples and governments

Survey Result - People's feelings towards different peoples and governments

• Net affinity towards different peoples and governments

		18-22/1/2021	19-22/7/2021	Change	Record
Hong Kong	People	34%	41%	▲6%	Record high since Aug. 2020
	Government	-34%	-20%	▲13% *	Record high since Jul. 2018
Mainland China	People	14%	20%	▲7%	Record high since May 2009
	Government	-9%	-2%	▲7%	Record high since Jun. 2015
Taiwan	People	50%	48%	▼2%	Record low since Dec. 2011
	Government	20%	8%	▼12% *	Record low since Aug. 2017
Macau	People	48%	48%	▲1%	Record high since Jul. 2019
	Government	46%	31%	▼14% *	Record low since Aug. 2020

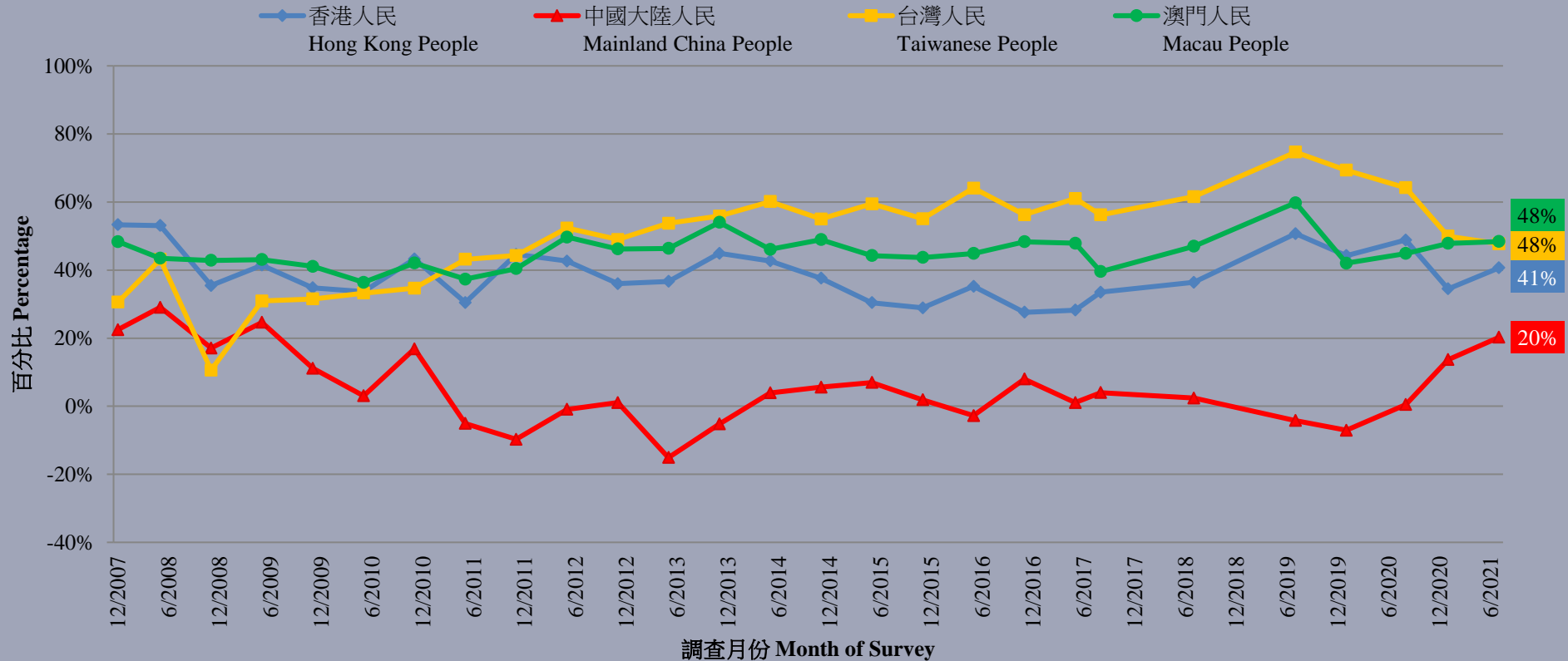
- Our latest survey shows that, in terms of net affinity, Hong Kong people feel more positively about all other peoples than their governments. Among them, the net affinity for the governments of Hong Kong, the United States and Mainland China are negative. Looking back at past records, the net affinity of Hong Kong people towards the people and government of Mainland China are at historical **highs** since 2009 and 2015 respectively, while that towards the people and government of Taiwan are at historical **lows** since 2011 and 2017 respectively.

* Significant change

Survey Result - People's feelings towards different peoples and governments

17

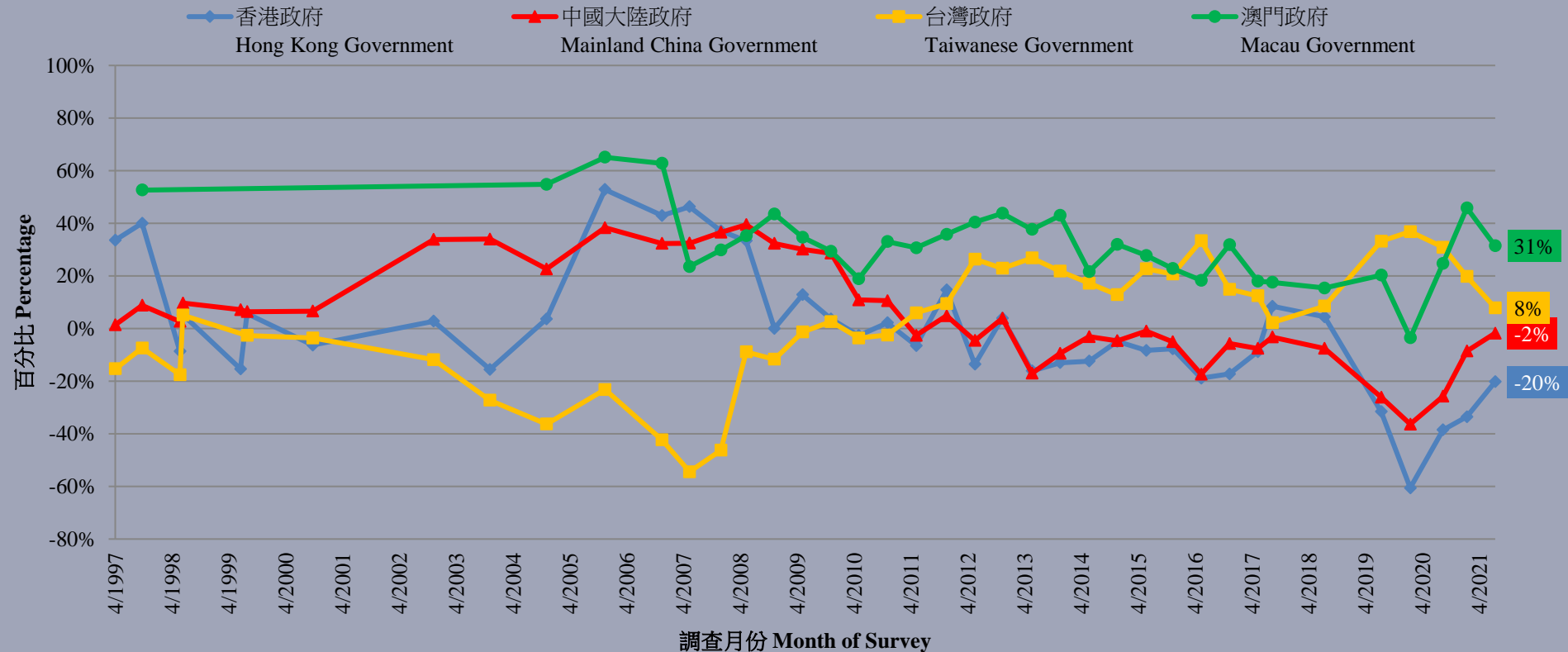
市民對各地人民好感淨值 - 綜合圖表 (按次計算)
People's feeling towards different People - Net Value Combined Charts (Per Poll)
(12/2007 - 7/2021)



Survey Result - People's feelings towards different peoples and governments

18

市民對各地政府好感淨值 - 綜合圖表 (按次計算)
People's feeling towards different Governments – Net Value Combined Charts (Per Poll)
(4/1997 – 7/2021)



- Compared to half a year ago, the net affinity of Hong Kong people towards the government of Hong Kong has increased significantly, while that towards the governments of Taiwan and Macau have decreased significantly.

Survey Result - People's feelings towards different peoples and governments

19

• Net affinity towards different peoples and governments

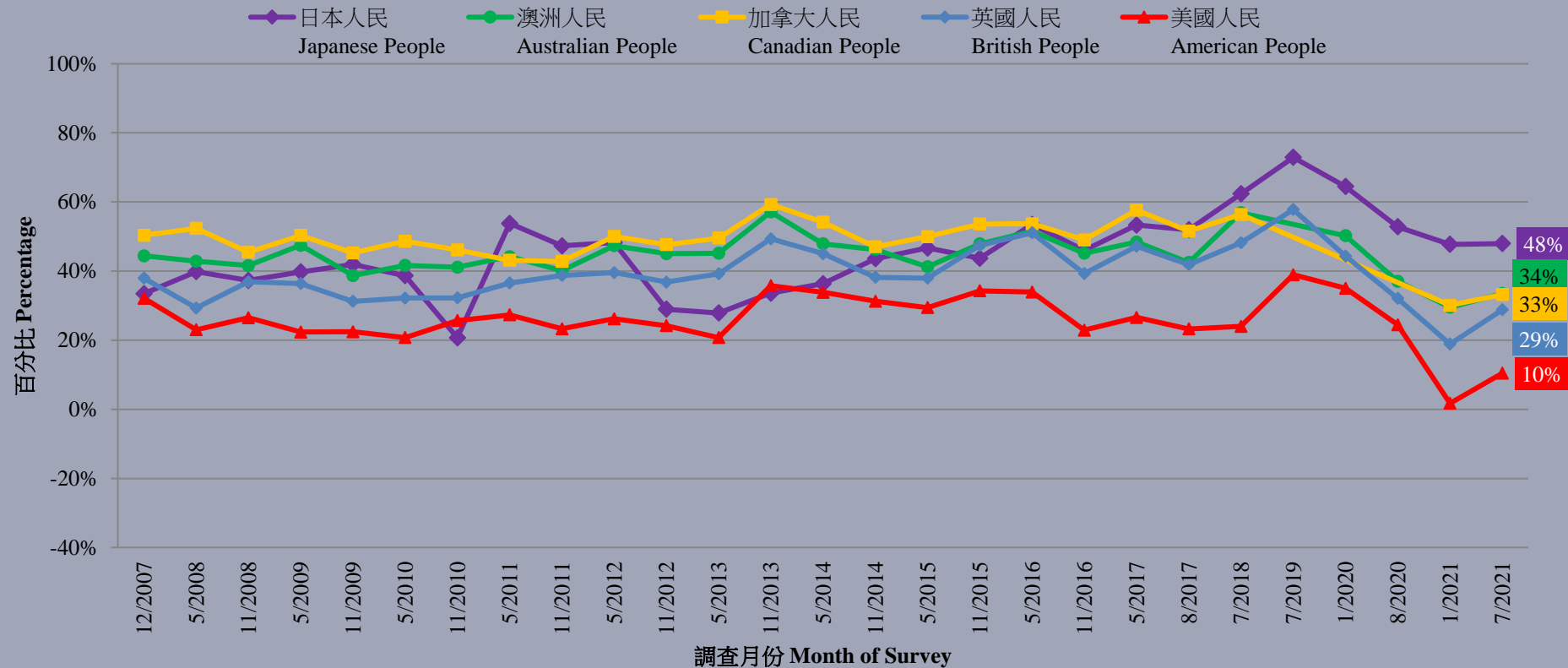
		18-22/1/2021	19-22/7/2021	Change	Record
Japan	People	48%	48%	--	--
	Government	16%	8%	▼7% *	Record low since Jul. 2018
Australia	People	30%	34%	▲4%	Record high since Aug. 2020
	Government	15%	16%	▲1%	Record high since Aug. 2020
Canada	People	30%	33%	▲3%	Record high since Jul. 2018
	Government	11%	14%	▲4%	Record high since Jul. 2018
United Kingdom	People	19%	29%	▲10% *	Record high since Aug. 2020
	Government	-3%	12%	▲16% *	Record high since Jan. 2020
United States	People	2%	10%	▲9% *	Record high since Aug. 2020
	Government	-30%	-20%	▲10% *	Record high since Aug. 2020

* Significant change

Survey Result - People's feelings towards different peoples and governments

20

市民對各地人民好感淨值 - 綜合圖表 (按次計算)
People's feeling towards different People - Net Value Combined Charts (Per Poll)
(12/2007 - 7/2021)

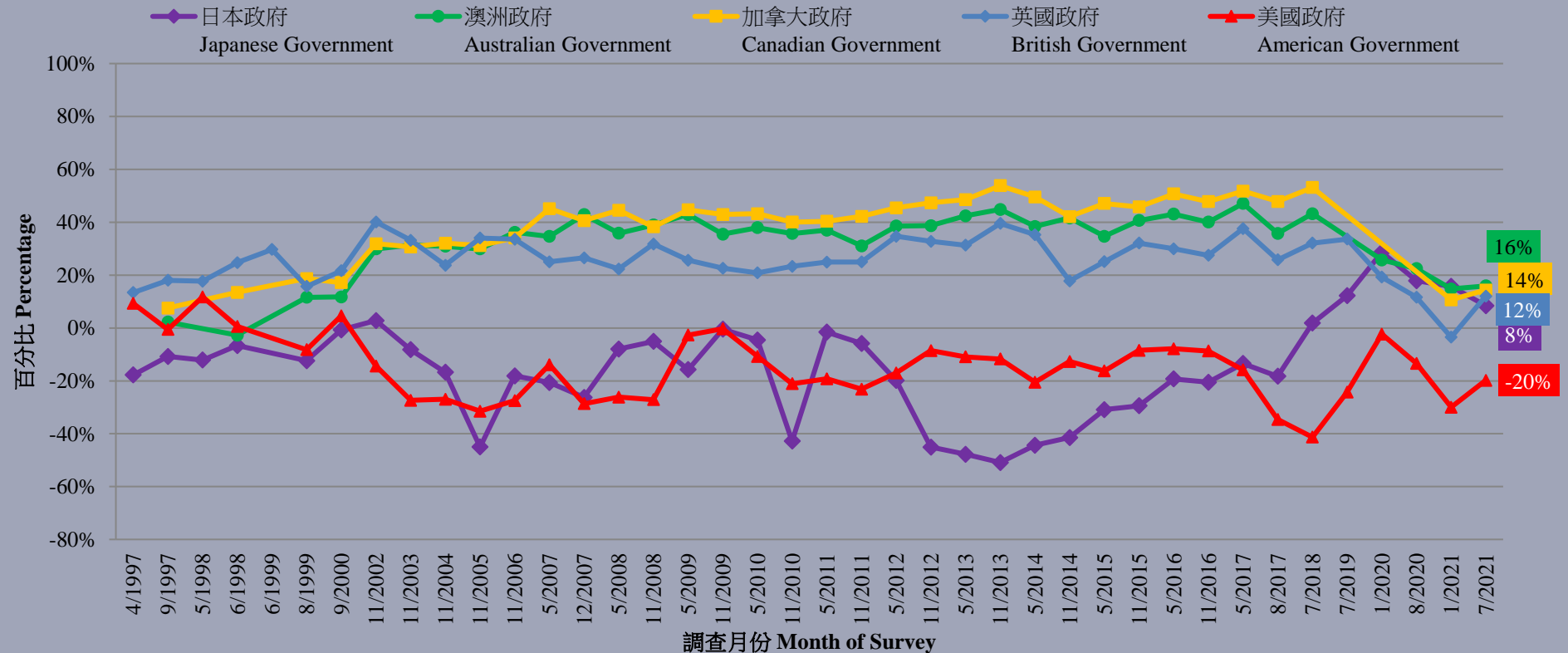


- Compared to half a year ago, the net affinity of Hong Kong people towards the peoples of the United Kingdom and the United States have increased significantly.

Survey Result - People's feelings towards different peoples and governments

21

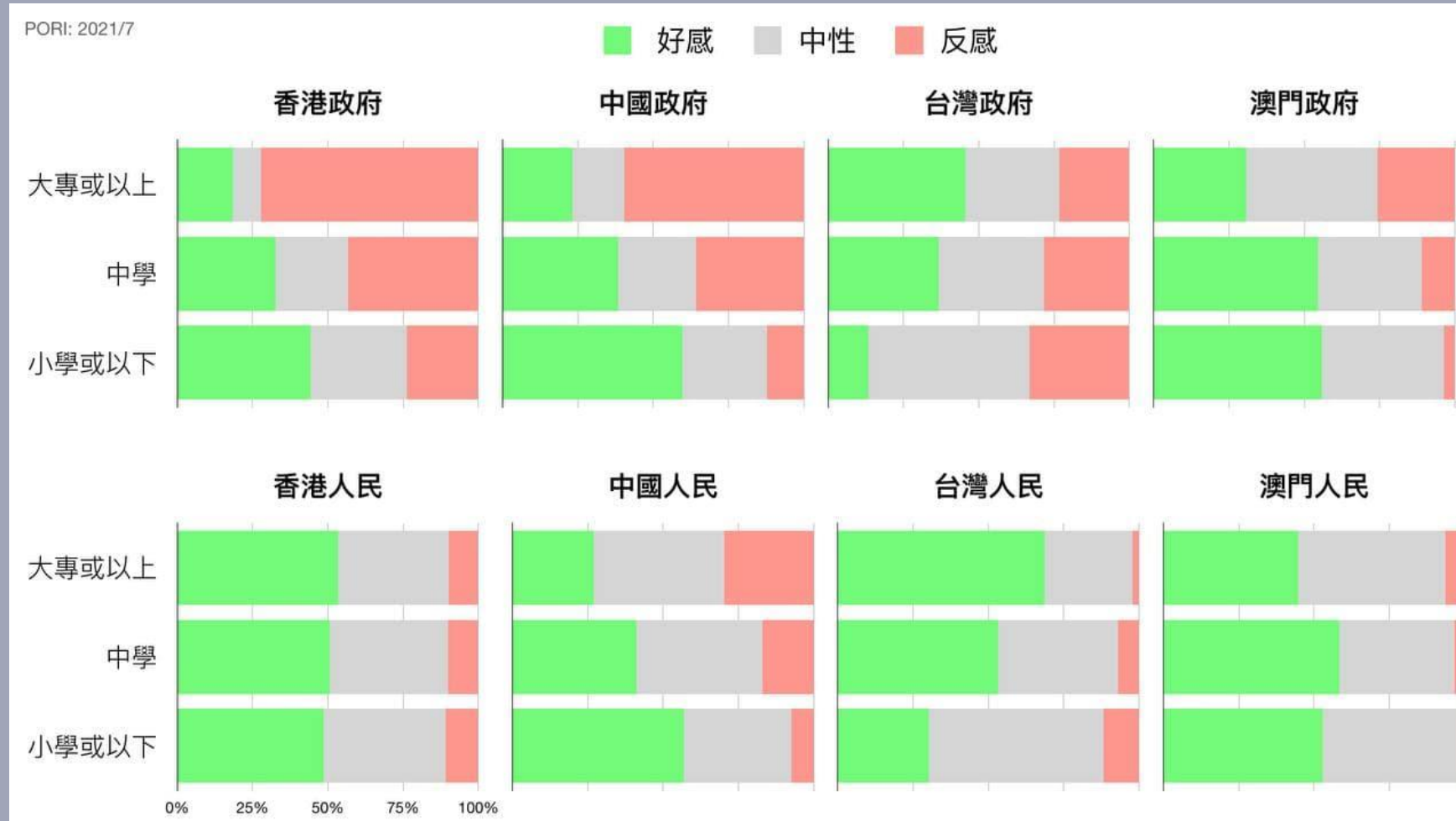
市民對各地政府好感淨值 - 綜合圖表 (按次計算)
 People's feeling towards different Governments – Net Value Combined Charts (Per Poll)
 (4/1997 – 7/2021)



- Compared to half a year ago, the net affinity of Hong Kong people towards the governments of the United Kingdom and the United States have increased significantly, while that towards the government of Japan has decreased significantly.

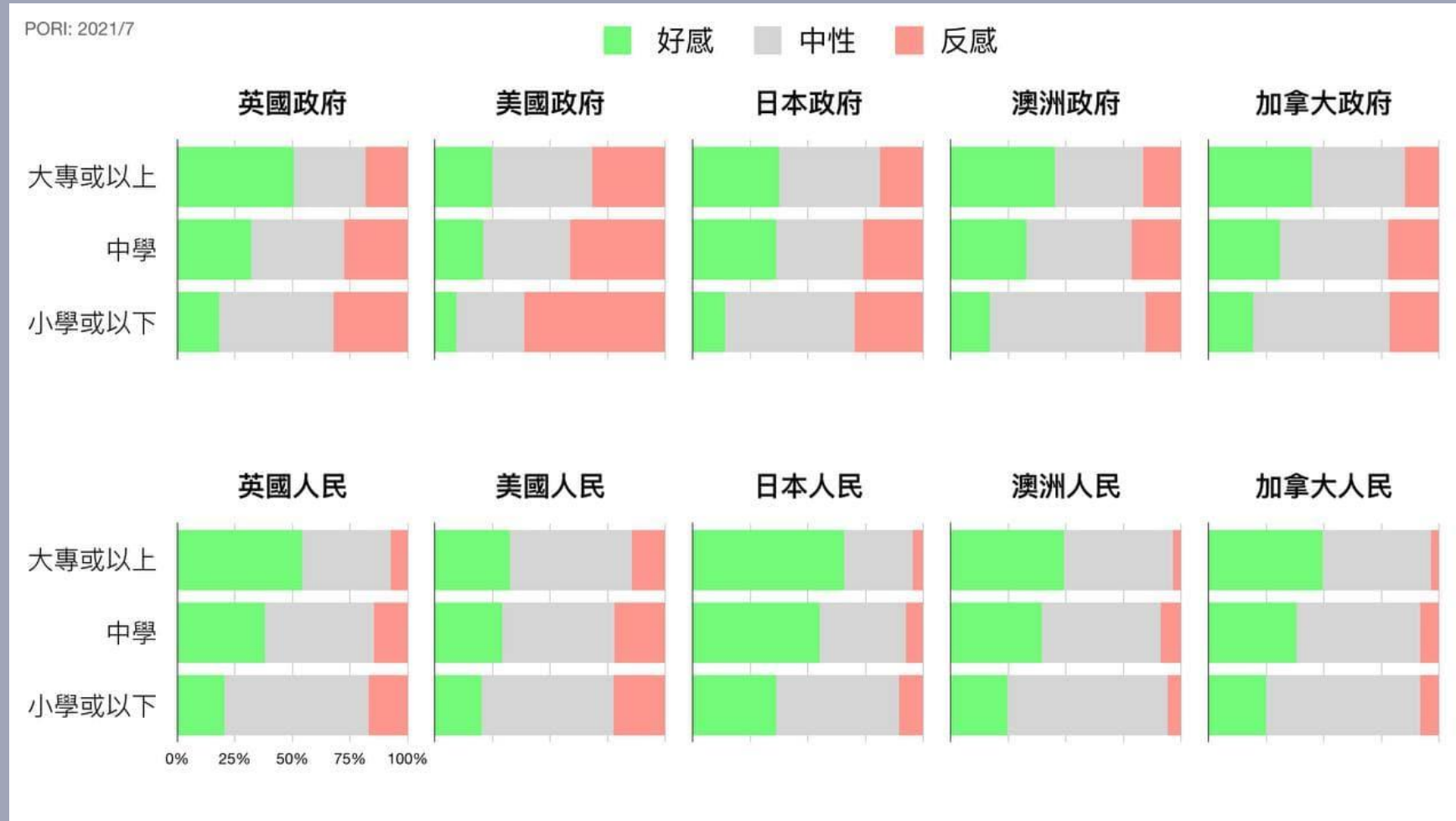
Survey Result - People's feelings towards different peoples and governments

23



Survey Result - People's feelings towards different peoples and governments

24



Survey Result - People's feelings towards different peoples and governments

25

PORI: 2021/7

