



HONG KONG PUBLIC OPINION RESEARCH INSTITUTE

香港民意研究所

Hong Kong Public Opinion Program of Hong Kong Public Opinion Research Institute

**PopPanel Research Report No. 88 cum
Community Democracy Project Research Report No. 65
cum Community Health Project Research Report No. 61**

Survey Date: 21 June to 12 July 2021

Release Date: 13 July 2021

Copyright of this report was generated by the Hong Kong Public Opinion Program (HKPOP) and opened to the world.

HKPOP proactively promotes open data, open technology and the free flow of ideas, knowledge and information.

The predecessor of HKPOP was the Public Opinion Programme at The University of Hong Kong (HKUPOP).

“POP” in this publication may refer to HKPOP or HKUPOP as the case may be.

Part 1: Community Democracy Project: Community Health Module

Research Background

Initiated by the Hong Kong Public Opinion Research Institute (HKPORI), the “Community Integration through Cooperation and Democracy, CICD” Project (or the “Community Democracy Project”) aims to provide a means for Hongkongers to re-integrate ourselves through mutual respect, rational deliberations, civilized discussions, personal empathy, social integration, and when needed, resolution of conflicts through democratic means. It is the rebuilding of our Hong Kong society starting from the community level following the spirit of science and democracy. For details, please visit: <https://www.pori.hk/cicd>.

The surveys of Community Democracy (CD) Project officially started on 3 January 2020, targeting members of “HKPOP Panel” established by HKPORI in July 2019, including “Hong Kong People Representative Panel” (Probability-based Panel) and “Hong Kong People Volunteer Panel” (Non-probability-based Panel). This report also represents Report No. 88 under HKPOP Panel survey series, as well as Report No. 65 under the CD Project survey series. Since CD Project aims to gauge the opinions of members in different communities, HKPORI needs to continuously recruit new panel members and map their profile with their respective constituency areas to form “HKPOP Community Panel” including “Community Representative Panel” and “Community Volunteer Panel” first, and then conduct the research.

In view of the outbreak of Novel Coronavirus (also known as “Wuhan Pneumonia”) in late January 2020, HKPOP kick-started the “Community Democracy Project: Community Health Module” or “Community Health Project” using a PopPanel survey design to study the public’s views on the epidemic and the Government’s relevant policies using small communities such as housing estates as the unit of analysis. The survey covers people’s views on their perceived chance of contracting pneumonia, appraisal on the government’s handling of the disease, impacts of the border closure, calls for strike by frontline medical staff, community outbreak, work-from-home arrangement, immigration controls, general use of face masks as well as the government’s implementation of relevant policies. This is the Report No. 61 under the Community Health Project survey series. The special feature of the Community Health Project is the lowering of respondents’ age bracket to 12 years old, in order to obtain more comprehensive samples.

HKPOP sent out emails to all panel members at the beginning of the survey, inviting them to fill in the questionnaire at the designated online platform. Members were allowed to make repeated submissions, while only the last submission of each individual member would be used for analysis.

Contact Information

Herewith the contact information of the “Community Health survey”:

Table 1: Detailed Contact Information

| | | |
|-------------------------------|--|--|
| Survey method | Online survey | |
| Target population | HKPOP Panel samples, namely Hong Kong People Representative Panel (Probability-based Panel) and Hong Kong People Volunteer Panel (Non-probability-based Panel) | |
| Weighting method | The figures are rim-weighted according to 1) gender-age distribution of Hong Kong population and by District Councils population figures from Census and Statistics Department; 2) Voting results of District Councils Election from Registration and Electoral Office; 3) rating distribution of Chief Executive from regular tracking surveys. | |
| Date of survey | June 21, 3pm – July 12, 3pm | |
| Total sample size | Probability-based Panel: 888 | Non-probability-based Panel: 8,959 |
| Response rate | Probability-based Panel: 11.0% | Non-probability-based Panel: 10.7% |
| Sampling error ^[1] | Sampling error of percentages at +/-3% at 95% confidence level | Sampling error of percentages at +/-1% at 95% confidence level |

[1] All error figures in this release are calculated at 95% confidence level. “95% confidence level” means that if we were to repeat a certain survey 100 times with different random samples, we would expect 95 times having the population parameter within the respective error margins calculated. Because of sampling errors, when quoting percentages, journalists should refrain from reporting decimal places, whereas one decimal place can be used when quoting rating figures.

PopPanel Composition

Regarding data collection, survey data from both the Hong Kong People Representative Panel and Hong Kong People Volunteer Panel were collected in the form of online questionnaire.

Among them, the Hong Kong People Representative Panel comes from members of the “HKPOP Panel” recruited in regular random telephone surveys. HKPOP uses “HKPOP Panel” as a framework for conducting surveys for different research projects, any eligible family member in the household may be invited to participate in a specific research.

Meanwhile, members of the Hong Kong People Volunteer Panel are recruited online. Citizens only need to self-register in HKPORI website to participate in online questionnaires.

All panel data collected will be adjusted using rim-weighting, to minimize the effects of self-selection bias or participation bias. Details are documented in the Weighting Procedure section.

Response Rate

HKPOP adopts a set of contact definition in compliance with most international standards. Historically, the social research community in Hong Kong has developed its own set of contact rates, cooperation rates, response rates, and so on. HKPOP normally reports the “success rate” for online surveys.

The calculation of the success rates in this study refers to the following tables.

Table 2: Calculation of success rate of the Hong Kong People Representative Panel (by HKPOP definition)

| | |
|--------------|---|
| Success rate | |
| = | $\frac{\text{Successful cases}}{\text{Panel size of the Hong Kong People Representative Panel}} \times 100.0\%$ |
| = | $\frac{888}{8,071} \times 100.0\%$ |
| = | 11.0% |

Table 3: Calculation of success rate of the Hong Kong People Volunteer Panel (by HKPOP definition)

| | |
|--------------|--|
| Success rate | |
| = | $\frac{\text{Successful cases}}{\text{Panel size of the Hong Kong People Volunteer Panel}} \times 100.0\%$ |
| = | $\frac{8,959}{83,964} \times 100.0\%$ |
| = | 10.7% |

Weighting Procedure

HKPOP has continuously adopted and enhanced its weighting method over the past few decades. For this survey, HKPOP adopts a “2 by 5 by 18 by 3 by 13” weighting procedure involving five variables, namely, gender, age, district (18 cells), voting record (3 cells) and rating of Chief Executive (13 cells). Basically, the raw data of practically all random telephone surveys conducted by HKPOP are rim-weighted by the figures obtained from the Hong Kong Census and Statistics Department and/or Registration and Electoral Office so that the marginal distribution of the sample in terms of gender and age would match with that of the general population figures from the Hong Kong Census and Statistics Department. The marginal distribution of the sample in terms of district and voting record would match that of the general population figures from the Hong Kong Census and Statistics Department and/or Registration and Electoral Office. The marginal distribution of the sample in terms of “rating of Chief Executive” would match that of the general population in HKPOP’s regular tracking surveys. This rim-weighting method (sometimes called raking) is found to be the most practicable method in processing HKPOP’s survey data.

Specifically, the gender and age groupings used for weighting are as follows:

- Male 12-29
- Male 30-39
- Male 40-49
- Male 50-59
- Male 60 or above
- Female 12-29
- Female 30-39
- Female 40-49
- Female 50-59
- Female 60 or above

The districts used for weighting are as follows:

- Central and Western
- Wan Chai
- Eastern
- Southern
- Yau Tsim Mong
- Sham Shui Po
- Kowloon City
- Wong Tai Sin
- Kwun Tong
- Tsuen Wan
- Tuen Mun
- Yuen Long
- North
- Tai Po
- Sai Kung
- Sha Tin
- Kwai Tsing
- Islands

The voting records used for weighting are as follows:

- Candidates of pro-democracy camp
- Candidates of non-pro-democracy camp
- Did not vote / blank/void vote

The “rating of Chief Executive” groupings used for weighting are as follows:

- 0 mark
- 1-9 mark(s)
- 10-19 marks
- 20-29 marks
- 30-39 marks
- 40-49 marks
- 50 marks
- 51-60 marks
- 61-70 marks
- 71-80 marks
- 81-90 marks
- 91-99 marks
- 100 marks

Quantitative Analysis Results

Quantitative analysis results of the “Community Health survey”, after applying the standard weighting procedures, are as follows:

Table 4: Q1 Survey results, by panel type; Survey period: 21/6-12/7/2021

| Opinion Question ^[2] | Hong Kong People Representative Panel (Base=884) | | | Hong Kong People Volunteer Panel (Base=8,934) | | |
|---|---|----------------|-------------------|--|----------------|---------|
| | Don't know / hard to say | Try to predict | Average | Don't know / hard to say | Try to predict | Average |
| Q1 What do you think is your chance of being infected with novel coronavirus pneumonia , also known as Wuhan pneumonia, in the coming one month? [Logarithmic Scale] | 25% | 75% | 7% ^[3] | 18% | 82% | 7% |

[2] Answer options included: 0-10 rating scale, others and don't know / hard to say. Answer options changed from linear scale to logarithmic scale since Oct 2020. Questions asked remain unchanged while options of lower probability are further broken down and increase gradually in logarithmic scale.

[3] The difference between the figure and the result from the previous survey has gone beyond the sampling error at 95% confidence level, meaning that the change is statistically significant prima facie. However, whether the difference is statistically significant is not the same as whether they are practically useful or meaningful, and different weighting methods could have been applied in different surveys.

Chart 1: Q1 Combined Chart, by panel type

Assessment of the public's expected chance of COVID-19 infection

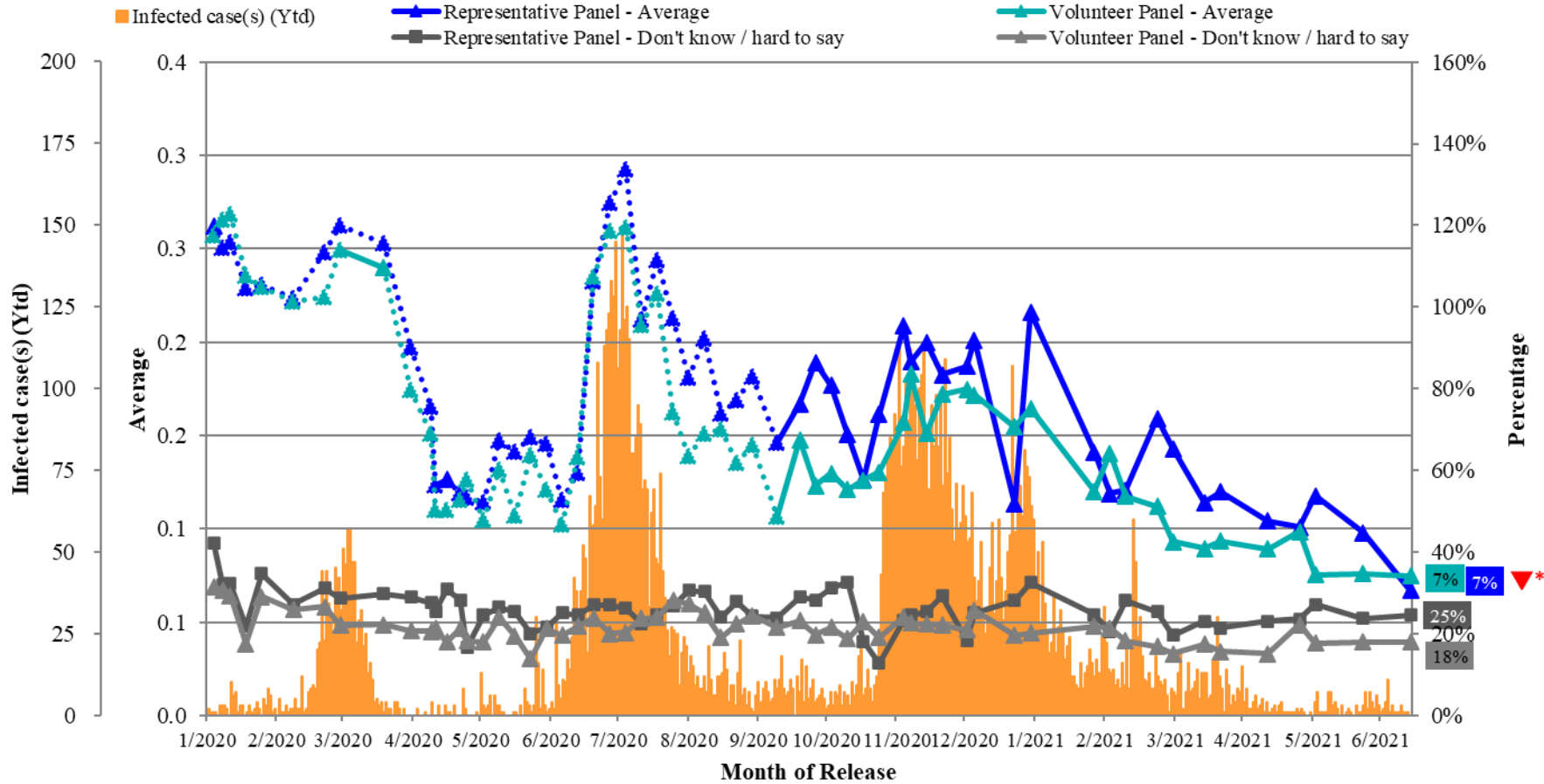


Table 5: Q2 Survey results, by panel type; Survey period: 21/6-12/7/2021

| Opinion Question ^[4] | Hong Kong People Representative Panel (Base=885) | | | | Hong Kong People Volunteer Panel (Base=8,952) | | | |
|--|--|-----------|---------------------------|---------------------|---|--------------------|---------------------------|---------------------|
| | Satisfied | Half-half | Dissatisfied | Mean ^[5] | Satisfied | Half-half | Dissatisfied | Mean ^[5] |
| Q2 How satisfied or dissatisfied are you with the government's performance in handling novel coronavirus pneumonia? | 31% ^[6] | 18% | 50% ^[6] | 2.5 ^[6] | 28% | 12% ^[6] | 60% ^[6] | 2.3 ^[6] |

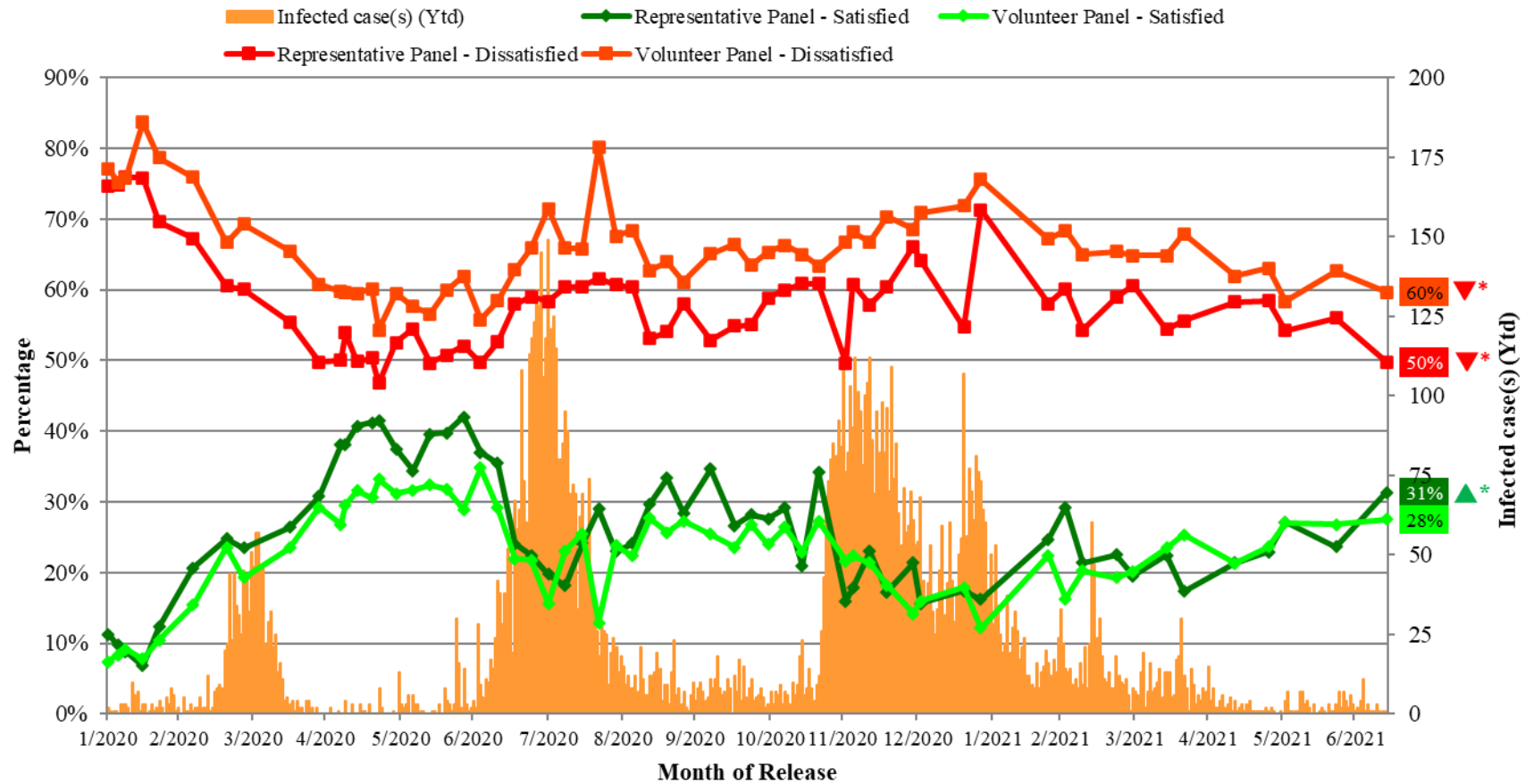
[4] Answer options included: very much satisfied, somewhat satisfied, half-half, somewhat dissatisfied, very much dissatisfied and don't know / hard to say.

[5] The mean value is calculated by quantifying all individual responses into 1, 2, 3, 4, 5 marks according to their degree of positive level, where 1 is the lowest and 5 the highest, and then calculate the sample mean.

[6] The difference between the figure and the result from the previous survey has gone beyond the sampling error at 95% confidence level, meaning that the change is statistically significant prima facie. However, whether the difference is statistically significant is not the same as whether they are practically useful or meaningful, and different weighting methods could have been applied in different surveys.

Chart 2: Q2 Combined Chart, by panel type

Appraisal of HK Government's performance in handling novel coronavirus pneumonia



Appendices

Appendix 1: Demographic profile of respondents

| Gender: | Hong Kong People Representative Panel | | | | Hong Kong People Volunteer Panel | | | |
|-----------------|---------------------------------------|--------|-----------------|--------|----------------------------------|--------|-----------------|--------|
| | Raw sample | | Weighted sample | | Raw sample | | Weighted sample | |
| | Freq | % | Freq | % | Freq | % | Freq | % |
| Male | 574 | 64.6% | 420 | 47.3% | 4,723 | 52.7% | 4,252 | 47.5% |
| Female | 314 | 35.4% | 468 | 52.7% | 4,209 | 47.0% | 4,694 | 52.5% |
| Other | 0 | 0.0% | 0 | 0.0% | 22 | 0.2% | 3 | <0.1% |
| Total | 888 | 100.0% | 888 | 100.0% | 8,954 | 100.0% | 8,949 | 100.0% |
| Missing case(s) | 0 | | 0 | | 5 | | 10 | |

| Age: | Hong Kong People Representative Panel | | | | Hong Kong People Volunteer Panel | | | |
|-----------------|---------------------------------------|--------|-----------------|--------|----------------------------------|--------|-----------------|--------|
| | Raw sample | | Weighted sample | | Raw sample | | Weighted sample | |
| | Freq | % | Freq | % | Freq | % | Freq | % |
| 12 - 29 | 92 | 10.4% | 176 | 19.8% | 1,357 | 15.2% | 1,757 | 19.8% |
| 30 - 39 | 176 | 19.8% | 138 | 15.5% | 2,175 | 24.4% | 1,377 | 15.5% |
| 40 - 49 | 189 | 21.3% | 145 | 16.3% | 2,276 | 25.6% | 1,448 | 16.3% |
| 50 - 59 | 213 | 24.0% | 161 | 18.2% | 2,026 | 22.8% | 1,613 | 18.2% |
| 60 or above | 218 | 24.5% | 269 | 30.3% | 1,071 | 12.0% | 2,689 | 30.3% |
| Total | 888 | 100.0% | 888 | 100.0% | 8,905 | 100.0% | 8,884 | 100.0% |
| Missing case(s) | 0 | | 0 | | 54 | | 75 | |

| Education attainment: | Hong Kong People Representative Panel | | | | Hong Kong People Volunteer Panel | | | |
|-----------------------|---------------------------------------|--------|-----------------|--------|----------------------------------|--------|-----------------|--------|
| | Raw sample | | Weighted sample | | Raw sample | | Weighted sample | |
| | Freq | % | Freq | % | Freq | % | Freq | % |
| Primary or below | 5 | 0.6% | 13 | 1.5% | 16 | 0.2% | 64 | 0.8% |
| Secondary | 233 | 26.7% | 235 | 27.2% | 1,336 | 15.6% | 1,450 | 17.9% |
| Tertiary or above | 635 | 72.7% | 619 | 71.4% | 7,192 | 84.2% | 6,591 | 81.3% |
| Total | 873 | 100.0% | 867 | 100.0% | 8,544 | 100.0% | 8,105 | 100.0% |
| Missing case(s) | 15 | | 21 | | 415 | | 854 | |

| Occupation: | Hong Kong People Representative Panel | | | | Hong Kong People Volunteer Panel | | | |
|----------------------------------|---------------------------------------|--------|-----------------|--------|----------------------------------|--------|-----------------|--------|
| | Raw sample | | Weighted sample | | Raw sample | | Weighted sample | |
| | Freq | % | Freq | % | Freq | % | Freq | % |
| Administrators and professionals | 288 | 32.9% | 248 | 28.7% | 3,436 | 40.3% | 2,432 | 30.1% |
| Clerks and service workers | 220 | 25.1% | 241 | 27.8% | 2,299 | 27.0% | 1,586 | 19.7% |
| Workers | 33 | 3.8% | 26 | 3.0% | 183 | 2.1% | 152 | 1.9% |
| Students | 16 | 1.8% | 20 | 2.3% | 361 | 4.2% | 925 | 11.5% |
| Home-makers / housewives | 49 | 5.6% | 66 | 7.6% | 399 | 4.7% | 410 | 5.1% |
| Others | 269 | 30.7% | 265 | 30.6% | 1,851 | 21.7% | 2,565 | 31.8% |
| Total | 875 | 100.0% | 866 | 100.0% | 8,529 | 100.0% | 8,070 | 100.0% |
| Missing case(s) | 13 | | 22 | | 430 | | 889 | |

| District: | Hong Kong People Representative Panel | | | | Hong Kong People Volunteer Panel | | | |
|-------------------|---------------------------------------|--------|-----------------|--------|----------------------------------|--------|-----------------|--------|
| | Raw sample | | Weighted sample | | Raw sample | | Weighted sample | |
| | Freq | % | Freq | % | Freq | % | Freq | % |
| Central & Western | 28 | 3.6% | 25 | 3.2% | 339 | 3.9% | 288 | 3.3% |
| Wan Chai | 15 | 1.9% | 19 | 2.4% | 222 | 2.5% | 215 | 2.4% |
| Eastern | 80 | 10.3% | 57 | 7.3% | 834 | 9.5% | 646 | 7.3% |
| Southern | 29 | 3.7% | 27 | 3.5% | 355 | 4.0% | 312 | 3.6% |
| Yau Tsim Mong | 31 | 4.0% | 34 | 4.4% | 371 | 4.2% | 388 | 4.4% |
| Sham Shui Po | 35 | 4.5% | 45 | 5.8% | 475 | 5.4% | 486 | 5.5% |
| Kowloon City | 50 | 6.4% | 44 | 5.7% | 466 | 5.3% | 495 | 5.6% |
| Wong Tai Sin | 35 | 4.5% | 44 | 5.6% | 449 | 5.1% | 497 | 5.7% |
| Kwun Tong | 62 | 8.0% | 72 | 9.2% | 650 | 7.4% | 817 | 9.3% |
| Tsuen Wan | 37 | 4.7% | 33 | 4.2% | 444 | 5.0% | 368 | 4.2% |
| Tuen Mun | 47 | 6.0% | 52 | 6.7% | 518 | 5.9% | 585 | 6.7% |
| Yuen Long | 63 | 8.1% | 67 | 8.6% | 597 | 6.8% | 783 | 8.9% |
| North | 23 | 3.0% | 33 | 4.2% | 301 | 3.4% | 367 | 4.2% |
| Tai Po | 34 | 4.4% | 33 | 4.2% | 404 | 4.6% | 363 | 4.1% |
| Sai Kung | 60 | 7.7% | 50 | 6.4% | 699 | 7.9% | 558 | 6.4% |
| Sha Tin | 75 | 9.6% | 72 | 9.3% | 985 | 11.2% | 813 | 9.2% |
| Kwai Tsing | 54 | 6.9% | 53 | 6.8% | 489 | 5.6% | 595 | 6.8% |
| Islands | 21 | 2.7% | 19 | 2.5% | 196 | 2.2% | 216 | 2.5% |
| Total | 779 | 100.0% | 779 | 100.0% | 8,794 | 100.0% | 8,793 | 100.0% |
| Missing case(s) | 109 | | 109 | | 165 | | 166 | |

| Political inclination:* | Hong Kong People Representative Panel | | | | Hong Kong People Volunteer Panel | | | |
|---|---------------------------------------|--------|-----------------|--------|----------------------------------|--------|-----------------|--------|
| | Raw sample | | Weighted sample | | Raw sample | | Weighted sample | |
| | Freq | % | Freq | % | Freq | % | Freq | % |
| Pro-democracy camp | 377 | 42.5% | 185 | 20.9% | 4,317 | 50.5% | 2,365 | 29.2% |
| Pro-establishment camp | 33 | 3.7% | 96 | 10.9% | 36 | 0.4% | 554 | 6.8% |
| Localist | 209 | 23.6% | 106 | 12.0% | 3,290 | 38.5% | 1,335 | 16.5% |
| Centrist | 104 | 11.7% | 210 | 23.6% | 239 | 2.8% | 1,327 | 16.4% |
| Others | 7 | 0.8% | 3 | 0.3% | 95 | 1.1% | 149 | 1.8% |
| No political inclination / politically neutral / don't belong to any camp | 137 | 15.4% | 262 | 29.5% | 423 | 5.0% | 2,013 | 24.9% |
| Don't know / hard to say | 20 | 2.3% | 26 | 2.9% | 143 | 1.7% | 355 | 4.4% |
| Total | 887 | 100.0% | 887 | 100.0% | 8,543 | 100.0% | 8,097 | 100.0% |
| Missing case(s) | 1 | | 1 | | 416 | | 862 | |

| Voted political camp:* | Hong Kong People Representative Panel | | | | Hong Kong People Volunteer Panel | | | |
|---|---------------------------------------|--------|-----------------|--------|----------------------------------|--------|-----------------|--------|
| | Raw sample | | Weighted sample | | Raw sample | | Weighted sample | |
| | Freq | % | Freq | % | Freq | % | Freq | % |
| Democratic | 642 | 72.3% | 233 | 26.2% | 8,127 | 91.2% | 2,351 | 26.4% |
| Non-democratic | 104 | 11.7% | 324 | 36.5% | 116 | 1.3% | 2,337 | 26.2% |
| Did not vote / blank vote / void vote / don't know / hard to say / refuse to answer | 123 | 13.9% | 277 | 31.2% | 498 | 5.6% | 3,065 | 34.4% |
| Not a registered voter | 19 | 2.1% | 54 | 6.0% | 175 | 2.0% | 1,164 | 13.1% |
| Total | 888 | 100.0% | 888 | 100.0% | 8,916 | 100.0% | 8,917 | 100.0% |

* (Only for respondents aged 18 or above or refuse to answer age)

Appendix 2: Contact Information

| | Hong Kong People Representative Panel | Hong Kong People Volunteer Panel |
|-------------------------|---------------------------------------|----------------------------------|
| Total valid samples | 888 | 8,959 |
| Survey period | 21/6-12/7/2021 | 21/6-12/7/2021 |
| Success rate | 11.0% | 10.7% |
| Questionnaires sent out | 8,071 | 83,964 |
| Questionnaires received | 1,469 | 14,652 |
| Ineligible samples | 10 | 112 |
| Invalid samples | 482 | 4849 |
| Incomplete samples | 89 | 732 |
| Standard error | 1.7% | 0.5% |
| Sampling error | 3.3% | 1.0% |

Appendix 3: Quantitative analyses

| Q1 What do you think is your chance of being infected with the Coronavirus disease, also known as Wuhan pneumonia, in the coming one month? [Logarithmic Scale] | Hong Kong People Representative Panel | | Hong Kong People Volunteer Panel | |
|---|---------------------------------------|---------------------------|----------------------------------|-----------------------------|
| | Frequencies | Percentages (Base=886) | Frequencies | Percentages (Base=8,949) |
| 0% chance (Certainly not) | 112 | 12.7% | 1,156 | 12.9% |
| 0.001% chance (1 in 100,000) | 186 | 21.0% | 1,398 | 15.6% |
| 0.01% chance (1 in 10,000) | 70 | 7.9% | 699 | 7.8% |
| 0.1% chance (1 in 1,000) | 40 | 4.5% | 458 | 5.1% |
| 1% chance (1 in 100) | 73 | 8.2% | 1,168 | 13.1% |
| 5% chance (1 in 20) | 44 | 5.0% | 551 | 6.2% |
| 10% chance (1 in 10) }Small chance | 47 }630 | 5.3% }71.1% | 795 }6,893 | 8.9% }77.0% |
| 15% chance | 6 | 0.7% | 58 | 0.6% |
| 20% chance | 11 | 1.2% | 303 | 3.4% |
| 25% chance | 8 | 0.9% | 79 | 0.9% |
| 30% chance | 14 | 1.6% | 148 | 1.7% |
| 35% chance | 2 | 0.3% | 32 | 0.4% |
| 40% chance | 13 | 1.4% | 42 | 0.5% |
| 45% chance | 4 | 0.4% | 6 | 0.1% |
| 50% chance | 31 | 3.5% | 311 | 3.5% |
| 60% chance | 2 | 0.2% | 16 | 0.2% |
| 70% chance | 1 | 0.1% | 15 | 0.2% |
| 80% chance }Large chance | 1 }6 | 0.1% }0.7% | 7 }125 | 0.1% }1.4% |
| 90% chance | <1 | <0.1% | 41 | 0.5% |
| 100% chance (Certainly will) | 2 | 0.2% | 46 | 0.5% |
| Others | 1 | 0.1% | 5 | 0.1% |
| Don't know / hard to say | 218 | 24.6% | 1,615 | 18.1% |
| Total | 886 | 100.0% | 8,949 | 100.0% |
| Mean | | 6.7% | | 7.5% |
| Standard error of mean | | 0.6% | | 0.2% |
| Median | | 0.0% | | 0.1% |
| Refuse to answer | | 2 | | 10 |

| Q2 How satisfied or dissatisfied are you with the government's performance in handling novel coronavirus pneumonia? | Hong Kong People Representative Panel | | Hong Kong People Volunteer Panel | |
|---|---------------------------------------|---------------------------|----------------------------------|-----------------------------|
| | Frequencies | Percentages (Base=884) | Frequencies | Percentages (Base=8,958) |
| Very much satisfied | 66 | 7.5% | 797 | 8.9% |
| Somewhat satisfied | 211 | 23.8% | 1,667 | 18.6% |
| Half-half | 163 | 18.4% | 1,110 | 12.4% |
| Somewhat dissatisfied | 104 | 11.7% | 1,212 | 13.5% |
| Very much dissatisfied | 336 | 38.0% | 4,133 | 46.1% |
| Don't know / hard to say | 4 | 0.5% | 40 | 0.4% |
| Total | 884 | 100.0% | 8,958 | 100.0% |
| Mean values | | 2.5 | | 2.3 |
| Standard error of mean | | <0.1 | | <0.1 |
| Median | | 2.4 | | 2.0 |
| <i>Refuse to answer</i> | | 4 | | 1 |
| Net value (Satisfied-Dissatisfied) | | -18.4% | | -32.1% |

Appendix 4: Sample count for each constituency (18 in total)

| Rank | District Council | Hong Kong People Representative Panel | Hong Kong People Volunteer Panel | Total |
|-------------|-------------------------|--|---|--------------|
| 1 | Sha Tin | 75 | 985 | 1060 |
| 2 | Eastern | 80 | 834 | 914 |
| 3 | Sai Kung | 60 | 699 | 759 |
| 4 | Kwun Tong | 62 | 650 | 712 |
| 5 | Yuen Long | 63 | 597 | 660 |
| 6 | Tuen Mun | 47 | 518 | 565 |
| 7 | Kwai Tsing | 54 | 489 | 543 |
| 8 | Kowloon City | 50 | 466 | 516 |
| 9 | Sham Shui Po | 35 | 475 | 510 |
| 10 | Wong Tai Sin | 35 | 449 | 484 |
| 11 | Tsuen Wan | 37 | 444 | 481 |
| 12 | Tai Po | 34 | 404 | 438 |
| 13 | Yau Tsim Mong | 31 | 371 | 402 |
| 14 | Southern | 29 | 355 | 384 |
| 15 | Central & Western | 28 | 339 | 367 |
| 16 | North | 23 | 301 | 324 |
| 17 | Wan Chai | 15 | 222 | 237 |
| 18 | Islands | 21 | 196 | 217 |
| | Total | 779 | 8,794 | 9,573 |

Appendix 5: Survey questionnaire (21/6-12/7/2021)

HKPORI: We Hongkongers & Community Health Survey

Hong Kong Public Opinion Research Institute is politically neutral, we welcome different opinions. All personal data will be kept strictly confidential. You can fill in the questionnaire again at any time to express your latest views, and your last submission will be collated. For enquiries, please email us at panel@pori.hk .

Last updated: xxxx-xx-xx xx:xx

Tentative next update: xxxx-xx-xx

***Required**

(Registered member) Panel ID: *

(Please do not alter the pre-filled ID)

(Registered member) Invitation token: *

(Please do not alter the pre-filled token)

(New member) Please first register as a HKPOP Panel member at

<https://www.pori.hk/panel.html?lang=en> *

- Already registered as a member earlier (Please go to the survey platform by clicking on the designated hyperlink sent to you by email)
- Have just registered as a member
- Not yet registered as a member, and will register after completing the survey (Please note: Your response will be removed if you have not yet successfully registered as a member at the time of data analysis)

Eligibility Confirmation

(New member)

Email used / will be used in registration: *

Are you a Hong Kong resident aged 12 or above? *

- Yes
- No
- Don't know / hard to say

Community Health

How likely do you think it is that you will contract novel coronavirus pneumonia over the next one month?

(Please select the closest answer. If you have another answer, please fill in the last item.)

- 0% chance (Certainly not)
- 0.001% chance (1 in 100,000)
- 0.01% chance (1 in 10,000)
- 0.1% chance (1 in 1,000)
- 1% chance (1 in 100)
- 5% chance (1 in 20)
- 10% chance (1 in 10)
- 15% chance
- 20% chance
- 25% chance
- 30% chance
- 35% chance
- 40% chance
- 45% chance
- 50% chance
- 60% chance
- 70% chance
- 80% chance
- 90% chance
- 100% chance (Certainly will)
- Don't know / hard to say
- Other: _____

Community Health**What do you think is the appropriate timing to completely lift the regulation prohibiting gatherings of more than a specific number of people in public places under the pandemic?**

(Please select the closest answer; If there is no suitable answer at all, please select “don’t know / hard to say”).

- Should completely lift the regulation prohibiting gatherings of more than a specific number of people in public places unconditionally → [Skip questions related to this regulation](#)
- Number of recovered cases exceeds newly confirmed cases each day
- Number of newly confirmed cases each day falls to a single digit
- No more newly confirmed local case
- No more newly confirmed local or imported case
- No more newly confirmed local case in L consecutive days (Please input L in the next page)
- No more newly confirmed local and imported case in N consecutive days (Please input N in the next page)
- Don’t know / hard to say

Community Health**How many consecutive days (the value of L mentioned before) with no more newly confirmed local case do you think there should be before it is appropriate to completely lift the regulation prohibiting gatherings of more than a specific number of people in public places?**

Community Health**How many consecutive days (the value of N mentioned before) with no more newly confirmed local and imported case do you think there should be before it is appropriate to completely lift the regulation prohibiting gatherings of more than a specific number of people in public places?**

Community Health**How many newly confirmed cases each day should there be before it would be appropriate to prohibit gatherings of more than 2 people?
[The pandemic should be at its worst; For reference, there are 12 newly confirmed cases on February 23, 2021]**

(To opt for “don’t know / hard to say”, please input 99999)

How many newly confirmed cases each day should there be before it would be appropriate to prohibit gatherings of more than 4 people?\n[The number of newly confirmed cases should be fewer than that in the previous question]

(To opt for “don’t know / hard to say”, please input 99999)

How many newly confirmed cases each day should there be before it would be appropriate to prohibit gatherings of more than 8 people?\n[The number of newly confirmed cases should be fewer than that in the previous question]

(To opt for “don’t know / hard to say”, please input 99999)

How many newly confirmed cases each day should there be before it would be appropriate to prohibit gatherings of more than 16 people?\n[The number of newly confirmed cases should be fewer than that in the previous question]

(To opt for “don’t know / hard to say”, please input 99999)

Please list combinations of [number of cases & number of people allowed in gatherings] that you think is appropriate in the field below:

Other Opinions

How satisfied or dissatisfied are you with the government’s performance in handling novel coronavirus pneumonia?

- Very much satisfied
- Somewhat satisfied
- Half-half
- Somewhat dissatisfied
- Very much dissatisfied
- Don’t know / hard to say

Please rate on a scale of 0 to 100 your extent of support to the Chief Executive Carrie Lam, with 0 indicating absolutely not supportive, 100 indicating absolutely supportive and 50 indicating half-half. How would you rate the Chief Executive Carrie Lam?[For weighting purposes only]

(To opt for “don’t know / hard to say”, please input 8888)

Generally speaking, how satisfied or dissatisfied are you with the current political condition in Hong Kong?

- Very much satisfied
- Somewhat satisfied
- Half-half
- Somewhat dissatisfied
- Very much dissatisfied
- Don't know / hard to say

Generally speaking, how satisfied or dissatisfied are you with the current economic condition in Hong Kong?

- Very much satisfied
- Somewhat satisfied
- Half-half
- Somewhat dissatisfied
- Very much dissatisfied
- Don't know / hard to say

Generally speaking, how satisfied or dissatisfied are you with the current livelihood condition in Hong Kong?

- Very much satisfied
- Somewhat satisfied
- Half-half
- Somewhat dissatisfied
- Very much dissatisfied
- Don't know / hard to say

Other Opinions

Do you have any survey question to suggest for our surveys?

(If you do not have any suggestion, please leave this space blank.)

Do you have any needs which you want us to forward to your District Councillor or other persons you name here? (Please write down your contacts)

(The request you make here is not part of our study, we simply want to bridge people who need help with people who can help.)

Personal Information (Registered member)

The following section is about personal information, including: gender, age, educational attainment, occupation, political inclination, area of residence, voting behaviour in the 2019 District Council Election. If you have already provided relevant information in the previous PopPanel survey series and have nothing to add or update, you may skip these questions. We will use the past data you provided in this survey series for analysis.

- I have already provided my personal information, and has nothing to add or update (skip questions on personal information)
- Provide / update personal information now

Personal Information**Gender**

- Male
- Female
- Other

Age

Age range

(If prefer not to provide exact age)

- 12 - 14
- 15 - 17
- 18 - 19
- 20 - 24
- 25 - 29
- 30 - 34
- 35 - 39
- 40 - 44
- 45 - 49
- 50 - 54
- 55 - 59
- 60 - 64
- 65 - 69
- 70 or above

Educational attainment

(The highest level attended, regardless of whether you have completed the course, including what you are attending)

- Primary or below
- Lower secondary (Secondary 1 to 3)
- Upper secondary (Secondary 4 to 7 / DSE / Yi Jin)
- Tertiary: non-degree course (including diploma / certificate / sub-degree course)
- Tertiary: bachelor degree course
- Tertiary: postgraduate school or above

Occupation

(Owner / self-employed / freelance / part time / civil servant are not valid answers, please answer according to the job nature or content)

- Administrator and professional
- Clerical and service worker
- Production worker
- Student
- Home-maker / housewife
- Retired person
- Unemployed / between jobs / other non-employed
- Other: _____

Which of the following best describes your political inclination?

- Localist
- Pro-democracy camp
- Centrist
- Pro-establishment camp
- No political inclination / politically neutral / do not belong to any camp
- Don't know / hard to say
- Other: _____

Area of residence

- Central & Western District
- Wan Chai
- Eastern District
- Southern District
- Yau Tsim Mong
- Sham Shui Po
- Kowloon City
- Wong Tai Sin
- Kwun Tong
- Tsuen Wan
- Tuen Mun
- Yuen Long
- North District
- Tai Po
- Sai Kung
- Sha Tin
- Kwai Tsing
- Islands

Which candidate did you vote for in the 2019 District Council Election?

- Candidate of pro-democracy camp, including localist
- Candidate of non-pro-democracy camp, including pro-establishment camp and centrist
- Don't know / hard to say
- Blank / void vote
- Did not vote (was a registered voter of the election)
- Did not vote (was not a registered voter of the election)

End of Questionnaire

Thank you for completing the survey. For enquiries, please email us at panel@pori.hk or call us at 3844 3111 during office hours.