

POP



HONG KONG PUBLIC OPINION PROGRAM

HONG KONG PUBLIC OPINION RESEARCH INSTITUTE

香港民意研究所 之 香港民意研究計劃

Community Democracy Project -

Community Health Module

Press Release

April 27, 2020

Contact Information - Community Health Module

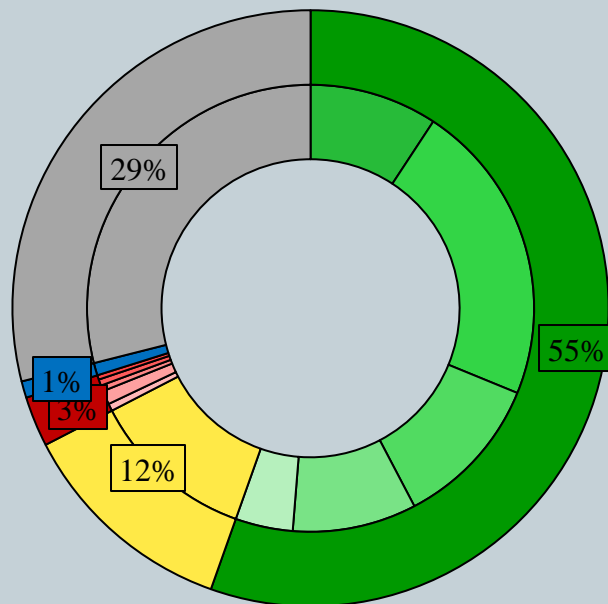
2

	HKPOP Panel	
Date of survey	April 14, 3pm – April 24, 3pm	
Survey method	Online survey	
Target population	Hong Kong residents aged 12+	
	Representative Panel	Volunteer Panel
Total sample size	885	9,070
Response rate	11.3%	13.7%
Sampling error	Sampling error of percentages at +/-3% at 95% confidence level	Sampling error of percentages at +/-1% at 95% confidence level
Weighting method	The figures are rim-weighted according to 1) gender-age distribution of Hong Kong population and by District Councils population figures from Census and Statistics Department; 2) Voting results of District Councils Election from Registration and Electoral Office; 3) rating distribution of Chief Executive from regular tracking surveys.	

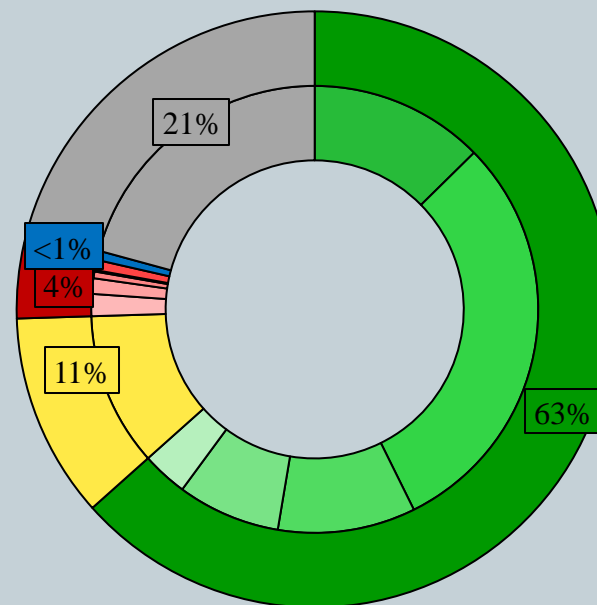
Survey Result - Community Health Module

3

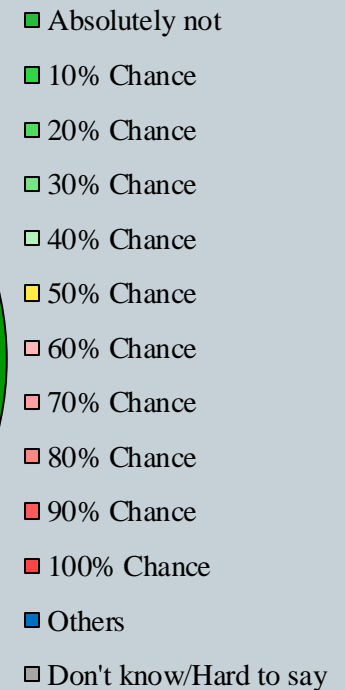
- Latest Date of survey: 14-24/4/2020
- Question: How likely do you think you will be infected with the Novel Coronavirus (COVID-19) in the next month, also known as “Wuhan pneumonia”?



Representative Panel



Volunteer Panel

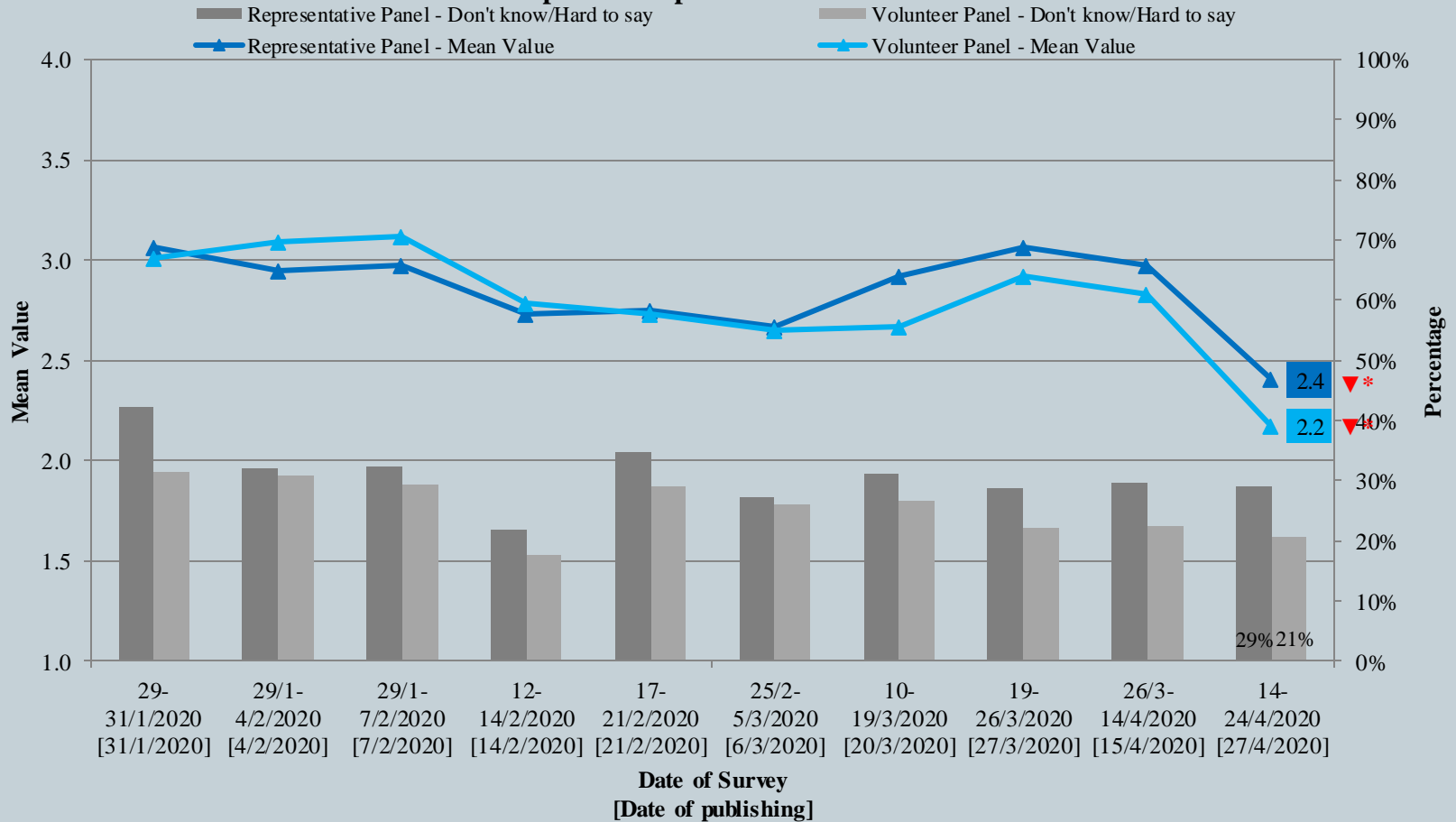


Survey Result - Community Health Module

4

市民對預計感染新型冠狀病毒肺炎的機會率評估

Assessment of the public's expected chance of COVID-19 infection



@ The answer options are 0-10 scale and "others/don't know/hard to say".

* Significant Change

Survey Result - Community Health Module

5

- Latest Date of survey : 14-24/4/2020
- Last Date of survey : 26/3-14/4/2020 (Representative N=1,244 Volunteer N=12,702)

Opinion Questions*		Hong Kong People Representative Panel (N=873-881)				Hong Kong People Volunteer Panel (N=8,938-9,040)			
		Satisfied	Half-half	Dissatisfied	Mean	Satisfied	Half-half	Dissatisfied	Mean
Q2 How satisfied or dissatisfied are you with the performance of the HK Government in implementing the two rounds of the Prevention and Control of Disease Fund?^	Latest	31%	22%	46%	2.5	28%	18%	52%	2.5
	Last	26%	18%	55%	2.3	23%	11%	65%	2.1
Q3 How satisfied or dissatisfied are you with HK government's performance in tackling the novel coronavirus pneumonia outbreak?^	Latest	31% ▲*	18%	50% ▼*	2.4	29% ▲*	10%	61% ▼*	2.3
	Latest	25%	22%	52%	2.3	22%	12%	65%	2.1

@ Answer options includes: very satisfied/somewhat satisfied/half-half/somewhat dissatisfied/very dissatisfied/don't know/hard to say

^ Survey Date : 20-24/4/2020

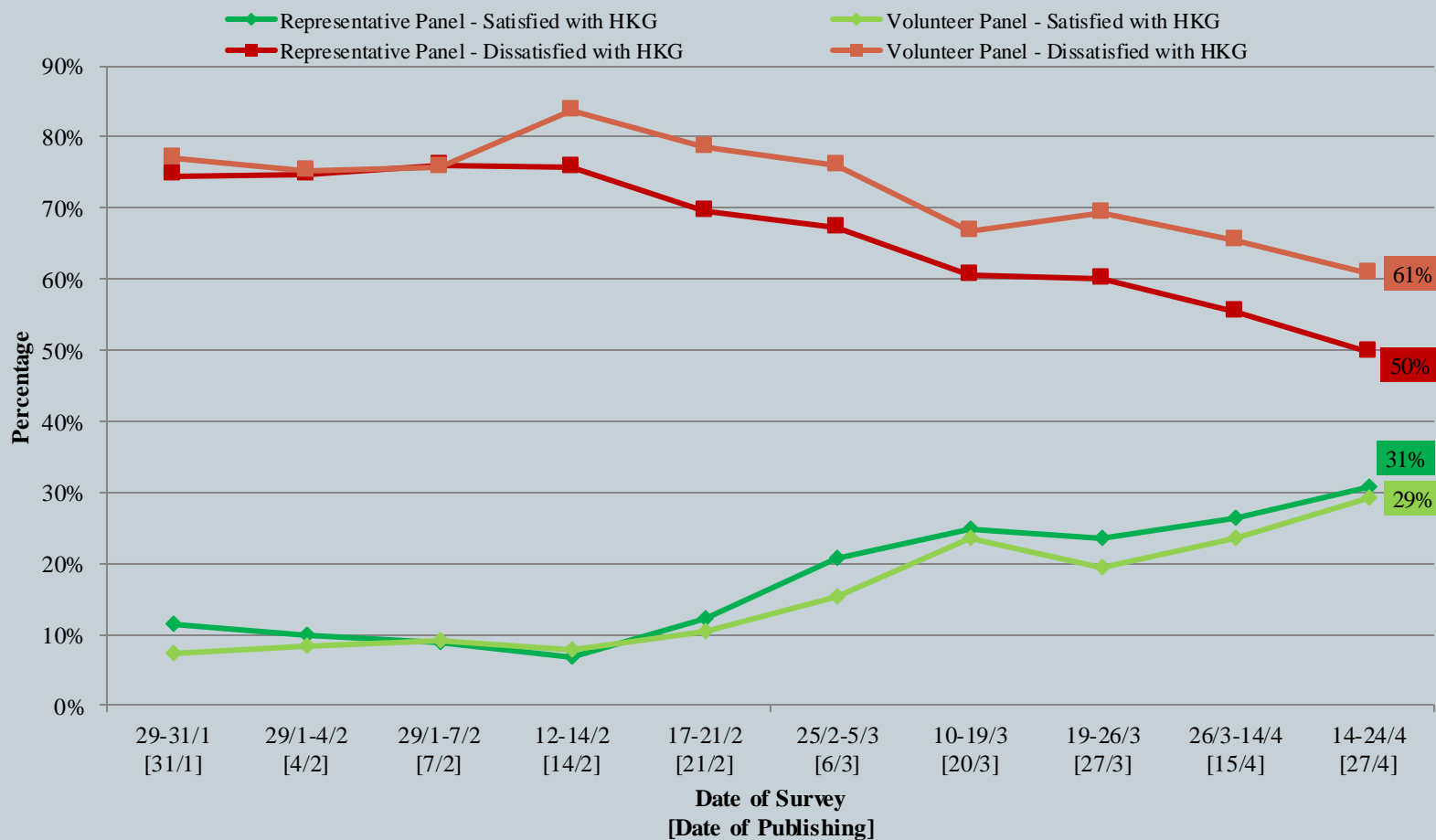
* Significant Change

Survey Result - Community Health Module

6

市民評價香港政府應付新冠肺炎的表現

Appraisal of HK Government's performance in handling novel coronavirus pneumonia



Survey Result - Community Health Module

7

市民評價香港政府應付新冠肺炎的表現

Appraisal of HK Government's performance in handling novel coronavirus pneumonia

- ◆ Representative Panel - Satisfied with HKG
- ◆ Volunteer Panel - Satisfied with HKG
- Representative Panel - Dissatisfied with HKG
- Volunteer Panel - Dissatisfied with HKG
- ▲ Representative Panel - Satisfied with WHO
- Representative Panel - Dissatisfied with WHO
- ▲ Volunteer Panel - Dissatisfied with WHO
- Volunteer Panel - Dissatisfied with WHO

