

POP



HONG KONG PUBLIC OPINION PROGRAM

HONG KONG PUBLIC OPINION RESEARCH INSTITUTE

香港民意研究所 之 香港民意研究計劃

限聚指數

Group Gathering Prohibition Index

14/5/2021

樣本資料 - 限聚指數基準調查

Contact Information - Group Gathering Prohibition Index Benchmark Survey

2

	香港民研意見群組成員 HKPOP Panel
調查日期 Survey date	16/4 15:00 – 21/4 15:00
調查方法 Survey method	以電郵接觸群組成員，並於網上完成調查 Online survey
訪問對象 Target population	十二歲或以上的香港市民 Hong Kong residents aged 12+
總成功樣本 Total sample size	6,330
回應比率 Response rate	6.7%
抽樣誤差 Sampling error	95% 置信水平，百分比誤差 +/-1% Sampling error of percentages at +/-1% at 95% confidence level
加權方法 Weighting method	按照1) 政府統計處提供的全港人口年齡及性別分佈統計數字、各區議會人口數字； 2) 選舉事務處提供的區議會選舉結果；3) 常規調查中的特首評分分佈數字，以 「反覆多重加權法」作出調整。 The figures are rim-weighted according to 1) gender-age distribution of Hong Kong population and by District Councils population figures from Census and Statistics Department; 2) Voting results of District Councils Election from Registration and Electoral Office; 3) rating distribution of Chief Executive from regular tracking surveys.

限聚指數

Group Gathering Prohibition Index

3

- **最新調查日期 Latest survey date: 16-21/4/2021 (N=6,330)**
- **上次調查日期 Last survey date: 22-29/3/2021 (N=6,806)**
- **上上次調查日期 Second last survey date: 8-22/3/2021 (N=6,210)**

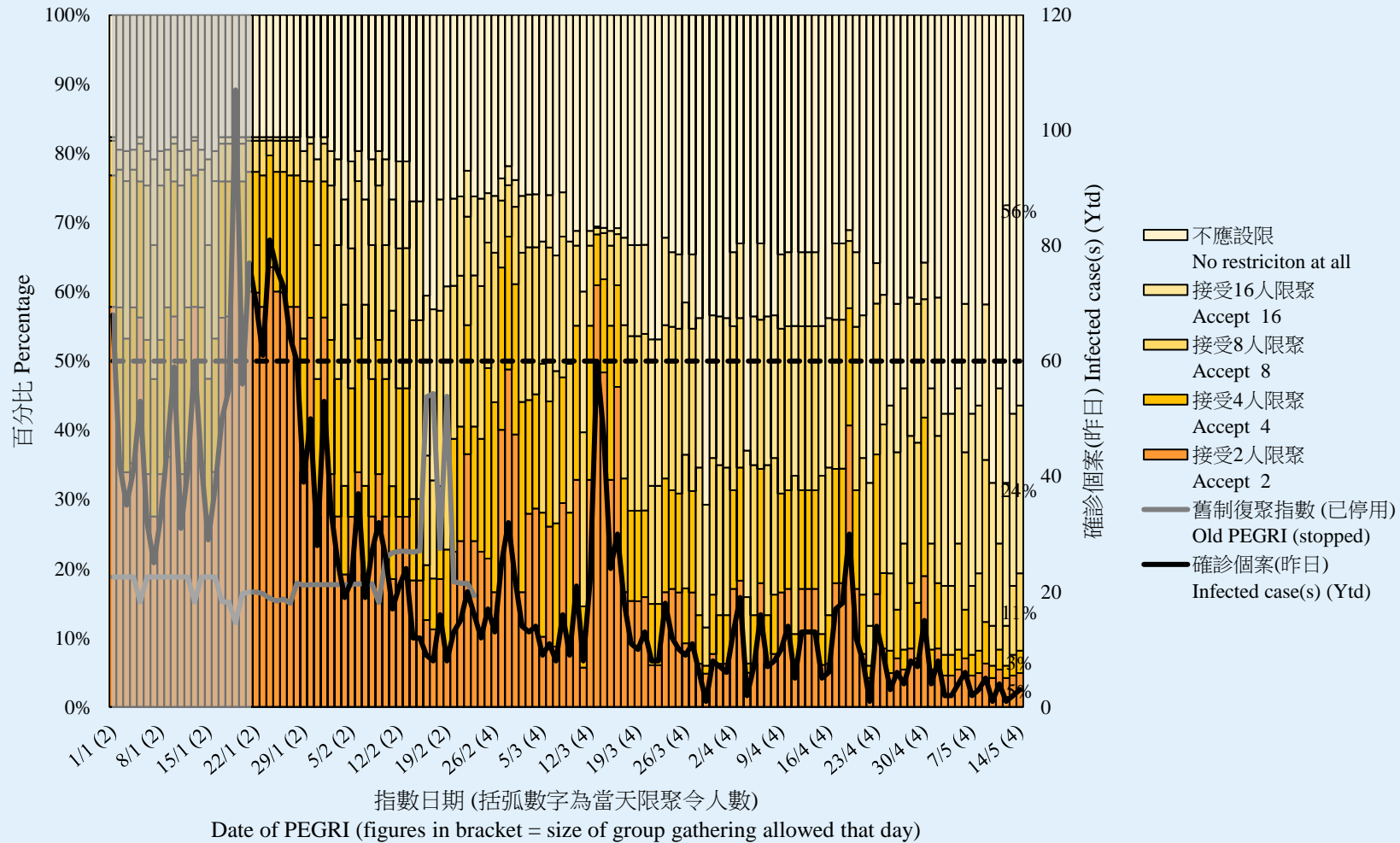
意見題目	Opinion Questions
<p>你認為香港應否無條件全面撤銷「限聚令」？</p> <ul style="list-style-type: none">▪ 應該無條件撤銷「限聚令」▪ 不應該，應視乎疫情而定▪ 不知道／很難說 <p>[追問沒有選擇應該“無條件撤銷「限聚令」”者] 你認為每天新增確診個案數應是多少，才適合將「限聚令」訂於2人？ 你認為每天新增確診個案數應是多少，才適合將「限聚令」訂於4人？ 你認為每天新增確診個案數應是多少，才適合將「限聚令」訂於8人？ 你認為每天新增確診個案數應是多少，才適合將「限聚令」訂於16人？</p> <p>請於以下欄位列舉你認為合適的 [個案數 及 限聚人數] 組合.....</p>	<p>Do you think the regulation prohibiting gatherings of more than a specific number of people in public places should be completely lifted unconditionally in Hong Kong?</p> <ul style="list-style-type: none">▪ Yes, the ban should be lifted unconditionally▪ No, it should depend on the epidemic situation▪ Don't know / hard to say <p>[For respondents NOT answering “Yes, the ban should be lifted unconditionally”] How many newly confirmed cases each day should there be before it would be appropriate to prohibit gatherings of more than 2 people? How many newly confirmed cases each day should there be before it would be appropriate to prohibit gatherings of more than 4 people? How many newly confirmed cases each day should there be before it would be appropriate to prohibit gatherings of more than 8 people? How many newly confirmed cases each day should there be before it would be appropriate to prohibit gatherings of more than 16 people?</p> <p>Please list combinations of [number of cases & number of people allowed in gatherings] that you think is appropriate in the field below:</p>

調查結果 - 限聚接受程度

Survey Result – Group Gathering Prohibition Acceptance Level

4

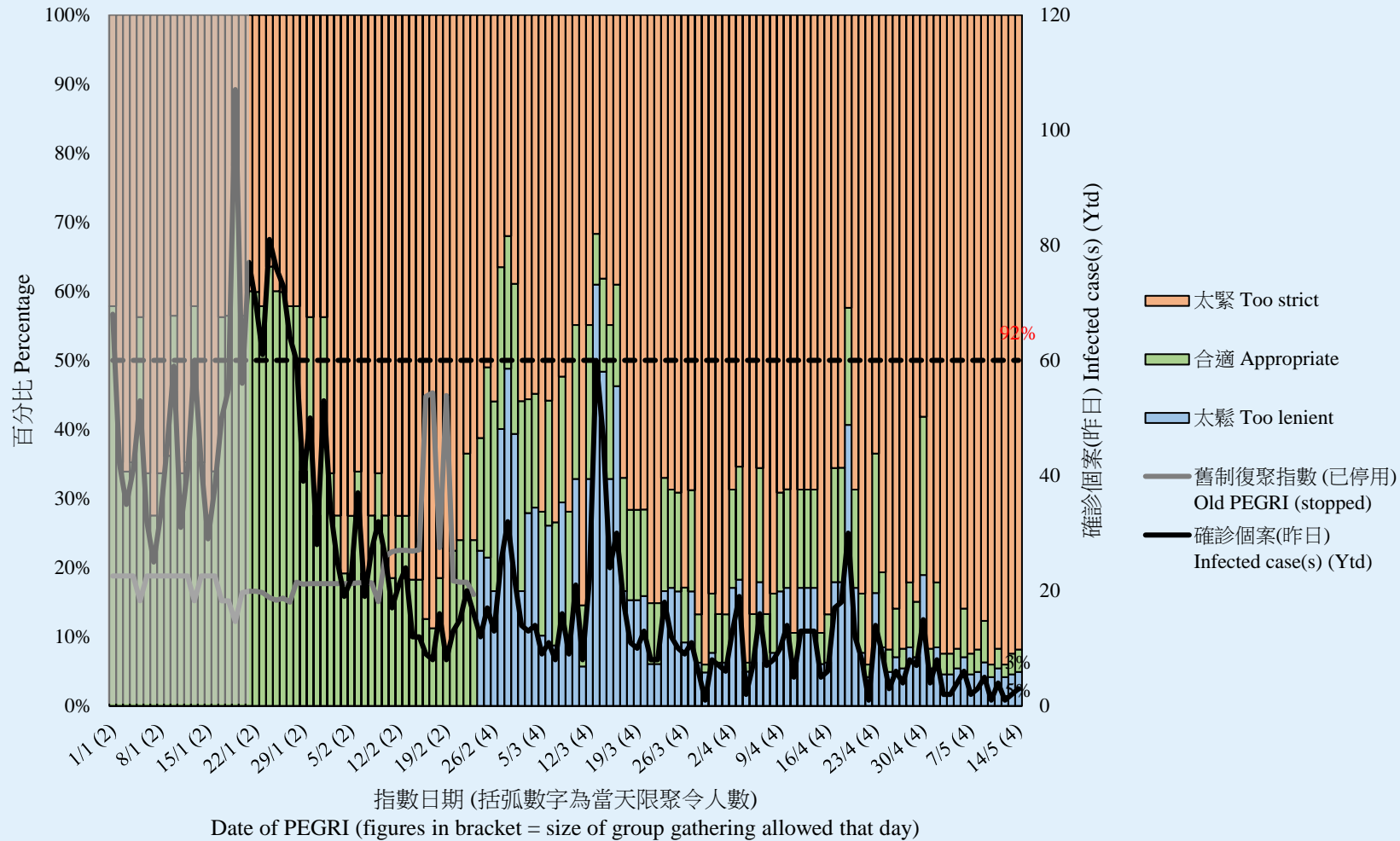
限聚接受程度 Group Gathering Prohibition Acceptance Level



調查結果 - 限聚接受程度

Survey Result – Group Gathering Prohibition Acceptance Level

限聚接受程度 Group Gathering Prohibition Acceptance Level

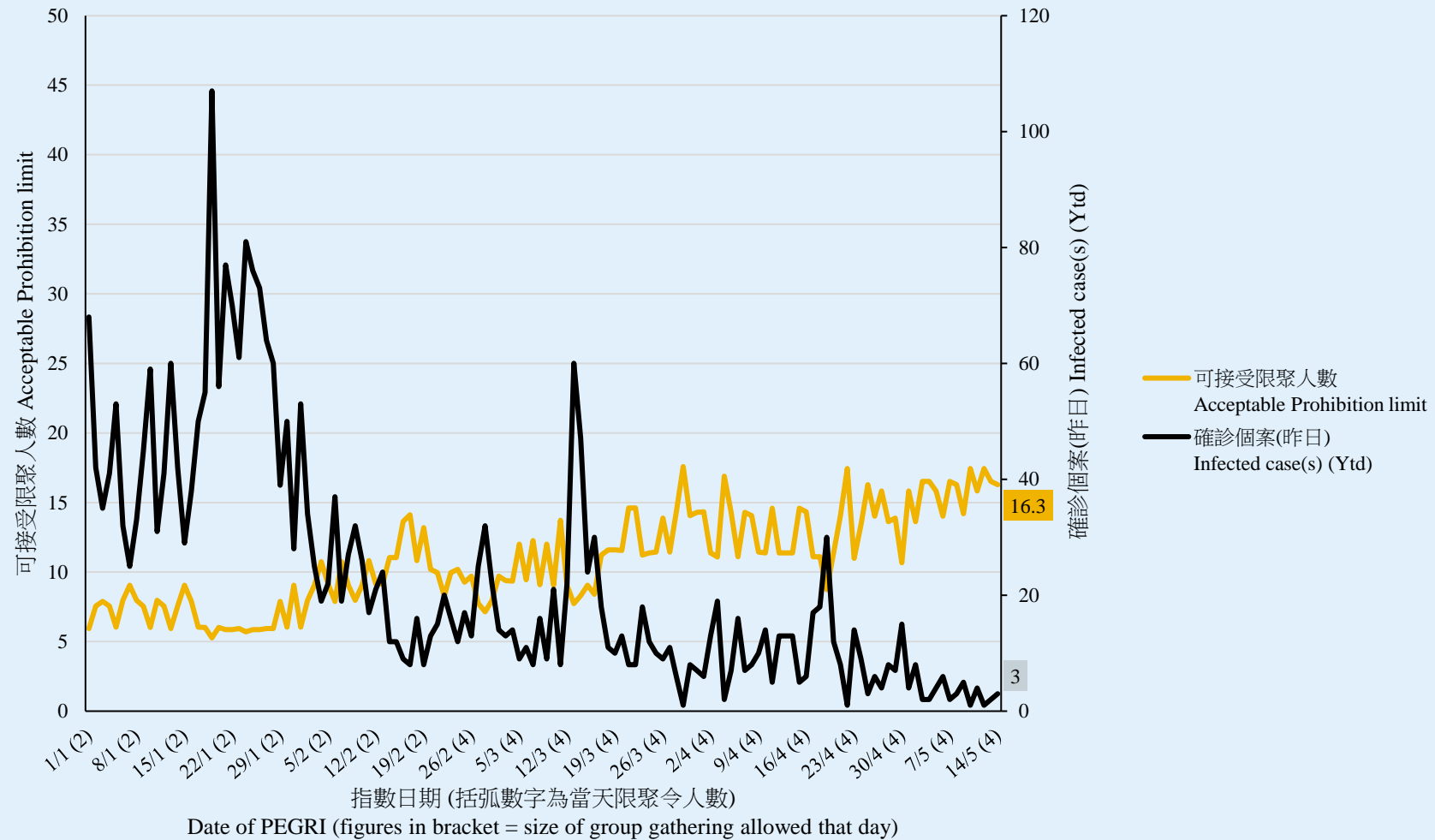


調查結果 - 限聚指數

Survey Result - Group Gathering Prohibition Index

6

限聚指數 Group Gathering Prohibition Index



限聚指數 - 分析評論

Group Gathering Prohibition Index – Commentary

7

中科監察研究員潘麒智指出，「政府以『疫苗氣泡』為基礎的新措施由4月29日實行至今，執法部門與各界別對相關法例仍在摸索當中。變種病毒來勢洶洶，但本地感染個案就維持在低位數字。因此，針對疫情發展，政府似乎應從外地入境人士加強檢測着手，而非以限聚令懲罰香港市民。我期望香港政府會進一步放寬限聚人數，讓市民重過正常生活。」

KC Poon, researcher from the CHINAT Monitor, observed, “The government’s new measure based on ‘vaccine bubble’ has been implemented since 29 April, but the law enforcement units and various industrial sectors are still working hard to sort out the legislated measures. In view of the development of the epidemic, it seems that the government should starts to strengthen the testing of foreign arrivals instead of punishing Hong Kong people by imposing restrictions on group gathering. I hope that the Hong Kong government will further relax the restriction on the number of people who can gather, so that people can lead a normal life again.”