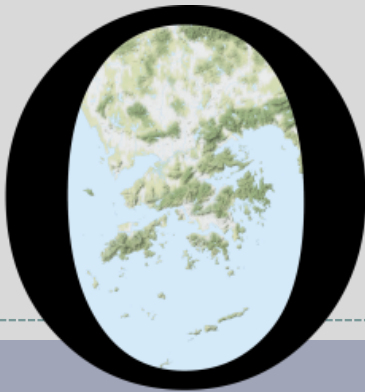


POP



HONG KONG PUBLIC OPINION PROGRAM

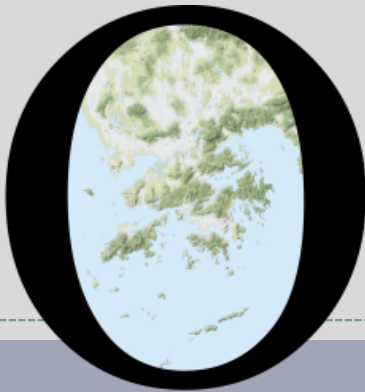
HONG KONG PUBLIC OPINION RESEARCH INSTITUTE

香港民意研究所 之 香港民意研究計劃

Latest Tracking Poll Results

May 11, 2021

POP



HONG KONG PUBLIC OPINION PROGRAM

HONG KONG PUBLIC OPINION RESEARCH INSTITUTE

香港民意研究所 之 香港民意研究計劃

Community Democracy Project -

Community Health Module

Latest Results

May 11, 2021

Contact Information - Community Health Module

3

	HKPOP Panel	
Date of survey	April 19, 3pm – May 10, 3pm	
Survey method	Online survey	
Target population	Hong Kong residents aged 12+	
	Representative Panel	Volunteer Panel
Total sample size	927	7,522
Response rate	10.2%	8.8%
Sampling error	Sampling error of percentages at +/-3% at 95% confidence level	Sampling error of percentages at +/-1% at 95% confidence level
Weighting method	The figures are rim-weighted according to 1) gender-age distribution of Hong Kong population and by District Councils population figures from Census and Statistics Department; 2) Voting results of District Councils Election from Registration and Electoral Office; 3) rating distribution of Chief Executive from regular tracking surveys.	

Survey Result - Community Health Module

4

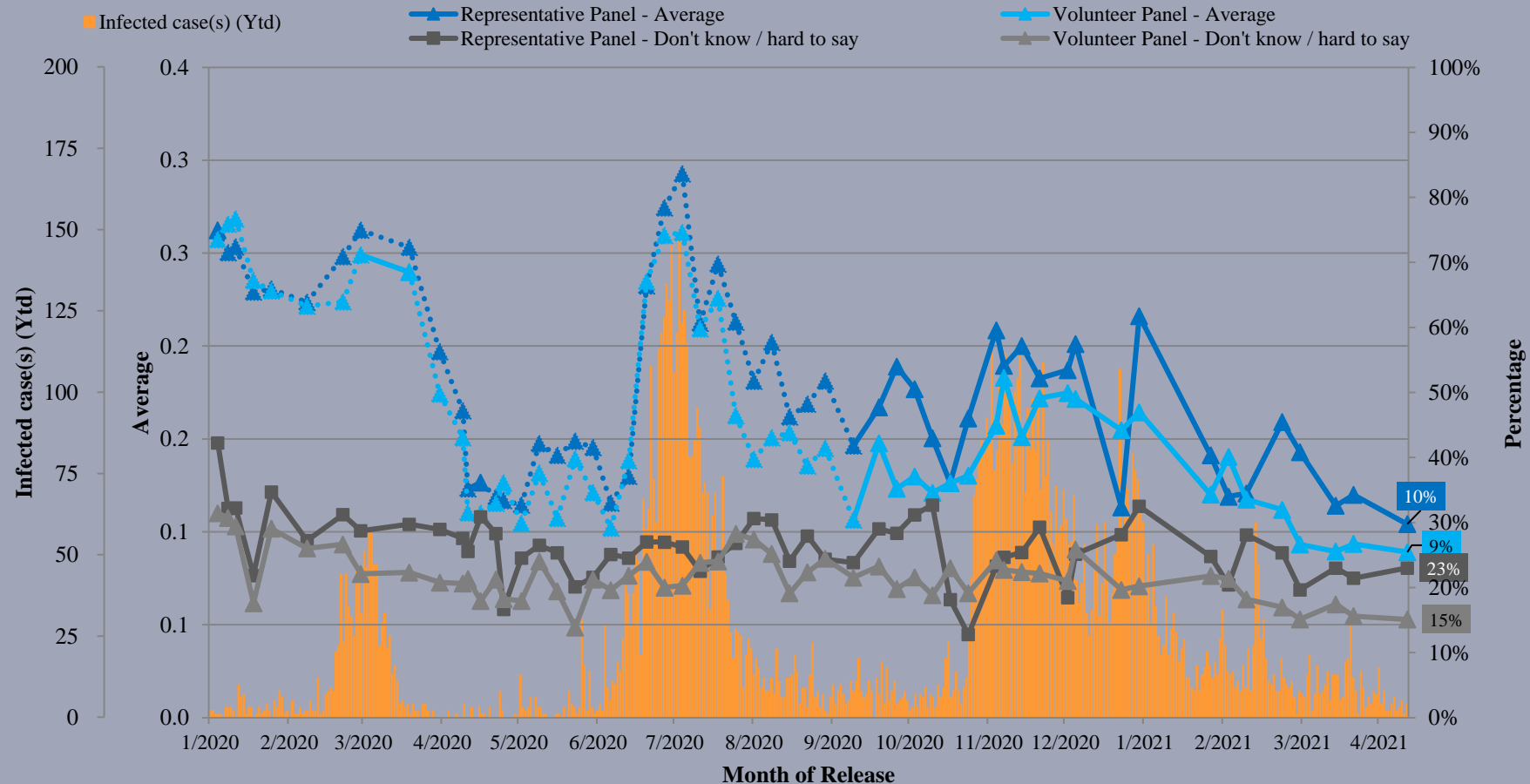
- **Latest survey period: 19/4-10/5/2021** (*Representative Panel N=925 Volunteer Panel N=7,507*)
- **Last survey period: 12-19/4/2021** (*Representative Panel N=655 Volunteer Panel N=5,692*)
- **Second last survey period: 29/3-12/4/2021** (*Representative Panel N=980 Volunteer Panel N= 9,125*)

Opinion Question [^]		Representative Panel (N=925)		Volunteer Panel (N=7,507)	
		Don't know / hard to say	Average	Don't know / hard to say	Average
Q1 How likely do you think it is that you will contract novel coronavirus pneumonia over the next one month? [Logarithmic Scale]	Latest	23%	10%	15%	9%
	Last	21%	12%	16%	9%
	Second Last	23%	11%	17%	9%

[^] Answer options included: 0-10 rating scale, others and don't know / hard to say. Answer options changed from linear scale to logarithmic scale since Oct 2020.

Survey Result - Community Health Module

Assessment of the public's expected chance of COVID-19 infection



^ Answer options included: 0-10 rating scale, others and don't know / hard to say. Answer options changed from linear scale to logarithmic scale since Oct 2020.

Survey Result - Community Health Module

6

- **Latest survey period: 19/4-10/5/2021** (*Representative Panel N=926 Volunteer Panel N=7,512*)
- **Last survey period: 12-19/4/2021** (*Representative Panel N=655 Volunteer Panel N=5,703*)
- **Second last survey period: 29/3-12/4/2021** (*Representative Panel N=986 Volunteer Panel N= 9,147*)

Opinion Question [^]		Representative Panel (N=926)				Volunteer Panel (N=7,512)			
		Satisfied	Half-half	Dissatisfied	Mean [†]	Satisfied	Half-half	Dissatisfied	Mean [†]
Q2 How satisfied or dissatisfied are you with the government's performance in handling novel coronavirus pneumonia?	Latest	21% ▲*	20% ▼*	58%	2.3	21% ▼*	17% ▲*	62% ▼*	2.2 ▲*
	Last	17%	27%	56%	2.3	25%	6%	68%	2.1
	Second Last	22%	22%	54%	2.3	23%	11%	65%	2.1

[^] Answer options included: very much satisfied, somewhat satisfied, half-half, somewhat dissatisfied, very much dissatisfied and don't know / hard to say

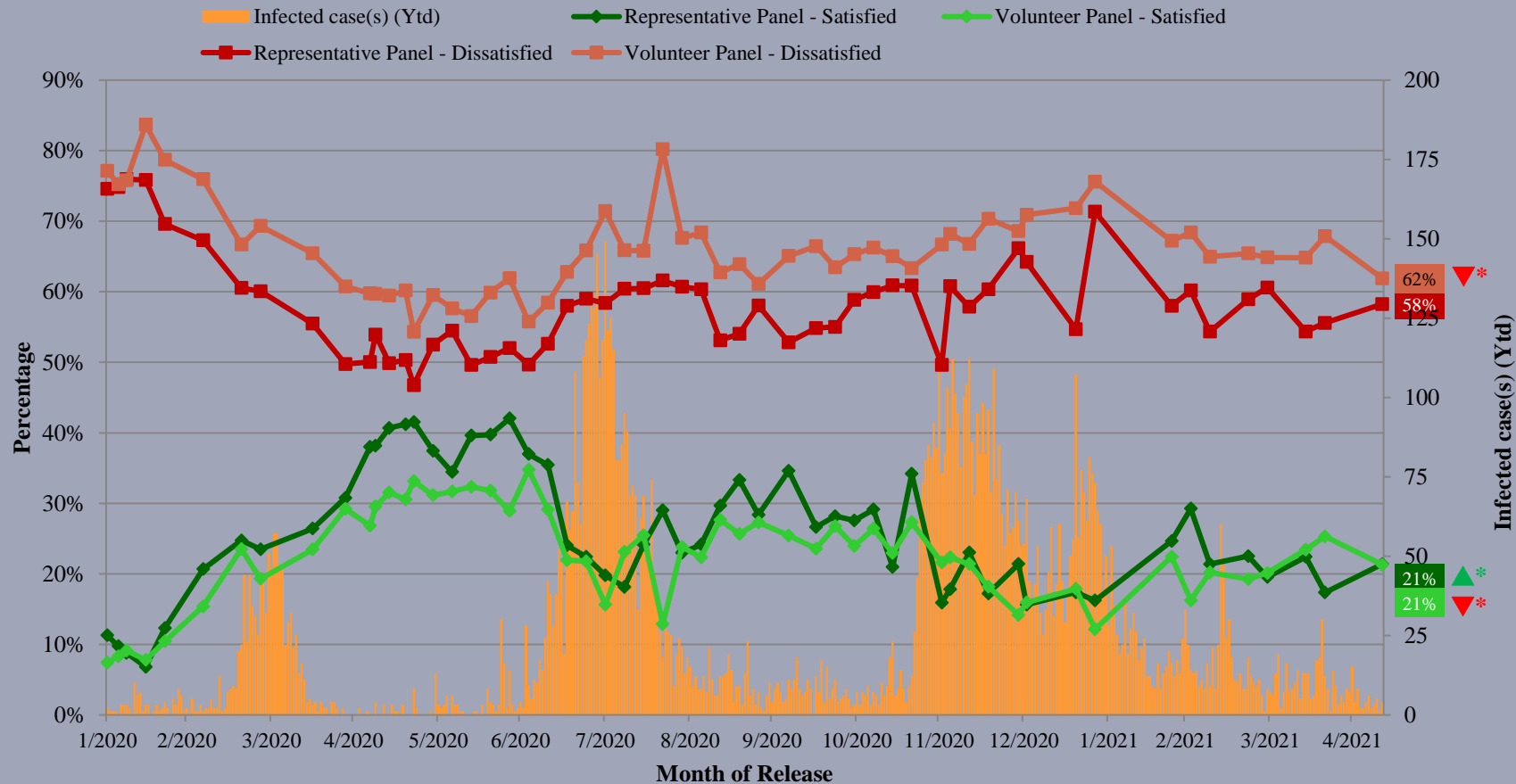
[†] The mean value is calculated by quantifying all individual responses into 1, 2, 3, 4, 5 marks according to their degree of positive level, where 1 is the lowest and 5 the highest, and then calculate the sample mean.

* Significant change

Survey Result - Community Health Module

7

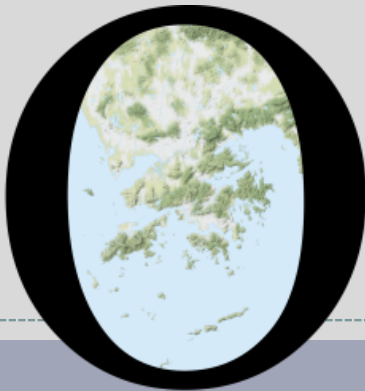
Assessment of the public's expected chance of COVID-19 infection



^ Answer options included: very much satisfied, somewhat satisfied, half-half, somewhat dissatisfied, very much dissatisfied and don't know / hard to say

* Significant change

POP



HONG KONG PUBLIC OPINION PROGRAM

HONG KONG PUBLIC OPINION RESEARCH INSTITUTE

香港民意研究所 之 香港民意研究計劃

限聚指數

Group Gathering Prohibition Index

11/5/2021

樣本資料 - 限聚指數基準調查

Contact Information - Group Gathering Prohibition Index Benchmark Survey

9

	香港民研意見群組成員 HKPOP Panel
調查日期 Survey date	16/4 15:00 – 21/4 15:00
調查方法 Survey method	以電郵接觸群組成員，並於網上完成調查 Online survey
訪問對象 Target population	十二歲或以上的香港市民 Hong Kong residents aged 12+
總成功樣本 Total sample size	6,330
回應比率 Response rate	6.7%
抽樣誤差 Sampling error	95% 置信水平，百分比誤差 +/-1% Sampling error of percentages at +/-1% at 95% confidence level
加權方法 Weighting method	按照1) 政府統計處提供的全港人口年齡及性別分佈統計數字、各區議會人口數字； 2) 選舉事務處提供的區議會選舉結果；3) 常規調查中的特首評分分佈數字，以 「反覆多重加權法」作出調整。 The figures are rim-weighted according to 1) gender-age distribution of Hong Kong population and by District Councils population figures from Census and Statistics Department; 2) Voting results of District Councils Election from Registration and Electoral Office; 3) rating distribution of Chief Executive from regular tracking surveys.

限聚指數

Group Gathering Prohibition Index

10

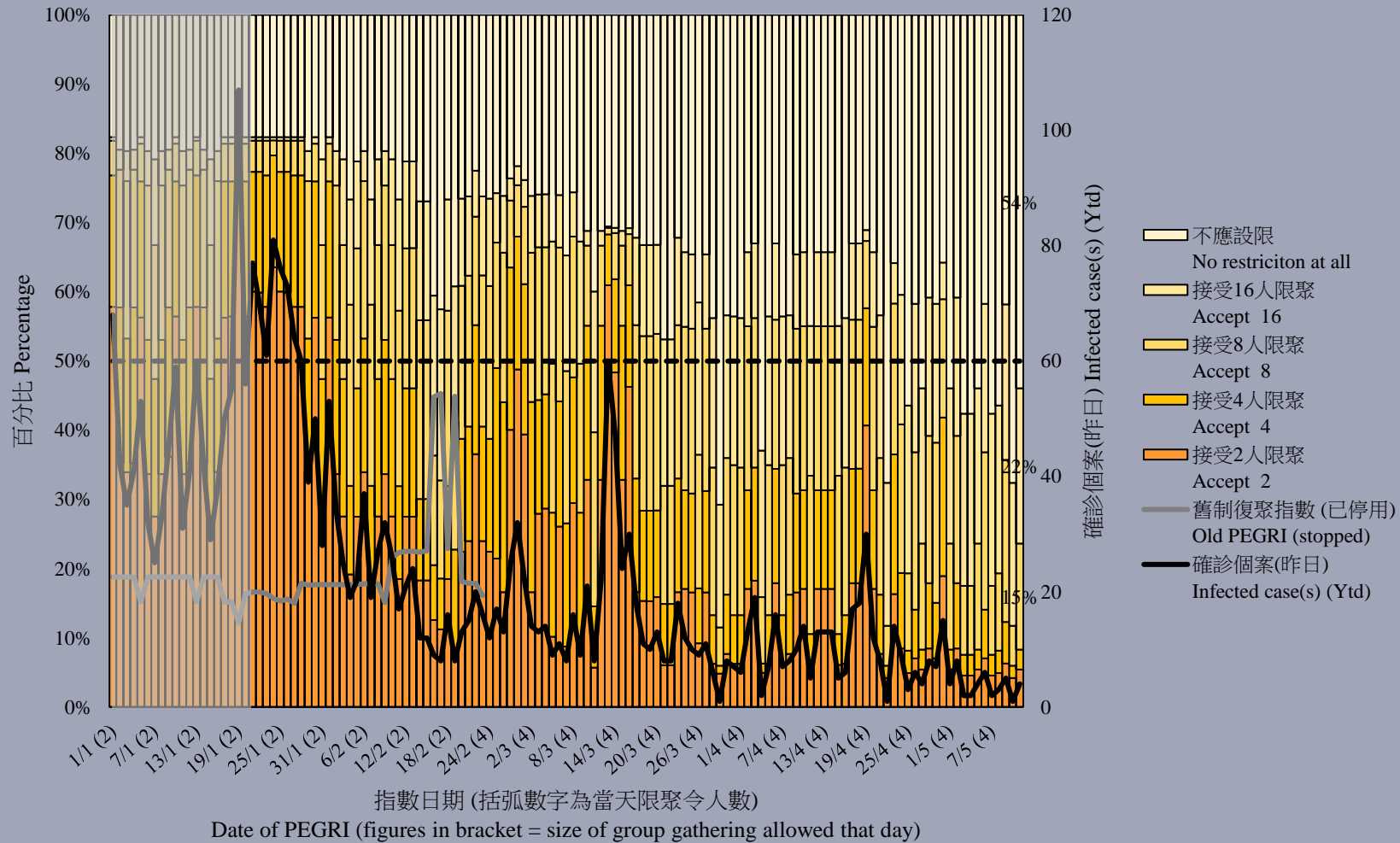
- **最新調查日期 Latest survey date: 16-21/4/2021 (N=6,330)**
- **上次調查日期 Last survey date: 22-29/3/2021 (N=6,806)**
- **上上次調查日期 Second last survey date: 8-22/3/2021 (N=6,210)**

意見題目	Opinion Questions
<p>你認為香港應否無條件全面撤銷「限聚令」？</p> <ul style="list-style-type: none">▪ 應該無條件撤銷「限聚令」▪ 不應該，應視乎疫情而定▪ 不知道／很難說 <p>[追問沒有選擇應該“無條件撤銷「限聚令」”者] 你認為每天新增確診個案數應是多少，才適合將「限聚令」訂於2人？ 你認為每天新增確診個案數應是多少，才適合將「限聚令」訂於4人？ 你認為每天新增確診個案數應是多少，才適合將「限聚令」訂於8人？ 你認為每天新增確診個案數應是多少，才適合將「限聚令」訂於16人？</p> <p>請於以下欄位列舉你認為合適的 [個案數 及 限聚人數] 組合……</p>	<p>Do you think the regulation prohibiting gatherings of more than a specific number of people in public places should be completely lifted unconditionally in Hong Kong?</p> <ul style="list-style-type: none">▪ Yes, the ban should be lifted unconditionally▪ No, it should depend on the epidemic situation▪ Don't know / hard to say <p>[For respondents NOT answering “Yes, the ban should be lifted unconditionally”] How many newly confirmed cases each day should there be before it would be appropriate to prohibit gatherings of more than 2 people? How many newly confirmed cases each day should there be before it would be appropriate to prohibit gatherings of more than 4 people? How many newly confirmed cases each day should there be before it would be appropriate to prohibit gatherings of more than 8 people? How many newly confirmed cases each day should there be before it would be appropriate to prohibit gatherings of more than 16 people?</p> <p>Please list combinations of [number of cases & number of people allowed in gatherings] that you think is appropriate in the field below:</p>

調查結果 - 限聚接受程度

Survey Result – Group Gathering Prohibition Acceptance Level

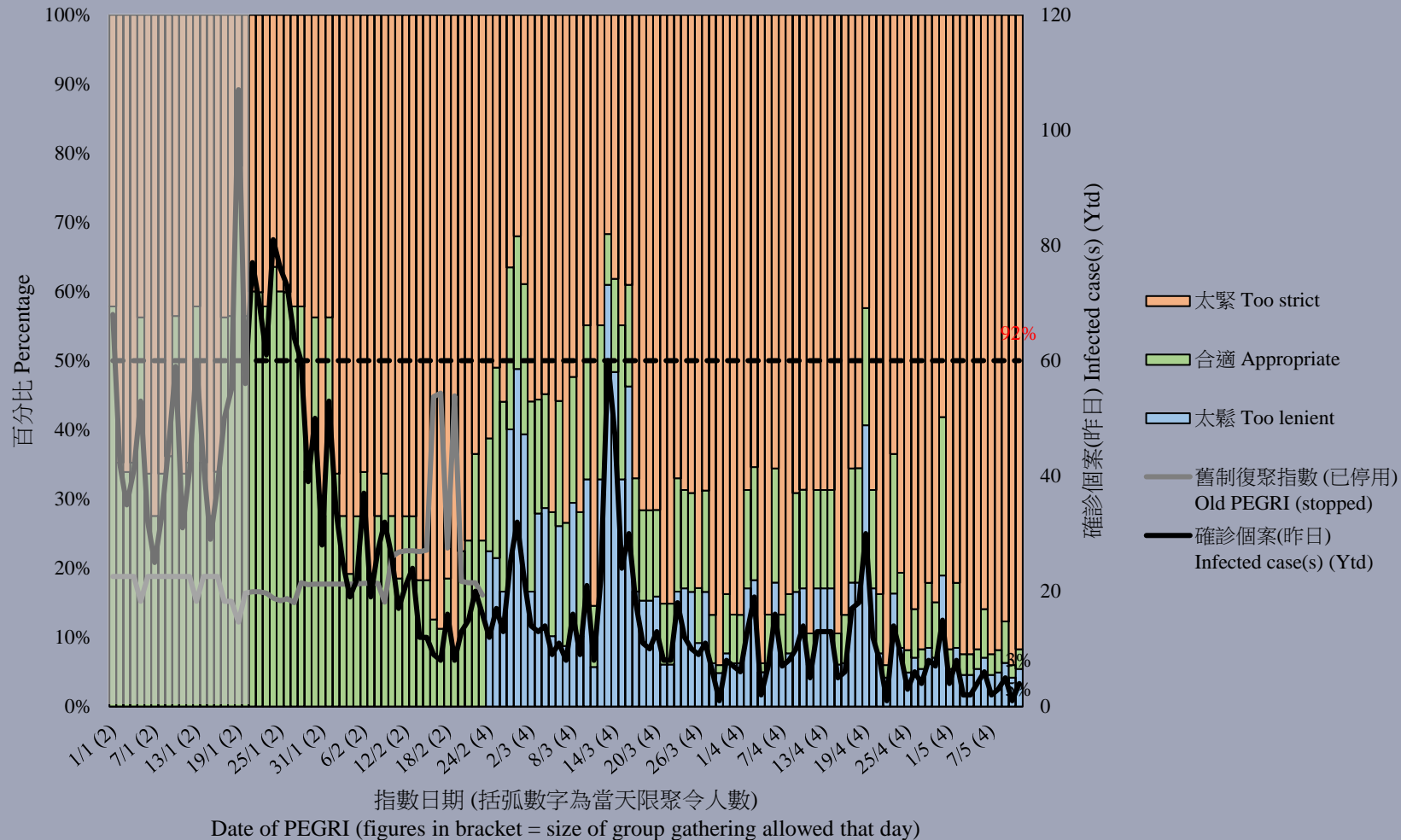
限聚接受程度 Group Gathering Prohibition Acceptance Level



調查結果 - 限聚接受程度

Survey Result – Group Gathering Prohibition Acceptance Level

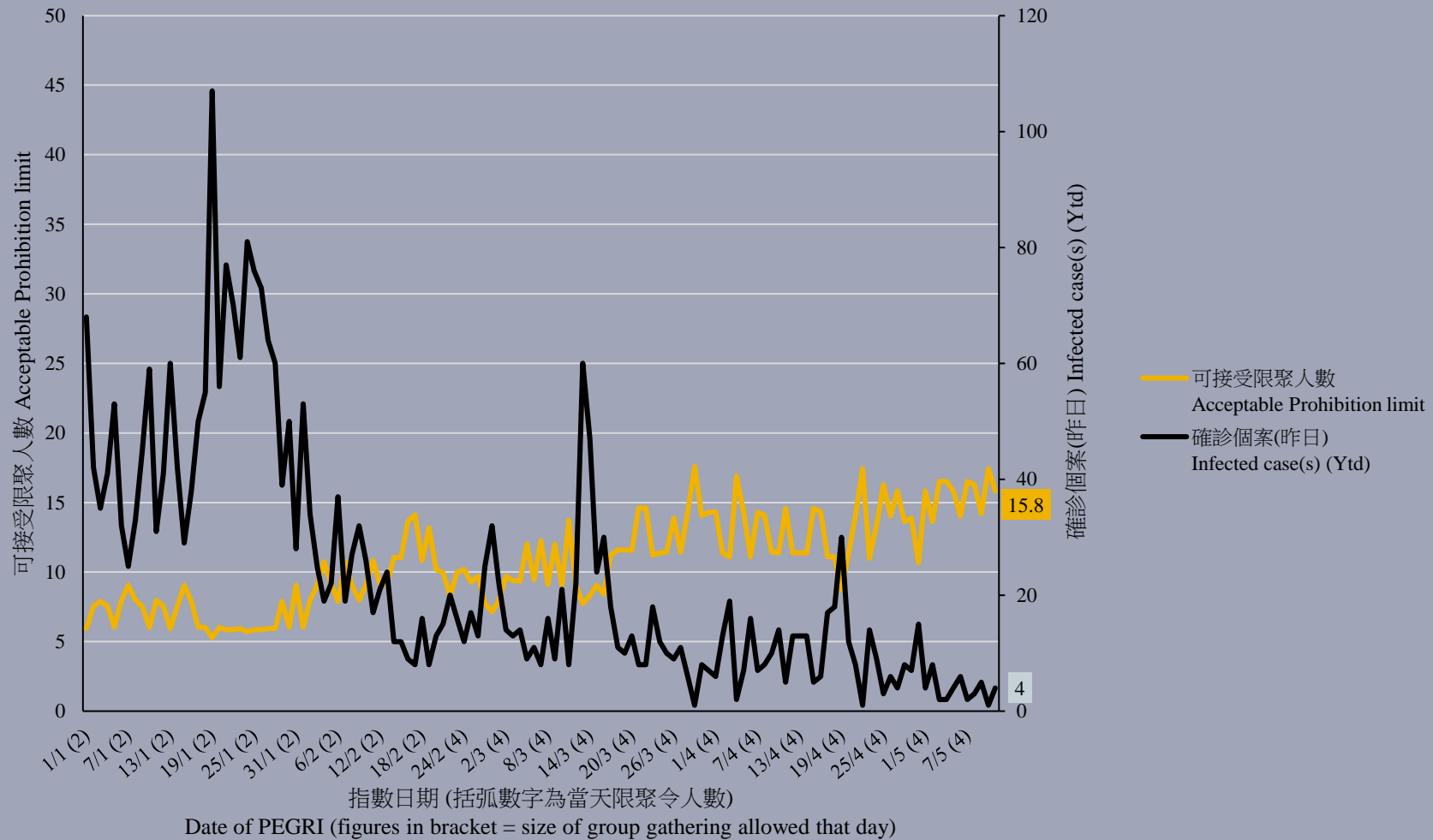
限聚接受程度 Group Gathering Prohibition Acceptance Level



調查結果 - 限聚指數

Survey Result - Group Gathering Prohibition Index

限聚指數 Group Gathering Prohibition Index



限聚指數 - 分析評論

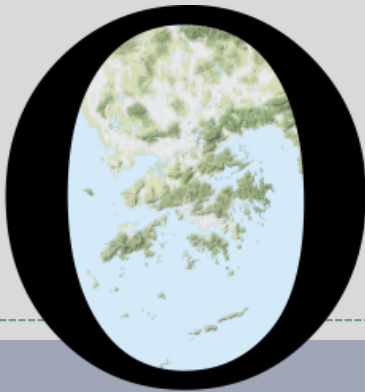
Group Gathering Prohibition Index – Commentary

14

香港教育中心商會副主席任偉豪指出，「認為限聚措施太緊的市民已連續多日保持在極高的水平，反映市民認為限聚措施是不必這麼緊的。政府已經連續多月呼籲市民注射疫苗，但市民注射疫苗的比例一直都是處於很低水平，只有不足百分之二十。我相信很多市民認為現時沒有必要去注射疫苗，是因為他們認為現時的防疫措施已十分足夠。可以思考的是，如果政府想多些市民注射疫苗，是否可以考慮進一步放寬防疫措施呢？」

Vice Chairman of The Hong Kong Chamber of Education Centres Yam Wai Ho observed, “The percentage of Hong Kong citizens who believe that the group gathering restrictions are too tight have been maintained at an extremely high level for many days, reflecting public’s belief that the restrictions need not be so tight. The government has been calling for people to get vaccinated for several months, but the proportion of people who have been vaccinated has stayed at a very low level, at less than 20%. I think many people do not think it is necessary to get vaccinated now because they think that the existing vaccination measures are sufficient enough. What can be considered is, if the government wants more people to be vaccinated, can it consider further relaxing the epidemic prevention measures?”

POP



HONG KONG PUBLIC OPINION PROGRAM

HONG KONG PUBLIC OPINION RESEARCH INSTITUTE

香港民意研究所 之 香港民意研究計劃

Latest Tracking Poll Results

May 11, 2021

Contact Information

16

- Date of survey: 3-7/5/2021
- Survey method: Random telephone survey conducted by real interviewers
- Target population: Cantonese-speaking Hong Kong residents aged 18 or above
- Sample size: 1,013 (including 506 landline and 507 mobile samples)
- Effective response rate: 55.5%
- Sampling error: Sampling error of percentages not more than +/-4%, that of net values not more than +/-7% and that of ratings not more than +/-2.3 at 95% conf. level
- Weighting method: Rim-weighted according to figures provided by the Census and Statistics Department. The gender-age distribution of the Hong Kong population came from “Mid-year population for 2020”, while the educational attainment (highest level attended) distribution and economic activity status distribution came from “Women and Men in Hong Kong - Key Statistics (2020 Edition)”.

Survey Topic

17

- Popularity of Chief Executive
- Popularity of Principal Officials

Survey Result - Popularity of Chief Executive

18

● Popularity of Chief Executive

		19-22/4/2021	3-7/5/2021	Change	Record
CE Carrie Lam	Rating	32.0	30.4	▼1.6	Record low since Mar. 2021
	Vote of confidence	18%	17%	▼1%	Record low since Apr. 2020
	Vote of no confidence	68%	71%	▲3%	Record high since Mar. 2021
	Net approval rate	-50%	-54%	▼5%	Record low since Oct. 2020

- Our latest survey shows that the popularity rating of CE Carrie Lam is 30.4 marks, with 42% of respondents giving her 0 mark. Her approval rate is 17%, disapproval rate 71%, giving a net popularity of negative 54 percentage points. All popularity figures have not changed much from half a month ago.

Survey Topic

19

- Popularity of Chief Executive
- Popularity of Principal Officials

Survey Result - Popularity of Secretaries of Departments

20

• Secretaries of Departments

		7-9/4/2021	3-7/5/2021	Change	Record
Chief Secretary for Administration Matthew Cheung	Rating	32.6	30.3	▼2.4	Record low since Dec. 2020
	Net approval rate	-20%	-30%	▼10% *	Record low since Feb. 2021
Financial Secretary Paul Chan	Rating	35.8	35.1	▼0.7	Record low since Mar. 2021
	Net approval rate	-10%	-18%	▼8%	Record low since Mar. 2021
Secretary for Justice Teresa Cheng	Rating	22.7	25.0	▲2.3	Record high since Jun. 2019
	Net approval rate	-47%	-44%	▲4%	Record high since Mar. 2021

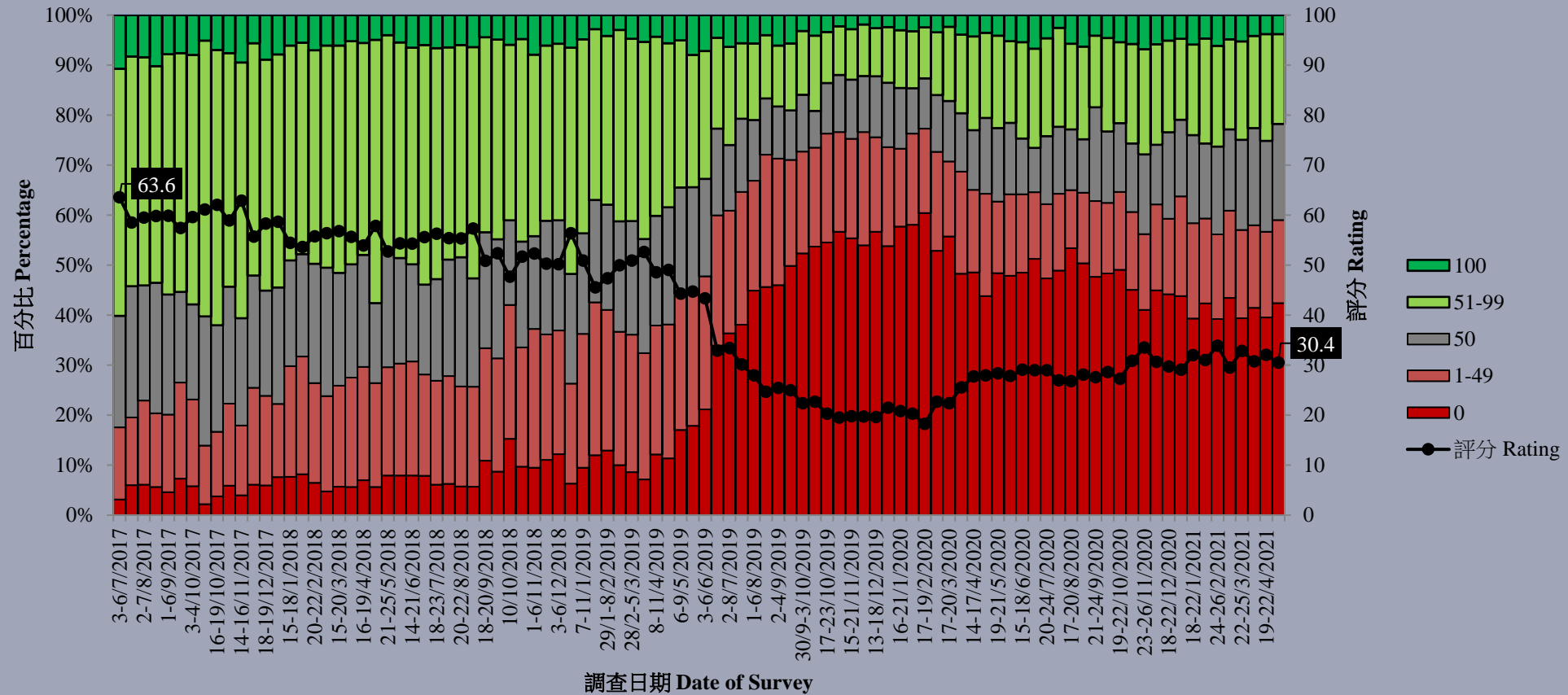
- The net popularity of CS Matthew Cheung is negative 30 percentage points, registering a significant decrease of 10 percentage points from a month ago.

* Significant change

Survey Result - Popularity of Chief Executive

21

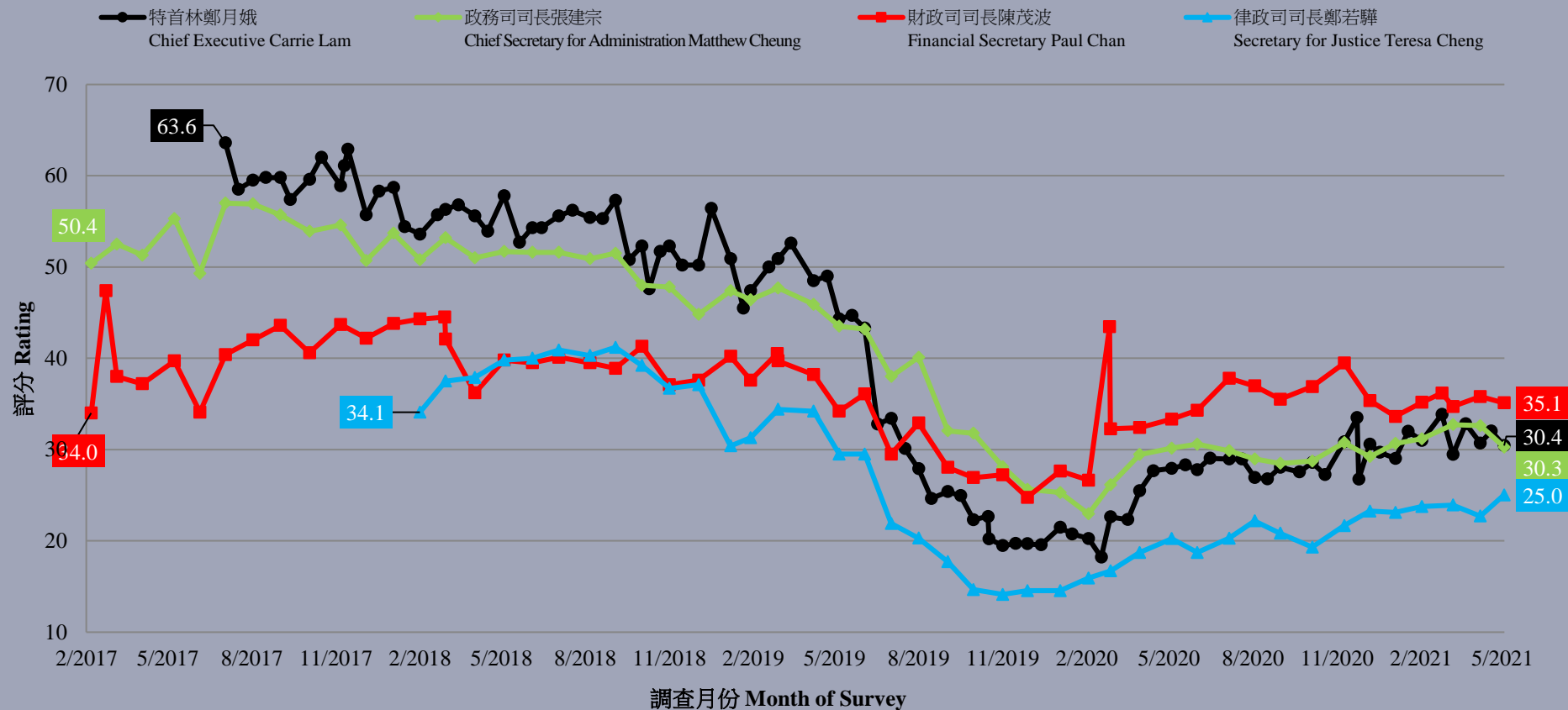
特首林鄭月娥評分 (按次計算)
Rating for Chief Executive Carrie Lam (Per Poll)
(7/2017 – 5/2021)



Survey Result - Popularity of CE and Secretaries of Departments

25

特首及各司長評分 - 綜合圖表 (按次計算)
Ratings of Chief Executive and Secretaries of Departments - Combined (per poll)
(2/2017 - 5/2021)

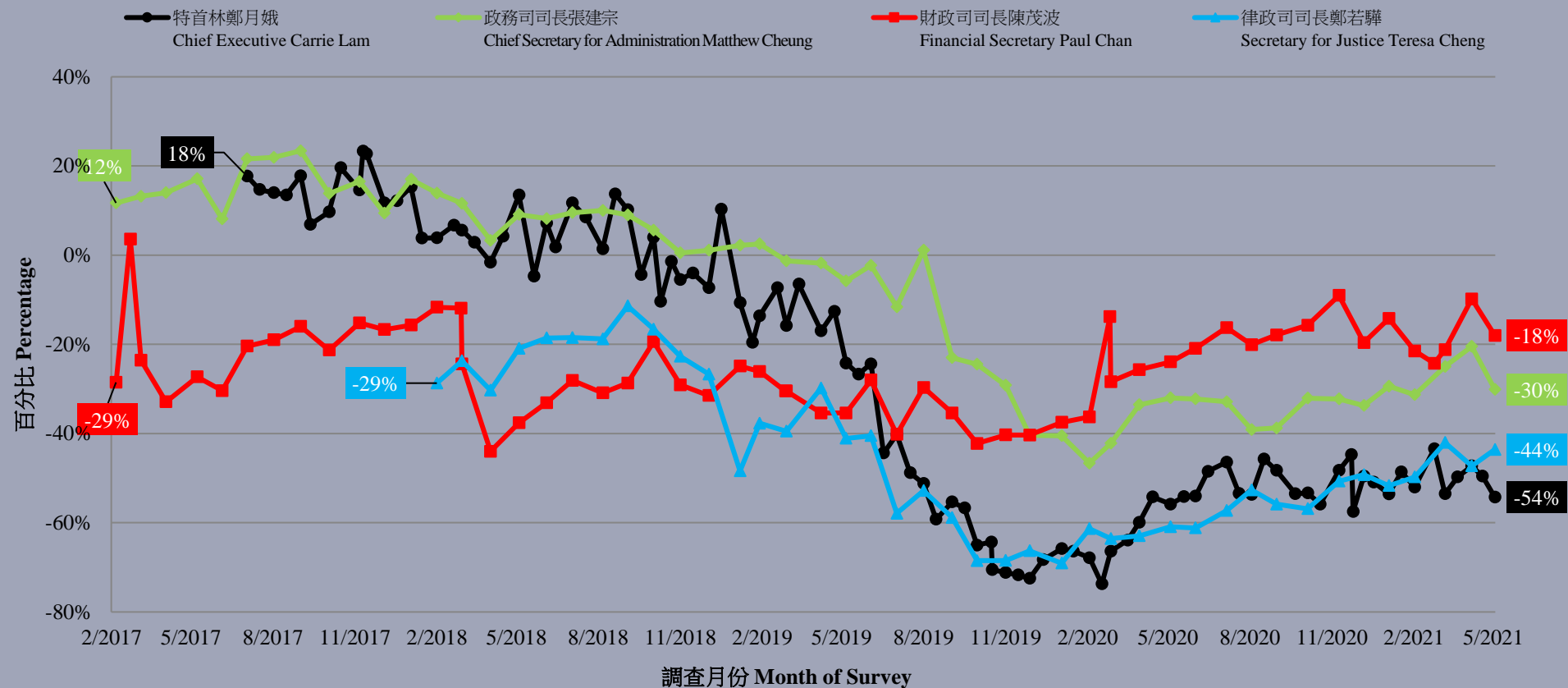


Survey Result - Popularity of CE and Secretaries of Departments

26

特首及各司長支持率淨值 - 綜合圖表 (按次計算)

Net approval rates of CE and Secretaries of Departments - Combined (per poll) (2/2017 – 5/2021)



Survey Result - Popularity of Directors of Bureaux

27

• Directors of Bureaux - Net approval rate

	8-12/3/2021	3-7/5/2021	Change	Record
Secretary for the Environment Wong Kam-sing	-4%	2%	▲6%	Record high since May. 2020
Secretary for Innovation and Technology Alfred Sit	-4%	-5%	▼1%	Record low since Jan. 2021
Secretary for Financial Services and the Treasury Christopher Hui	1%	-6%	▼7%	Record low since Jan. 2021
Secretary for Development Michael Wong	-2%	-7%	▼5%	Record low since Sept. 2020
Secretary for Home Affairs Caspar Tsui	-8%	-9%	▼1%	Record low since Jan. 2021
Secretary for Commerce and Economic Development Edward Yau	-10%	-9%	▲1%	Record high since Dec. 2019
Secretary for Transport and Housing Frank Chan	-24%	-11%	▲13% *	Record high since Aug. 2019
Secretary for Labour and Welfare Law Chi-kwong	-11%	-12%	▼1%	Record low since Sept. 2020
Secretary for the Civil Service Patrick Nip	-17%	-15%	▲1%	Record high since May 2020
Secretary for Food and Health Sophia Chan	-26%	-21%	▲5%	Record high since Jan. 2021
Secretary for Constitutional and Mainland Affairs Erick Tsang	-15%	-22%	▼8%	Record low since Sept. 2020
Secretary for Security John Lee	-24%	-24%	--	--
Secretary for Education Kevin Yeung	-43%	-44%	▼2%	Record low since Jul. 2020

* Significant change

Survey Result - Popularity of Directors of Bureaux

28

各局長假想投票結果 (支持率淨值) - 綜合圖表
 Hypothetical Voting of Directors of Bureau (Net Approval Rate) - Combined Charts

