

POP



HONG KONG PUBLIC OPINION PROGRAM

HONG KONG PUBLIC OPINION RESEARCH INSTITUTE

香港民意研究所 之 香港民意研究計劃

Latest Tracking Poll Results

April 13, 2021

Contact Information

2

- Date of survey: 7-9/4/2021
- Survey method: Random telephone survey conducted by real interviewers
- Target population: Cantonese-speaking Hong Kong residents aged 18+
- Sample size: 1,003 (including 508 landline and 495 mobile samples)
- Effective response rate: 50.1%
- Sampling error: Sampling error of percentages not more than +/-4%, that of net values not more than +/-7% and that of ratings not more than +/-2.6 at 95% conf. level
- Weighting method: Rim-weighted according to figures provided by the Census and Statistics Department. The gender-age distribution of the Hong Kong population came from “Mid-year population for 2019”, while the educational attainment (highest level attended) distribution and economic activity status distribution came from “Women and Men in Hong Kong - Key Statistics (2019 Edition)”.

Survey Topic

3

- Popularity of Chief Executive
- Popularity of Secretaries of Departments
- Core Social Indicators
 - Degree of freedom
 - Degree of stability
 - Degree of prosperity
 - Compliance with the rule of law
 - Degree of democracy

Survey Result - Popularity of Chief Executive

4

• Popularity of Chief Executive

		22-25/3/2021	7-9/4/2021	Change	Record
CE Carrie Lam	Rating	32.8	30.7	▼2.1	Record low since Mar. 2021
	Vote of confidence	19%	20%	▲2%	Record high since Feb. 2021
	Vote of no confidence	68%	67%	▼1%	Record low since Feb. 2021
	Net approval rate	-50%	-47%	▲3%	Record high since Feb. 2021

- Our latest survey shows that the popularity rating of CE Carrie Lam now stands at 30.7 marks, with 41% of respondents giving her 0 mark. Her approval rate is 20%, disapproval rate 67%, giving a net popularity of negative 47 percentage points. All popularity figures have not changed much from half a month ago.

* Significant change

Survey Topic

5

- Popularity of Chief Executive
- Popularity of Secretaries of Departments
- Core Social Indicators
 - Degree of freedom
 - Degree of stability
 - Degree of prosperity
 - Compliance with the rule of law
 - Degree of democracy

Survey Result - Popularity of Secretaries of Departments

6

• Secretaries of Departments

		8-12/3/2021	7-9/4/2021	Change	Record
Chief Secretary for Administration Matthew Cheung	Rating	32.7	32.6	▼0.1	Record low since Feb. 2021
	Net approval rate	-25%	-20%	▲4%	Record high since Aug. 2019
Financial Secretary Paul Chan	Rating	34.7	35.8	▲1.1	Record high since Nov. 2020
	Net approval rate	-21%	-10%	▲11% *	Record high since Nov. 2020
Secretary for Justice Teresa Cheng	Rating	23.9	22.7	▼1.2	Record low since Nov. 2020
	Net approval rate	-42%	-47%	▼5%	Record low since Feb. 2021

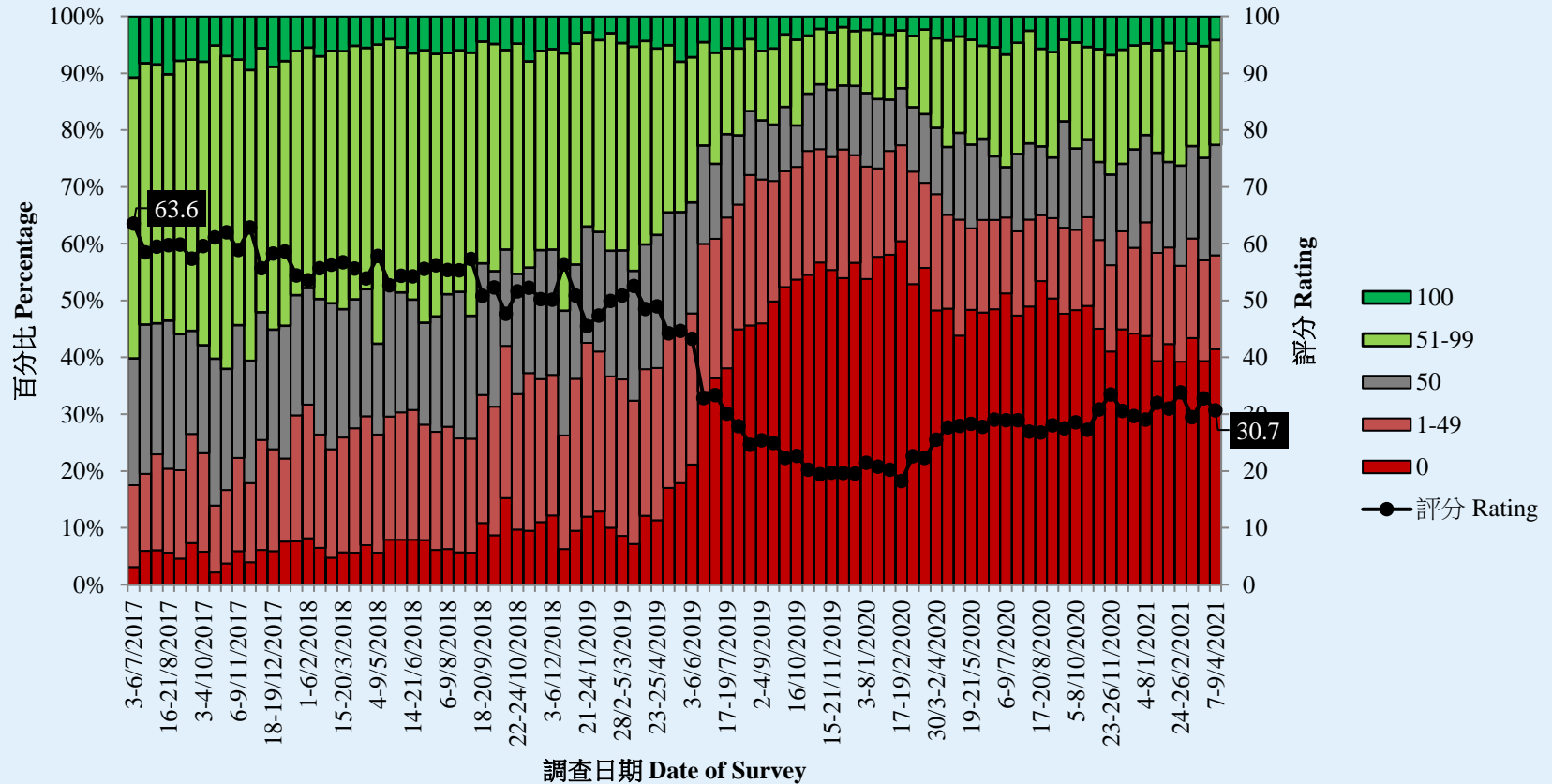
- The net popularity of FS Paul Chan is negative 10 percentage points, registering a significant increase of 11 percentage points from a month ago.

* Significant change

Survey Result - Popularity of Chief Executive

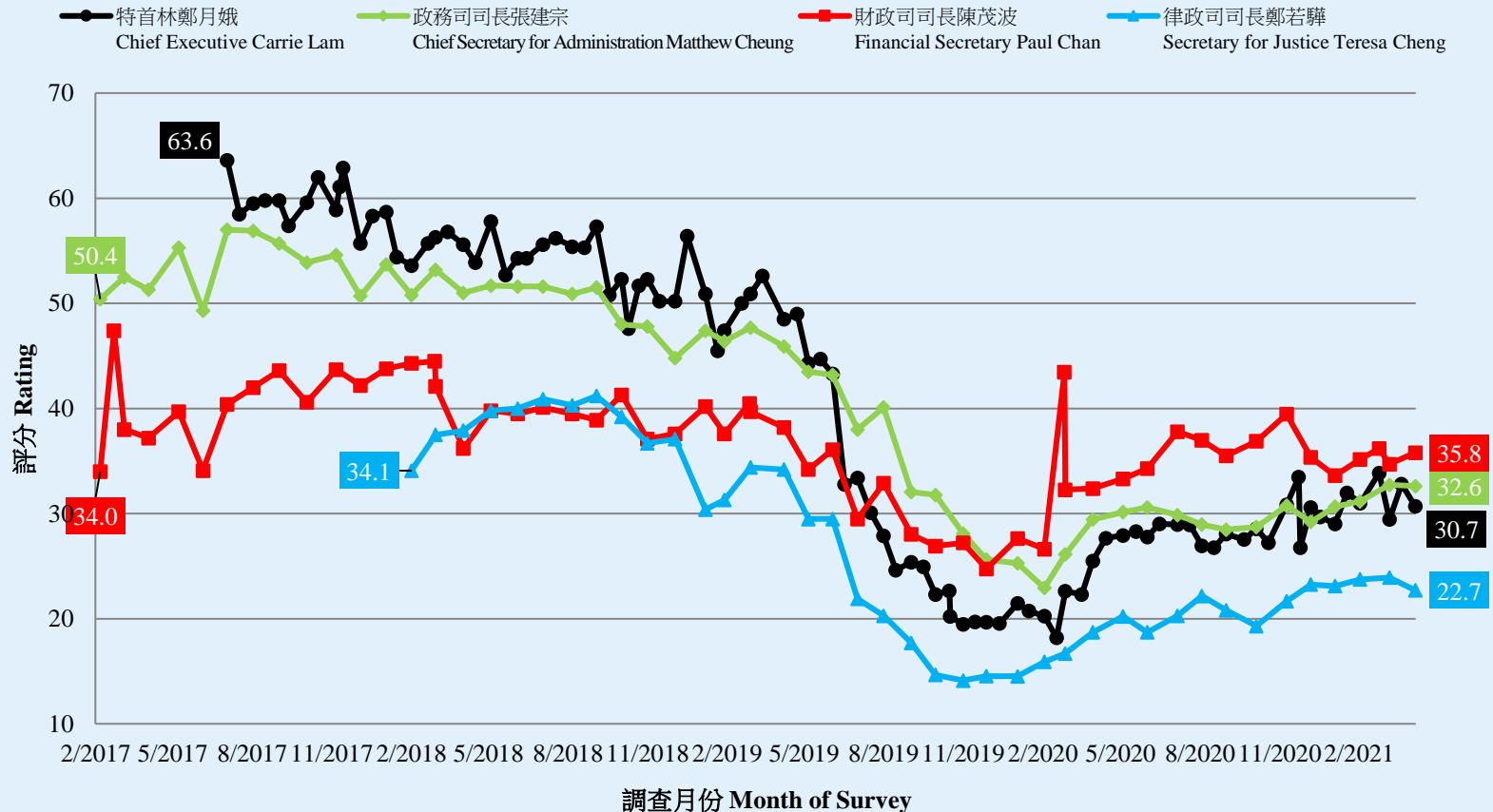
7

特首林鄭月娥評分 (按次計算)
Rating for Chief Executive Carrie Lam (Per Poll)
(7/2017 – 4/2021)



Survey Result - Popularity of CE and Secretaries of Departments

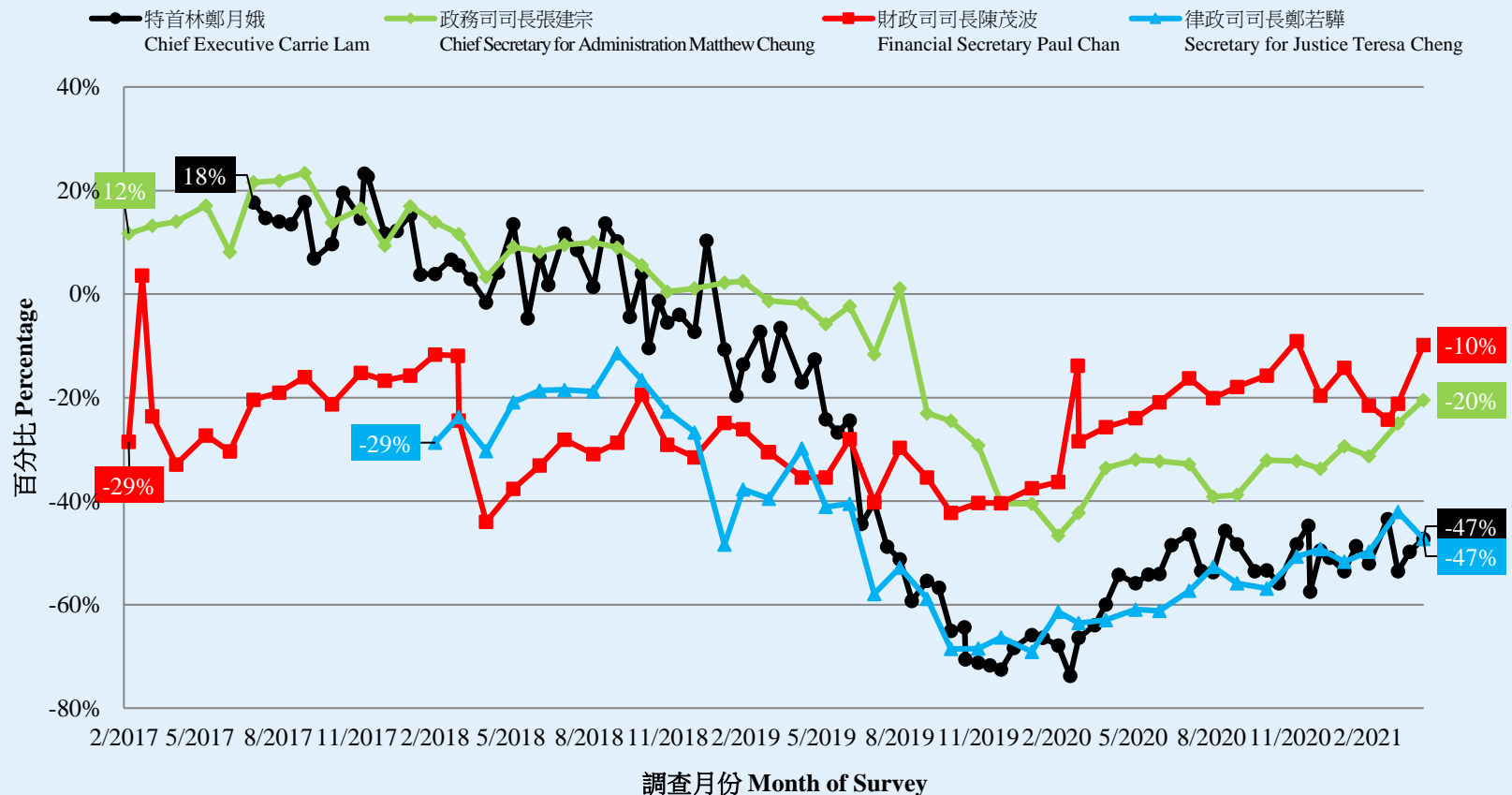
特首及各司長評分 - 綜合圖表 (按次計算)
 Ratings of Chief Executive and Secretaries of Departments - Combined (per poll)
 (2/2017 - 4/2021)



Survey Result - Popularity of CE and Secretaries of Departments

12

特首及各司長支持率淨值 - 綜合圖表 (按次計算)
 Net approval rates of CE and Secretaries of Departments - Combined (per poll)
 (2/2017 – 4/2021)



Survey Topic

13

- Popularity of Chief Executive
- Popularity of Secretaries of Departments
- **Core Social Indicators**
 - Degree of freedom
 - Degree of stability
 - Degree of prosperity
 - Compliance with the rule of law
 - Degree of democracy

Survey result - Social Indicators

14

● Five Core Social Indicators

	8-12/3/2021	7-9/4/2021	Change	Record
Freedom	4.70	4.77	▲0.07	Record high since Feb. 2021
Stability	4.26	4.76	▲0.50 *	Record high since Feb. 2021
Prosperity	4.26	4.73	▲0.47 *	Record high since Feb. 2021
Rule of law	3.92	4.40	▲0.48 *	Record high since Feb. 2021
Democracy	3.59	3.68	▲0.09	Record high since Feb. 2021

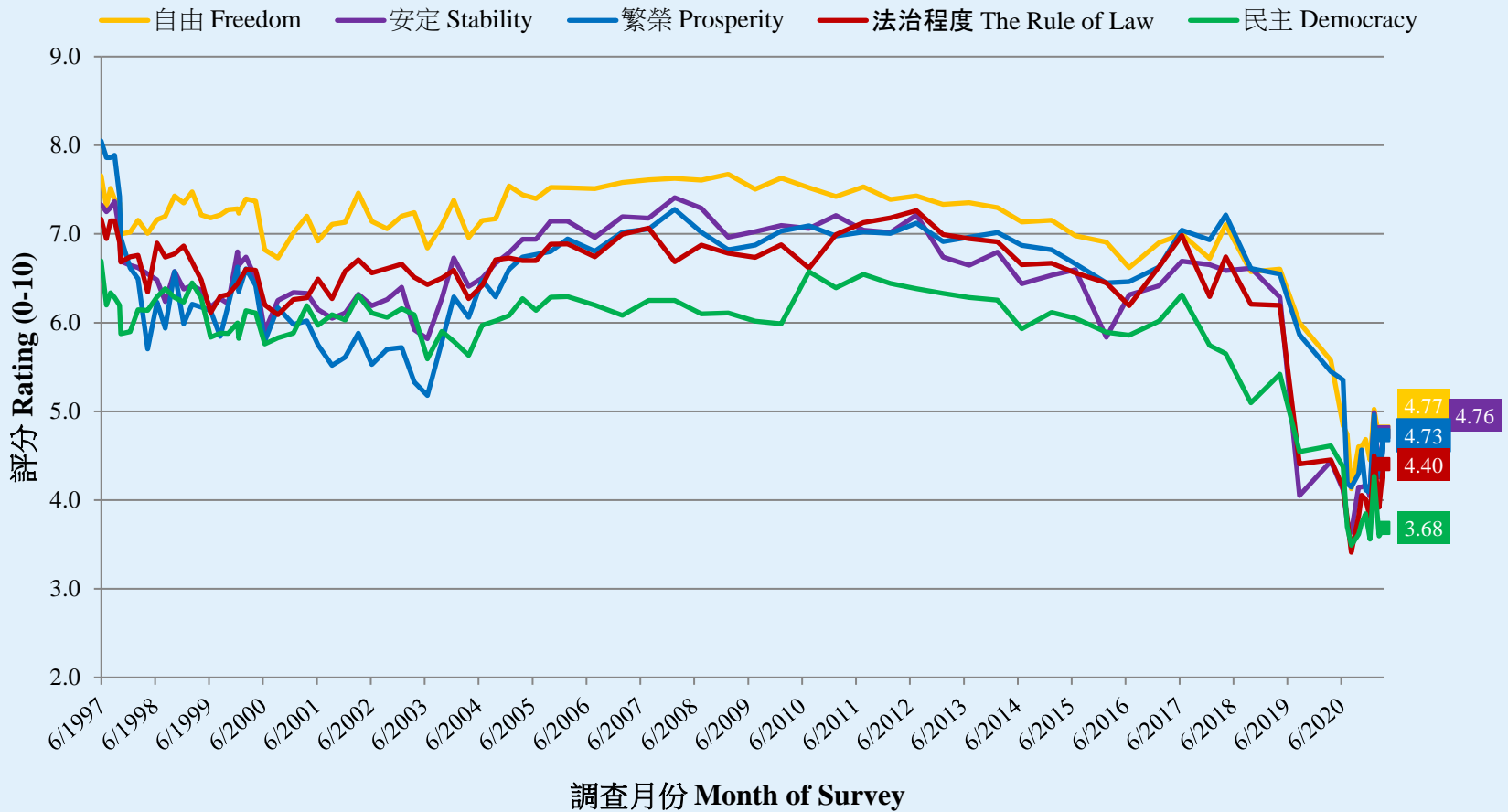
- On a scale of 0 to 10, people's ratings on the five core social indicators ranked from the highest to the lowest continue to be "freedom", "stability", "prosperity", "rule of law" and "democracy". Their scores are 4.77, 4.76, 4.73, 4.40 and 3.68 respectively. Compared with a month ago, "stability", "prosperity" and "rule of law" indicators have rebounded significantly, up by 0.47 to 0.50.

* Significant change

Survey result - Social Indicators

15

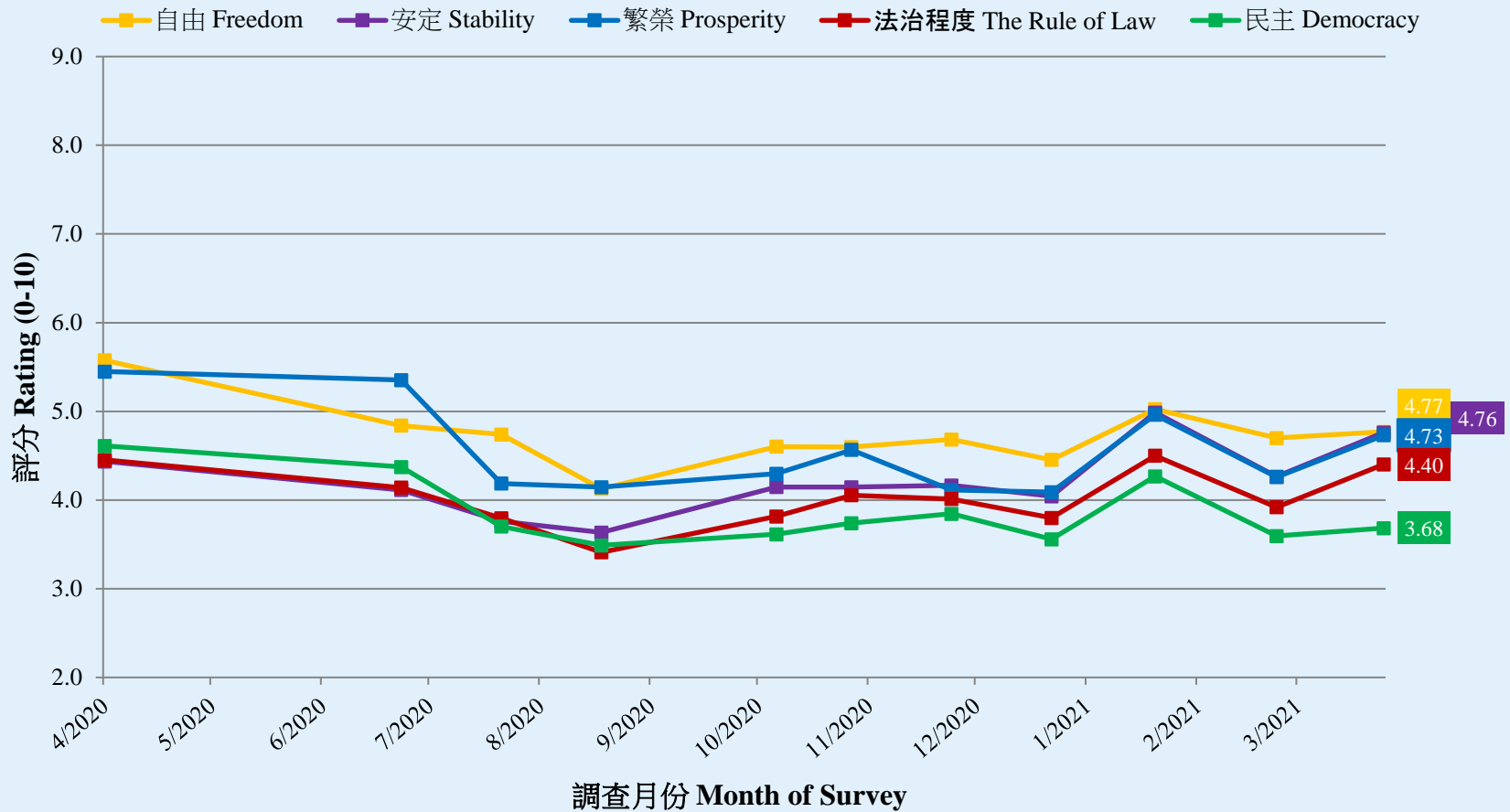
核心社會指標走勢圖表 (按次計算)
Trend of Core Social Indicators Chart (Per Poll)
(6/1997 – 4/2021)



Survey result - Social Indicators

16

核心社會指標走勢圖表 (按次計算)
Trend of Core Social Indicators Chart (Per Poll)
(4/2020 – 4/2021)



POP



HONG KONG PUBLIC OPINION PROGRAM

HONG KONG PUBLIC OPINION RESEARCH INSTITUTE

香港民意研究所 之 香港民意研究計劃

Community Democracy Project -

Community Health Module

Latest Results

April 13, 2021

Contact Information - Community Health Module

19

	HKPOP Panel	
Date of survey	March 29, 3pm – April 12, 3pm	
Survey method	Online survey	
Target population	Hong Kong residents aged 12+	
	Representative Panel	Volunteer Panel
Total sample size	986	9,159
Response rate	11.3%	10.7%
Sampling error	Sampling error of percentages at +/-3% at 95% confidence level	Sampling error of percentages at +/-1% at 95% confidence level
Weighting method	The figures are rim-weighted according to 1) gender-age distribution of Hong Kong population and by District Councils population figures from Census and Statistics Department; 2) Voting results of District Councils Election from Registration and Electoral Office; 3) rating distribution of Chief Executive from regular tracking surveys.	

Survey Result - Community Health Module

20

- **Latest survey period: 29/3-12/4/2021** (*Representative Panel N= 980 Volunteer Panel N= 9,125*)
- **Last survey period: 22-29/3/2021** (*Representative Panel N= 756 Volunteer Panel N= 6,036*)
- **Second last survey period: 8-22/3/2021** (*Representative Panel N= 677 Volunteer Panel N= 5,521*)

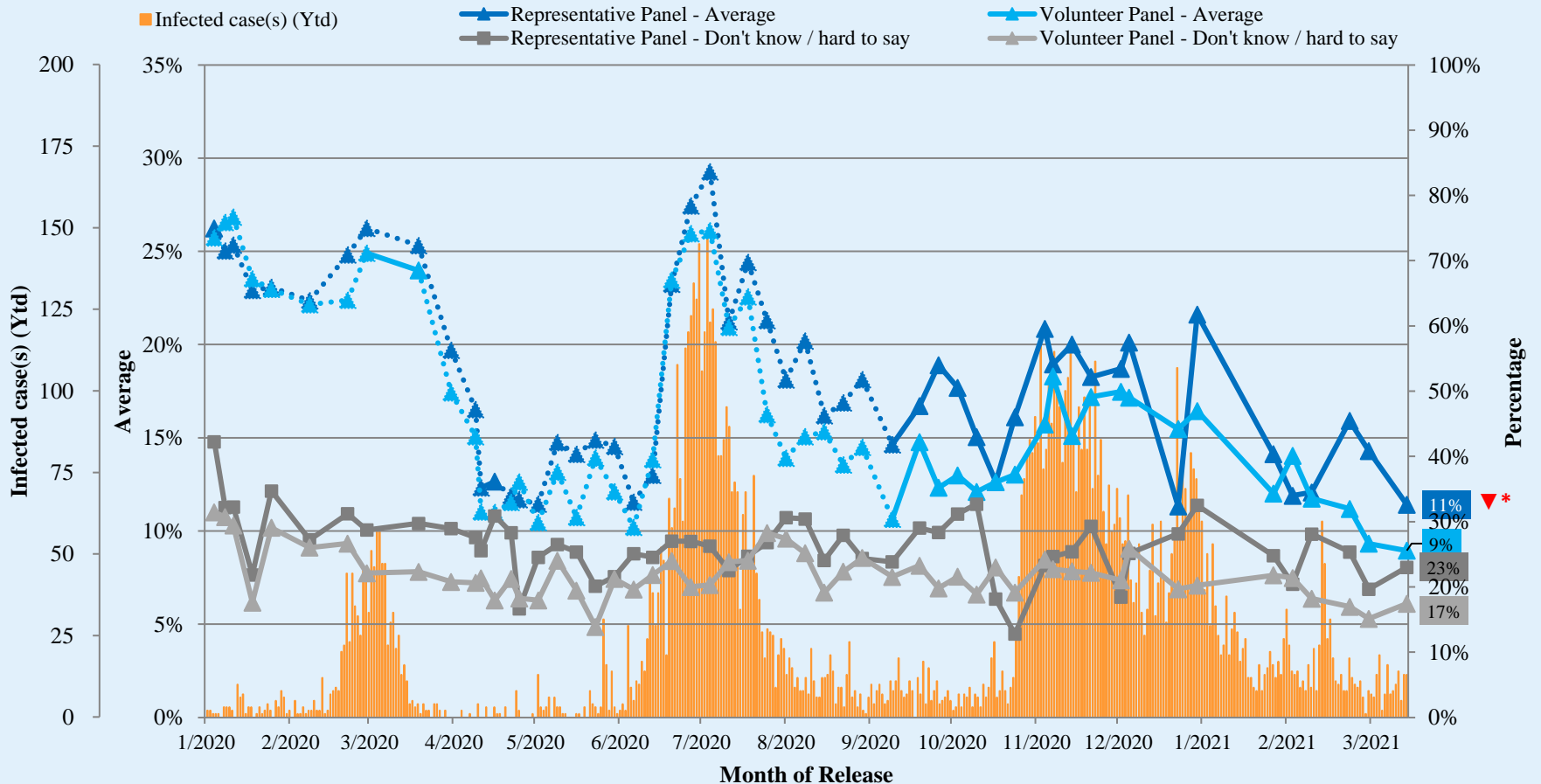
Opinion Question [^]		Representative Panel (N=980)		Volunteer Panel (N=9,125)	
		Don't know / hard to say	Average	Don't know / hard to say	Average
Q1 How likely do you think it is that you will contract novel coronavirus pneumonia over the next one month? [Logarithmic Scale]	Latest	23%	11% ▼*	17%	9%
	Last	20%	14%	15%	9%
	Second Last	25%	16%	17%	11%

[^] Answer options included: 0-10 rating scale, others and don't know / hard to say. Answer options changed from linear scale to logarithmic scale since Oct 2020.

* Significant change

Survey Result - Community Health Module

Assessment of the public's expected chance of COVID-19 infection



^ Answer options included: 0-10 rating scale, others and don't know / hard to say. Answer options changed from linear scale to logarithmic scale since Oct 2020.

* Significant change

Survey Result - Community Health Module

22

- **Latest survey period: 29/3-12/4/2021** (Representative Panel N= 986 Volunteer Panel N= 9,147)
- **Last survey period: 22-29/3/2021** (Representative Panel N=756 Volunteer Panel N=6,045)
- **Second last survey period: 8-22/3/2021** (Representative Panel N=676 Volunteer Panel N=5,528)

Opinion Question [^]		Representative Panel (N=986)				Volunteer Panel (N=9,147)			
		Satisfied	Half-half	Dissatisfied	Mean [†]	Satisfied	Half-half	Dissatisfied	Mean [†]
Q2 How satisfied or dissatisfied are you with the government's performance in handling novel coronavirus pneumonia?	Latest	22%	22%	54% ▼*	2.3 ▲*	23% ▲*	11% ▼*	65%	2.1 ▲*
	Last	20%	20%	61%	2.1	20%	15%	65%	2.1
	Second Last	23%	19%	59%	2.2	19%	15%	65%	2.1

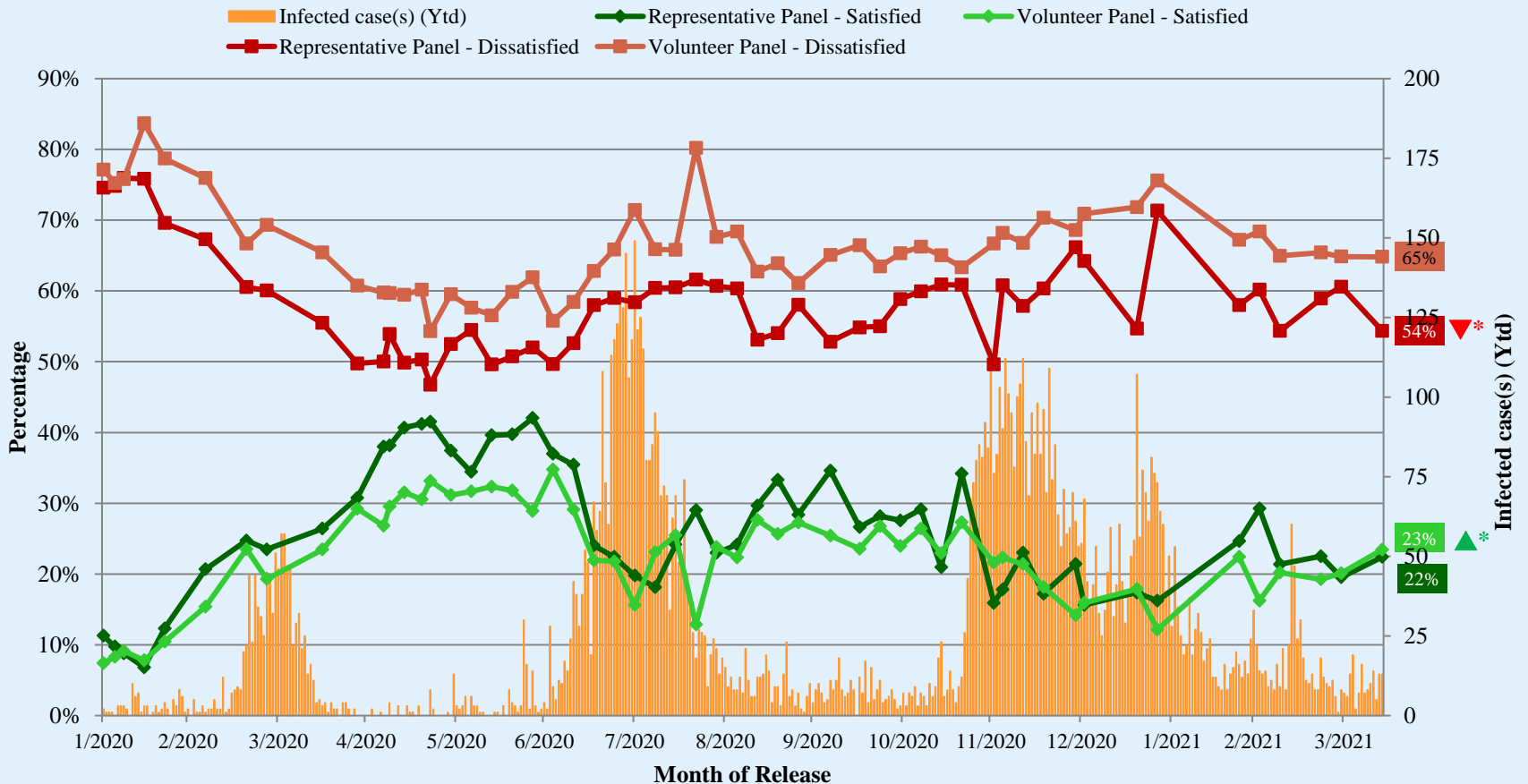
[^] Answer options included: very much satisfied, somewhat satisfied, half-half, somewhat dissatisfied, very much dissatisfied and don't know / hard to say

[†] The mean value is calculated by quantifying all individual responses into 1, 2, 3, 4, 5 marks according to their degree of positive level, where 1 is the lowest and 5 the highest, and then calculate the sample mean.

* Significant change

Survey Result - Community Health Module

Appraisal of HK Government's performance in handling novel coronavirus pneumonia



^ Answer options included: very much satisfied, somewhat satisfied, half-half, somewhat dissatisfied, very much dissatisfied and don't know / hard to say * Significant change

POP



HONG KONG PUBLIC OPINION PROGRAM

HONG KONG PUBLIC OPINION RESEARCH INSTITUTE

香港民意研究所 之 香港民意研究計劃

限聚指數

Group Gathering Prohibition Index

13/4/2021

樣本資料 - 限聚指數基準調查

Contact Information - Group Gathering Prohibition Index Benchmark Survey

25

	香港民研意見群組成員 HKPOP Panel
調查日期 Survey date	22/3 15:00 – 29/3 15:00
調查方法 Survey method	以電郵接觸群組成員，並於網上完成調查 Online survey
訪問對象 Target population	十二歲或以上的香港市民 Hong Kong residents aged 12+
總成功樣本 Total sample size	6,806
回應比率 Response rate	7.2%
抽樣誤差 Sampling error	95% 置信水平，百分比誤差 $\pm 1\%$ Sampling error of percentages at $\pm 1\%$ at 95% confidence level
加權方法 Weighting method	按照1) 政府統計處提供的全港人口年齡及性別分佈統計數字、各區議會人口數字；2) 選舉事務處提供的區議會選舉結果；3) 常規調查中的特首評分分佈數字，以「反覆多重加權法」作出調整。 The figures are rim-weighted according to 1) gender-age distribution of Hong Kong population and by District Councils population figures from Census and Statistics Department; 2) Voting results of District Councils Election from Registration and Electoral Office; 3) rating distribution of Chief Executive from regular tracking surveys.

限聚指數

Group Gathering Prohibition Index

26

- 最新調查日期 **Latest survey date: 22-29/3/2021 (N=6,806)**
- 上次調查日期 **Last survey date: 8-22/3/2021 (N=6,210)**
- 上上次調查日期 **Second last survey date: 1-8/3/2021 (N=5,606)**

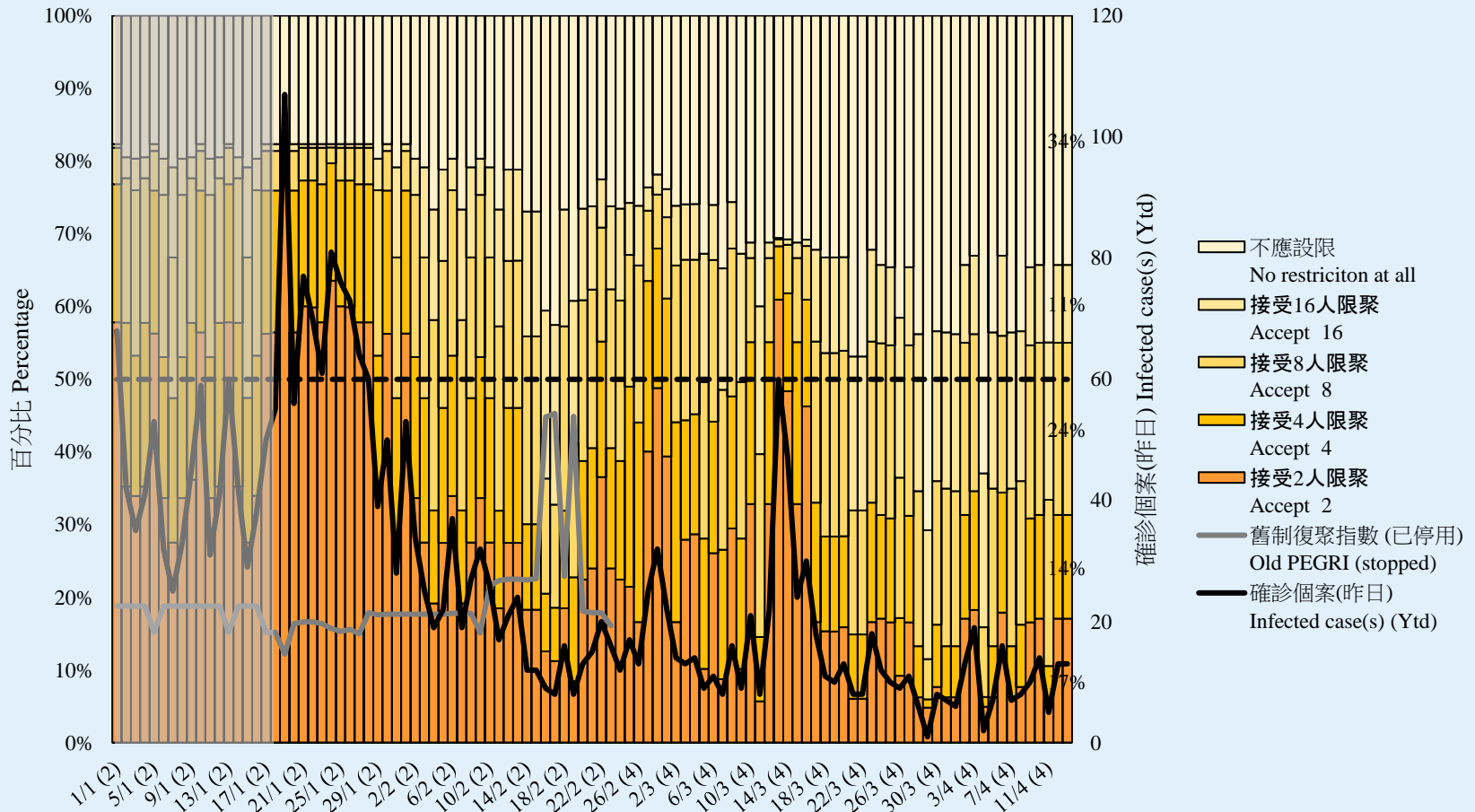
意見題目	Opinion Questions
<p>你認為香港應否無條件全面撤銷「限聚令」？</p> <ul style="list-style-type: none">▪ 應該無條件撤銷「限聚令」▪ 不應該，應視乎疫情而定▪ 不知道／很難說 <p>[追問沒有選擇應該“無條件撤銷「限聚令」”者] 你認為每天新增確診個案數應是多少，才適合將「限聚令」訂於2人？ 你認為每天新增確診個案數應是多少，才適合將「限聚令」訂於4人？ 你認為每天新增確診個案數應是多少，才適合將「限聚令」訂於8人？ 你認為每天新增確診個案數應是多少，才適合將「限聚令」訂於16人？</p> <p>請於以下欄位列舉你認為合適的 [個案數 及 限聚人數] 組合……</p>	<p>Do you think the regulation prohibiting gatherings of more than a specific number of people in public places should be completely lifted unconditionally in Hong Kong?</p> <ul style="list-style-type: none">▪ Yes, the ban should be lifted unconditionally▪ No, it should depend on the epidemic situation▪ Don't know / hard to say <p>[For respondents NOT answering “Yes, the ban should be lifted unconditionally”] How many newly confirmed cases each day should there be before it would be appropriate to prohibit gatherings of more than 2 people? How many newly confirmed cases each day should there be before it would be appropriate to prohibit gatherings of more than 4 people? How many newly confirmed cases each day should there be before it would be appropriate to prohibit gatherings of more than 8 people? How many newly confirmed cases each day should there be before it would be appropriate to prohibit gatherings of more than 16 people?</p> <p>Please list combinations of [number of cases & number of people allowed in gatherings] that you think is appropriate in the field below:</p>

調查結果 - 限聚接受程度

Survey Result – Group Gathering Prohibition Acceptance Level

27

限聚接受程度 Group Gathering Prohibition Acceptance Level



指數日期 (括弧數字為當天限聚令人數)

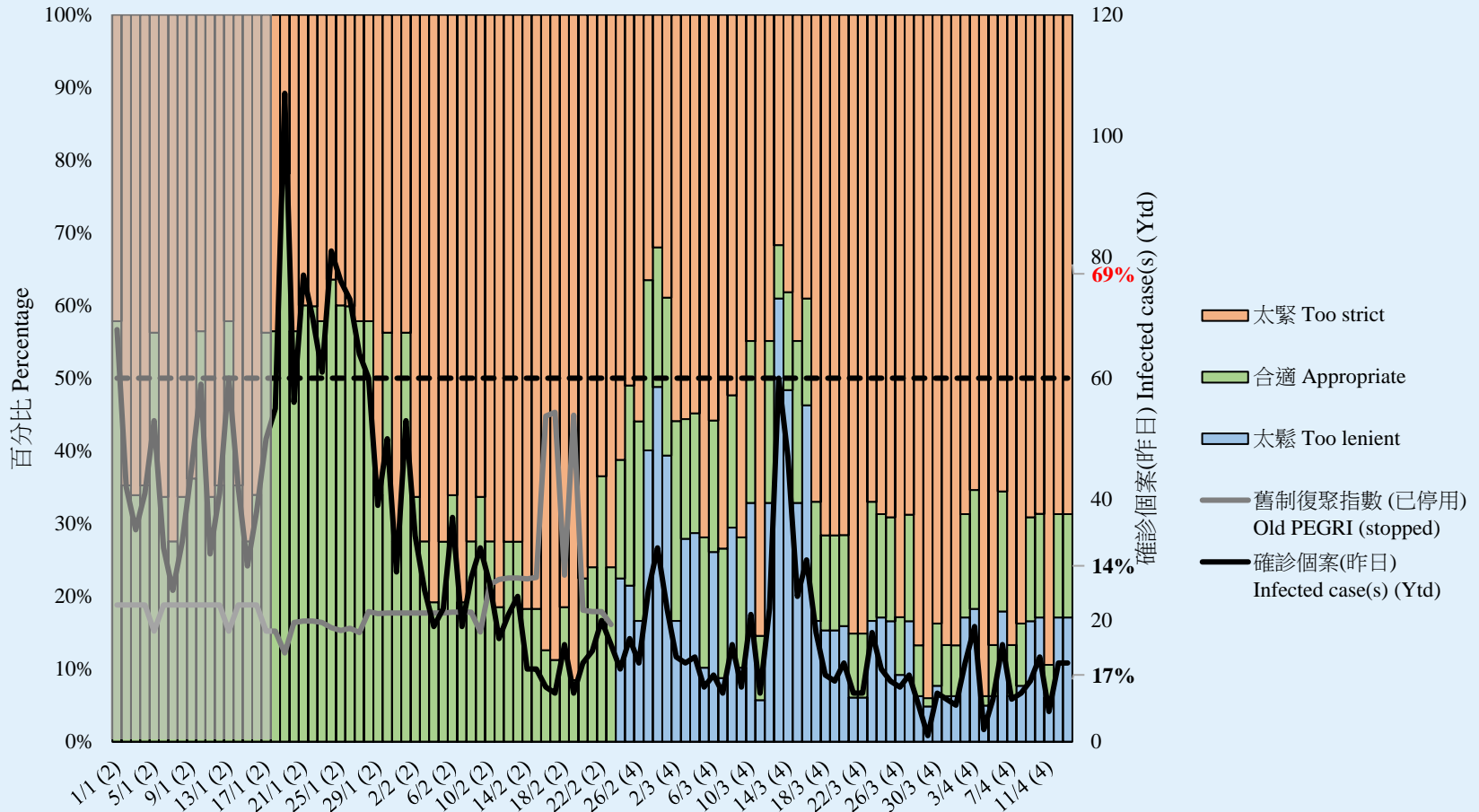
Date of PEGRI (figures in bracket = size of group gathering allowed that day)

調查結果 - 限聚接受程度

Survey Result - Group Gathering Prohibition Acceptance Level

28

限聚接受程度 Group Gathering Prohibition Acceptance Level



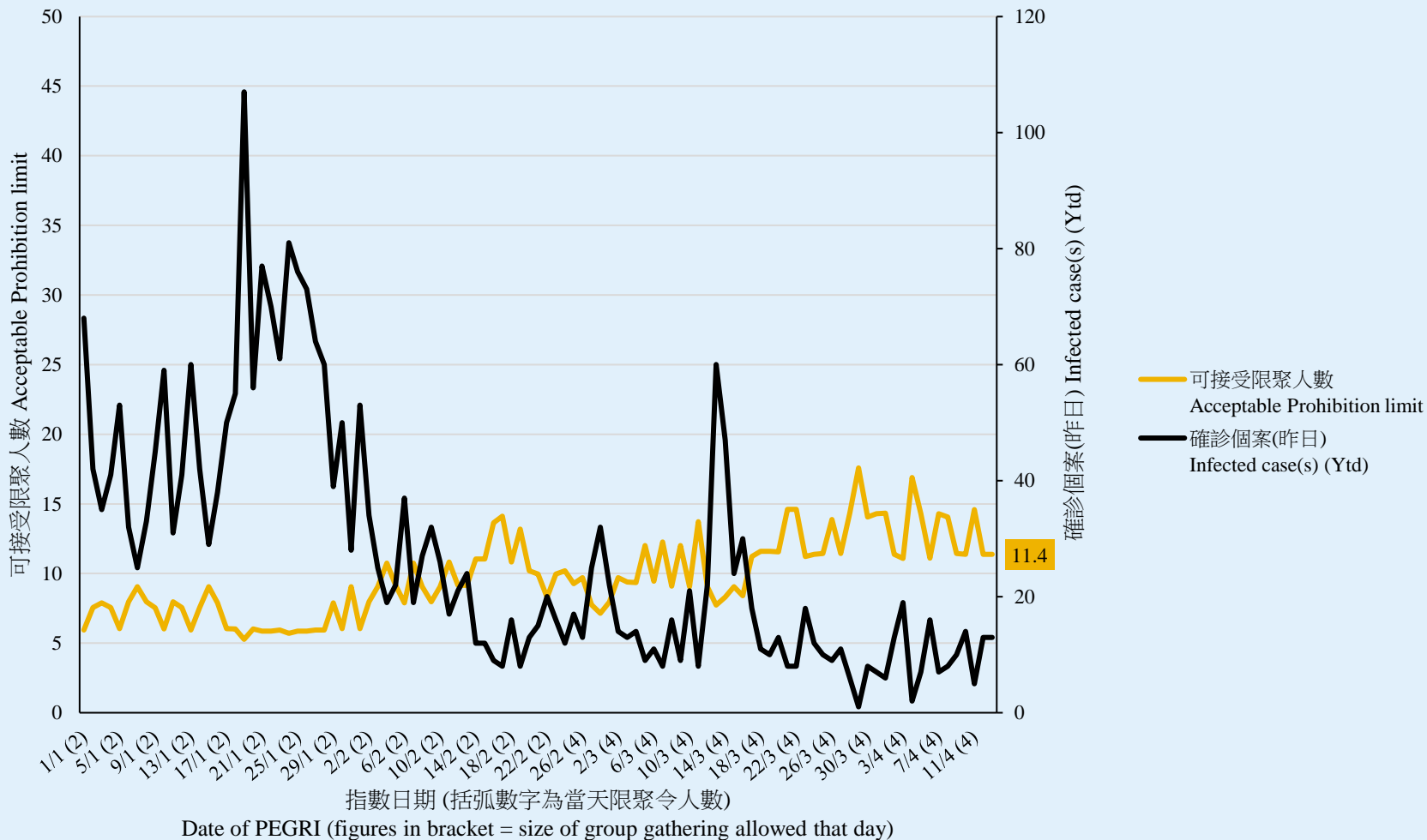
指數日期 (括弧數字為當天限聚令人數)

Date of PEGRI (figures in bracket = size of group gathering allowed that day)

調查結果 - 限聚指數

Survey Result – Group Gathering Prohibition Index

限聚指數 Group Gathering Prohibition Index



限聚指數 - 分析評論

Group Gathering Prohibition Index – Commentary

30

香港民意研究所副行政總裁鍾劍華解釋：「今天政府召開記者會宣布構想放寬食肆的限聚措施及有條件容許酒吧復業，市民的反應負面，懷疑政府要藉此迫令市民下載使用『安心出行』。今天的『限聚指數』數值是11.4，有69%市民認為現時限聚令太緊，政府公布的方案，明顯與市民的期望有極大差距」

On the latest figures of GGPI, Deputy CEO of HKPORI Kim-Wah Chung observed, “The CE announced some measures to relax restrictions on restaurant and bar operation. Many people doubt that the government intends to compel more people to download and to use LeaveHomeSafe. The reading of GGPI as today is 11.4, and 69% considered the current ban too strict. This clearly indicates that the government’s measures are still behind public expectations.”