

POP



HONG KONG PUBLIC OPINION PROGRAM

HONG KONG PUBLIC OPINION RESEARCH INSTITUTE

香港民意研究所 之 香港民意研究計劃

Latest Tracking Poll Results

March 9, 2021

Contact Information

2

- Date of survey: 24-26/2/2021
- Survey method: Random telephone survey conducted by real interviewers
- Target population: Cantonese-speaking Hong Kong residents aged 18+
- Sample size: 1,000 (including 500 landline and 500 mobile samples)
- Effective response rate: 57.2%
- Sampling error: Sampling error of percentages not more than +/-4%, that of net values not more than +/-8% and that of ratings not more than +/-0.1 at 95% conf. level
- Weighting method: Rim-weighted according to figures provided by the Census and Statistics Department. The gender-age distribution of the Hong Kong population came from “Mid-year population for 2019”, while the educational attainment (highest level attended) distribution and economic activity status distribution came from “Women and Men in Hong Kong - Key Statistics (2019 Edition)”.

Survey Topic

3

- **Trust and Confidence Indicators**
 - People's trust in the HKSAR, Beijing Central and Taiwan Governments
 - People's confidence in the future and in “one country, two systems”
- **People's Most Familiar Political Figures**

Survey Result - Trust and Confidence Indicators

4

● People's trust in the HKSAR Government

	18-22/1/2021	24-26/2/2021	Change	Record
Trust	28%	36%	▲8% *	Record high since May 2019
Distrust	51%	50%	▼1%	Record low since Nov. 2020
Net trust	-23%	-14%	▲9%	Record high since Mar. 2019
Mean value	2.5	2.6	▲0.1	Record high since May 2019

- Regarding people's trust in the HKSAR Government, 36% of the respondents expressed trust, 50% expressed distrust, thus the net trust value is negative 14 percentage points, a new high since March 2019. The mean score is 2.6, meaning between "quite distrust" and "half-half" in general.

* Significant change

Survey Result - Trust and Confidence Indicators

5

● People's trust in Beijing Central and Taiwan Governments

	17-20/8/2020	24-26/2/2021	Change	Record
Net trust in Beijing Government	-29%	-2%	▲27% *	Record high since Sept. 2018
Net trust in Taiwan Government	2%	-9%	▼11% *	Record low since Aug. 2019

- Regarding people's trust in governments, the net trust in the HKSAR Government, the Beijing Central Government and the Taiwan Government are negative 14, negative 2 and negative 9 percentage points respectively. Compared to half a year ago, net trust in the Beijing Central Government has increased sharply by 27 percentage points, while that in the Taiwan Government has significantly decreased by 11 percentage points.

* Significant change

Survey Result - Trust and Confidence Indicators

6

- **People’s confidence in the future and in “one country, two systems”**

	17-20/8/2020	24-26/2/2021	Change	Record
Net confidence in HK’s future	-19%	3%	▲21% *	Record high since Jan. 2018
Net confidence in China’s future	-4%	34%	▲39% *	Record high since Jan. 2018
Net confidence in “one country, two systems”	-26%	-5%	▲22% *	Record high since Sept. 2018

- As for the confidence indicators, net confidence in the future of Hong Kong, in the future of China and in “one country, two systems” are positive 3, positive 34 and negative 5 percentage points respectively. All three confidence indicators have surged by 21 to 39 percentage points compared to half a year ago.

* Significant change

Survey Topic

7

- **Trust and Confidence Indicators**
 - People's trust in the HKSAR, Beijing Central and Taiwan Governments
 - People's confidence in the future and in “one country, two systems”
- **People's Most Familiar Political Figures**

Survey result - People's Most Familiar Political Figures

8

● Most familiar political figures (Rank 1-10)

Rank #	Political figures	3-6/8/2020	24-26/2/2021	Change	Record
1	Carrie Lam	61%	61%	--	--
2	Paul Chan	11%	32%	▲21%	All-time record high since Nov. 2012
3	Leung Chun-ying	22%	23%	▲1%	Record high since Aug. 2019
4	Regina Ip	17%	18%	▲1%	Record high since Apr. 2018
5	Tung Chee-hwa	18%	17%	▼1%	Record low since Oct 2016
6	Donald Tsang	13%	17%	▲4%	Record high since Feb. 2020
7	Teresa Cheng	11%	16%	▲6%	All-time record high since Sept. 2018
8	Matthew Cheung	23%	14%	▼8%	Record low since Feb. 2020
9	Martin Lee	12%	14%	▲3%	Record high since Aug. 2019
10	Starry Lee	12%	11%	▼1%	Record low since Feb 2020

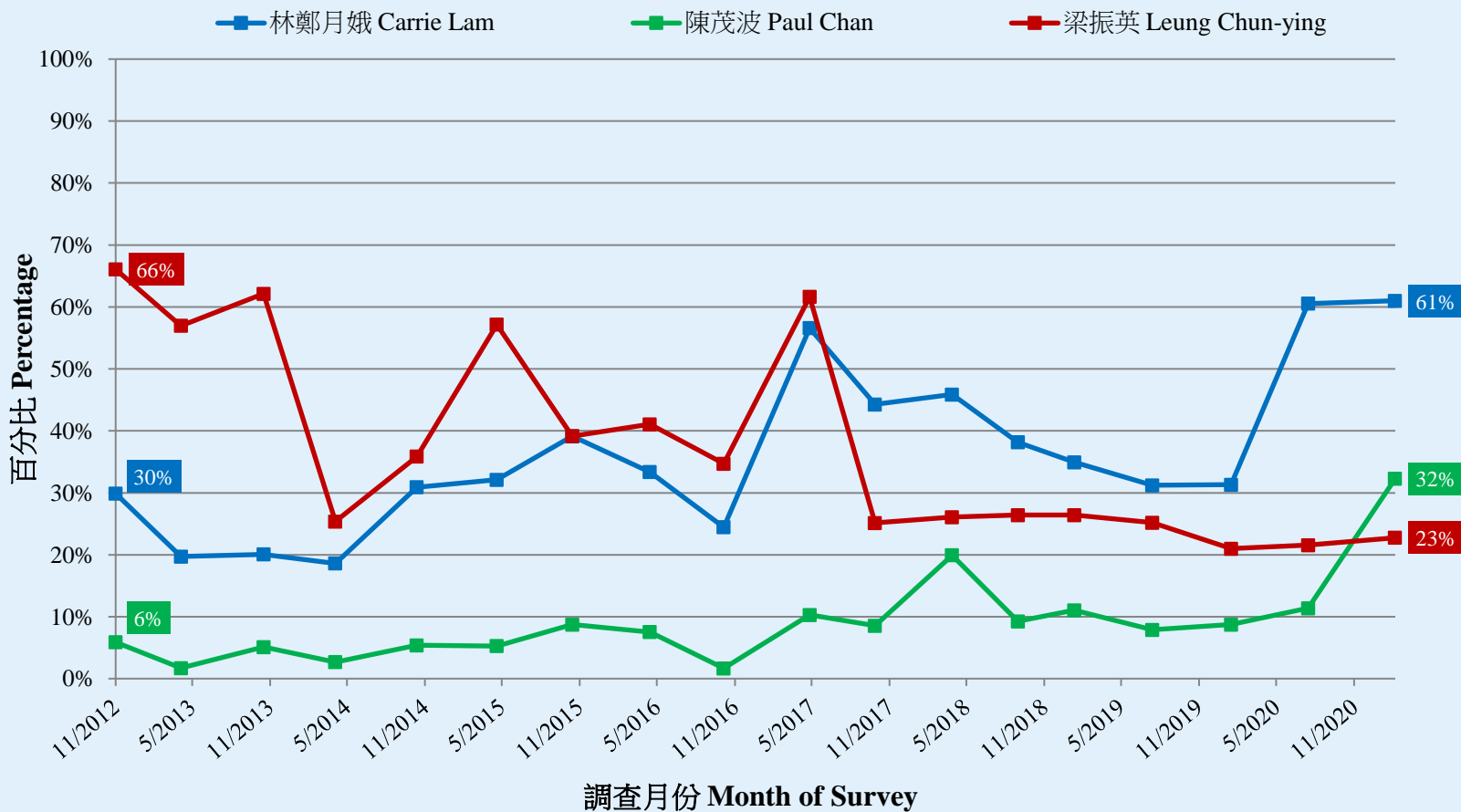
- Compared to half a year ago, regardless of their popularities, 8 political figures remain in the top 10. **Joshua Wong** and **Alvin Yeung** have fallen out of the list and are replaced by **Paul Chan** and **Teresa Cheng**. The naming percentages for **Carrie Lam**, **Paul Chan** and **Teresa Cheng** have registered new **record high** and that for **Tung Chee-hwa** has registered **record low since 2016**.

If the rounded figures are the same, numbers after the decimal point will be considered.

Survey result - People's Most Familiar Political Figures

9

市民最熟悉政治人物 (按次計算)
People's Most Familiar Political Figures (Per Poll)
(11/2012 – 2/2021)



Survey result - People's Most Familiar Political Figures

10

● Most familiar political figures (Rank 11-20)

Rank #	Political figures	3-6/2/2020	3-6/8/2020	Change	Record
11	Joshua Wong	19%	10%	▼9%	Record low since Feb. 2020
12	Sophia Chan	7%	9%	▲2%	All-time record high since Jan. 2019
13	Tam Yiu-chung	10%	9%	▼1%	Record low since Feb. 2020
14	Leung Kwok-hung	8%	8%	--	--
15	Jasper Tsang	9%	8%	--	--
16	Lee Cheuk-yan	3%	8%	▲5%	Record high since Sept. 2018
17	John Tsang	5%	7%	▲2%	Record high since Feb. 2020
18	Anson Chan	9%	6%	▼2%	All-time record low since Mar 1997
19	Henry Tang	5%	6%	▲2%	Record high since Feb. 2020
20	Agnes Chow	3%	6%	▲2%	All-time record high since Aug. 2019

- The naming percentages for **Sophia Chan** and **Agnes Chow** have both registered **historical high**, whereas that for **Anson Chan** has registered **historical low**.

If the rounded figures are the same, numbers after the decimal point will be considered.

Survey result - People's Most Familiar Political Figures

- **Average rank for past 10 surveys (24-27/10/2016 - 24-26/2/2021)**

Overall rank	Political figures	Average rank for 10 surveys	Overall rank	Political figures	Average rank for 10 surveys
1	Carrie Lam	1.6	11	Starry Lee	12.5
2	Leung Chun-ying	2.7	12	Paul Chan	15.4
3	Donald Tsang	4.0	13	Alvin Yeung	18.2
4	Tung Chee-hwa	4.6	14	Henry Tang	18.4
5	Regina Ip	6.0	15	Matthew Cheung	18.9
6	Martin Lee	8.7 [^]	16	Joshua Wong	21.3
7	Leung Kwok-hung	8.7 [^]	17	Michael Tien	21.7
8	Jasper Tsang	9.8	18	Raymond Wong	22.4
9	John Tsang	10.4	19	Tanya Chan	25.2
10	Anson Chan	12.1	20	Rita Fan / James Tien	26.7 [^]

- Based on the results of the past 10 surveys, **Carrie Lam** has the highest overall rank, followed by **Leung Chun-ying**, **Donald Tsang** and **Tung Chee-hwa**.

[^] The average ranks for 10 surveys are identical.

POP



HONG KONG PUBLIC OPINION PROGRAM

HONG KONG PUBLIC OPINION RESEARCH INSTITUTE

香港民意研究所 之 香港民意研究計劃

Community Democracy Project -

Community Health Module

Latest Results

March 9, 2021

Contact Information - Community Health Module

13

	HKPOP Panel	
Date of survey	March 1, 3pm – March 8, 3pm	
Survey method	Online survey	
Target population	Hong Kong residents aged 12+	
	Representative Panel	Volunteer Panel
Total sample size	673	4,933
Response rate	7.7%	5.7%
Sampling error	Sampling error of percentages at +/-4% at 95% confidence level	Sampling error of percentages at +/-1% at 95% confidence level
Weighting method	The figures are rim-weighted according to 1) gender-age distribution of Hong Kong population and by District Councils population figures from Census and Statistics Department; 2) Voting results of District Councils Election from Registration and Electoral Office; 3) rating distribution of Chief Executive from regular tracking surveys.	

Survey Result - Community Health Module

14

- **Latest survey period: 1-8/3/2021**
- **Last survey period: 22/2-1/3/2021** (*Representative Panel N= 667 Volunteer Panel N= 5,993*)
- **Second last survey period: 25/1-22/2/2021** (*Representative Panel N= 816 Volunteer Panel N= 7,205*)

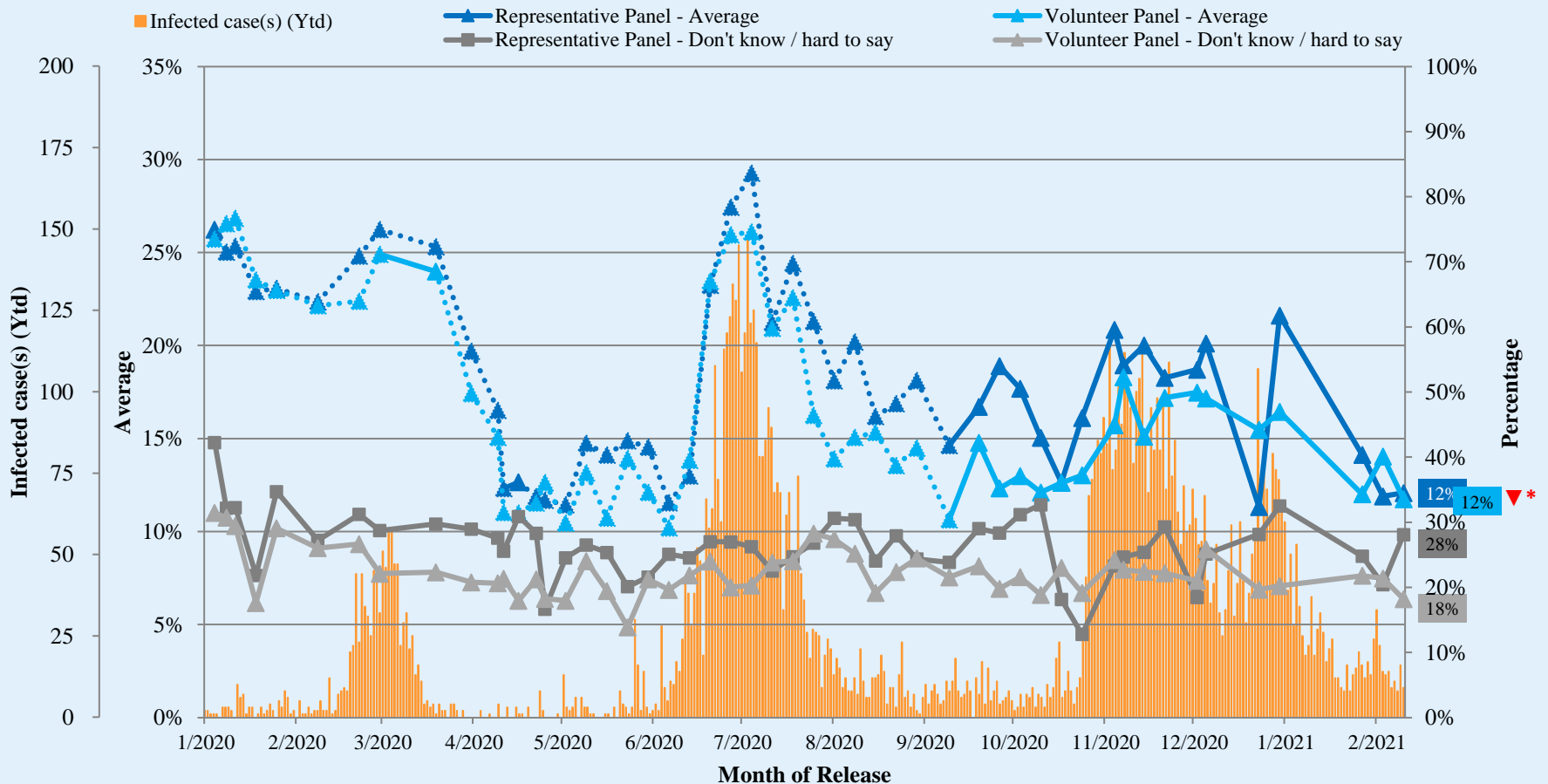
Opinion Question [^]		Representative Panel (N=671)		Volunteer Panel (N=4,925)	
		Don't know / hard to say	Average	Don't know / hard to say	Average
Q1 How likely do you think it is that you will contract novel coronavirus pneumonia over the next one month? [Logarithmic Scale]	Latest	28%	12%	18%	12% ▼*
	Last	20%	12%	21%	14%
	Second Last	25%	14%	22%	12%

[^] Answer options included: 0-10 rating scale, others and don't know / hard to say. Answer options changed from linear scale to logarithmic scale since Oct 2020.

* Significant change

Survey Result - Community Health Module

Assessment of the public's expected chance of COVID-19 infection



^ Answer options included: 0-10 rating scale, others and don't know / hard to say. Answer options changed from linear scale to logarithmic scale since Oct 2020.

* Significant change

Survey Result - Community Health Module

16

- **Latest survey period: 1-8/3/2021**
- **Last survey period: 22/2-1/3/2021** (*Representative Panel N=667 Volunteer Panel N=6,003*)
- **Second last survey period: 25/1-22/2/2021** (*Representative Panel N=814 Volunteer Panel N=7,203*)

Opinion Question [^]		Representative Panel (N=671)				Volunteer Panel (N=4,928)			
		Satisfied	Half-half	Dissatisfied	Mean [†]	Satisfied	Half-half	Dissatisfied	Mean [†]
Q2 How satisfied or dissatisfied are you with the government's performance in handling novel coronavirus pneumonia?	Latest	21% ▼*	24% ▲*	54% ▼*	2.3	20% ▲*	15%	65% ▼*	2.1 ▲*
	Last	29%	10%	60%	2.3	16%	15%	68%	2.0
	Second Last	25%	17%	58%	2.3	22%	10%	67%	2.1

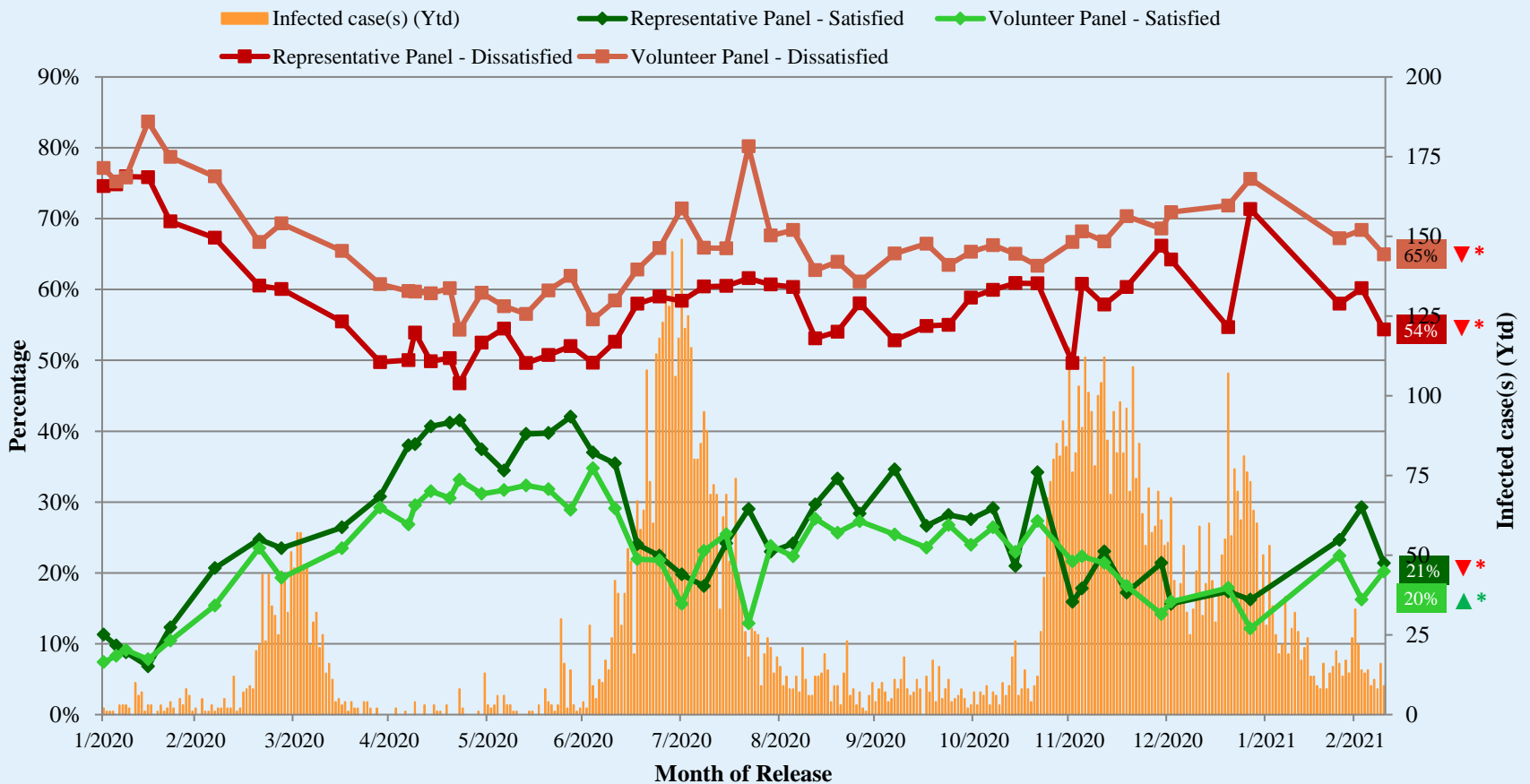
[^] Answer options included: very much satisfied, somewhat satisfied, half-half, somewhat dissatisfied, very much dissatisfied and don't know / hard to say

[†] The mean value is calculated by quantifying all individual responses into 1, 2, 3, 4, 5 marks according to their degree of positive level, where 1 is the lowest and 5 the highest, and then calculate the sample mean.

* Significant change

Survey Result - Community Health Module

Appraisal of HK Government's performance in handling novel coronavirus pneumonia



^ Answer options included: very much satisfied, somewhat satisfied, half-half, somewhat dissatisfied, very much dissatisfied and don't know / hard to say * Significant change

POP



HONG KONG PUBLIC OPINION PROGRAM

HONG KONG PUBLIC OPINION RESEARCH INSTITUTE

香港民意研究所 之 香港民意研究計劃

Community Democracy Project - Community Health Module

Post-Epidemic Normality Resumption Index (PENRI)

Latest Results

March 9, 2021

Contact Information - PENRI

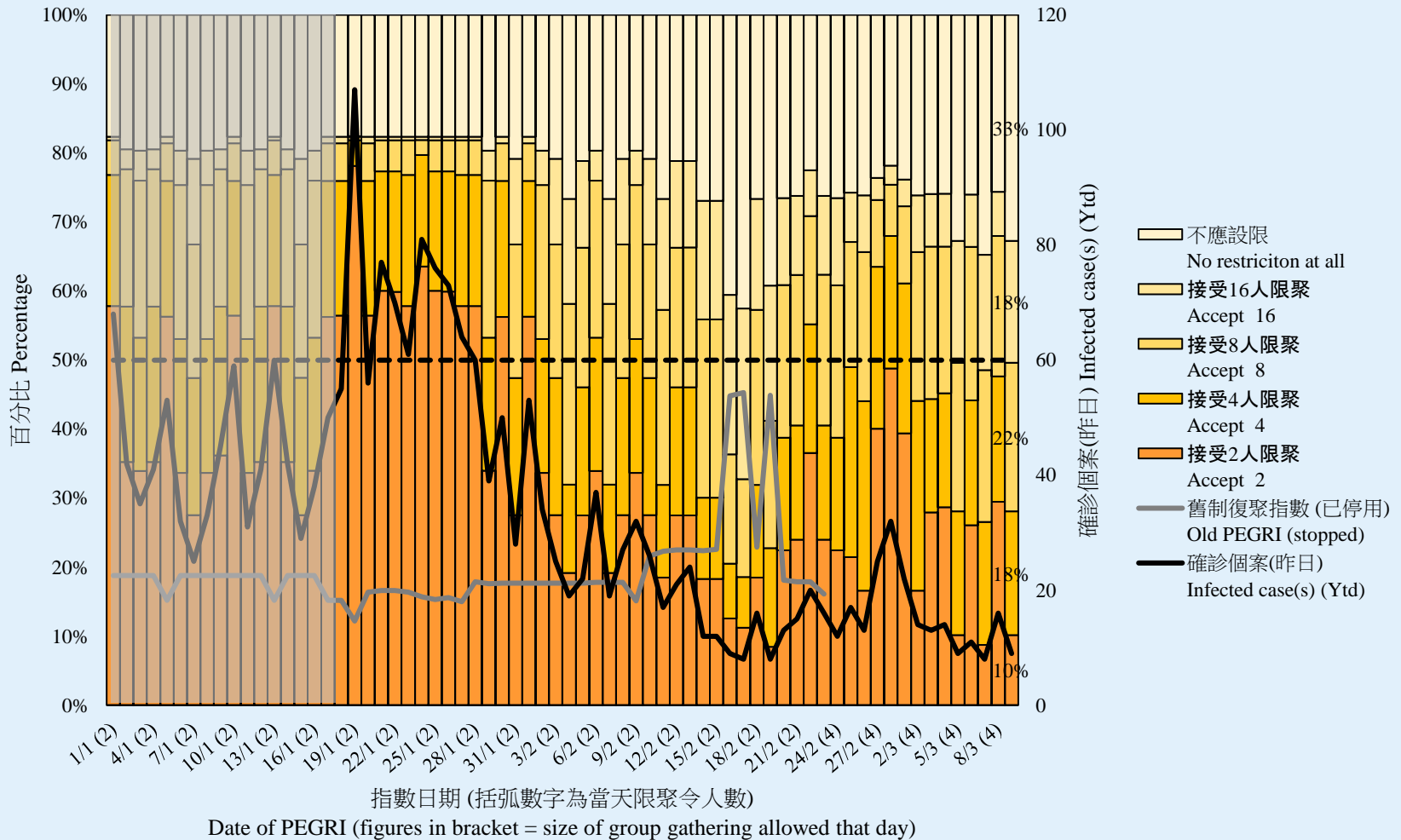
19

	HKPOP Panel
Date of survey	February 24, 3pm – March 2, 3pm
Survey method	Online survey
Target population	Hong Kong residents aged 12+
Total sample size	6,605
Response rate	6.9%
Sampling error	Sampling error of percentages at +/-1% at 95% confidence level
Weighting method	The figures are rim-weighted according to 1) gender-age distribution of Hong Kong population and by District Councils population figures from Census and Statistics Department; 2) Voting results of District Councils Election from Registration and Electoral Office; 3) rating distribution of Chief Executive from regular tracking surveys.

Survey Result - PENRI

20

疫後復聚指數 Post-Epidemic Gathering Resumption Index (PEGRI)



Survey Result - PENRI

21

疫後復聚指數 Post-Epidemic Gathering Resumption Index (PEGRI)

