

POP



HONG KONG PUBLIC OPINION PROGRAM

HONG KONG PUBLIC OPINION RESEARCH INSTITUTE

香港民意研究所 之 香港民意研究計劃

Community Democracy Project -

Community Health Module

Latest Results

December 11, 2020

Contact Information - Community Health Module

2

	HKPOP Panel	
Date of survey	December 3, 3pm – December 10, 3pm	
Survey method	Online survey	
Target population	Hong Kong residents aged 12+	
	Representative Panel	Volunteer Panel
Total sample size	792	8,067
Response rate	9.3%	9.0%
Sampling error	Sampling error of percentages at +/-3% at 95% confidence level	Sampling error of percentages at +/-1% at 95% confidence level
Weighting method	The figures are rim-weighted according to 1) gender-age distribution of Hong Kong population and by District Councils population figures from Census and Statistics Department; 2) Voting results of District Councils Election from Registration and Electoral Office; 3) rating distribution of Chief Executive from regular tracking surveys.	

Survey Result - Community Health Module

3

- **Question: How likely do you think it is that you will contract novel coronavirus pneumonia over the next one month?**

Linear Scale	Logarithmic Scale
Certainly not	0% chance (Certainly not)
	0.001% chance (1 in 100,000)
	0.01% chance (1 in 10,000)
	0.1% chance (1 in 1,000)
	1% chance (1 in 100)
10% chance	5% chance (1 in 20)
	10% chance (1 in 10)
20% chance	15% chance
	20% chance
30% chance	25% chance
	30% chance
40% chance	35% chance
	40% chance
50% chance	45% chance
	50% chance
60% chance	60% chance
70% chance	70% chance
80% chance	80% chance
90% chance	90% chance
100% chance (Certainly will)	100% chance (Certainly will)

^ Answer options included: 0-10 rating scale, others and don't know / hard to say. Apart from the linear scale, this question with answer options on a logarithmic scale has been asked since Oct 2020.

Survey Result - Community Health Module

4

- **Latest survey period: 3-10/12/2020**
- **Question: How likely do you think it is that you will contract novel coronavirus pneumonia over the next one month?**

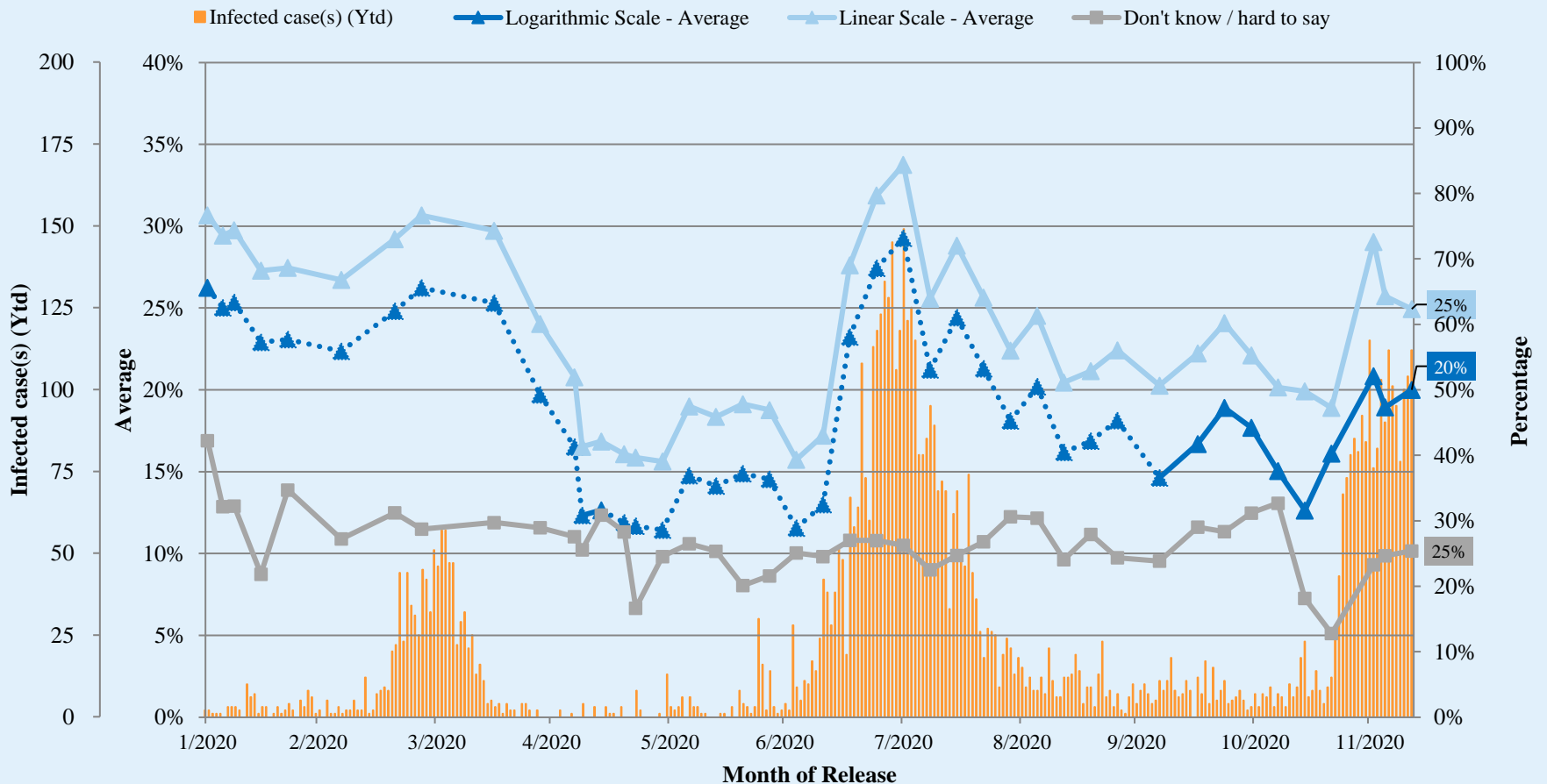
	Representative Panel		Volunteer Panel	
	Don't know / hard to say	Average	Don't know / hard to say	Average
Linear Scale	28%	25%	24%	20% ▼*
Logarithmic Scale	25%	20%	22%	15% ▼*

^ Answer options included: 0-10 rating scale, others and don't know / hard to say. Apart from the linear scale, this question with answer options on a logarithmic scale has been asked since Oct 2020.

* **Significant change**

Survey Result - Community Health Module

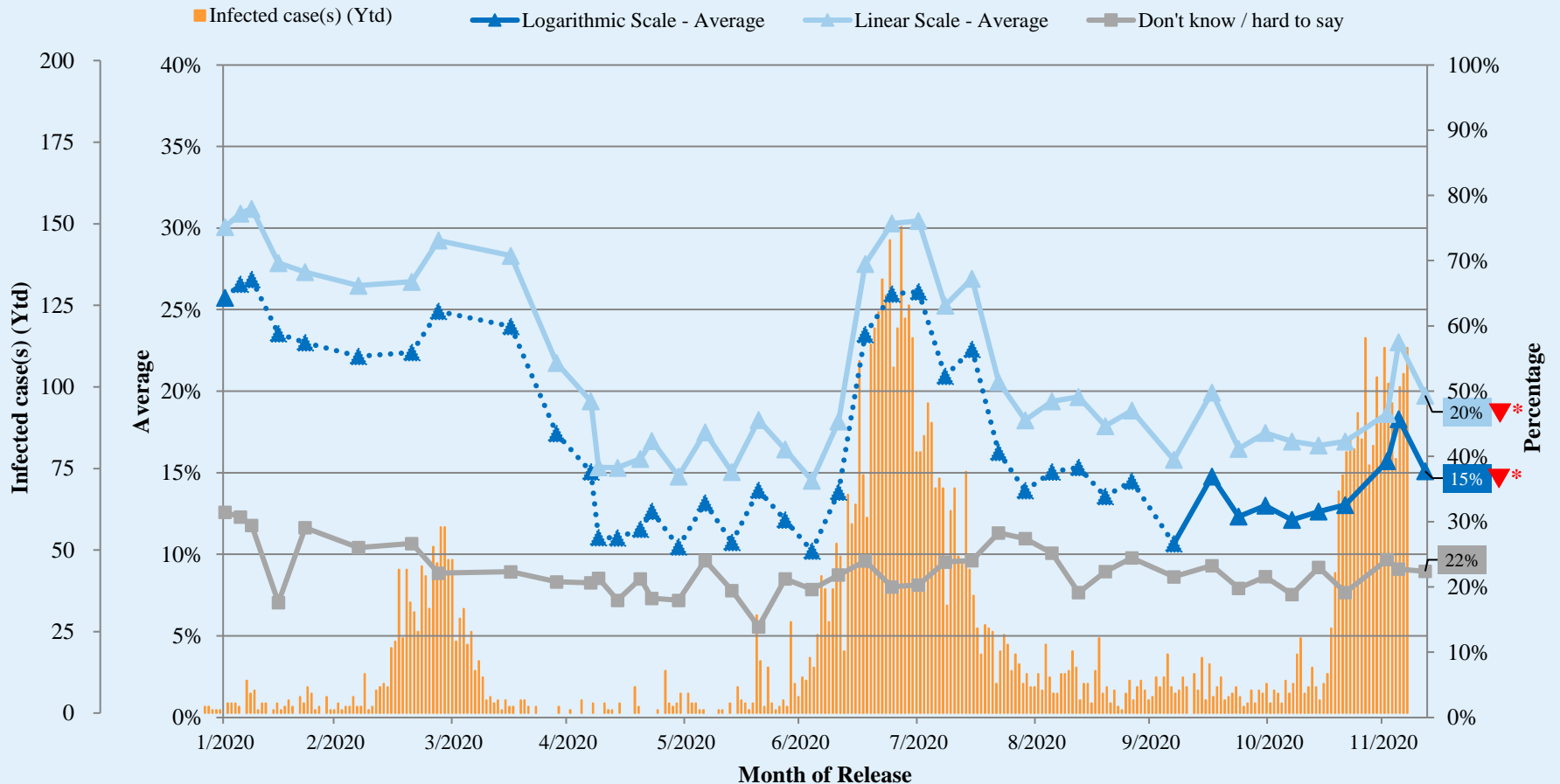
Assessment of the public's expected chance of COVID-19 infection (Representative Panel)



^ Answer options included: 0-10 rating scale, others and don't know / hard to say. Apart from the linear scale, this question with answer options on a logarithmic scale has been asked since Oct 2020.

Survey Result - Community Health Module

Assessment of the public's expected chance of COVID-19 infection (Volunteer Panel)



^ Answer options included: 0-10 rating scale, others and don't know / hard to say. Apart from the linear scale, this question with answer options on a logarithmic scale has been asked since Oct 2020.

* Significant change

Survey Result - Community Health Module

9

- Latest survey period: 3-10/12/2020
- Last survey period: 30/11-3/12/2020 (*Representative Panel N=389 Volunteer Panel N=4,129*)
- Second last survey period: 19-30/11/2020 (*Representative Panel N=278 Volunteer Panel N=2,588*)

Opinion Question [^]		Representative Panel (N=791)				Volunteer Panel (N=8,054)			
		Satisfied	Half-half	Dissatisfied	Mean [†]	Satisfied	Half-half	Dissatisfied	Mean [†]
Q2 How satisfied or dissatisfied are you with the government's performance in handling novel coronavirus pneumonia?	Latest	23% ▲*	19%	58%	2.2	21%	12% ▲*	67%	2.1 ▲*
	Last	18%	21%	61%	2.1	22%	9%	68%	2.0
	Second Last	16%	34%	50%	2.2	22%	12%	67%	2.0

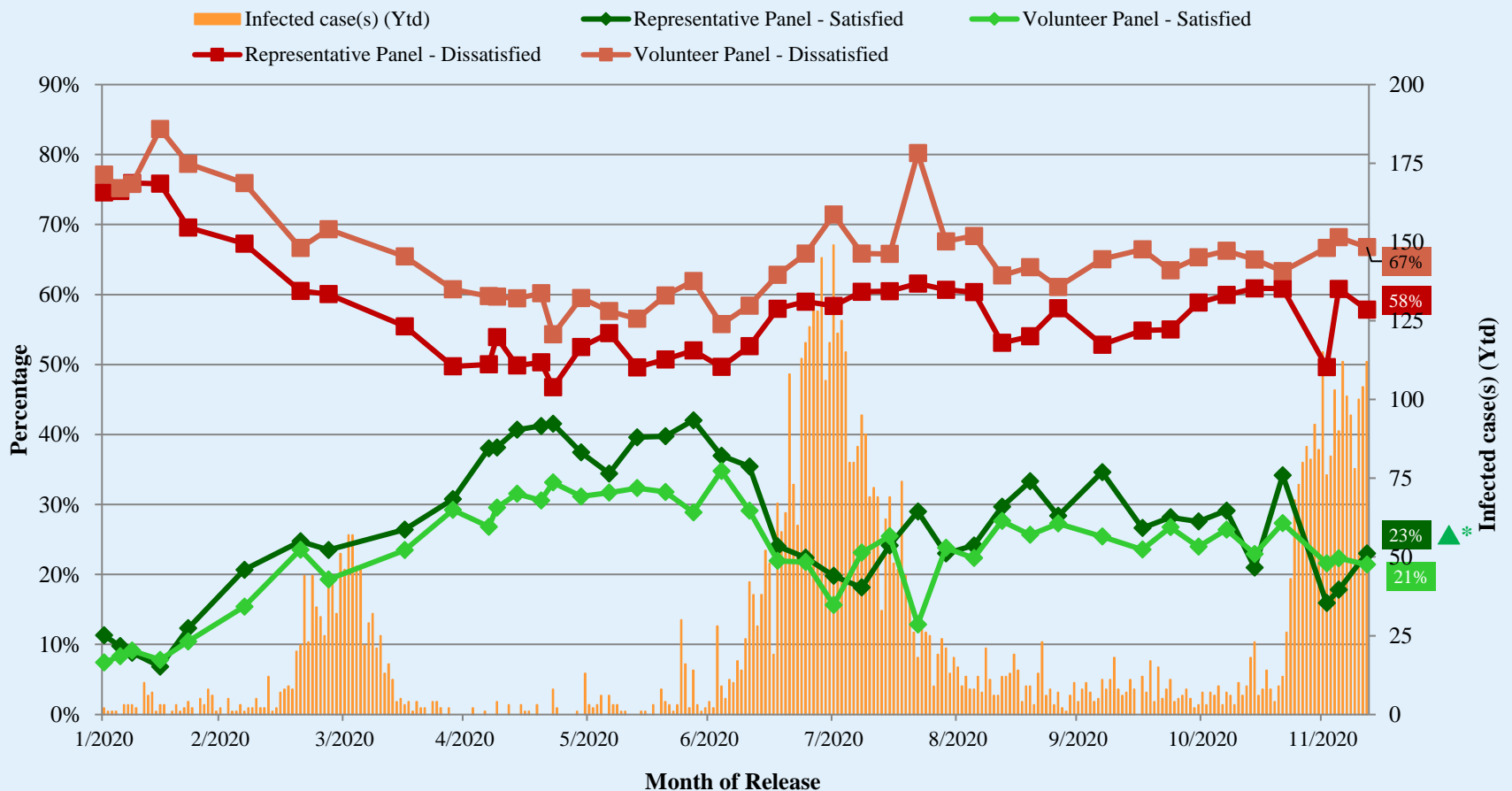
[^] Answer options included: very much satisfied, somewhat satisfied, half-half, somewhat dissatisfied, very much dissatisfied and don't know / hard to say

[†] The mean value is calculated by quantifying all individual responses into 1, 2, 3, 4, 5 marks according to their degree of positive level, where 1 is the lowest and 5 the highest, and then calculate the sample mean.

* Significant change

Survey Result - Community Health Module

Appraisal of HK Government's performance in handling novel coronavirus pneumonia



^ Answer options included: very much satisfied, somewhat satisfied, half-half, somewhat dissatisfied, very much dissatisfied and don't know / hard to say

* Significant change

POP



HONG KONG PUBLIC OPINION PROGRAM

HONG KONG PUBLIC OPINION RESEARCH INSTITUTE

香港民意研究所 之 香港民意研究計劃

Community Democracy Project - Community Health Module

Post-Epidemic Normality Resumption Index (PENRI)

Latest Results

December 11, 2020

Contact Information - PENRI

12

	HKPOP Panel
Date of survey	November 24, 3pm – December 10, 3pm
Survey method	Online survey
Target population	Hong Kong residents aged 12+
Total sample size	8,980
Response rate	9.2%
Sampling error	Sampling error of percentages at +/-1% at 95% confidence level
Weighting method	The figures are rim-weighted according to 1) gender-age distribution of Hong Kong population and by District Councils population figures from Census and Statistics Department; 2) Voting results of District Councils Election from Registration and Electoral Office; 3) rating distribution of Chief Executive from regular tracking surveys.

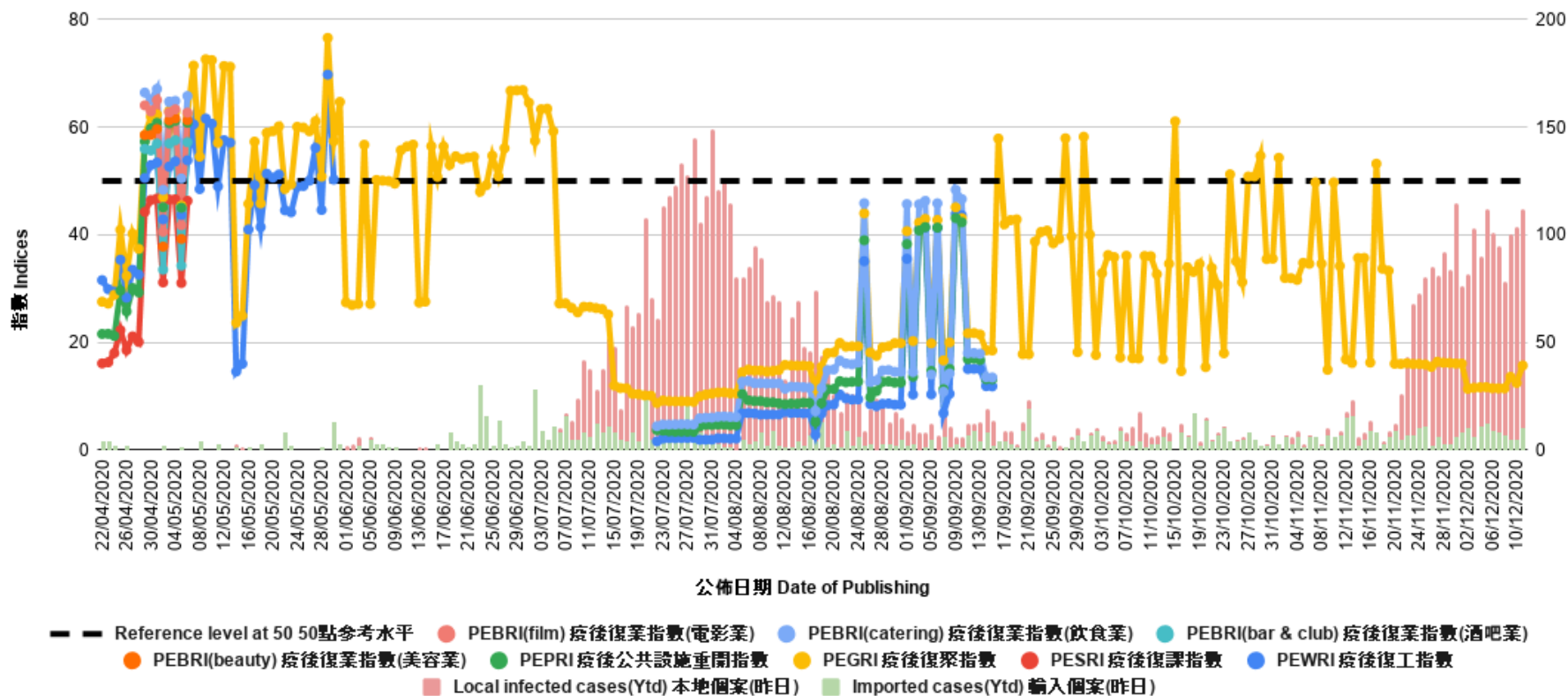
Survey Result - PENRI

13

Date of Publication	<u>27/11</u>	<u>28/11</u>	<u>29/11</u>	<u>30/11</u>	<u>1/12</u>	<u>2/12</u>	<u>3/12</u>	<u>4/12</u>	<u>5/12</u>	<u>6/12</u>	<u>7/12</u>	<u>8/12</u>	<u>9/12</u>	<u>10/12</u>	<u>11/12</u>
Imported Cases(Ytd)	6	3	3	6	8	10	6	11	12	9	8	7	5	5	10
Local Infection Cases(Ytd)	75	89	81	109	68	72	97	79	100	92	87	71	95	99	102
Post-Epidemic Gathering Resumption Index (PEGRI)	16.4	16.2	16.2	16.1	16.1	11.4	11.6	11.7	11.7	11.5	11.5	11.5	13.6	12.5	15.7

Survey Result - PENRI

14



POP



HONG KONG PUBLIC OPINION PROGRAM

HONG KONG PUBLIC OPINION RESEARCH INSTITUTE

香港民意研究所 之 香港民意研究計劃

“We Hongkongers” Panel Survey

Latest Results

December 11, 2020

Contact Information - “We Hongkongers” Panel Survey

17

	HKPOP Panel
Date of survey	December 7, 3pm – December 10, 3pm
Survey method	Online survey
Target population	Hong Kong residents aged 12+
Total sample size	8,665
Response rate	8.9%
Sampling error	Sampling error of percentages at +/-1% at 95% confidence level
Weighting method	The figures are rim-weighted according to 1) gender-age distribution, educational attainment (highest level attended) distribution, economic activity status distribution of Hong Kong population and by District Councils population figures from Census and Statistics Department; 2) Voting results of District Councils Election from Registration and Electoral Office; 3) rating distribution of Chief Executive from regular tracking surveys.

Survey Result - “We Hongkongers” Panel Survey

- Latest survey period: 7-10/12/2020
- Question: There is a suggestion that the government should make it mandatory for the public to use the “Leave Home Safe” mobile app before entering designated premises, in order to keep records of their whereabouts so as to minimise the risk of virus transmission. How much do you support or oppose this suggestion?

	Pro-democracy camp supporters (n=7,483)	Non-pro-democracy camp supporters* (n=748)	Combined^ (n=8,231)
Very much support	1%	35%	22%
Somewhat support	2%	19%	13%
Half-half	12%	18%	16%
Somewhat oppose	13%	9%	10%
Very much oppose	71%	17%	37%
Don't know / Hard to say	1%	2%	2%
Mean†	1.5	3.5	2.7

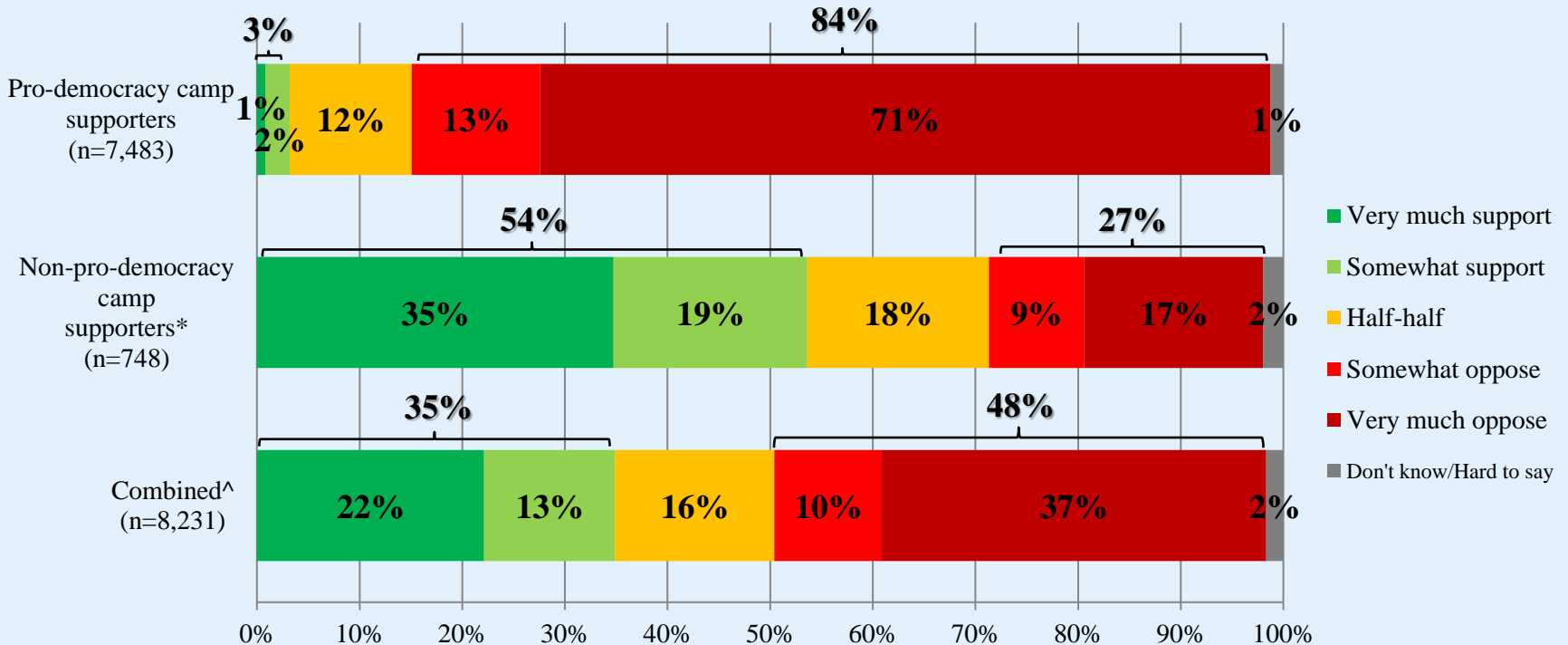
* Include: pro-establishment camp supporters, centrist supporters, no political inclination / politically neutral / do not belong to any camp

^ The aggregated figures come from adjusting the by-group weighted figures using ratio of “pan-democratic” vs “non-pan-democratic” collected in regular tracking survey.

† The mean value is calculated by quantifying all individual responses into 1, 2, 3, 4, 5 marks according to their degree of positive level, where 1 is the lowest and 5 the highest, and then calculate the sample mean.

Survey Result - “We Hongkongers” Panel Survey

- Latest survey period: 7-10/12/2020
- Question: There is a suggestion that the government should make it mandatory for the public to use the “Leave Home Safe” mobile app before entering designated premises, in order to keep records of their whereabouts so as to minimise the risk of virus transmission. How much do you support or oppose this suggestion?



* Include: pro-establishment camp supporters, centrist supporters, no political inclination / politically neutral / do not belong to any camp

^ The aggregated figures come from adjusting the by-group weighted figures using ratio of “pan-democratic” vs “non-pan-democratic” collected in regular tracking survey.