

POP



HONG KONG PUBLIC OPINION PROGRAM

HONG KONG PUBLIC OPINION RESEARCH INSTITUTE

香港民意研究所 之 香港民意研究計劃

Community Democracy Project -

Community Health Module

Latest Results

December 4, 2020

Contact Information - Community Health Module

2

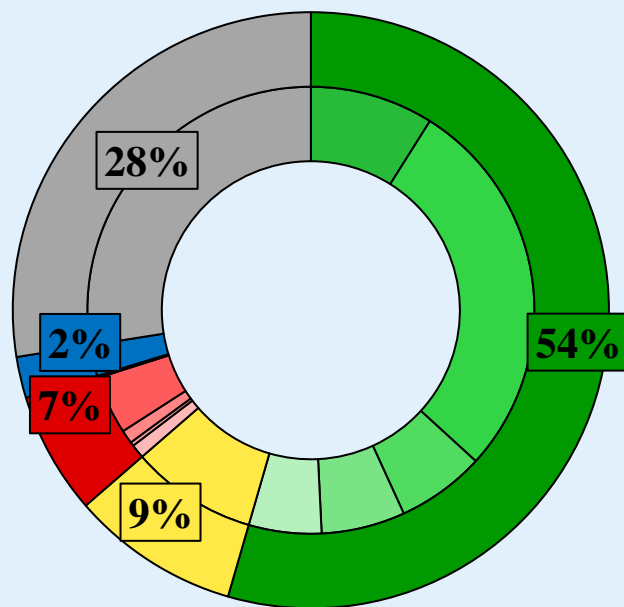
	HKPOP Panel	
Date of survey	November 30, 3pm – December 3, 3pm	
Survey method	Online survey	
Target population	Hong Kong residents aged 12+	
	Representative Panel	Volunteer Panel
Total sample size [#]	391	4,136
Response rate	9.3%	9.2%
Sampling error	Sampling error of percentages at +/-5% at 95% confidence level	Sampling error of percentages at +/-2% at 95% confidence level
Weighting method	The figures are rim-weighted according to 1) gender-age distribution of Hong Kong population and by District Councils population figures from Census and Statistics Department; 2) Voting results of District Councils Election from Registration and Electoral Office; 3) rating distribution of Chief Executive from regular tracking surveys.	

[#] In order to avoid response fatigue, email invitations are only sent to around half of the panel members under systematic sampling since Nov 2.

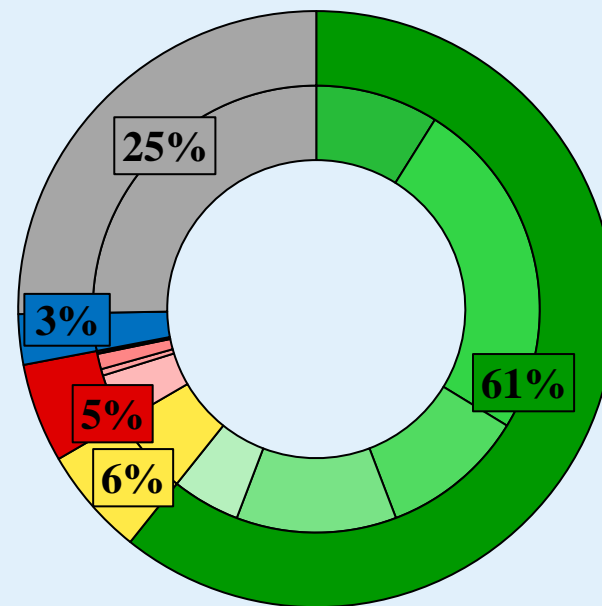
Survey Result - Community Health Module

3

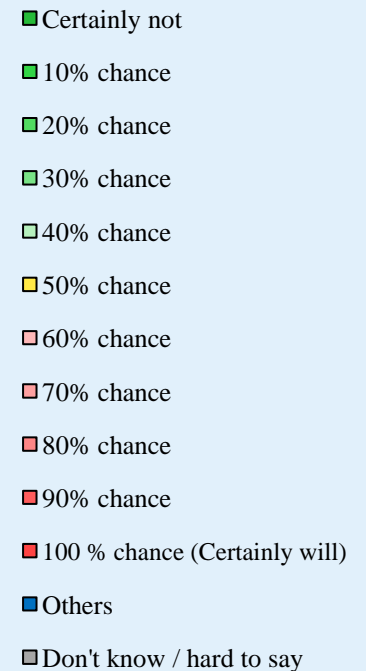
- Latest survey period: 30/11-3/12/2020
- Question: How likely do you think it is that you will contract novel coronavirus pneumonia over the next one month? [Linear Scale]



Representative Panel



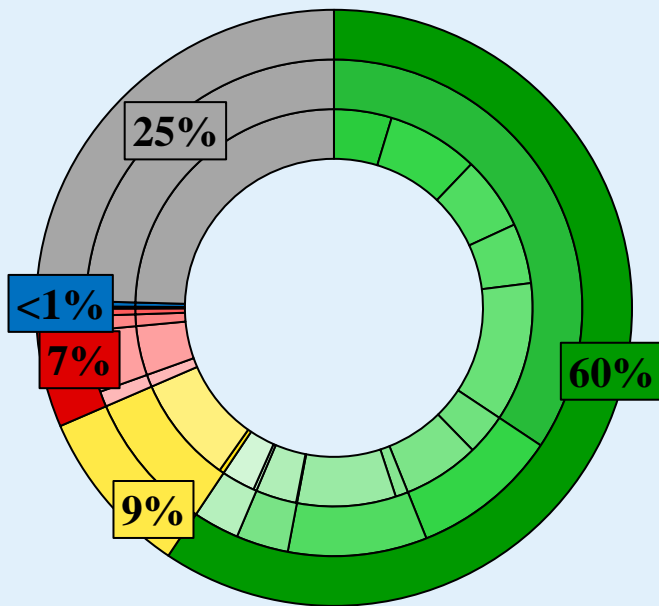
Volunteer Panel



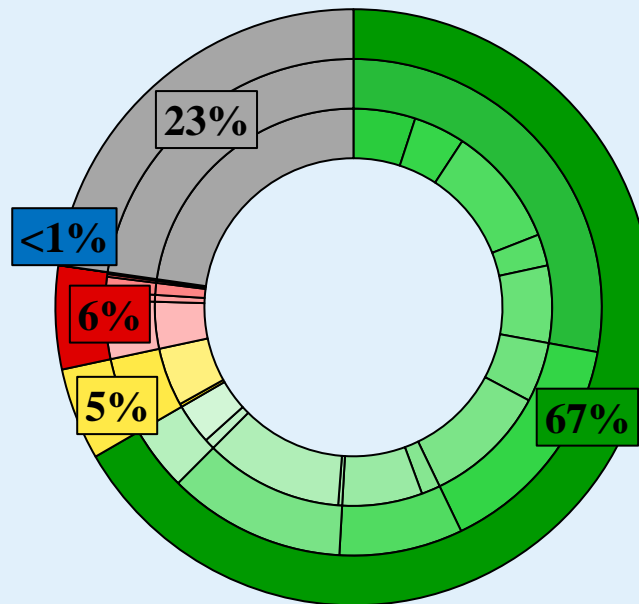
^ Answer options included: 0-10 rating scale, others and don't know / hard to say. Apart from the linear scale, this question with answer options on a logarithmic scale has been asked since Oct 2020.

Survey Result - Community Health Module

- Latest survey period: 30/11-3/12/2020
- Question: How likely do you think it is that you will contract novel coronavirus pneumonia over the next one month? [Logarithmic Scale]



Representative Panel



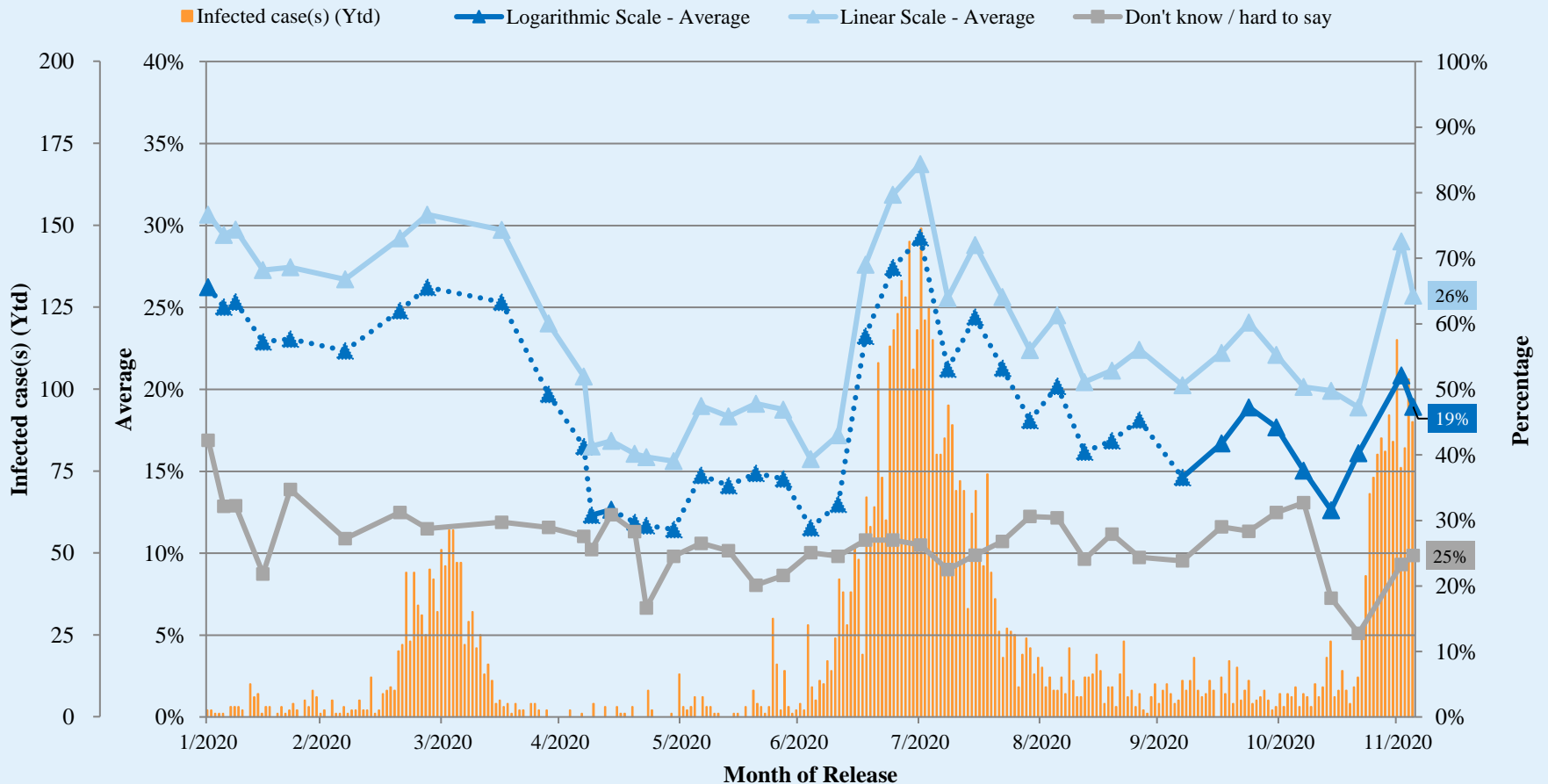
Volunteer Panel

- 0% chance (Certainly not)
- 0.001% chance (1 in 100,000)
- 0.01% chance (1 in 10,000)
- 0.1% chance (1 in 1,000)
- 1% chance (1 in 100)
- 5% chance (1 in 20)
- 10% chance (1 in 10)
- 15% chance
- 20% chance
- 25% chance
- 30% chance
- 35% chance
- 40% chance
- 45% chance
- 50% chance
- 60% chance
- 70% chance
- 80% chance
- 90% chance
- 100% chance (Certainly will)
- Others
- Don't know / hard to say

^ Answer options included: 0-10 rating scale, others and don't know / hard to say. Apart from the linear scale, this question with answer options on a logarithmic scale has been asked since Oct 2020.

Survey Result - Community Health Module

Assessment of the public's expected chance of COVID-19 infection (Representative Panel)

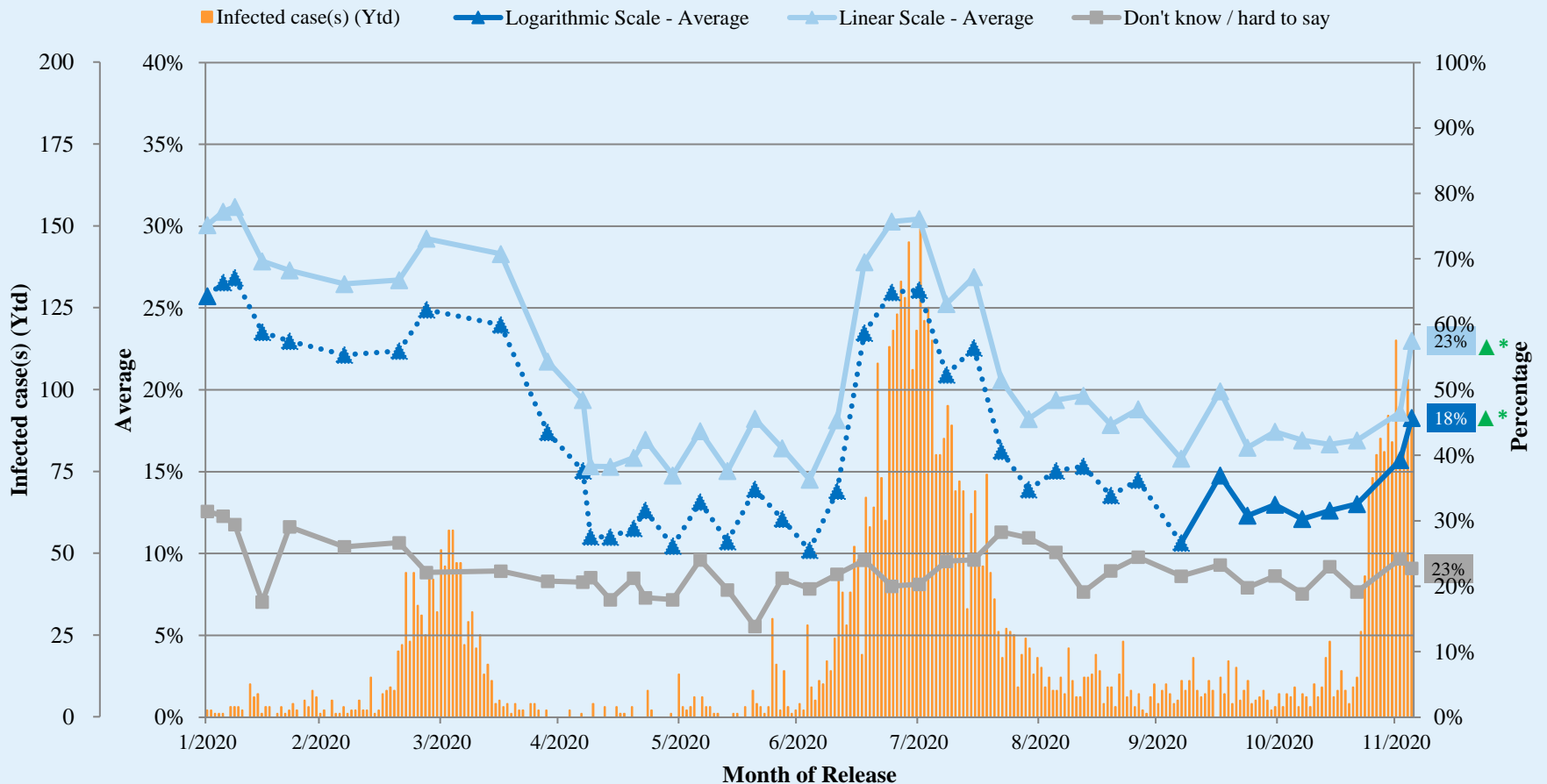


^ Answer options included: 0-10 rating scale, others and don't know / hard to say. Apart from the linear scale, this question with answer options on a logarithmic scale has been asked since Oct 2020.

Survey Result - Community Health Module

6

Assessment of the public's expected chance of COVID-19 infection (Volunteer Panel)



^ Answer options included: 0-10 rating scale, others and don't know / hard to say. Apart from the linear scale, this question with answer options on a logarithmic scale has been asked since Oct 2020.

* Significant change

Survey Result - Community Health Module

7

- **Latest survey period: 30/11-3/12/2020**
- **Last survey period: 19-30/11/2020** (*Representative Panel N=278 Volunteer Panel N=2,588*)
- **Second last survey period: 12-19/11/2020** (*Representative Panel N=444 Volunteer Panel N=4,677*)

Opinion Question [^]		Representative Panel (N=389)				Volunteer Panel (N=4,129)			
		Satisfied	Half-half	Dissatisfied	Mean [†]	Satisfied	Half-half	Dissatisfied	Mean [†]
Q2 How satisfied or dissatisfied are you with the government's performance in handling novel coronavirus pneumonia?	Latest	18%	21% ▼*	61% ▲*	2.1	22%	9% ▼*	68%	2.0
	Last	16%	34%	50%	2.2	22%	12%	67%	2.0
	Second Last	34%	5%	61%	2.4	27%	9%	63%	2.2

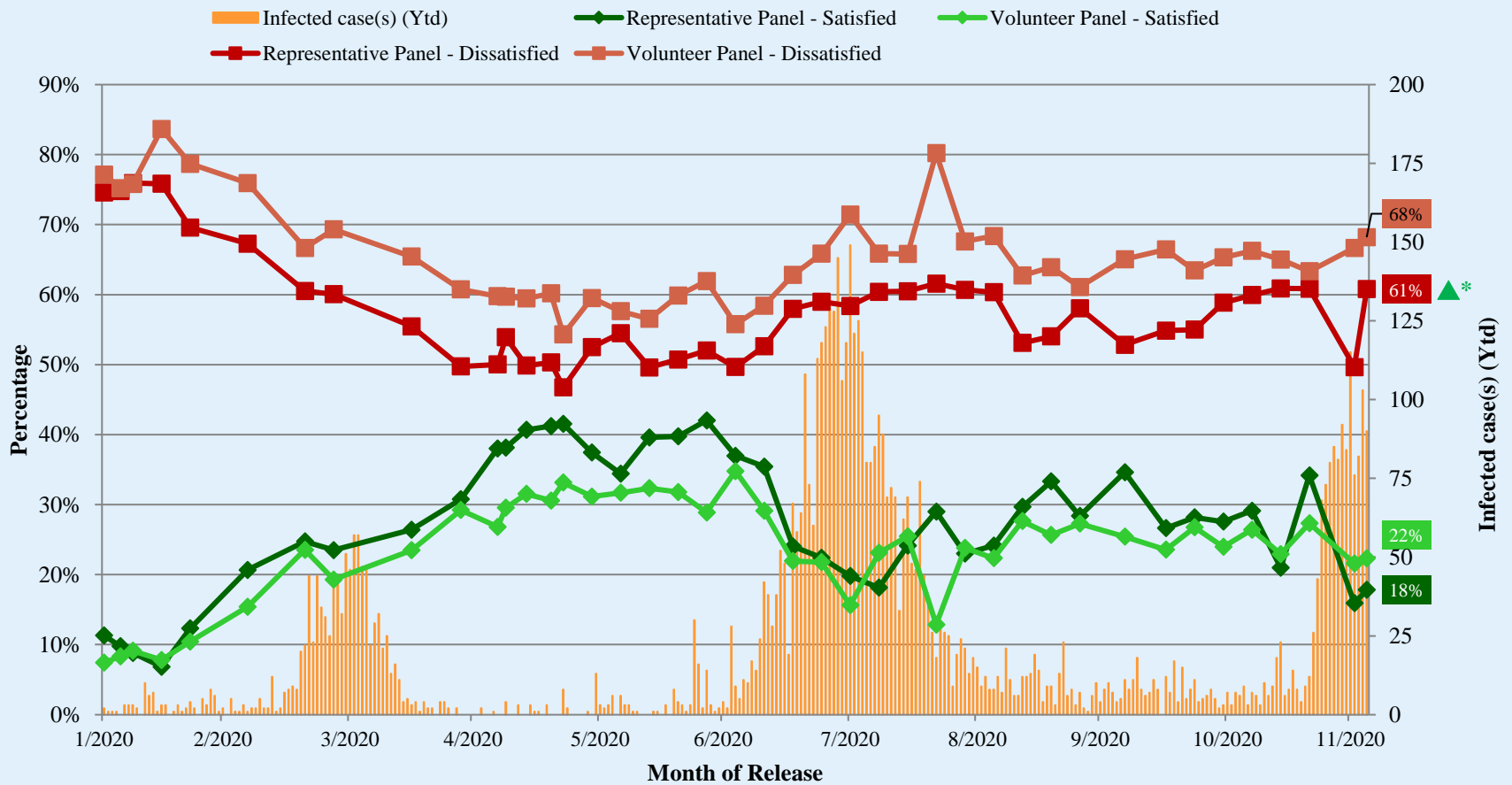
[^] Answer options included: very much satisfied, somewhat satisfied, half-half, somewhat dissatisfied, very much dissatisfied and don't know / hard to say

[†] The mean value is calculated by quantifying all individual responses into 1, 2, 3, 4, 5 marks according to their degree of positive level, where 1 is the lowest and 5 the highest, and then calculate the sample mean.

* **Significant change**

Survey Result - Community Health Module

Appraisal of HK Government's performance in handling novel coronavirus pneumonia



^ Answer options included: very much satisfied, somewhat satisfied, half-half, somewhat dissatisfied, very much dissatisfied and don't know / hard to say

* Significant change

POP



HONG KONG PUBLIC OPINION PROGRAM

HONG KONG PUBLIC OPINION RESEARCH INSTITUTE

香港民意研究所 之 香港民意研究計劃

Community Democracy Project - Community Health Module

Post-Epidemic Normality Resumption Index (PENRI)

Latest Results

December 4, 2020

Contact Information - PENRI

10

	HKPOP Panel
Date of survey	November 9, 3pm – December 3, 3pm
Survey method	Online survey
Target population	Hong Kong residents aged 12+
Total sample size [#]	7,567
Response rate	7.7%
Sampling error	Sampling error of percentages at +/-1% at 95% confidence level
Weighting method	The figures are rim-weighted according to 1) gender-age distribution of Hong Kong population and by District Councils population figures from Census and Statistics Department; 2) Voting results of District Councils Election from Registration and Electoral Office; 3) rating distribution of Chief Executive from regular tracking surveys.

[#] In order to avoid response fatigue, email invitations are only sent to around half of the panel members under systematic sampling since Nov 2.

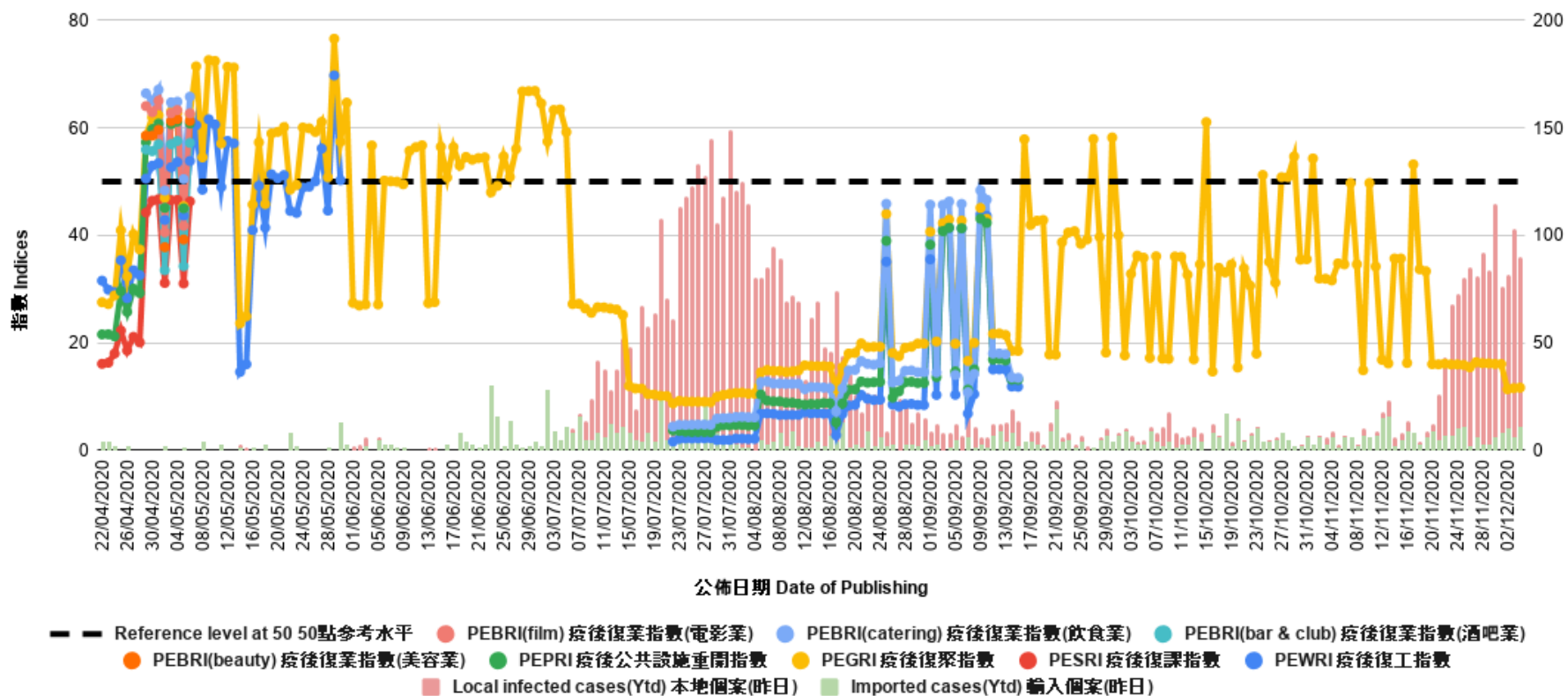
Survey Result - PENRI

11

Date of Publication	<u>20/11</u>	<u>21/11</u>	<u>22/11</u>	<u>23/11</u>	<u>24/11</u>	<u>25/11</u>	<u>26/11</u>	<u>27/11</u>	<u>28/11</u>	<u>29/11</u>	<u>30/11</u>	<u>1/12</u>	<u>2/12</u>	<u>3/12</u>	<u>4/12</u>
Imported Cases(Ytd)	9	5	7	7	10	11	2	6	3	3	6	8	10	6	11
Local Infection Cases(Ytd)	3	21	36	61	63	69	83	75	89	81	109	68	72	97	79
Post-Epidemic Gathering Resumption Index (PEGRI)	16.1	16.0	16.1	16.0	16.0	15.9	15.5	16.4	16.2	16.2	16.1	16.1	11.4	11.6	11.7

Survey Result - PENRI

12



POP



HONG KONG PUBLIC OPINION PROGRAM

HONG KONG PUBLIC OPINION RESEARCH INSTITUTE

香港民意研究所 之 香港民意研究計劃

“We Hongkongers” Panel Survey

Latest Results

December 4, 2020

Contact Information - “We Hongkongers” Panel Survey

14

	HKPOP Panel
Date of survey	November 30, 3pm – December 3, 3pm
Survey method	Online survey
Target population	Hong Kong residents aged 12+
Total sample size [#]	4,482
Response rate	9.2%
Sampling error	Sampling error of percentages at +/-1% at 95% confidence level
Weighting method	The figures are rim-weighted according to 1) gender-age distribution, educational attainment (highest level attended) distribution, economic activity status distribution of Hong Kong population and by District Councils population figures from Census and Statistics Department; 2) Voting results of District Councils Election from Registration and Electoral Office; 3) rating distribution of Chief Executive from regular tracking surveys.

In order to avoid response fatigue, email invitations are only sent to around half of the panel members under systematic sampling since Nov 2.

Survey Result - “We Hongkongers” Panel Survey

- Latest survey period: 30/11-3/12/2020
- Question: There is a saying the Hong Kong Judiciary should conform to the principle of “patriots ruling Hong Kong”. How much do you support or oppose this saying?

	Pro-democracy camp supporters (n=3,835)	Non-pro-democracy camp supporters* (n=386)	Combined^ (n=4,221)	
Very much support	1%	31%	20%	
Somewhat support	<1%	17%	11%	
	} 2%		} 31%	
Half-half	8%	9%	9%	
Somewhat oppose	8%	13%	11%	
Very much oppose	75%	25%	44%	
	} 82%		} 55%	
Don't know / Hard to say	8%	4%	6%	
Mean†	1.3	3.2	2.5	

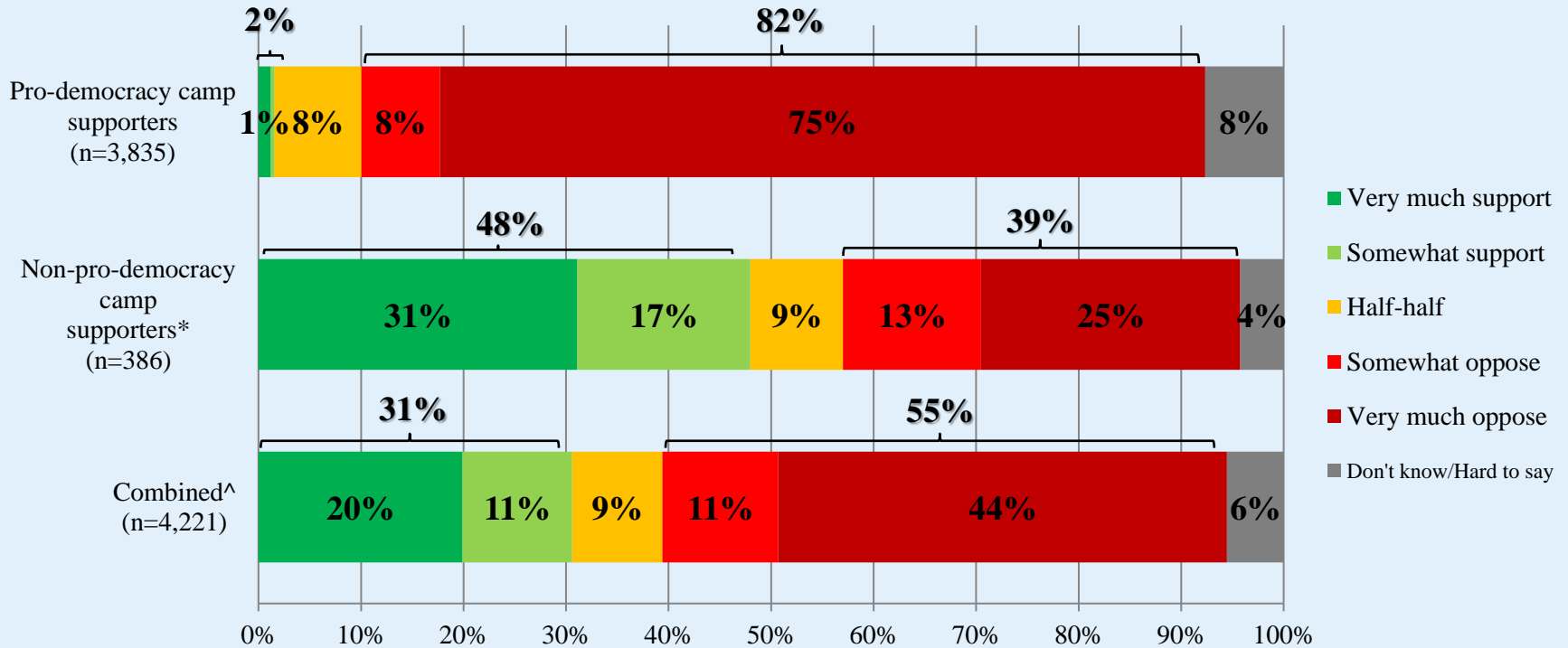
* Include: pro-establishment camp supporters, centrist supporters, no political inclination / politically neutral / do not belong to any camp

^ The aggregated figures come from adjusting the by-group weighted figures using ratio of “pan-democratic” vs “non-pan-democratic” collected in regular tracking survey.

† The mean value is calculated by quantifying all individual responses into 1, 2, 3, 4, 5 marks according to their degree of positive level, where 1 is the lowest and 5 the highest, and then calculate the sample mean.

Survey Result - “We Hongkongers” Panel Survey

- Latest survey period: 30/11-3/12/2020
- Question: There is a saying the Hong Kong Judiciary should conform to the principle of “patriots ruling Hong Kong”. How much do you support or oppose this saying?



* Include: pro-establishment camp supporters, centrist supporters, no political inclination / politically neutral / do not belong to any camp

^ The aggregated figures come from adjusting the by-group weighted figures using ratio of “pan-democratic” vs “non-pan-democratic” collected in regular tracking survey.