

POP



HONG KONG PUBLIC OPINION PROGRAM

HONG KONG PUBLIC OPINION RESEARCH INSTITUTE

香港民意研究所 之 香港民意研究計劃

Community Democracy Project -

Community Health Module

Latest Results

August 28, 2020

Contact Information - Community Health Module

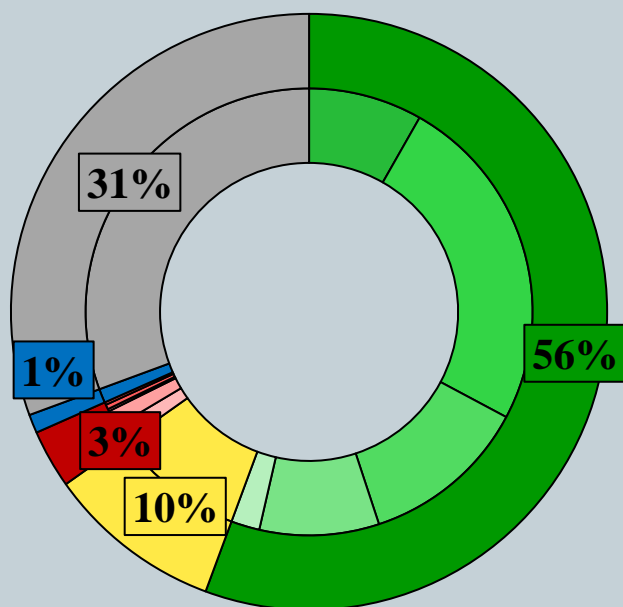
2

	HKPOP Panel	
Date of survey	August 20, 3pm – August 27, 3pm	
Survey method	Online survey	
Target population	Hong Kong residents aged 12+	
	Representative Panel	Volunteer Panel
Total sample size	1,061	18,293
Response rate	13.5%	19.2%
Sampling error	Sampling error of percentages at +/-3% at 95% confidence level	Sampling error of percentages at +/-1% at 95% confidence level
Weighting method	The figures are rim-weighted according to 1) gender-age distribution of Hong Kong population and by District Councils population figures from Census and Statistics Department; 2) Voting results of District Councils Election from Registration and Electoral Office; 3) rating distribution of Chief Executive from regular tracking surveys.	

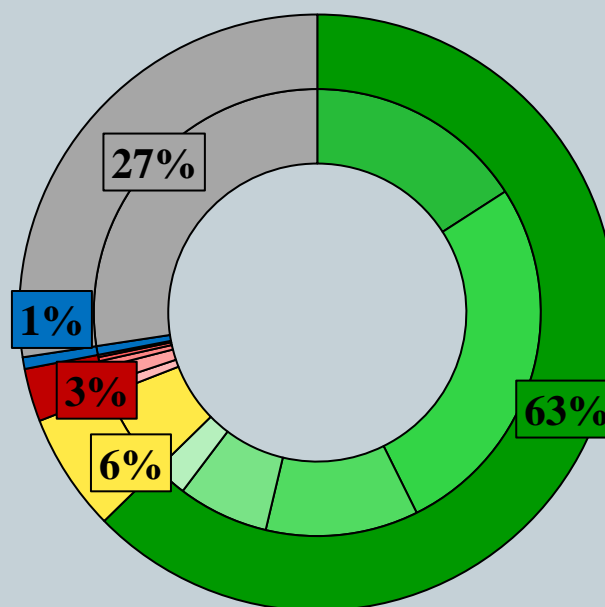
Survey Result - Community Health Module

3

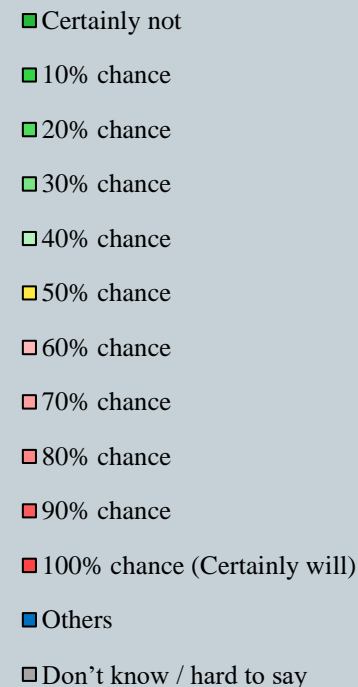
- Latest survey period: 20-27/8/2020
- Question: How likely do you think it is that you will contract novel coronavirus pneumonia over the next one month?



Representative Panel

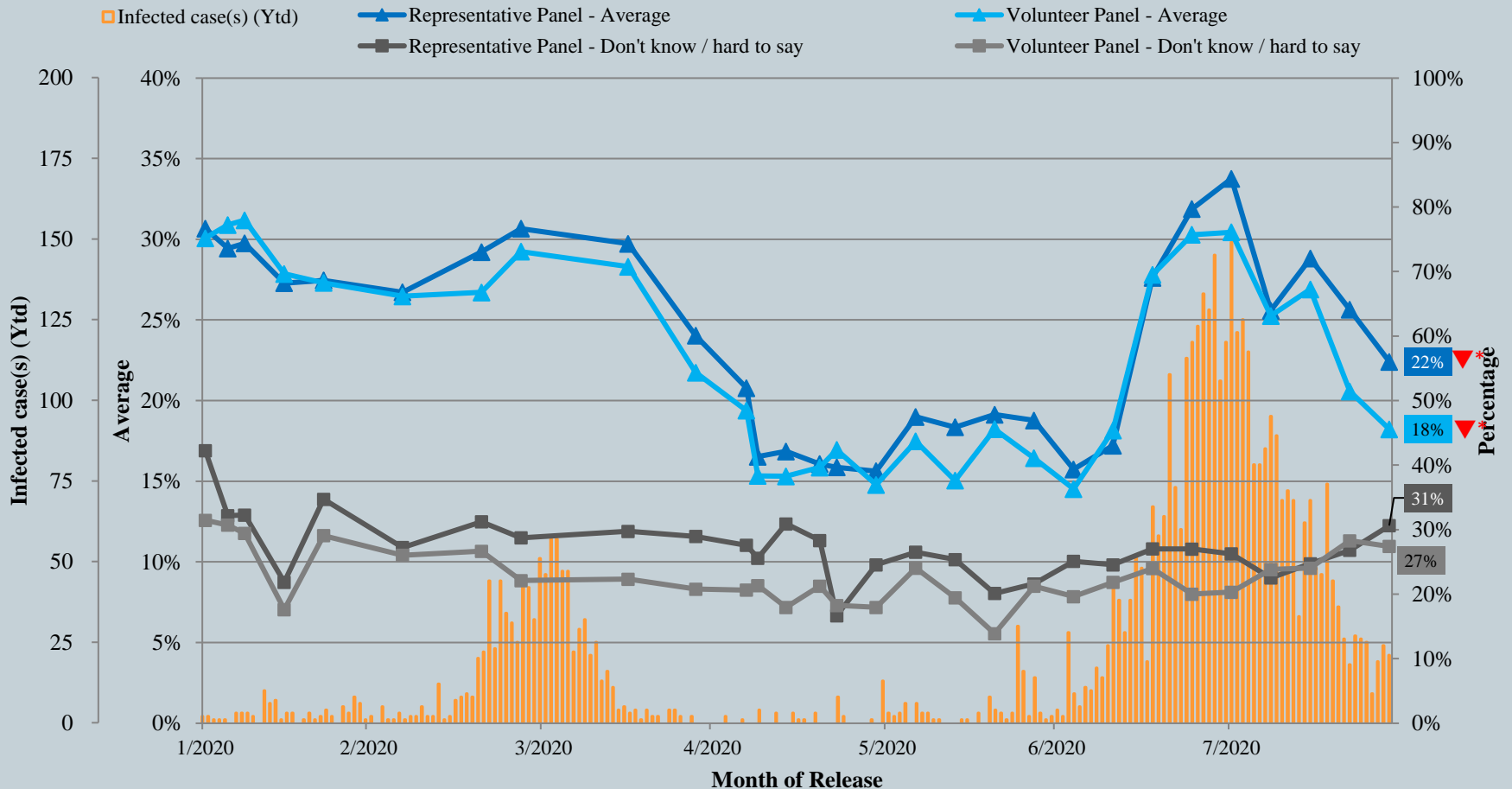


Volunteer Panel



Survey Result - Community Health Module

Assessment of the public's expected chance of COVID-19 infection



^ Answer options included: 0-10 rating scale, others and don't know / hard to say.

* Significant change

Survey Result - Community Health Module

5

- Latest survey period: 20-27/8/2020
- Last survey period: 13-20/8/2020 (*Representative Panel N=1,126 Volunteer Panel N=25,945*)
- Second last survey period: 6-13/8/2020 (*Representative Panel N=768 Volunteer Panel N=7,856*)

Opinion Question [^]		Representative Panel (N=1,059)				Volunteer Panel (N=18,272)			
		Satisfied	Half-half	Dissatisfied	Mean [†]	Satisfied	Half-half	Dissatisfied	Mean [†]
Q2 How satisfied or dissatisfied are you with the government's performance in handling novel coronavirus pneumonia?	Latest	23% ▼*	16% ▲*	61%	2.2 ▼*	24% ▲*	8% ▲*	68% ▼*	2.0 ▲*
	Last	29%	9%	62%	2.3	13%	7%	80%	1.7
	Second Last	24%	15%	60%	2.2	25%	9%	66%	2.1

[^] Answer options included: very much satisfied, somewhat satisfied, half-half, somewhat dissatisfied, very much dissatisfied and don't know / hard to say

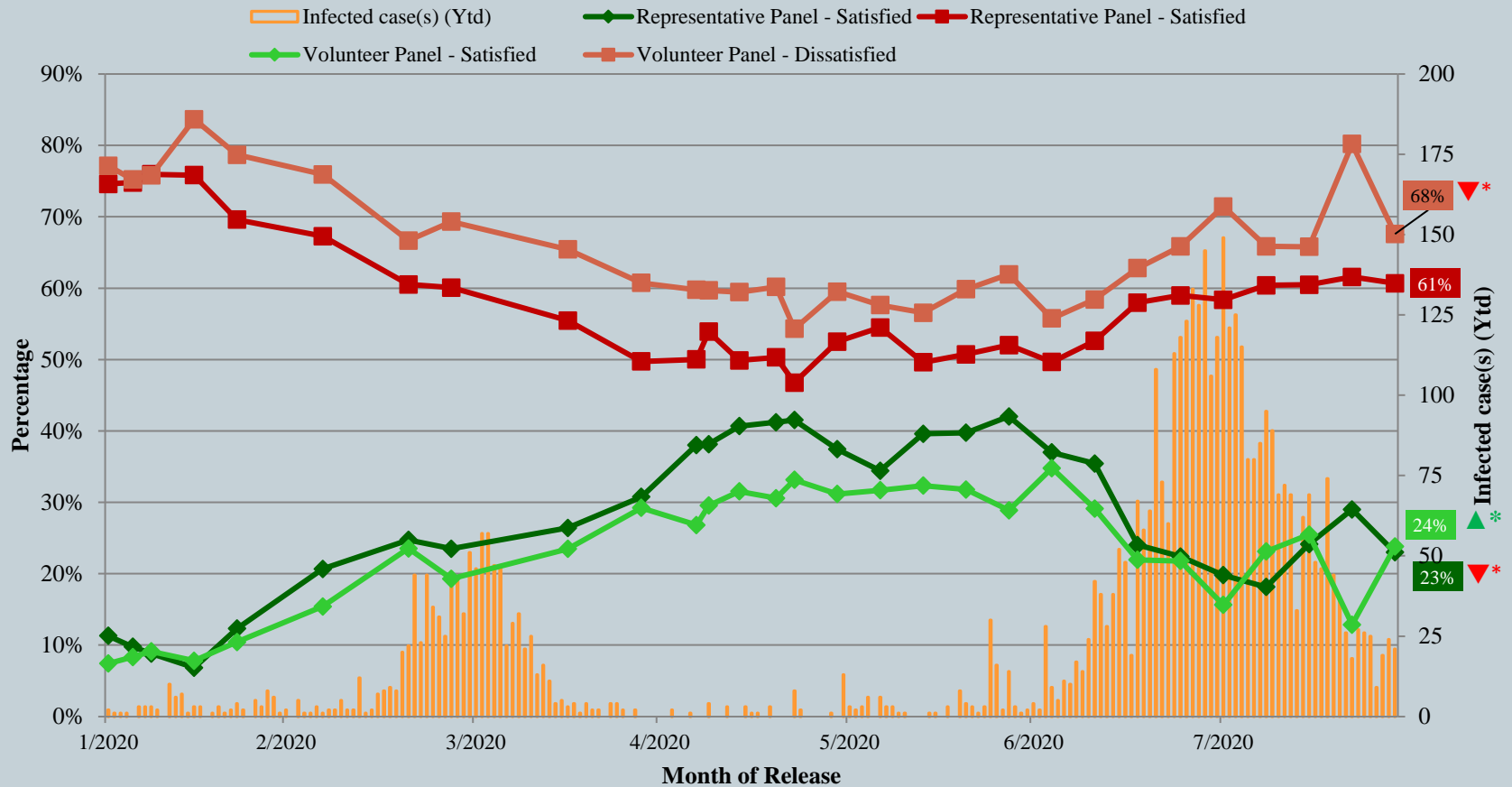
[†] The mean value is calculated by quantifying all individual responses into 1, 2, 3, 4, 5 marks according to their degree of positive level, where 1 is the lowest and 5 the highest, and then calculate the sample mean.

* Significant change

Survey Result - Community Health Module

6

Appraisal of HK Government's performance in handling novel coronavirus pneumonia



^ Answer options included: very much satisfied, somewhat satisfied, half-half, somewhat dissatisfied, very much dissatisfied and don't know / hard to say.

* Significant change

POP



HONG KONG PUBLIC OPINION PROGRAM

HONG KONG PUBLIC OPINION RESEARCH INSTITUTE

香港民意研究所 之 香港民意研究計劃

Community Democracy Project - Community Health Module

Post-Epidemic Normality Resumption Index (PENRI)

Latest Results

August 28, 2020

Contact Information - PENRI

8

	HKPOP Panel
Date of survey	August 24, 3pm – August 27, 3pm
Survey method	Online survey
Target population	Hong Kong residents aged 12+
Total sample size	17,503
Response rate	17.2%
Sampling error	Sampling error of percentages at +/-1% at 95% confidence level
Weighting method	The figures are rim-weighted according to 1) gender-age distribution of Hong Kong population and by District Councils population figures from Census and Statistics Department; 2) Voting results of District Councils Election from Registration and Electoral Office; 3) rating distribution of Chief Executive from regular tracking surveys.

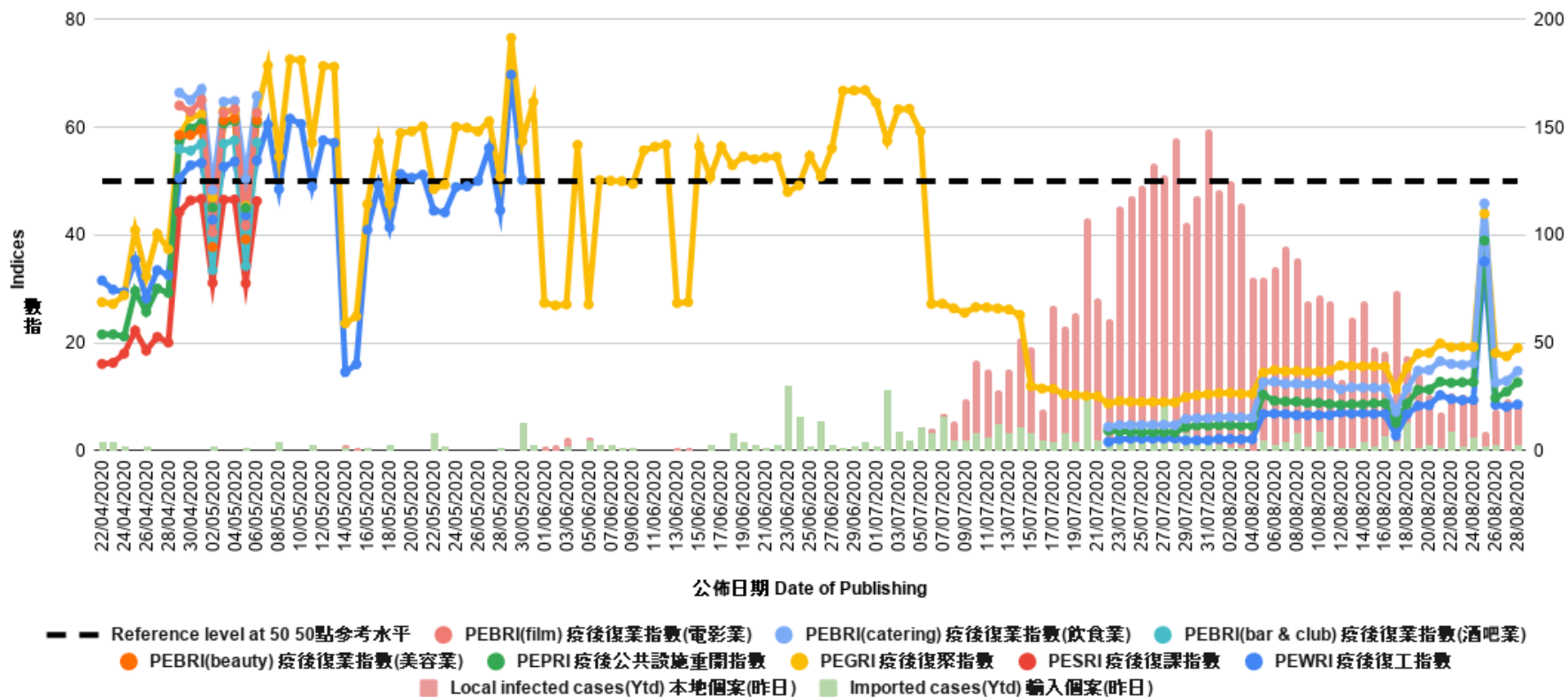
Survey Result - PENRI

9

Date of Publication	12/8	13/8	14/8	15/8	16/8	17/8	18/8	19/8	20/8	21/8	22/8	23/8	24/8	25/8	26/8	27/8	28/8
Imported Cases(Ytd)	1	1	4	2	7	4	13	1	3	1	9	2	6	2	3	0	3
Local Infection Cases(Ytd)	32	61	65	46	39	70	31	35	23	17	18	24	19	7	16	24	18
Post-Epidemic Work Resumption Index (PEWRI)	7.1	6.9	7.0	6.9	6.9	2.8	6.8	8.3	8.5	10.3	9.6	9.4	9.4	35.1	8.5	8.2	8.6
Post-Epidemic Public-Facilities Re-open Index (PEPRI)	8.5	8.6	8.6	8.8	8.8	5.2	8.7	11.3	11.4	12.8	12.6	12.7	12.8	39.0	9.8	11.0	12.7
Post-Epidemic Gathering Resumption Index (PEGRI)	15.8	15.7	15.7	15.7	15.6	11.5	15.5	18.0	18.1	19.9	19.2	19.3	19.3	44.0	18.1	17.5	19.1
Post-Epidemic Business Resumption Index (PEBRI) (catering)	11.4	11.8	11.8	11.7	11.6	7.3	11.5	14.9	15.0	16.6	16.1	16.0	16.2	45.9	12.6	13.0	14.8

Survey Result - PENRI

10



POP



HONG KONG PUBLIC OPINION PROGRAM

HONG KONG PUBLIC OPINION RESEARCH INSTITUTE

香港民意研究所 之 香港民意研究計劃

“We Hongkongers” Panel Survey

Latest Results

August 28, 2020

Contact Information - “We Hongkongers” Panel Survey

12

	HKPOP Panel
Date of survey	August 24, 3pm – August 27, 3pm
Survey method	Online survey
Target population	Hong Kong residents aged 12+
Total sample size	17,460
Response rate	17.1%
Sampling error	Sampling error of percentages at +/-1% at 95% confidence level
Weighting method	Rim-weighted according to 1) gender-age distribution, educational attainment (highest level attended) distribution, economic activity status distribution of Hong Kong population and by District Councils population figures from Census and Statistics Department; 2) Voting results of District Councils Election from Registration and Electoral Office; 3) rating distribution of Chief Executive from regular tracking surveys.

Survey Result - “We Hongkongers” Panel Survey

13

- **Latest Date of survey: 24-27/8/2020**
- **Question: Which of the following ways should LegCo members of the democratic camp handle the controversy of staying or leaving LegCo? (Multiple response)**

	Pro-democracy camp supporters (n=14,563)	Non-pro-democracy camp supporters* (n=1,491)	Combined^ (n=16,054)
Everybody stays	27%	20%	24%
Everybody leaves	50%	58%	54%
Some stay some leave, decided collectively by the democrats	16%	7%	12%
Individual councillors decide	11%	17%	14%
Others (e.g. Polling, Referendum, Everyone leaves except the 4 who had been DQ)	9%	2%	6%
Don't know / hard to say	2%	2%	2%

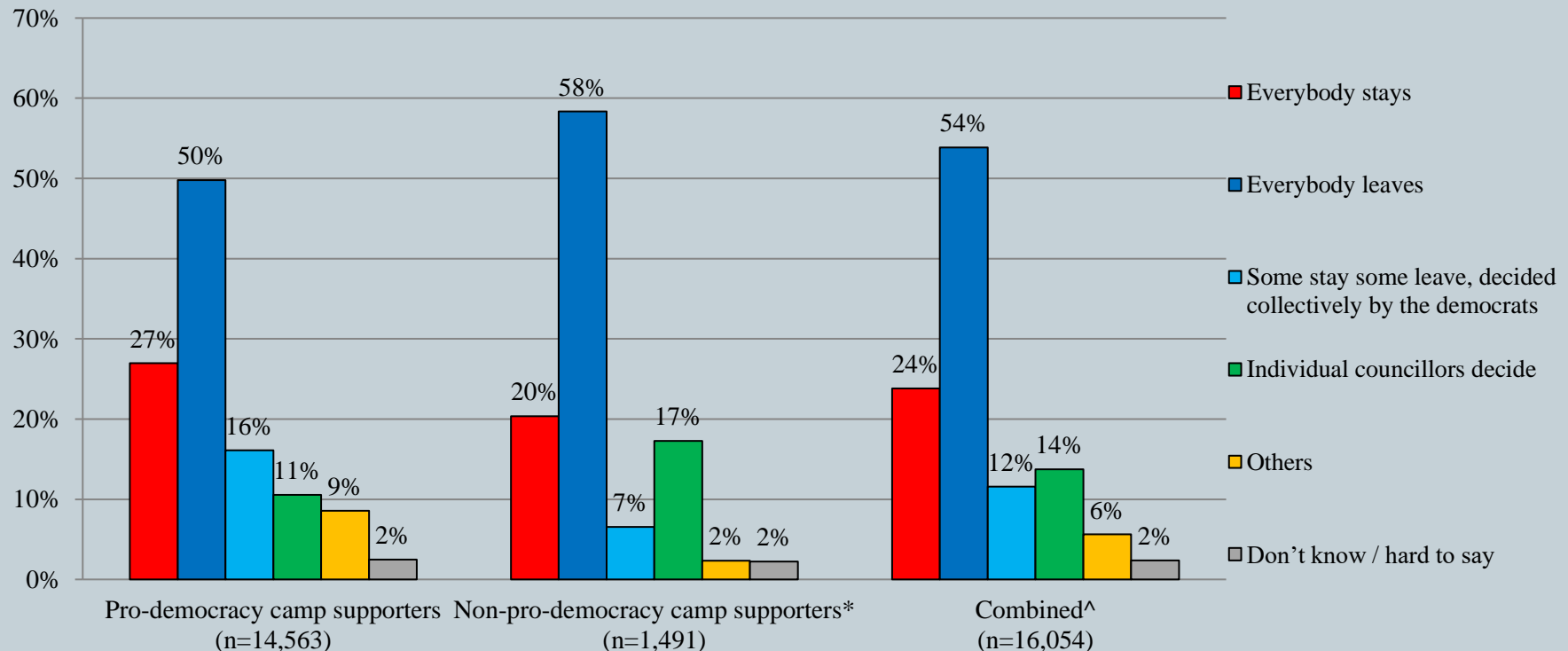
* Include: pro-establishment camp supporters, centrist supporters, no political inclination / politically neutral / do not belong to any camp

^ The aggregated figures come from adjusting the by-group weighted figures using ratio of “pan-democratic” vs “non-pan-democratic” collected in regular tracking survey.

Survey Result - “We Hongkongers” Panel Survey

14

- **Latest Date of survey: 24-27/8/2020**
- **Question: Which of the following ways should LegCo members of the democratic camp handle the controversy of staying or leaving LegCo? (Multiple response)**



* Include: pro-establishment camp supporters, centrist supporters, no political inclination / politically neutral / do not belong to any camp

^ The aggregated figures come from adjusting the by-group weighted figures using ratio of “pan-democratic” vs “non-pan-democratic” collected in regular tracking survey.

Survey Result - “We Hongkongers” Panel Survey

15

- **Latest Date of survey: 24-27/8/2020**
- **Question: Which of the following ways should LegCo members of the democratic camp handle the controversy of staying or leaving LegCo?**

	Pro-democracy camp supporters (n=14,563)	Non-pro-democracy camp supporters* (n=1,491)	Combined^ (n=16,054)
Only choose: Everybody stays	22%	16%	19%
Only choose: Everybody leaves	42%	55%	48%
Only choose: Some stay some leave, decided collectively by the democrats	9%	5%	7%
Only choose: Individual councillors decide	7%	15%	11%
Only choose: Others (e.g. Polling, Referendum, Everyone leaves except the 4 who had been DQ)	4%	1%	3%
Choose more than one options	13%	6%	10%
Don't know / hard to say	2%	2%	2%
Total	100%	100%	100%

* Include: pro-establishment camp supporters, centrist supporters, no political inclination / politically neutral / do not belong to any camp

^ The aggregated figures come from adjusting the by-group weighted figures using ratio of “pan-democratic” vs “non-pan-democratic” collected in regular tracking survey.