

POP



HONG KONG PUBLIC OPINION PROGRAM

HONG KONG PUBLIC OPINION RESEARCH INSTITUTE

香港民意研究所 之 香港民意研究計劃

Community Democracy Project -

Community Health Module

Latest Results

August 21, 2020

Contact Information - Community Health Module

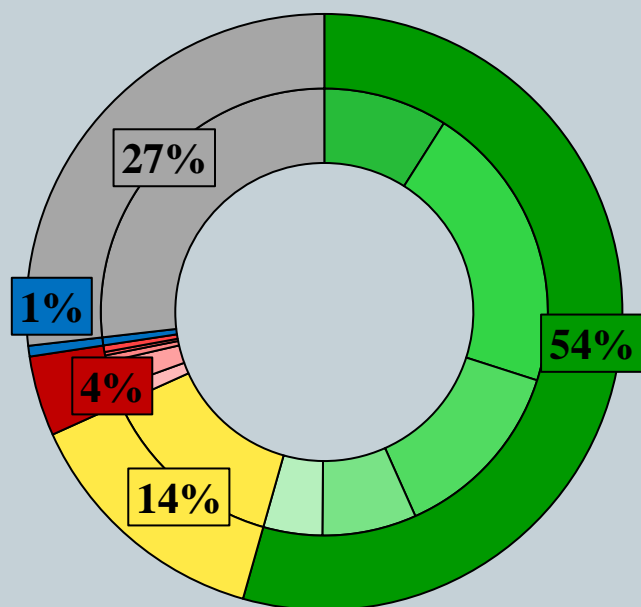
2

| | HKPOP Panel | |
|-------------------|--|--|
| Date of survey | August 13, 3pm – August 20, 3pm | |
| Survey method | Online survey | |
| Target population | Hong Kong residents aged 12+ | |
| | Representative Panel | Volunteer Panel |
| Total sample size | 1,128 | 25,969 |
| Response rate | 14.4% | 33.1% |
| Sampling error | Sampling error of percentages at +/-3% at 95% confidence level | Sampling error of percentages at +/-1% at 95% confidence level |
| Weighting method | The figures are rim-weighted according to 1) gender-age distribution of Hong Kong population and by District Councils population figures from Census and Statistics Department; 2) Voting results of District Councils Election from Registration and Electoral Office; 3) rating distribution of Chief Executive from regular tracking surveys. | |

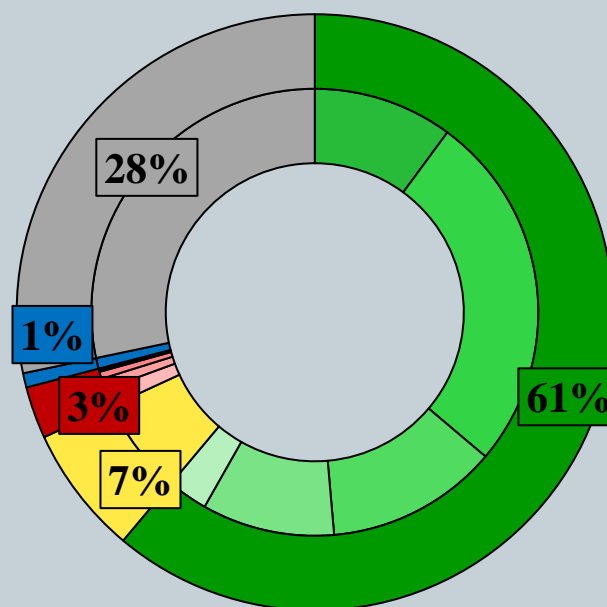
Survey Result - Community Health Module

3

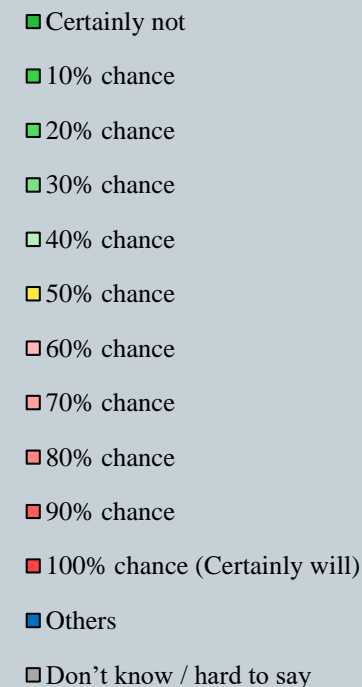
- Latest survey period: 13-20/8/2020
- Question: How likely do you think it is that you will contract novel coronavirus pneumonia over the next one month?



Representative Panel

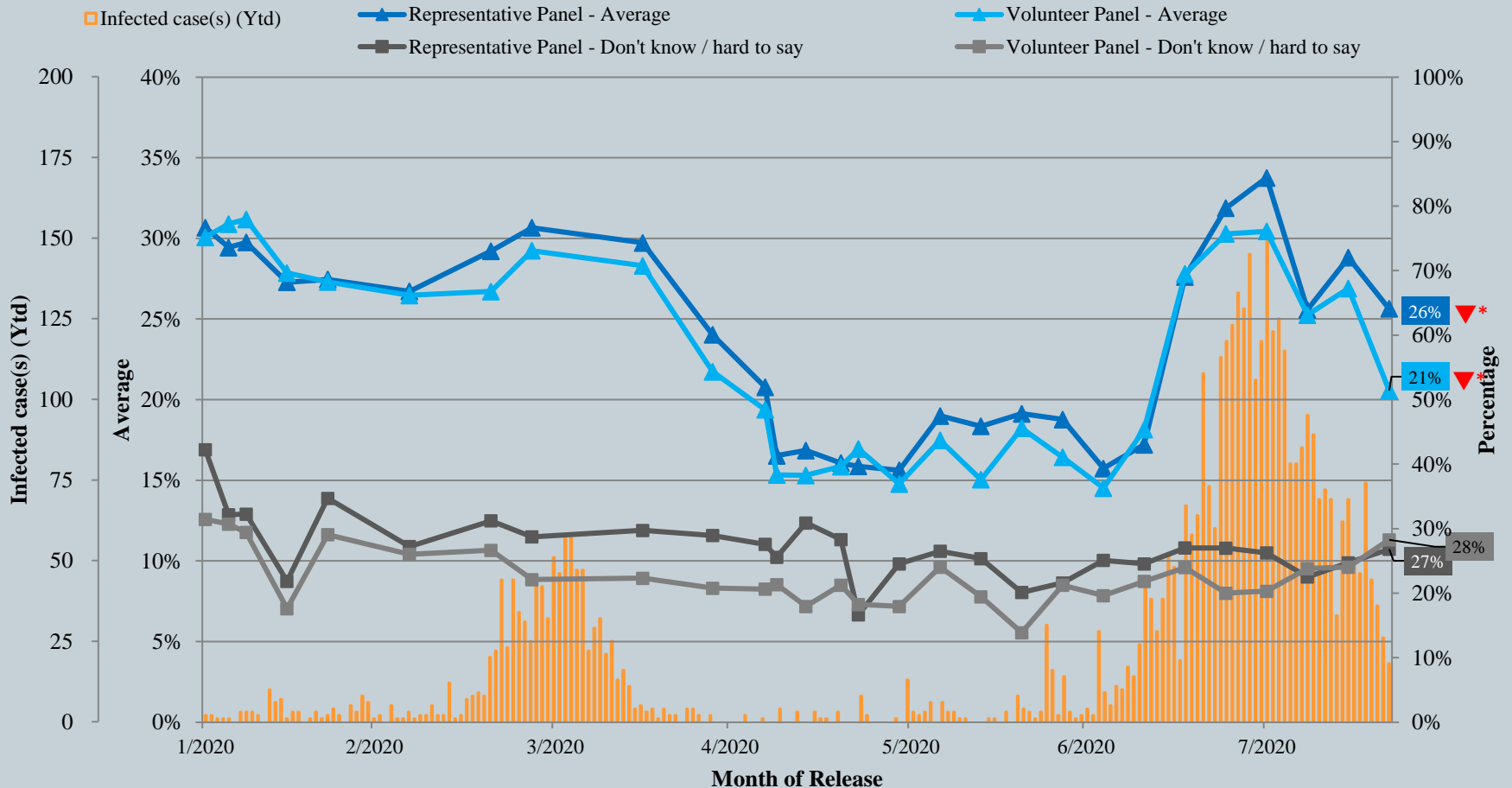


Volunteer Panel



Survey Result - Community Health Module

Assessment of the public's expected chance of COVID-19 infection



^ Answer options included: 0-10 rating scale, others and don't know / hard to say.

* Significant change

Survey Result - Community Health Module

5

- Latest survey period: 13-20/8/2020
- Last survey period: 6-13/8/2020 (*Representative Panel N=768 Volunteer Panel N=7,856*)

| Opinion Question [^] | | Representative Panel (N=1,126) | | | | Volunteer Panel (N=25,945) | | | |
|---|--------|--------------------------------|-----------|--------------|-------------------|----------------------------|-----------|---------------|-------------------|
| | | Satisfied | Half-half | Dissatisfied | Mean [†] | Satisfied | Half-half | Dissatisfied | Mean [†] |
| Q2 How satisfied or dissatisfied are you with the government's performance in handling novel coronavirus pneumonia? | Latest | 29% ▲* | 9% ▼* | 62% | 2.3 ▲* | 13% ▼* | 7% ▼* | 80% ▲* | 1.7 ▼* |
| | Last | 24% | 15% | 60% | 2.2 | 25% | 9% | 66% | 2.1 |

[^] Answer options included: very much satisfied, somewhat satisfied, half-half, somewhat dissatisfied, very much dissatisfied and don't know / hard to say

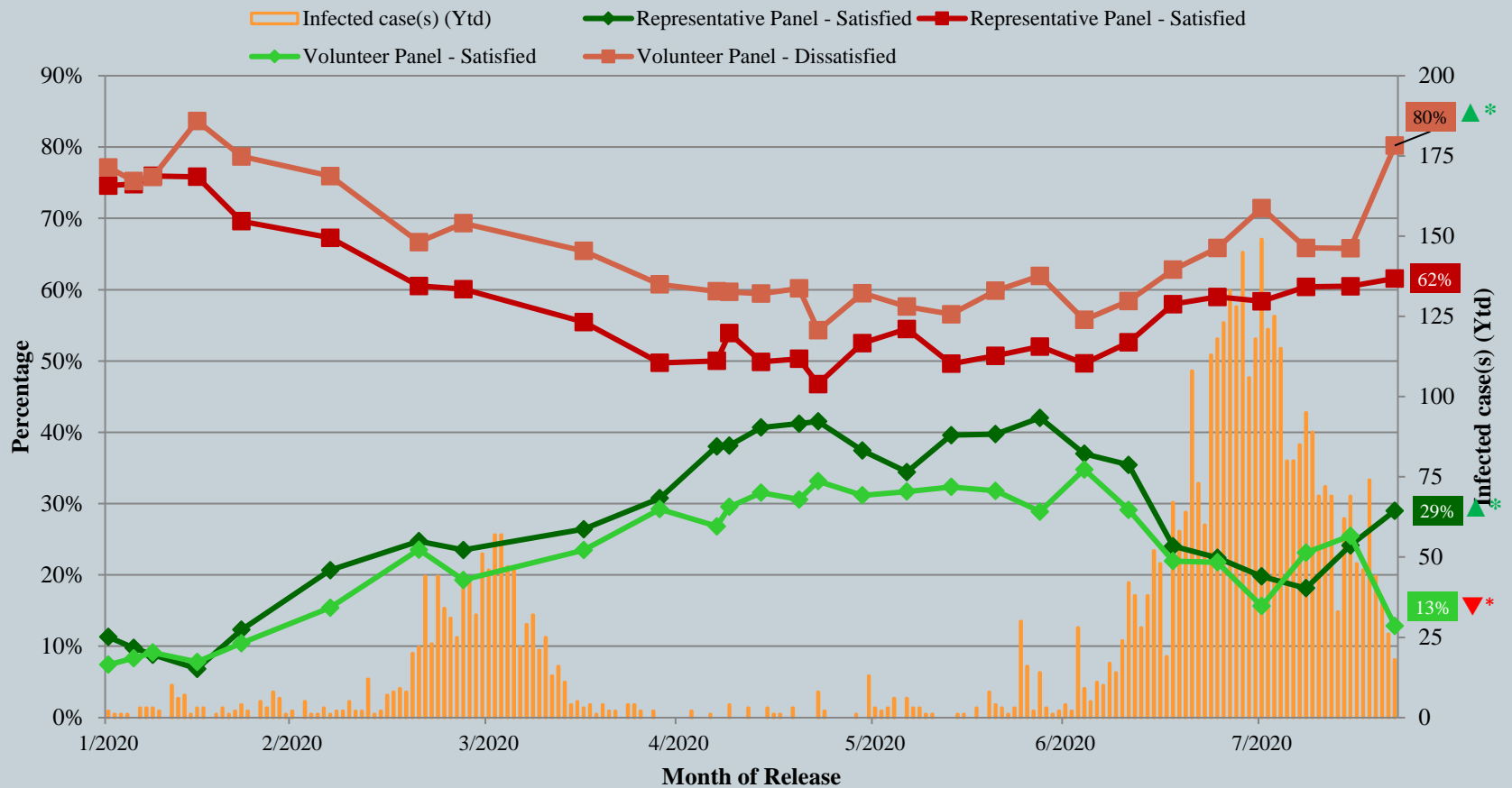
[†] The mean value is calculated by quantifying all individual responses into 1, 2, 3, 4, 5 marks according to their degree of positive level, where 1 is the lowest and 5 the highest, and then calculate the sample mean.

* Significant change

Survey Result - Community Health Module

6

Appraisal of HK Government's performance in handling novel coronavirus pneumonia



^ Answer options included: very much satisfied, somewhat satisfied, half-half, somewhat dissatisfied, very much dissatisfied and don't know / hard to say.

* Significant change

POP



HONG KONG PUBLIC OPINION PROGRAM

HONG KONG PUBLIC OPINION RESEARCH INSTITUTE

香港民意研究所 之 香港民意研究計劃

Community Democracy Project - Community Health Module

Post-Epidemic Normality Resumption Index (PENRI)

Latest Results

August 21, 2020

Contact Information - PENRI

8

| | HKPOP Panel |
|-------------------|--|
| Date of survey | August 17, 3pm – August 20, 3pm |
| Survey method | Online survey |
| Target population | Hong Kong residents aged 12+ |
| Total sample size | 13,089 |
| Response rate | 16.1% |
| Sampling error | Sampling error of percentages at +/-1% at 95% confidence level |
| Weighting method | The figures are rim-weighted according to 1) gender-age distribution of Hong Kong population and by District Councils population figures from Census and Statistics Department; 2) Voting results of District Councils Election from Registration and Electoral Office; 3) rating distribution of Chief Executive from regular tracking surveys. |

調查結果 - 疫後復常指數

9

| Date of Publication | 5/8 | 6/8 | 7/8 | 8/8 | 9/8 | 10/8 | 11/8 | 12/8 | 13/8 | 14/8 | 15/8 | 16/8 | 17/8 | 18/8 | 19/8 | 20/8 | 21/8 |
|--|------|------|------|------|------|------|------|------|------|------|------|------|------|------|------|------|------|
| Imported Cases(Ytd) | 5 | 3 | 4 | 8 | 2 | 9 | 2 | 1 | 1 | 4 | 2 | 7 | 4 | 13 | 1 | 3 | 1 |
| Local Infection Cases(Ytd) | 75 | 82 | 91 | 81 | 67 | 63 | 67 | 32 | 61 | 65 | 46 | 39 | 70 | 31 | 35 | 23 | 17 |
| Post-Epidemic Work Resumption Index (PEWRI) | 6.8 | 6.9 | 6.8 | 6.6 | 6.6 | 6.6 | 6.6 | 7.1 | 6.9 | 7.0 | 6.9 | 6.9 | 2.8 | 6.8 | 8.3 | 8.5 | 10.3 |
| Post-Epidemic Public-Facilities Re-open Index (PEPRI) | 10.4 | 9.3 | 9.1 | 9.1 | 8.9 | 8.9 | 8.7 | 8.5 | 8.6 | 8.6 | 8.8 | 8.8 | 5.2 | 8.7 | 11.3 | 11.4 | 12.8 |
| Post-Epidemic Gathering Resumption Index (PEGRI) | 14.5 | 15.0 | 14.8 | 14.8 | 14.6 | 14.7 | 14.9 | 15.8 | 15.7 | 15.7 | 15.7 | 15.6 | 11.5 | 15.5 | 18.0 | 18.1 | 19.9 |
| Post-Epidemic Business Resumption Index (PEBRI) (catering) | 12.7 | 12.8 | 12.4 | 12.4 | 12.4 | 12.4 | 12.4 | 11.4 | 11.8 | 11.8 | 11.7 | 11.6 | 7.3 | 11.5 | 14.9 | 15.0 | 16.6 |

Survey Result - PENRI

10



POP



HONG KONG PUBLIC OPINION PROGRAM

HONG KONG PUBLIC OPINION RESEARCH INSTITUTE

香港民意研究所 之 香港民意研究計劃

“We Hongkongers” Panel Survey

Latest Results

August 21, 2020

Contact Information - “We Hongkongers” Panel Survey

12

| | Online Survey | Telephone Survey |
|-------------------|---|--|
| Date of survey | August 17, 3pm – August 20, 3pm | August 17 – August 20 |
| Survey method | Online survey | Random telephone survey conducted by real interviewers |
| Target population | Hong Kong residents aged 12+ | Hong Kong residents aged 18+ |
| Total sample size | 26,984 | 1,020 |
| Response rate | 31.3% | 60.9% |
| Sampling error | Sampling error of percentages at +/-1% at 95% confidence level | Sampling error of percentages at +/-1% at 95% confidence level |
| Weighting method | Rim-weighted according to 1) gender-age distribution, educational attainment (highest level attended) distribution, economic activity status distribution of Hong Kong population and by District Councils population figures from Census and Statistics Department; 2) Voting results of District Councils Election from Registration and Electoral Office; 3) rating distribution of Chief Executive from regular tracking surveys. | Rim-weighted according to figures provided by the Census and Statistics Department. The gender-age distribution of the Hong Kong population came from “Mid-year population for 2019”, while the educational attainment (highest level attended) distribution and economic activity status distribution came from “Women and Men in Hong Kong - Key Statistics (2019 Edition)”. |

Survey Result - “We Hongkongers” Panel Survey

13

- Latest Date of survey: 17-20/8/2020
- **Question: The NPCSC has decided that the current Legislative Council shall continue to discharge duties for no less than one year. How much do you support or oppose all members of the Legislative Council in continuing to serve?**

| | Pro-democracy camp supporters (n=21,367) | Non-pro-democracy camp supporters* (n=1,705) | Combined^ (n=23,072) | POP telephone survey results (n=1,012) |
|-----------------------------|---|---|-------------------------|---|
| Support | 20% | 50% | 35% | 37% |
| Half-half | 13% | 17% | 15% | 16% |
| Oppose | 63% | 31% | 47% | 41% |
| Don't know / Hard to say | 3% | 2% | 3% | 6% |
| Mean† | 2.2 | 3.2 | 2.7 | 2.8 |

* Include: pro-establishment camp supporters, centrist supporters, no political inclination / politically neutral / do not belong to any camp

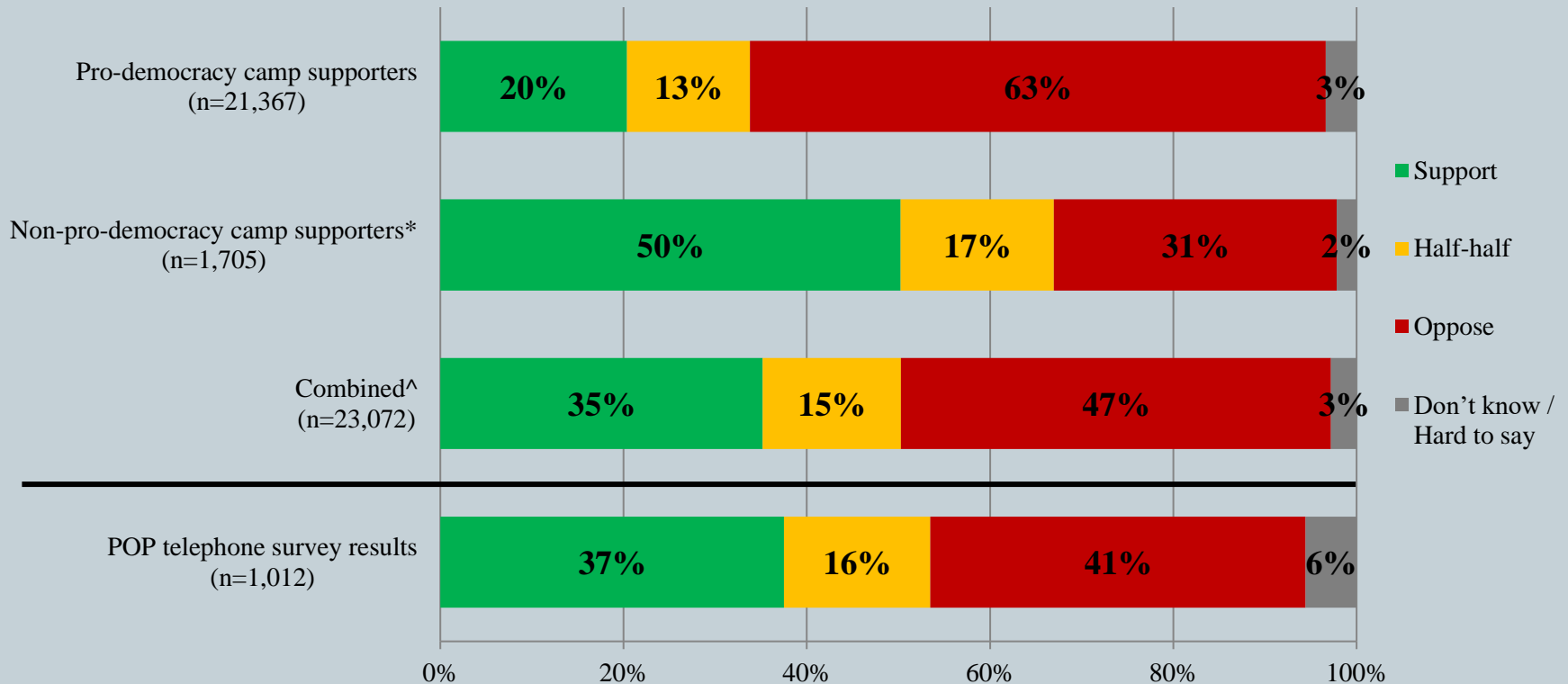
^ The aggregated figures come from adjusting the by-group weighted figures using ratio of “pan-democratic” vs “non-pan-democratic” collected in regular tracking survey.

† The mean value is calculated by quantifying all individual responses into 1, 2, 3, 4, 5 marks according to their degree of positive level, where 1 is the lowest and 5 the highest, and then calculate the sample mean.

Survey Result - “We Hongkongers” Panel Survey

14

- **Latest Date of survey: 17-20/8/2020**
- **Question: The NPCSC has decided that the current Legislative Council shall continue to discharge duties for no less than one year. How much do you support or oppose all members of the Legislative Council in continuing to serve?**



* Include: pro-establishment camp supporters, centrist supporters, no political inclination / politically neutral / do not belong to any camp

^ The aggregated figures come from adjusting the by-group weighted figures using ratio of “pan-democratic” vs “non-pan-democratic” collected in regular tracking survey.

Survey Result - “We Hongkongers” Panel Survey

15

- **Latest Date of survey: 17-20/8/2020**
- **Question: Recently some suggested to implement a “Hong Kong Health Code” system, allowing only people with negative test results for novel coronavirus pneumonia to enter restaurants, shopping malls or public areas. How much do you support or oppose this suggestion?**

| | Pro-democracy camp supporters (n=21,345) | Non-pro-democracy camp supporters* (n=1,700) | Combined^ (n=23,045) | POP telephone survey results (n=1,018) |
|-----------------------------|--|--|-------------------------|--|
| Support | 1% | 29% | 15% | 23% |
| Half-half | 3% | 13% | 8% | 9% |
| Oppose | 96% | 55% | 76% | 64% |
| Don't know / Hard to say | 1% | 2% | 1% | 4% |
| Mean† | 1.2 | 2.4 | 1.8 | 2.2 |

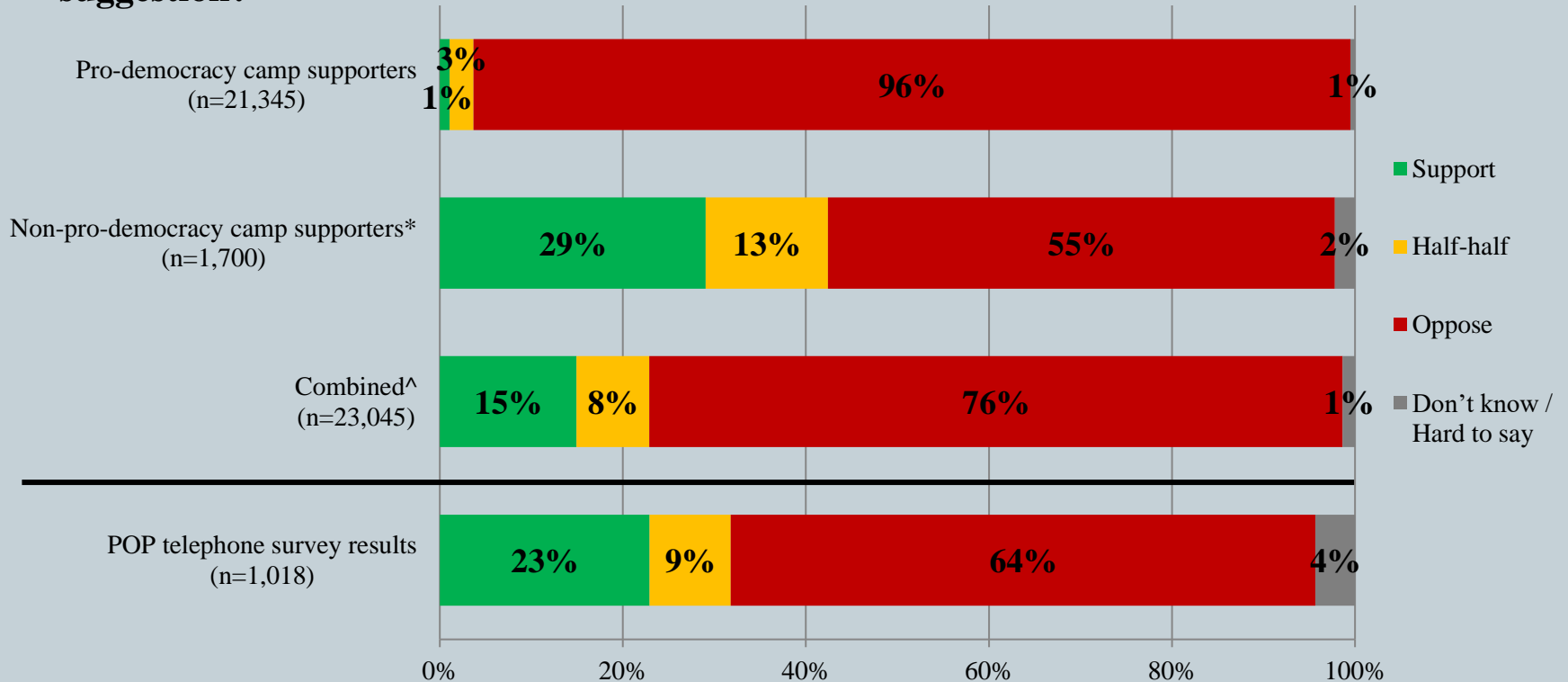
* Include: pro-establishment camp supporters, centrist supporters, no political inclination / politically neutral / do not belong to any camp

^ The aggregated figures come from adjusting the by-group weighted figures using ratio of “pan-democratic” vs “non-pan-democratic” collected in regular tracking survey.

† The mean value is calculated by quantifying all individual responses into 1, 2, 3, 4, 5 marks according to their degree of positive level, where 1 is the lowest and 5 the highest, and then calculate the sample mean.

Survey Result - “We Hongkongers” Panel Survey

- **Latest Date of survey: 17-20/8/2020**
- **Question: Recently some suggested to implement a “Hong Kong Health Code” system, allowing only people with negative test results for novel coronavirus pneumonia to enter restaurants, shopping malls or public areas. How much do you support or oppose this suggestion?**



* Include: pro-establishment camp supporters, centrist supporters, no political inclination / politically neutral / do not belong to any camp

^ The aggregated figures come from adjusting the by-group weighted figures using ratio of “pan-democratic” vs “non-pan-democratic” collected in regular tracking survey.