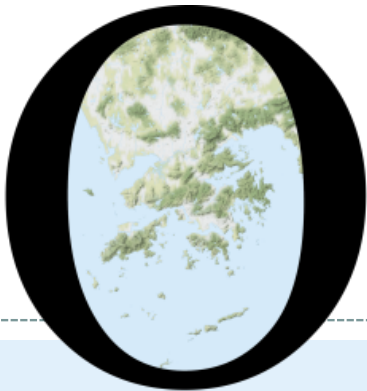


POP



HONG KONG PUBLIC OPINION PROGRAM

HONG KONG PUBLIC OPINION RESEARCH INSTITUTE

香港民意研究所 之 香港民意研究計劃

Latest Tracking Poll Results

October 27, 2020

Contact Information

2

- Date of survey: 19-22/10/2020
- Survey method: Random telephone survey conducted by real interviewers
- Target population: Cantonese-speaking Hong Kong residents aged 18+
- Sample size: 1,020 (including 508 landline and 512 mobile samples)
- Effective response rate: 62.2%
- Sampling error: Sampling error of percentages not more than +/-4%, that of net values not more than +/-7% and that of ratings not more than +/-2.1 at 95% conf. level
- Weighting method: Rim-weighted according to figures provided by the Census and Statistics Department. The gender-age distribution of the Hong Kong population came from “Mid-year population for 2019”, while the educational attainment (highest level attended) distribution and economic activity status distribution came from “Women and Men in Hong Kong - Key Statistics (2019 Edition)”.

Survey Topic

3

- Popularity of Chief Executive
- Popularity of HKSAR Government
 - People's satisfaction with the HKSAR Government
 - People's trust in the HKSAR Government
 - People's appraisals of society's conditions
- Core Social Indicators
 - Degree of prosperity
 - Degree of freedom
 - Degree of stability
 - Degree of democracy
 - Compliance with the rule of law
- Public Sentiment Index

Survey Result - Popularity of Chief Executive

4

● Popularity of Chief Executive

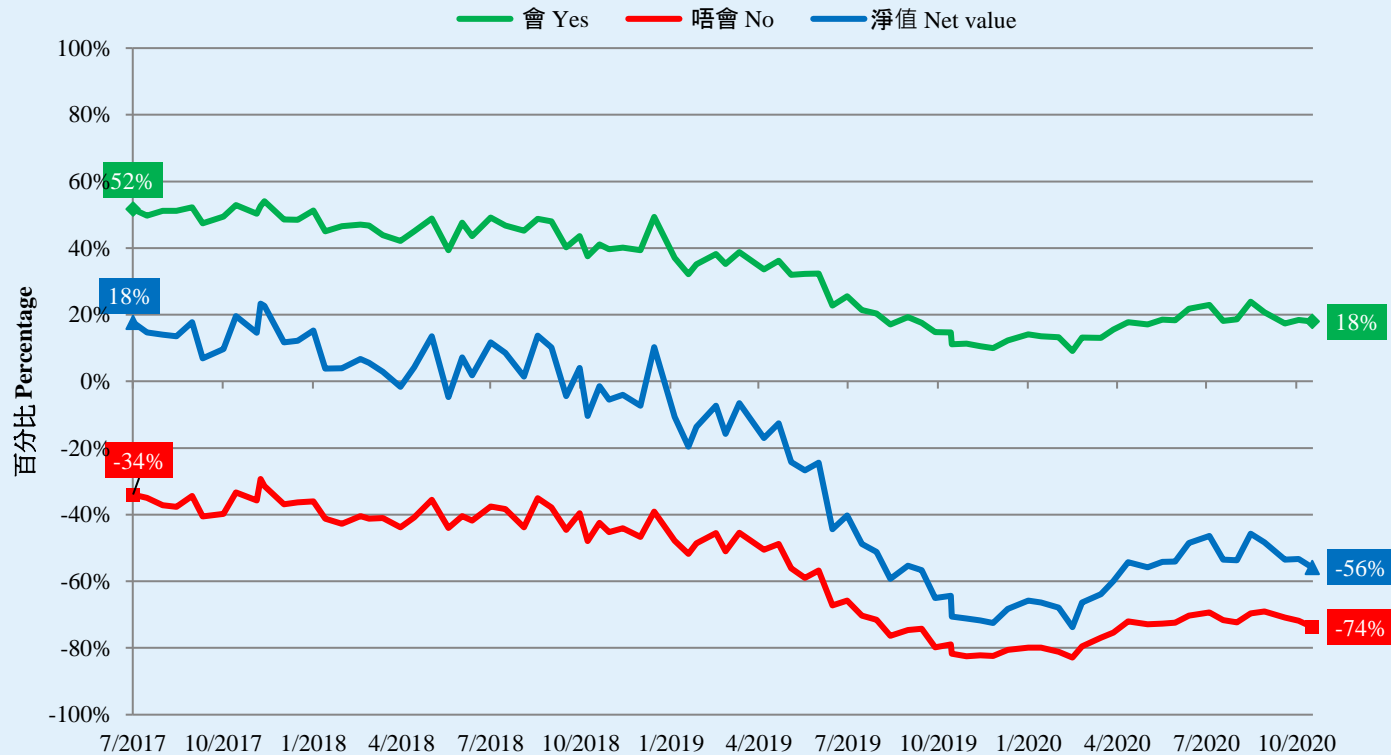
		5-8/10/2020	19-22/10/2020	Change	Record
CE Carrie Lam	Rating	28.6	27.2	▼1.3	Record low since Aug. 2020
	Approval	18%	18%	▼1%	Record low since Sept. 2020
	Disapproval	72%	74%	▲2%	Record high since Mar. 2020
	Net approval rate	-53%	-56%	▼3%	Record low since Mar. 2020

- Our latest survey shows that the popularity rating of CE Carrie Lam now stands at 27.2 marks, and 49% of the sample gave her 0 mark. Her latest approval rate is 18%, disapproval rate 74%, giving a net popularity of negative 56 percentage points. All popularity figures have not changed much from 2 weeks ago.

Survey Result - Popularity of Chief Executive

5

市民對林鄭月娥出任特首的假設投票結果 (按次計算)
Hypothetical Voting for Carrie Lam as the Chief Executive (Per Poll)
(7/2017 – 10/2020)



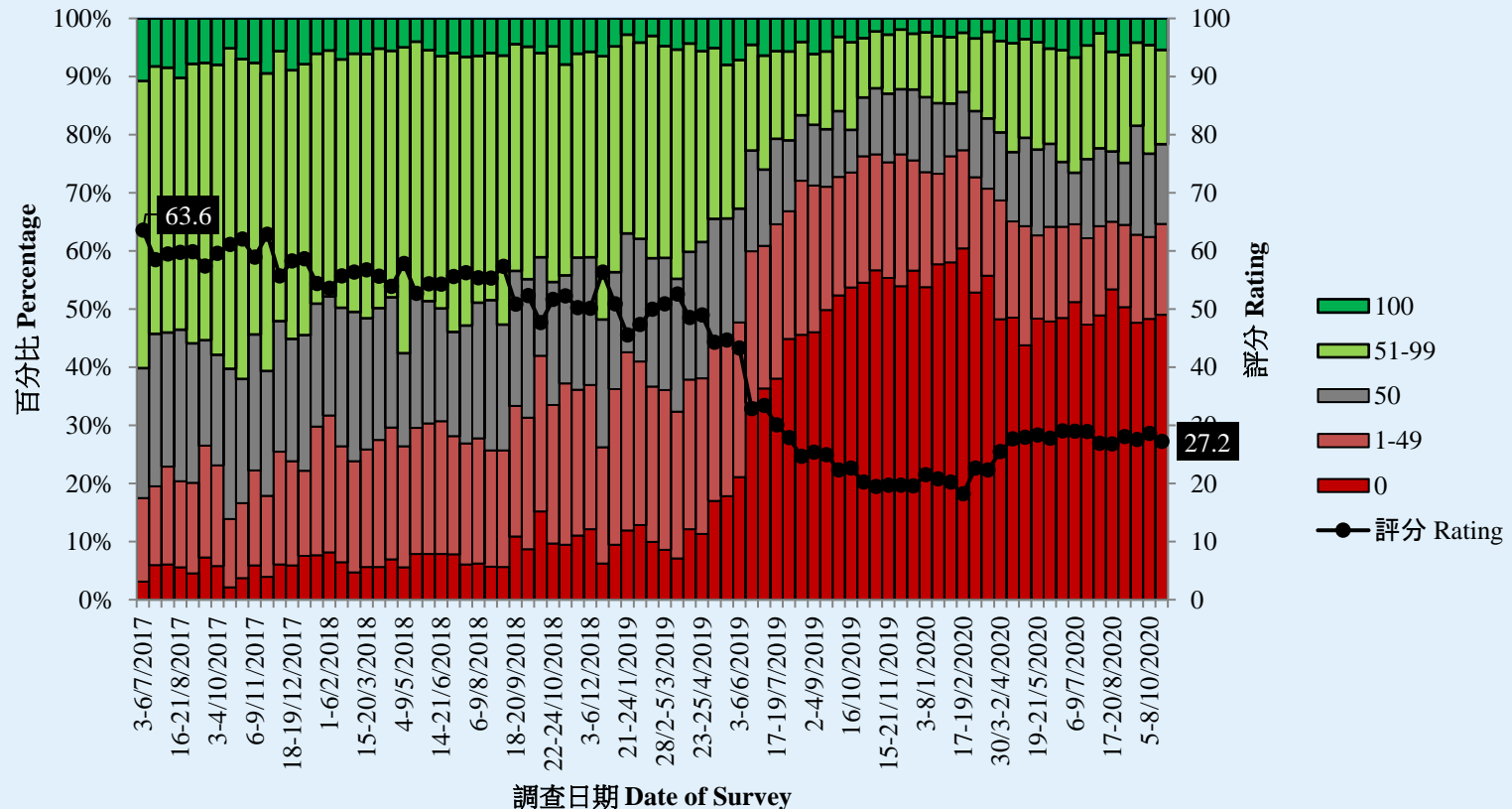
調查月份 Month of Survey

『唔會』百分比以負向表示。
Percentage of 'No' is presented as negative

Survey Result - Popularity of Chief Executive

6

特首林鄭月娥評分 (按次計算)
Rating for Chief Executive Carrie Lam (Per Poll)
(7/2017 – 10/2020)



Survey Topic

9

- Popularity of Chief Executive
- Popularity of HKSAR Government
 - People's satisfaction with the HKSAR Government
 - People's trust in the HKSAR Government
 - People's appraisals of society's conditions
- Core Social Indicators
 - Degree of prosperity
 - Degree of freedom
 - Degree of stability
 - Degree of democracy
 - Compliance with the rule of law
- Public Sentiment Index

Survey Result - Popularity of HKSAR Government

10

● People's satisfaction with the HKSAR Government

	21-24/9/2020	19-22/10/2020	Change	Record
Satisfaction rate	17%	17%	▼<1%	Record low since Jun. 2020
Dissatisfaction rate	63%	69%	▲6% *	Record high since Jun. 2020
Net satisfaction rate	-46%	-52%	▼6%	Record low since Jun. 2020
Mean value	2.1	2.0	▼0.1	Record low since Jun. 2020

- Regarding the HKSAR Government, the latest satisfaction rate is 17%, whereas 69% were dissatisfied, significantly up by 6 percentage points since last time, thus net satisfaction stands at negative 52 percentage points. The mean score is 2.0, meaning “Quite dissatisfied” in general.

* Significant change

Survey Result - Popularity of HKSAR Government

11

● People's trust in the HKSAR Government

	21-24/9/2020	19-22/10/2020	Change	Record
Trust	27%	26%	▼<1%	Record low since Jul. 2020
Distrust	55%	61%	▲6% *	Record high since May 2020
Net trust	-28%	-35%	▼7%	Record low since Jul. 2020
Mean value	2.4	2.3	▼0.1	Record low since Jul. 2020

- Regarding people's trust in the HKSAR Government, 26% of the respondents expressed trust, 61% expressed distrust, significantly up by 6 percentage points since last time. The net trust value is negative 35 percentage points. The mean score is 2.3, meaning between "Quite distrust" and "Half-half" in general.

* Significant change

Survey Result - Popularity of HKSAR Government

12

● People's appraisals of society's conditions

	21-24/9/2020	19-22/10/2020	Change	Record
Livelihood condition	-51%	-54%	▼2%	Record low since Aug. 2020
Economic condition	-57%	-61%	▼4%	Record low since Aug. 2020
Political condition	-65%	-66%	▼2%	Record low since Aug. 2020

- People's net satisfaction rates with the current livelihood, economic and political conditions are negative 54, negative 61 and negative 66 percentage points respectively. These figures stay more or less the same as last month.

Survey Topic

13

- Popularity of Chief Executive
- Popularity of HKSAR Government
 - People's satisfaction with the HKSAR Government
 - People's trust in the HKSAR Government
 - People's appraisals of society's conditions
- Core Social Indicators
 - Degree of prosperity
 - Degree of freedom
 - Degree of stability
 - Degree of democracy
 - Compliance with the rule of law
- Public Sentiment Index

Survey result - Core Social Indicators

14

- **Five core social indicators**

	31/8-4/9/2020	19-22/10/2020	Change	Record
Freedom	4.1	4.6	▲0.5 *	Record high since Aug. 2020
Prosperity	4.1	4.3	▲0.2	Record high since Jul. 2020
Stability	3.6	4.1	▲0.5 *	Record high since Apr. 2020
Rule of law	3.4	3.8	▲0.4 *	Record high since Jul. 2020
Democracy	3.5	3.6	▲0.1	Record high since Aug. 2020

- On a scale of 0 to 10, people’s ratings on all five core social indicators are lower than 5 marks. Ranked from the highest to the lowest are “freedom”, “prosperity”, “stability”, “rule of law” and “democracy”. Compared with a month ago, ratings of “freedom”, “stability” and “rule of law” have increased significantly.

* Significant change

Survey Topic

17

- Popularity of Chief Executive
- Popularity of HKSAR Government
 - People's satisfaction with the HKSAR Government
 - People's trust in the HKSAR Government
 - People's appraisals of society's conditions
- Core Social Indicators
 - Degree of prosperity
 - Degree of freedom
 - Degree of stability
 - Degree of democracy
 - Compliance with the rule of law
- **Public Sentiment Index**

Survey Result - Public Sentiment Index

18

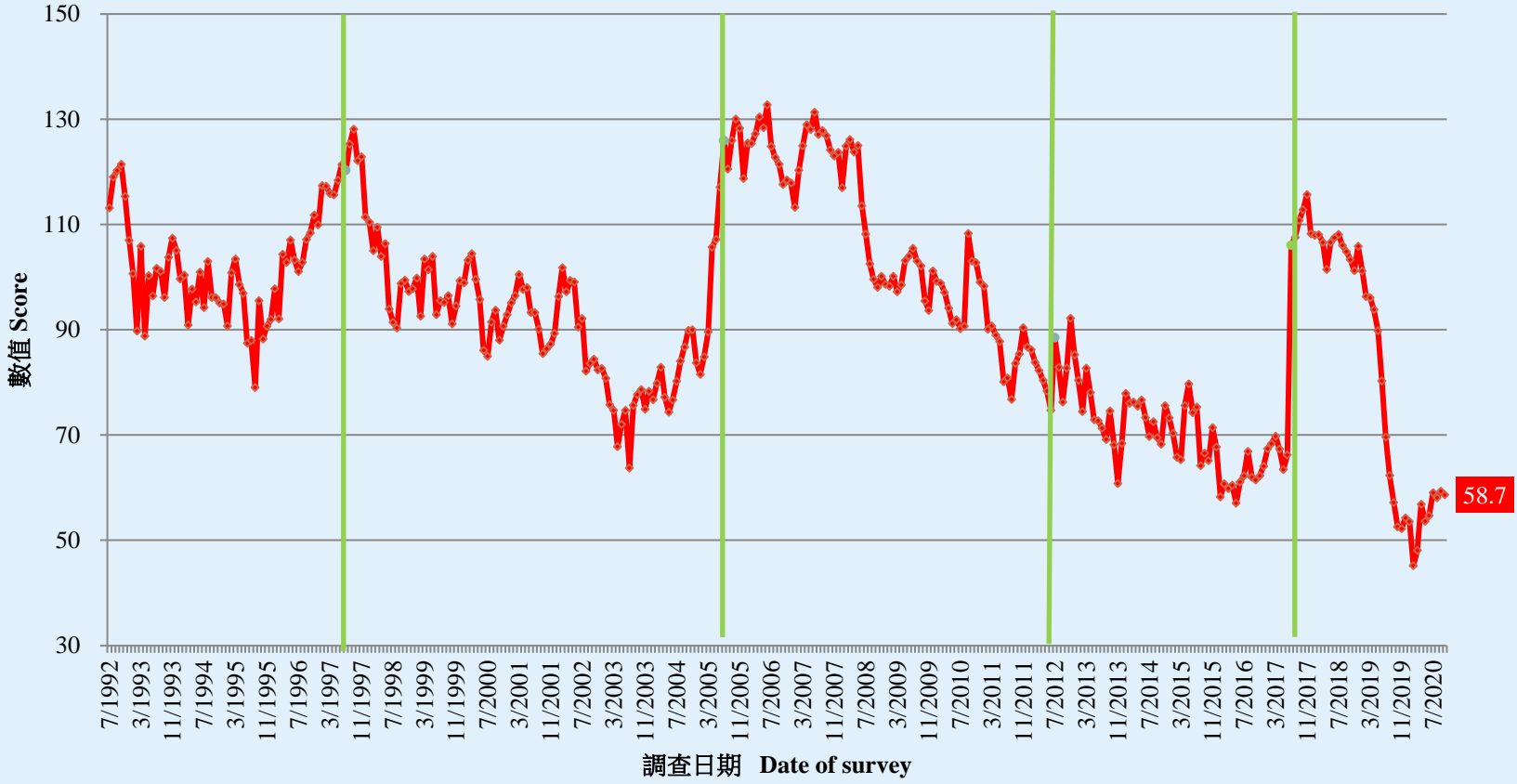
• Public Sentiment Index (PSI)

	8/10/2020	22/10/2020	Change	Record
Public Sentiment Index (PSI)	61.1	56.2	▼4.9	Record low since Jun. 2020
Government Appraisal (GA)	65.8	61.2	▼4.6	Record low since Jun. 2020
Society Appraisal (SA)	57.4	53.2	▼4.2	Record low since Sept. 2020

- All PSI, GA and SA scores range between 0 to 200, with 100 meaning normal.
- The latest PSI stands at 56.2, down by 4.9 points from early October. It can be considered as among the worst 1% across the past 20 years or so. Two component scores of PSI can both be considered as among the worst 1% across the past 20 years or so.

Survey Result - Public Sentiment Index

民情指數 (按月計算)
Public Sentiment Index (monthly average)
(7/1992 - 10/2020)



POP



HONG KONG PUBLIC OPINION PROGRAM

HONG KONG PUBLIC OPINION RESEARCH INSTITUTE

香港民意研究所 之 香港民意研究計劃

Community Democracy Project -

Community Health Module

Latest Results

October 27, 2020

Contact Information - PENRI

21

	HKPOP Panel
Date of survey	October 19, 3pm – October 26, 3pm
Survey method	Online survey
Target population	Hong Kong residents aged 12+
Total sample size	9,331
Response rate	8.8%
Sampling error	Sampling error of percentages at +/-1% at 95% confidence level
Weighting method	The figures are rim-weighted according to 1) gender-age distribution of Hong Kong population and by District Councils population figures from Census and Statistics Department; 2) Voting results of District Councils Election from Registration and Electoral Office; 3) rating distribution of Chief Executive from regular tracking surveys.

Contact Information - PENRI

22

Date of Publication	<u>13/10</u>	<u>14/10</u>	<u>15/10</u>	<u>16/10</u>	<u>17/10</u>	<u>18/10</u>	<u>19/10</u>	<u>20/10</u>	<u>21/10</u>	<u>22/10</u>	<u>23/10</u>	<u>24/10</u>	<u>25/10</u>	<u>26/10</u>	<u>27/10</u>
Imported Cases(Ytd)	6	4	0	8	6	17	2	14	4	7	10	4	4	5	8
Local Infection Cases(Ytd)	5	4	0	4	1	0	2	1	1	1	1	0	1	1	0
Post-Epidemic Gathering Resumption Index (PEGRI)	17.0	34.6	61.1	14.7	34.0	33.1	34.6	15.4	33.9	30.6	18.0	51.2	35.1	31.2	50.8

Contact Information - PENRI

23

