

# POP



---

HONG KONG PUBLIC OPINION PROGRAM

HONG KONG PUBLIC OPINION RESEARCH INSTITUTE

香港民意研究所 之 香港民意研究計劃

---

**Latest Tracking Poll Results**

**Press Release**

**September 15, 2020**

# Contact Information

2

- Date of survey: 31/8-4/9/2020
- Survey method: Random telephone survey conducted by real interviewers
- Target population: Cantonese-speaking Hong Kong residents aged 18+
- Sample size: 1,007 (including 498 landline and 509 mobile samples)
- Effective response: 58.4%
- Sampling error: Sampling error of percentages not more than +/-4%, that of net values not more than +/-7% and that of ratings not more than +/-2.4 at 95% conf. level
- Weighting method: Rim-weighted according to figures provided by the Census and Statistics Department. The gender-age distribution of the Hong Kong population came from “Mid-year population for 2019”, while the educational attainment (highest level attended) distribution and economic activity status distribution came from “Women and Men in Hong Kong - Key Statistics (2019 Edition)”.

# Survey Topic

3

- Core Social Indicators
  - Degree of prosperity
  - Degree of freedom
  - Degree of stability
  - Degree of democracy
  - Compliance with the rule of law

# Survey result - Core Social Indicators

4

- **Five core social indicators**

	3-6/8/2020	31/8-4/9/2020	Change	Record
Degree of prosperity	4.2	4.1	▼<0.1	All-time record low since Jun. 1997
Degree of freedom	4.7	4.1	▼0.6 *	All-time record low since Jun. 1997
Degree of stability	3.8	3.6	▼0.1	All-time record low since Jun. 1997
Degree of democracy	3.7	3.5	▼0.2	All-time record low since Jun. 1997
Compliance with the rule of law	3.8	3.4	▼0.4 *	All-time record low since Jun. 1997

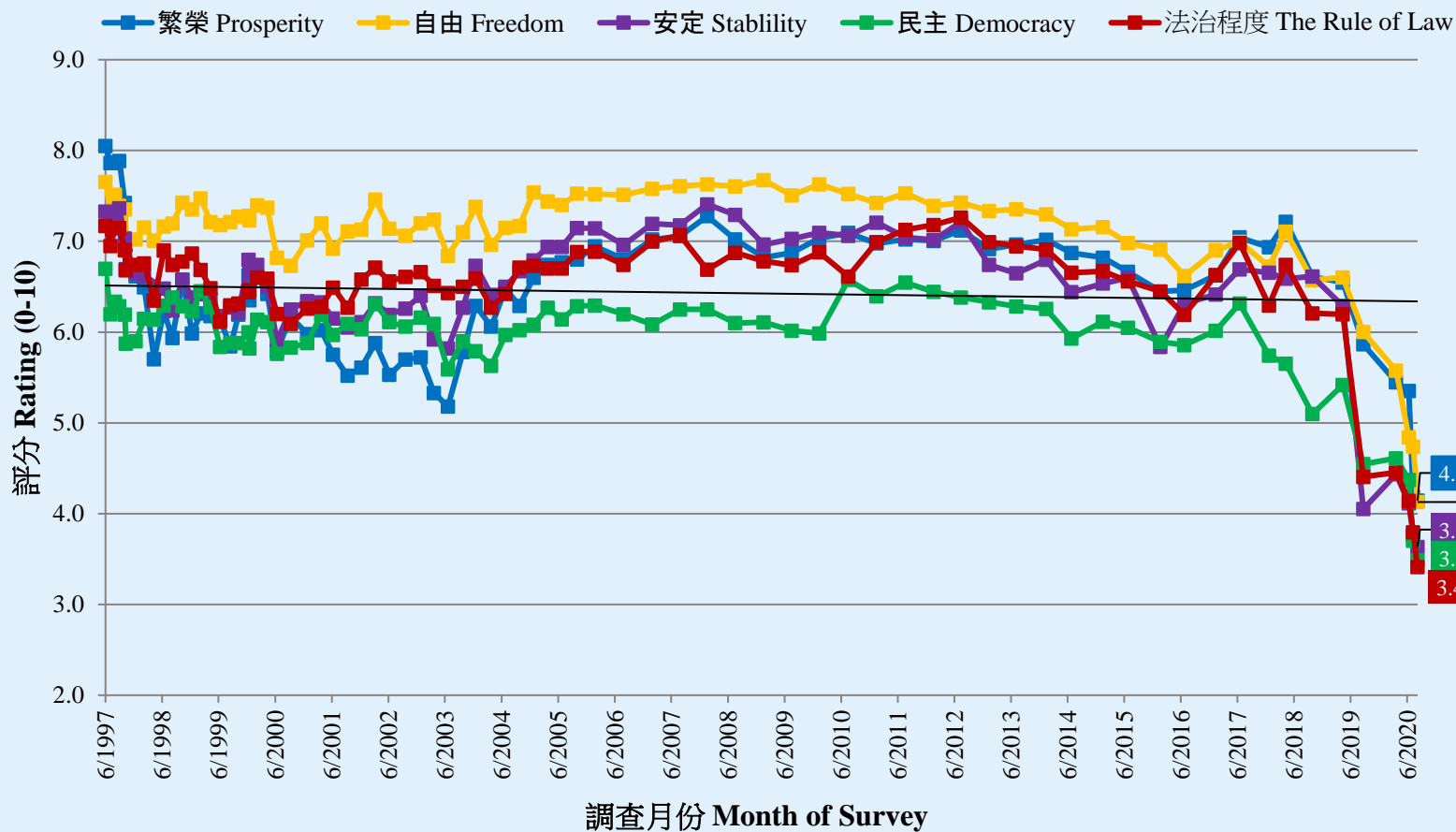
- On a scale of 0 to 10, people's ratings on all five core social indicators are lower than 5 marks. Ranked from the highest to the lowest are "prosperity", "freedom", "stability", "democracy" and "rule of law". Compared with a month ago, ratings of "freedom" and "rule of law" have dropped significantly. Meanwhile, **all five indicators have again registered all-time record lows since the survey began in 1997.**

\* Significant change

# Survey result - Core Social Indicators

5

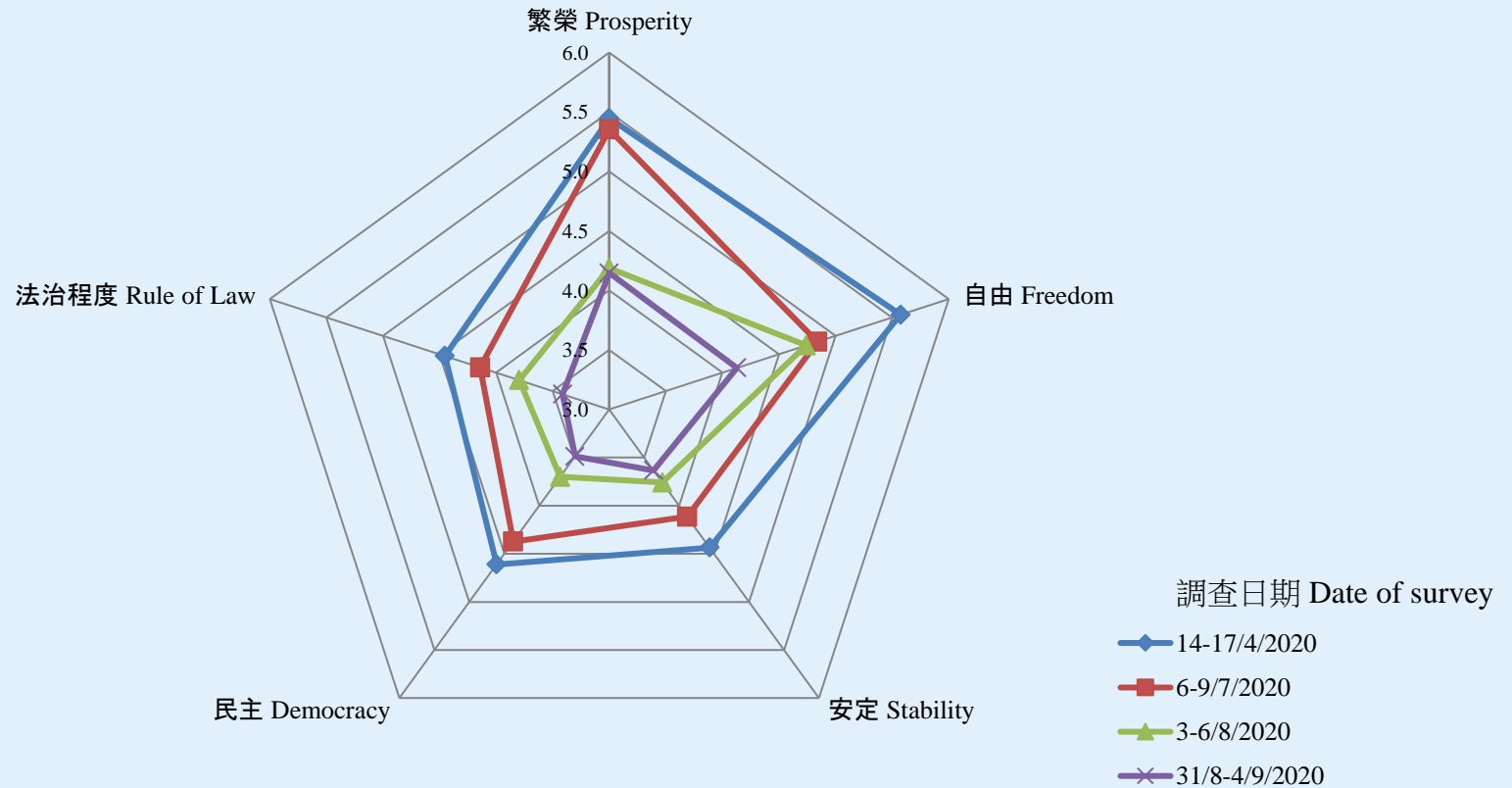
核心社會指標走勢圖表 (按次計算)  
Trend of Core Social Indicators Chart (Per Poll)  
(6/1997 – 9/2020)



# Survey result - Core Social Indicators

6

五項核心社會指標 (指標數字) - 綜合圖表  
Core Social Indicators (Index) - Combined Charts



# POP



---

HONG KONG PUBLIC OPINION PROGRAM

HONG KONG PUBLIC OPINION RESEARCH INSTITUTE

香港民意研究所 之 香港民意研究計劃

---

**Community Democracy Project -**

**Community Health Module**

**Press Release**

**September 15, 2020**

# Contact Information - PENRI

8

	<b>HKPOP Panel</b>
Date of survey	August 31, 3pm – September 14, 3pm
Survey method	Online survey
Target population	Hong Kong residents aged 12+
Total sample size	12,770
Response rate	12.5%
Sampling error	Sampling error of percentages at +/-1% at 95% confidence level
Weighting method	The figures are rim-weighted according to 1) gender-age distribution of Hong Kong population and by District Councils population figures from Census and Statistics Department; 2) Voting results of District Councils Election from Registration and Electoral Office; 3) rating distribution of Chief Executive from regular tracking surveys.



# Survey Result - PENRI

9

Date of Publication	30/8	31/8	1/9	2/9	3/9	4/9	5/9	6/9	7/9	8/9	9/9	10/9	11/9	12/9	13/9	14/9	15/9
Imported Cases(Ytd)	2	5	2	3	0	1	5	0	6	1	3	1	7	9	4	8	2
Local Infection Cases(Ytd)	16	10	7	9	8	7	7	7	15	10	3	5	5	3	9	11	12
Post-Epidemic Work Resumption Index (PEWRI)	8.5	8.4	35.6	10.3	41.1	41.4	10.4	41.3	6.9	10.5	43.9	43.6	15.1	15.1	15.1	11.9	11.9
Post-Epidemic Public-Facilities Re-open Index (PEPRI)	12.5	12.5	38.3	13.7	40.8	41.4	14.7	41.3	11.3	15.1	43.1	42.3	16.9	17.0	16.8	13.2	13.2
Post-Epidemic Gathering Resumption Index (PEGRI)	19.9	19.9	40.7	20.3	42.3	43.0	19.8	42.8	16.7	20.0	45.1	43.1	21.7	21.8	21.5	18.6	18.5
Post-Epidemic Business Resumption PEBRI(catering)	14.5	14.6	45.7	14.5	45.7	46.3	14.0	45.9	10.8	14.3	48.4	46.6	18.0	18.0	17.9	13.6	13.5

# Survey Result - PENRI

10

