

# POP



---

HONG KONG PUBLIC OPINION PROGRAM

HONG KONG PUBLIC OPINION RESEARCH INSTITUTE

香港民意研究所 之 香港民意研究計劃

---

**Latest Tracking Poll Results**

**Press Release**

**August 25, 2020**

# Contact Information

2

- Date of survey: 17-20/8/2020
- Survey method: Random telephone survey conducted by real interviewers
- Target population: Cantonese-speaking Hong Kong residents aged 18+
- Sample size: 1,020 (including 498 landline and 522 mobile samples)
- Effective response: 60.9%
- Sampling error: Sampling error of percentages not more than +/-4%, that of net values not more than +/-8% and that of ratings not more than +/-2.1 at 95% conf. level
- Weighting method: Rim-weighted according to figures provided by the Census and Statistics Department. The gender-age distribution of the Hong Kong population came from “Mid-year population for 2019”, while the educational attainment (highest level attended) distribution and economic activity status distribution came from “Women and Men in Hong Kong - Key Statistics (2019 Edition)”.

# Survey Topic

3

- **Popularity of Chief Executive**
- **Popularity of HKSAR Government**
  - People's satisfaction in the HKSAR Government
  - People's trust in the HKSAR Government
  - People's appraisals of society's conditions
- **Trust and Confidence Indicators**
  - People's trust in the HKSAR, Beijing Central and Taiwan Governments
  - People's confidence in the future and in “one country, two systems”
- **Public Sentiment Index**

# Survey Result - Popularity of Chief Executive

4

## ● Popularity of Chief Executive

		3-6/8/2020	17-20/8/2020	Change	Record
CE Carrie Lam	Rating	26.9	<b>26.8</b>	<b>▼0.2</b>	Record <b>low</b> since Mar. 2020
	Vote of confidence	19%	<b>24%</b>	<b>▲5% *</b>	Record <b>high</b> since Jul. 2019
	Vote of no confidence	72%	<b>70%</b>	<b>▼3%</b>	Record <b>low</b> since Jul. 2020
	Net approval rate	-54%	<b>-46%</b>	<b>▲8% *</b>	Record <b>high</b> since Jul. 2019

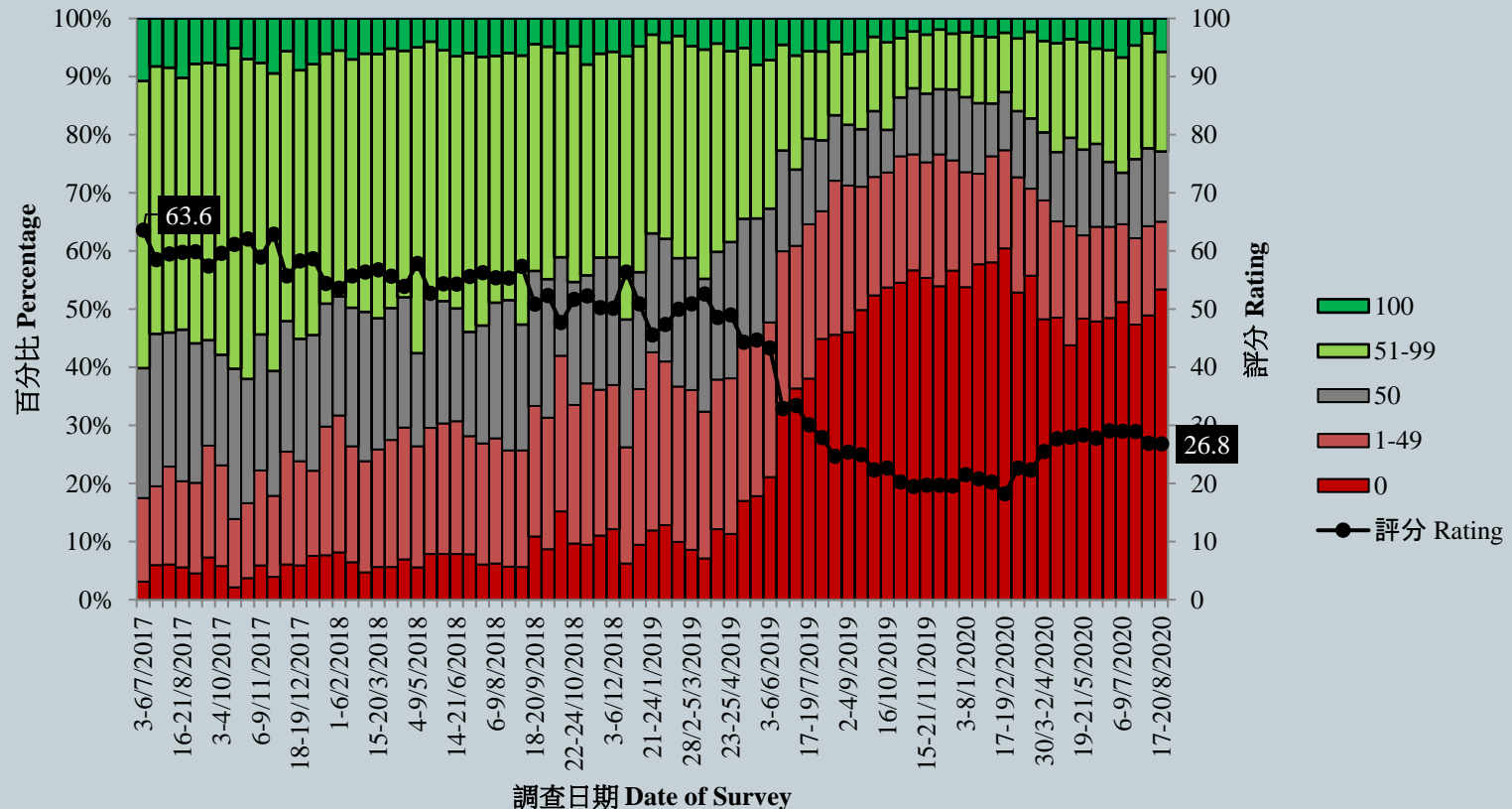
- Our latest survey shows that the popularity rating of CE Carrie Lam now stands at 26.8 marks, which has not changed much from half a month ago. 53% participants give her 0 rating. Her approval rate is 24%, disapproval rate 70%, giving a net popularity of negative 46 percentage points, registering a significant increase of 8 percentage points since half a month ago.

\* Significant change

# Survey Result - Popularity of Chief Executive

6

特首林鄭月娥評分 (按次計算)  
Rating for Chief Executive Carrie Lam (Per Poll)  
(7/2017 – 8/2020)



# Survey Topic

9

- Popularity of Chief Executive
- Popularity of HKSAR Government
  - People's satisfaction in the HKSAR Government
  - People's trust in the HKSAR Government
  - People's appraisals of society's conditions
- Trust and Confidence Indicators
  - People's trust in the HKSAR, Beijing Central and Taiwan Governments
  - People's confidence in the future and in "one country, two systems"
- Public Sentiment Index

# Survey Result - Popularity of HKSAR Government

10

## ● People's satisfaction in the HKSAR Government

	20-24/7/2020	17-20/8/2020	Change	Record
Satisfaction rate	19%	<b>20%</b>	<b>▲1%</b>	Record <b>high</b> since Apr. 2020
Dissatisfaction rate	65%	<b>65%</b>	<b>▲&lt;1%</b>	Record <b>high</b> since Jun. 2020
Net satisfaction rate	-46%	<b>-45%</b>	<b>▲1%</b>	Record <b>high</b> since May 2019
Mean value	2.0	<b>2.1</b>	<b>▲&lt;0.1</b>	Record <b>high</b> since May 2019

- Regarding the HKSAR Government, the latest satisfaction rate is 20%, whereas 65% were dissatisfied, thus net satisfaction stands at negative 45 percentage points. The mean score is 2.1, meaning close to “quite dissatisfied” in general.

# Survey Result - Popularity of HKSAR Government

11

## ● People's trust in the HKSAR Government

	20-24/7/2020	17-20/8/2020	Change	Record
Trust	25%	<b>30%</b>	<b>▲5%</b>	Record <b>high</b> since May 2019
Distrust	61%	<b>59%</b>	<b>▼2%</b>	Record <b>low</b> since Jun. 2020
Net trust	-35%	<b>-29%</b>	<b>▲6%</b>	Record <b>high</b> since May 2019
Mean value	2.2	<b>2.4</b>	<b>▲0.1</b>	Record <b>high</b> since Jun. 2019

- Regarding people's trust in the HKSAR Government, 30% of the respondents expressed trust, 59% expressed distrust. The net trust value is negative 29 percentage points. The mean score is 2.4, meaning between "quite distrust" and "half-half" in general. The figures above are more or less the same as last month.



# Survey Result - Popularity of HKSAR Government

12

## ● People's appraisals of society's conditions

	20-24/7/2020	17-20/8/2020	Change	Record
Livelihood condition	-51%	<b>-57%</b>	<b>▼7% *</b>	Record <b>low</b> since May 2020
Economic condition	-52%	<b>-61%</b>	<b>▼9% *</b>	Record <b>low</b> since May 2020
Political condition	-70%	<b>-68%</b>	<b>▲1%</b>	Record <b>high</b> since May 2019

- People's net satisfaction rates with the current livelihood, economic and political conditions are negative 57, negative 61 and negative 68 percentage points respectively. People's net satisfaction rates with the livelihood and economic conditions have dropped significantly from a month ago.

\* Significant change

# Survey Topic

13

- Popularity of Chief Executive
- Popularity of HKSAR Government
  - People's satisfaction in the HKSAR Government
  - People's trust in the HKSAR Government
  - People's appraisals of society's conditions
- **Trust and Confidence Indicators**
  - People's trust in the HKSAR, Beijing Central and Taiwan Governments
  - People's confidence in the future and in “one country, two systems”
- Public Sentiment Index

# Survey Result - Trust and Confidence Indicators

14

- **People's trust in the HKSAR, Beijing Central and Taiwan Governments**

	17-19/2/2020 <sup>^</sup>	17-20/8/2020	Change	Record
Net trust in HKSAR Government (Repeated listing)	-35%	<b>-29%</b>	<b>▲6%</b>	Record <b>high</b> since May 2019
Net trust in Beijing Government	-43%	<b>-29%</b>	<b>▲14% *</b>	Record <b>high</b> since Feb. 2019
Net trust in Taiwan Government	10%	<b>2%</b>	<b>▼9%</b>	Record <b>low</b> since Aug. 2019

<sup>^</sup> Last survey period of net trust in HKSAR Government: 20-24/7/2020

- Regarding people's trust in governments, the net trust in the HKSAR Government, the Beijing Central Government and the Taiwan Government are negative 29, negative 29 and positive 2 percentage points respectively. Net trust in the Beijing Central Government has dramatically rebounded from the historical low registered half a year ago.

\* Significant change

# Survey Result - Trust and Confidence Indicators

15

- **People’s confidence in the future and in “one country, two systems”**

	17-19/2/2020	17-20/8/2020	Change	Record
Net confidence in HK’s future	-44%	<b>-19%</b>	<b>▲25% *</b>	Record <b>high</b> since Aug. 2019
Net confidence in China’s future	-13%	<b>-4%</b>	<b>▲8%</b>	Record <b>high</b> since Feb. 2019
Net confidence in “one country, two systems”	-41%	<b>-26%</b>	<b>▲15% *</b>	Record <b>high</b> since Feb. 2019

- As for the confidence indicators, net confidence in the future of China stands at negative 4 percentage points. On the other hand, net confidence in the future of Hong Kong and in “one country, two systems” have significantly rebounded from the historical lows registered half a year ago to negative 19 and negative 26 percentage points respectively.

\* Significant change

# Survey Topic

16

- Popularity of Chief Executive
- Popularity of HKSAR Government
  - People's satisfaction in the HKSAR Government
  - People's trust in the HKSAR Government
  - People's appraisals of society's conditions
- Trust and Confidence Indicators
  - People's trust in the HKSAR, Beijing Central and Taiwan Governments
  - People's confidence in the future and in “one country, two systems”
- Public Sentiment Index

# Survey Result - Public Sentiment Index

17

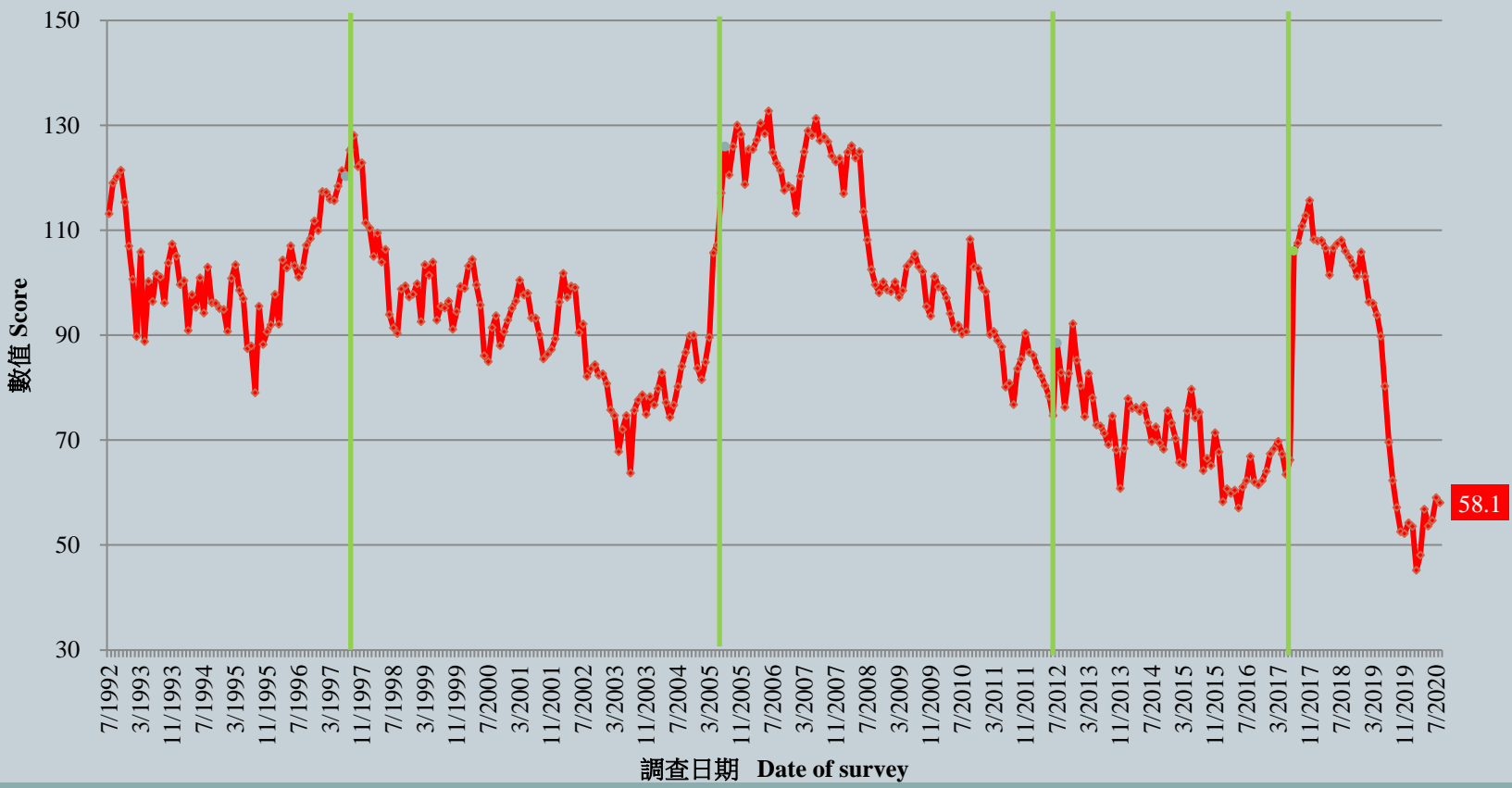
## ● Public Sentiment Index (PSI)

	6/8/2020	20/8/2020	Change	Record
Public Sentiment Index (PSI)	58.5	<b>57.6</b>	<b>▼0.9</b>	Record <b>low</b> since Jun. 2020
Government Appraisal (GA)	61.6	<b>64.8</b>	<b>▲3.2</b>	Record <b>high</b> since Jul. 2019
Society Appraisal (SA)	56.9	<b>52.2</b>	<b>▼4.8</b>	Record <b>low</b> since Jun. 2020

- All PSI, GA and SA scores range between 0 to 200, with 100 meaning normal.
- The latest PSI stands at 57.6, down by 0.9 point from early August. It can be considered as among the worst 1% across the past 20 years or so. Two component scores of PSI can both be considered as among the worst 1% across the past 20 years or so.

# Survey Result - Public Sentiment Index

民情指數 (按月計算)  
Public Sentiment Index (monthly average)  
(7/1992 - 8/2020)



# POP



---

HONG KONG PUBLIC OPINION PROGRAM

HONG KONG PUBLIC OPINION RESEARCH INSTITUTE

香港民意研究所 之 香港民意研究計劃

---

**Community Democracy Project -**

**Community Health Module**

**Press Release**

**August 25, 2020**



# Contact Information - PENRI

20

	<b>HKPOP Panel</b>
Date of survey	August 17, 3pm – August 24, 3pm
Survey method	Online survey
Target population	Hong Kong residents aged 12+
Total sample size	15,720
Response rate	19.0%
Sampling error	Sampling error of percentages at +/-1% at 95% confidence level
Weighting method	The figures are rim-weighted according to 1) gender-age distribution of Hong Kong population and by District Councils population figures from Census and Statistics Department; 2) Voting results of District Councils Election from Registration and Electoral Office; 3) rating distribution of Chief Executive from regular tracking surveys.

# Survey Result - PENRI

21

<b>Date of Publishing</b>	<b>9/8</b>	<b>10/8</b>	<b>11/8</b>	<b>12/8</b>	<b>13/8</b>	<b>14/8</b>	<b>15/8</b>	<b>16/8</b>	<b>17/8</b>	<b>18/8</b>	<b>19/8</b>	<b>20/8</b>	<b>21/8</b>	<b>22/8</b>	<b>23/8</b>	<b>24/8</b>	<b>25/8</b>
<b>Imported cases(Ytd)</b>	<b>2</b>	<b>9</b>	<b>2</b>	<b>1</b>	<b>1</b>	<b>4</b>	<b>2</b>	<b>7</b>	<b>4</b>	<b>13</b>	<b>1</b>	<b>3</b>	<b>1</b>	<b>9</b>	<b>2</b>	<b>6</b>	<b>2</b>
<b>Local infected cases(Ytd)</b>	<b>67</b>	<b>63</b>	<b>67</b>	<b>32</b>	<b>61</b>	<b>65</b>	<b>46</b>	<b>39</b>	<b>70</b>	<b>31</b>	<b>35</b>	<b>23</b>	<b>17</b>	<b>18</b>	<b>24</b>	<b>19</b>	<b>7</b>
Post-Epidemic Work Resumption Index (PEWRI)	6.6	6.6	6.6	7.1	6.9	7.0	6.9	6.9	2.8	6.8	8.3	8.5	10.3	9.6	9.4	9.4	35.1
Post-Epidemic Public-Facilities Re-open Index (PEPRI)	8.9	8.9	8.7	8.5	8.6	8.6	8.8	8.8	5.2	8.7	11.3	11.4	12.8	12.6	12.7	12.8	39.0
Post-Epidemic Gathering Resumption Index (PEGRI)	14.6	14.7	14.9	15.8	15.7	15.7	15.7	15.6	11.5	15.5	18.0	18.1	19.9	19.2	19.3	19.3	44.0
Post-Epidemic Business Resumption Index PEBRI(catering)	12.4	12.4	12.4	11.4	11.8	11.8	11.7	11.6	7.3	11.5	14.9	15.0	16.6	16.1	16.0	16.2	45.9

# Survey Result - PENRI

22

