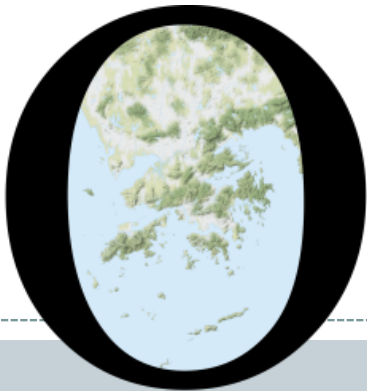


POP



HONG KONG PUBLIC OPINION PROGRAM

HONG KONG PUBLIC OPINION RESEARCH INSTITUTE

香港民意研究所 之 香港民意研究計劃

Latest Tracking Poll Results

Press Release

July 17, 2020

Contact Information

2

- Date of survey: 6-9/7/2020
- Survey method: Random telephone survey conducted by real interviewers
- Target population: Cantonese-speaking Hong Kong residents aged 18+
- Sample size: 1,001 (including 492 landline and 509 mobile samples)
- Effective response: 52.4%
- Sampling error: Sampling error of percentages not more than +/-4%, that of net values not more than +/-7% and that of ratings not more than +/-2.9 at 95% conf. level
- Weighting method: Rim-weighted according to figures provided by the Census and Statistics Department. The gender-age distribution of the Hong Kong population came from “Mid-year population for 2019”, while the educational attainment (highest level attended) distribution and economic activity status distribution came from “Women and Men in Hong Kong - Key Statistics (2019 Edition)”.

Survey Topic

3

- Popularity of Chief Executive
- Popularity of Principal Officials

Survey Result - Popularity of Chief Executive

4

• Popularity of Chief Executive

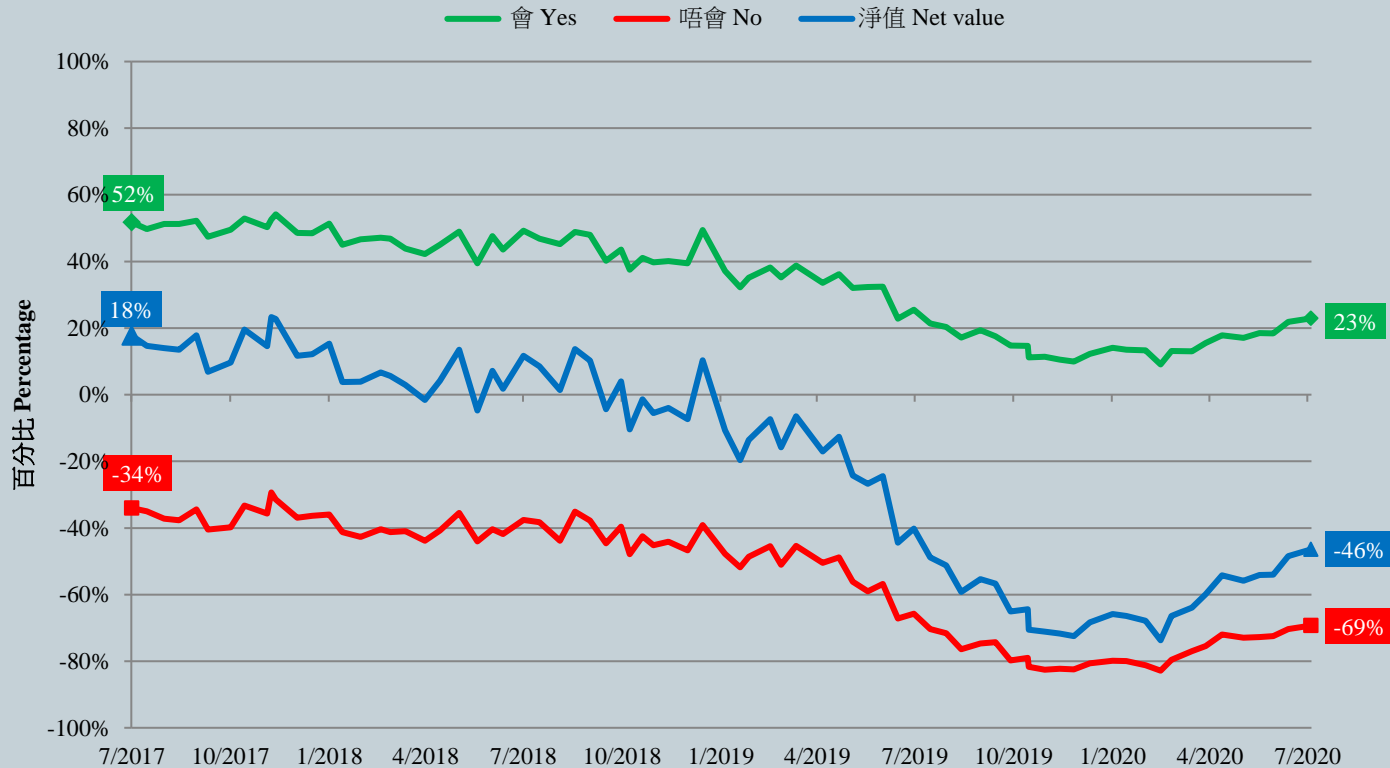
		15-18/6/2020	6-9/7/2020	Change	Record
CE Carrie Lam	Rating	29.0	29.0	▼0.1	Record low since Jun. 2020
	Vote of confidence	22%	23%	▲1%	Record high since Jul. 2019
	Vote of no confidence	70%	69%	▼1%	Record low since Jul. 2019
	Net approval rate	-48%	-46%	▲2%	Record high since Jul. 2019

- Our latest survey shows that the popularity rating of CE Carrie Lam now stands at 29.0 marks. 51% participants give her 0 rating. Her approval rate is 23%, disapproval rate 69%, giving a net popularity of negative 46 percentage points. All popularity figures have remained basically the same as those half a month ago.

Survey Result - Popularity of Chief Executive

5

市民對林鄭月娥出任特首的假設投票結果 (按次計算)
Hypothetical Voting for Carrie Lam as the Chief Executive (Per Poll)
(7/2017 – 7/2020)



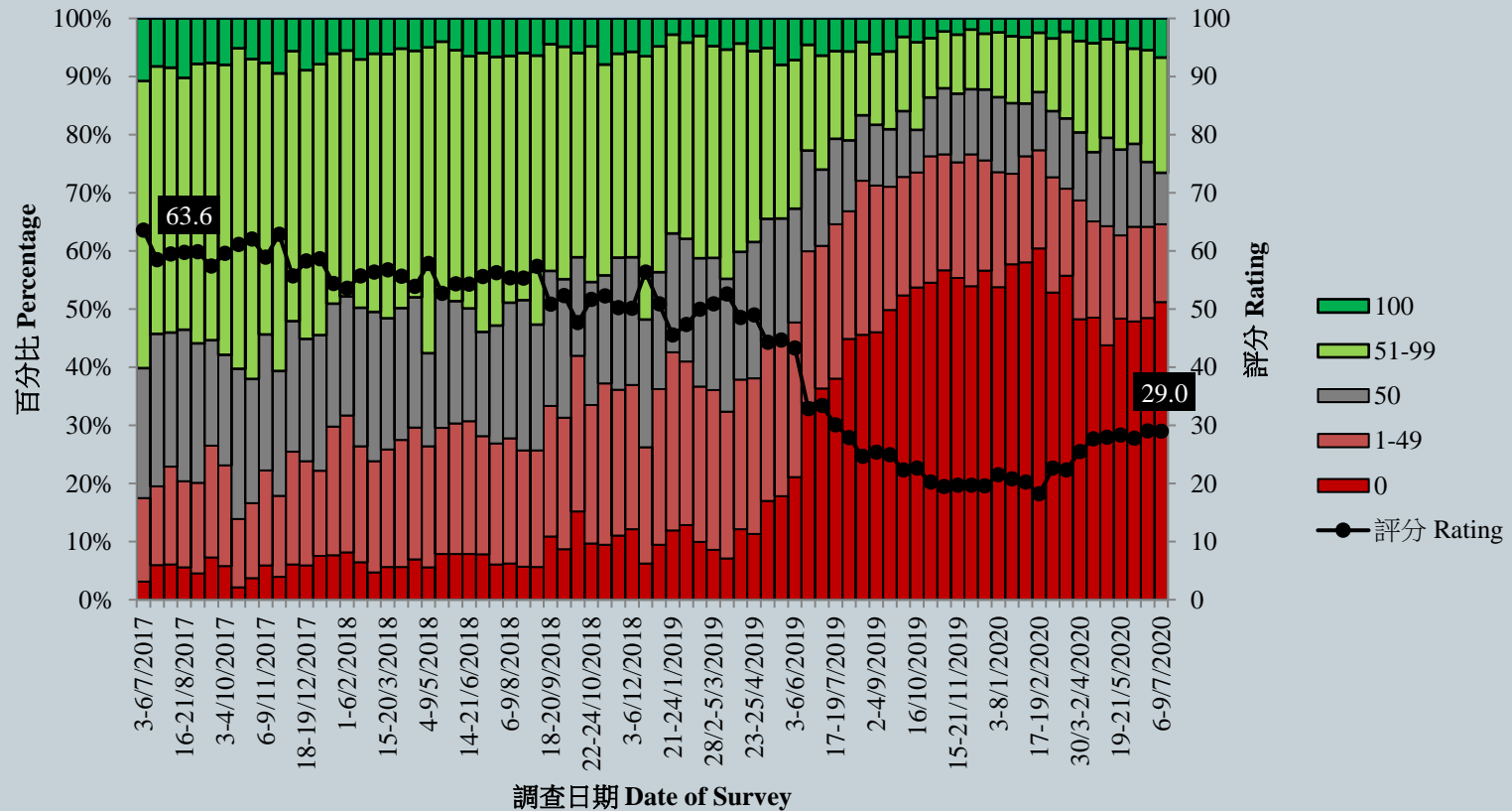
調查日期 Date of Survey

『唔會』百分比以負向表示。
Percentage of 'No' is presented as negative

Survey Result - Popularity of Chief Executive

6

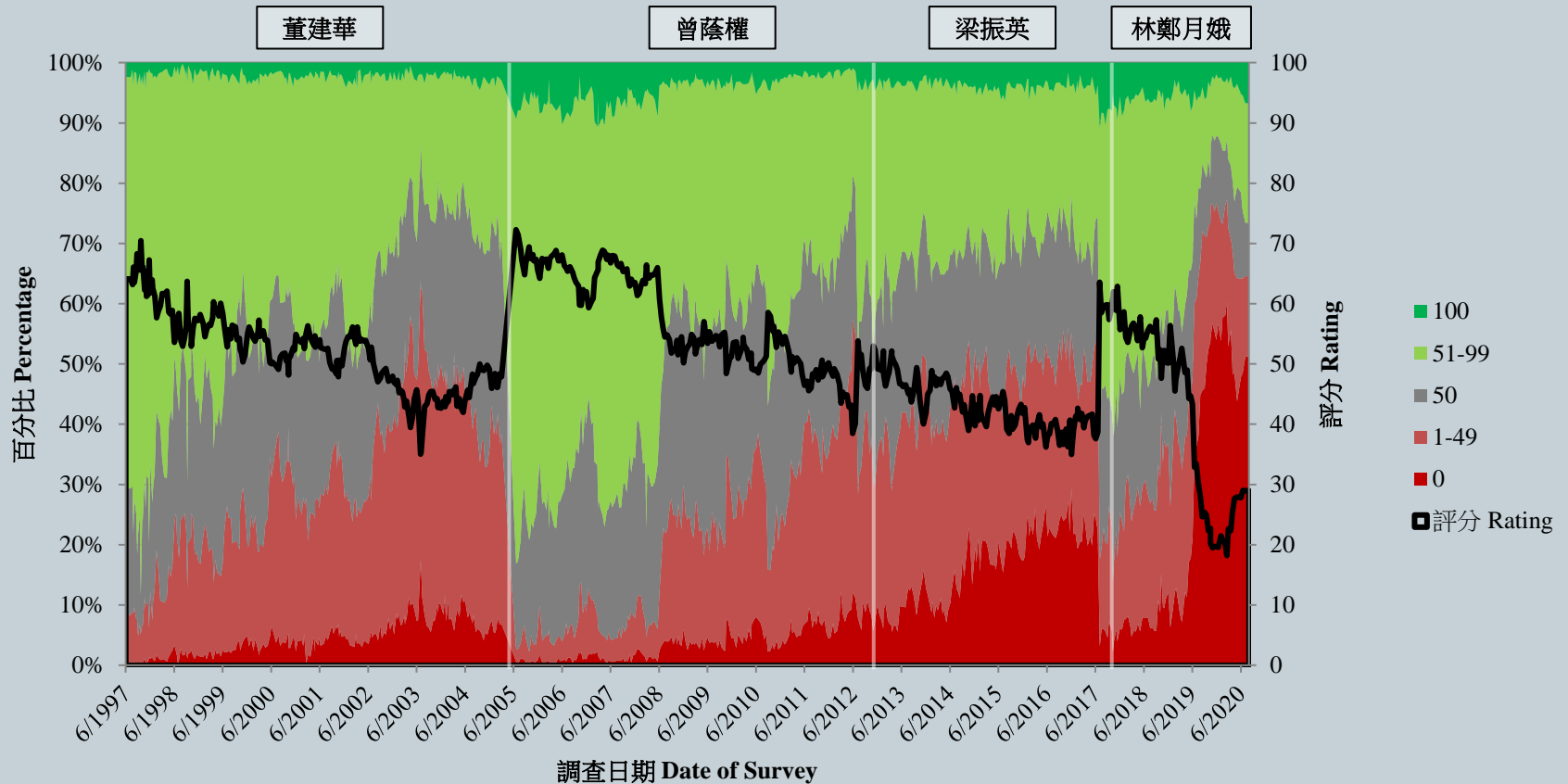
特首林鄭月娥評分 (按次計算)
Rating for Chief Executive Carrie Lam (Per Poll)
(7/2017 – 7/2020)



Survey Result - Popularity of Chief Executive

7

特首評分 (按次計算)
Rating for Chief Executives (Per Poll)
(7/1997 – 7/2020)



Survey Topic

9

- Popularity of Chief Executive
- Popularity of Principal Officials

Survey Result - Popularity of Principal Officials

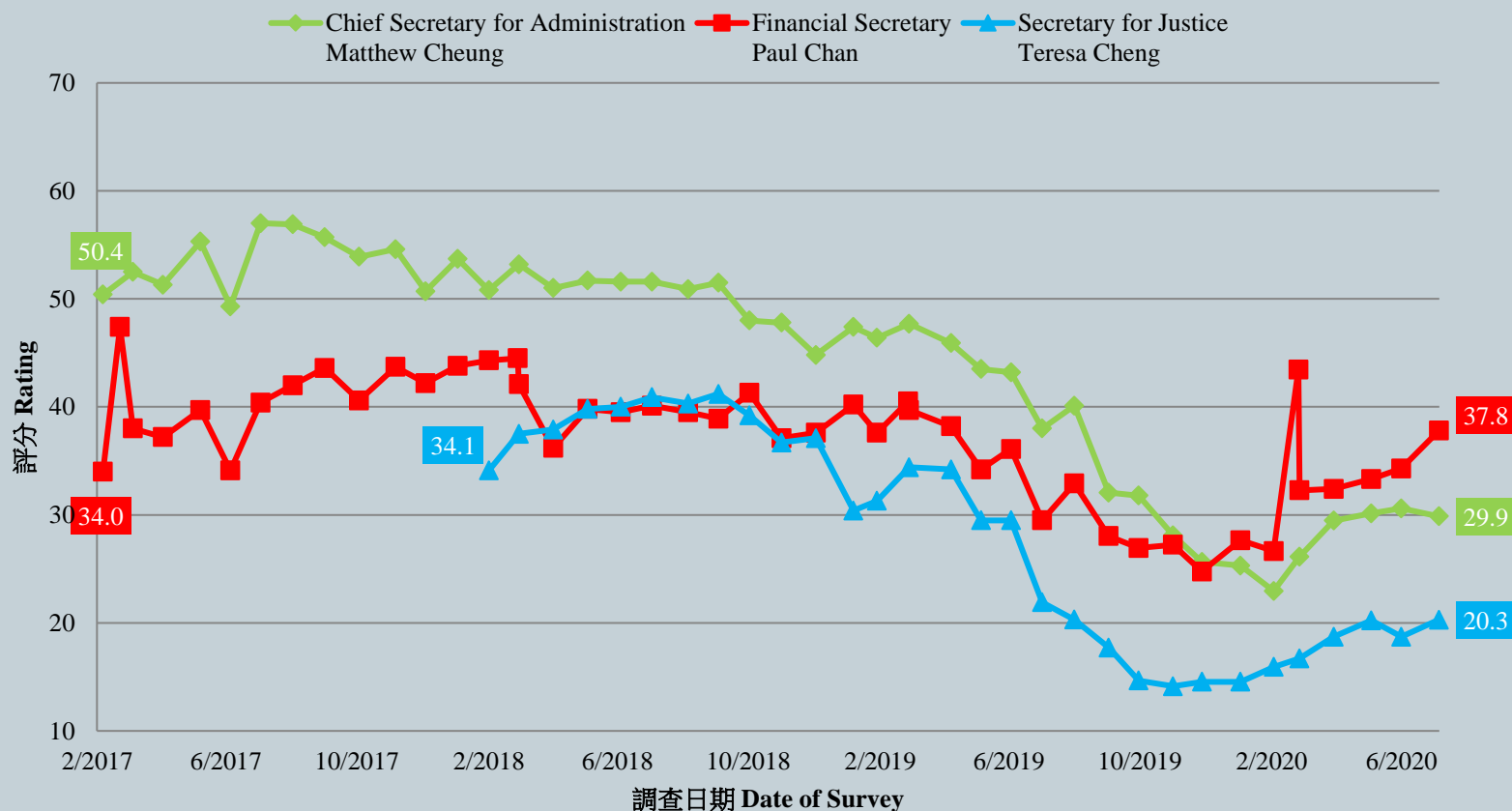
10

• Secretaries of Departments

		1-4/6/2020	6-9/7/2020	Change	Record
Chief Secretary for Administration Matthew Cheung	Rating	30.6	29.9	▼0.7	Record low since Mar. 2020
	Net approval rate	-32%	-33%	▼1%	Record low since Mar. 2020
Financial Secretary Paul Chan	Rating	34.3	37.8	▲3.5	Record high since Feb. 2020
	Net approval rate	-21%	-16%	▲5%	Record high since Feb. 2020
Secretary for Justice Teresa Cheng	Rating	18.7	20.3	▲1.6	Record high since Aug. 2019
	Net approval rate	-61%	-57%	▲4%	Record high since Aug. 2019

Survey Result - Popularity of Principal Officials

各司長評分 - 綜合圖表 (按次計算)
Ratings of Secretaries of Departments Combined (per poll)
(2/2017 – 7/2020)



Survey Result - Popularity of Principal Officials

12

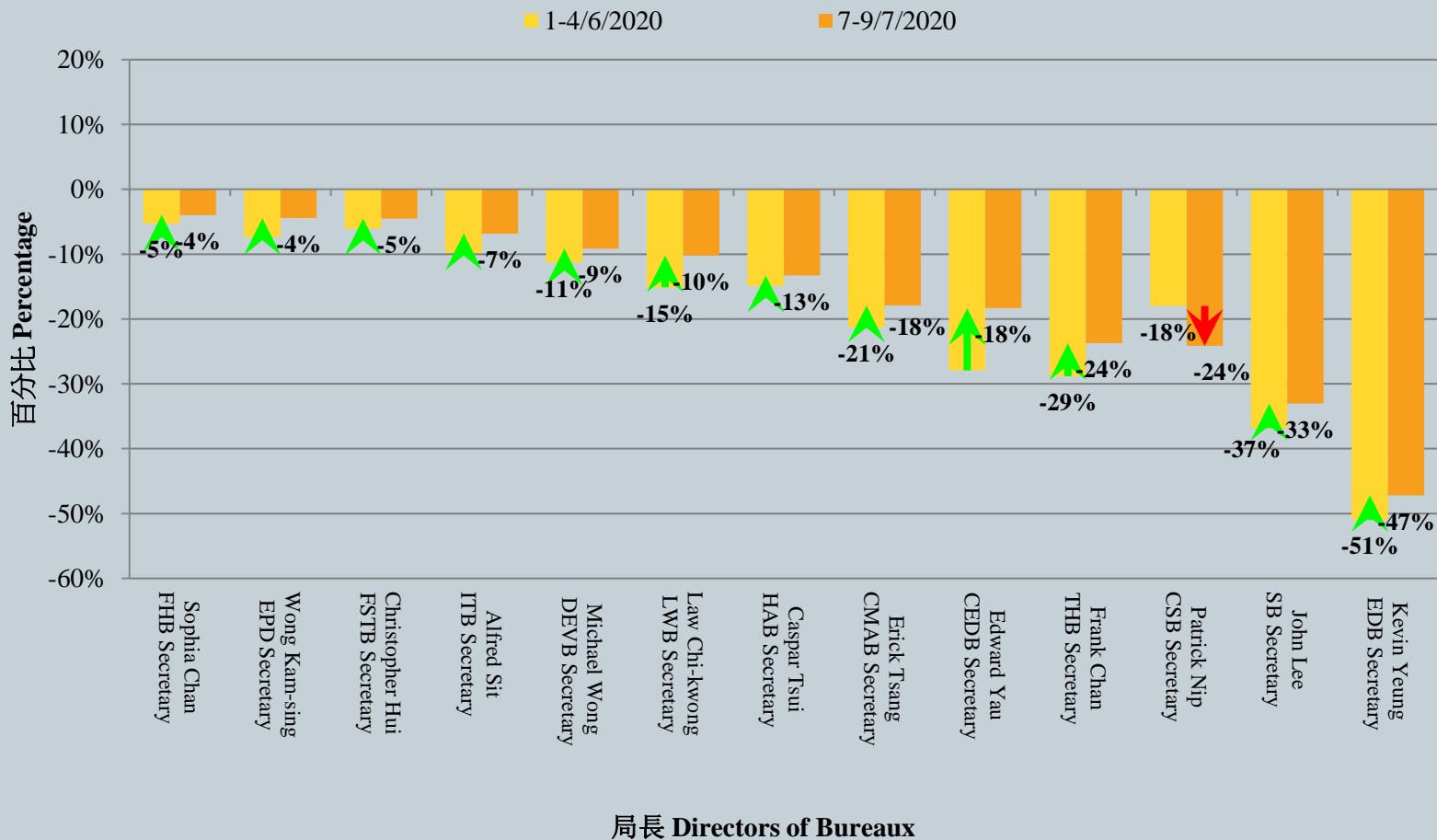
• Directors of Bureaux - Net approval rate

	1-4/6/2020	6-9/7/2020	Change	Record
Secretary for Food and Health Sophia Chan	-5%	-4%	▲1%	Record high since Sept. 2019
Secretary for the Environment Wong Kam-sing	-7%	-4%	▲3%	Record high since May 2020
Secretary for Financial Services and the Treasury Christopher Hui	-6%	-5%	▲2%	Record high since May 2020
Secretary for Innovation and Technology Alfred Sit	-10%	-7%	▲3%	Record high since May 2020
Secretary for Development Michael Wong	-11%	-9%	▲2%	Record high since May 2020
Secretary for Labour and Welfare Law Chi-kwong	-15%	-10%	▲5%	Record high since Sept. 2019
Secretary for Home Affairs Caspar Tsui	-15%	-13%	▲2%	Record high since May 2020
Secretary for Constitutional and Mainland Affairs Erick Tsang	-21%	-18%	▲3%	Record high since May 2020
Secretary for Commerce and Economic Development Edward Yau	-28%	-18%	▲10%*	Record high since Mar. 2020
Secretary for Transport and Housing Frank Chan	-29%	-24%	▲5%	Record high since May 2020
Secretary for the Civil Service Patrick Nip	-18%	-24%	▼6%	All-time record low since May 2020
Secretary for Security John Lee	-37%	-33%	▲4%	Record high since Jun. 2019
Secretary for Education Kevin Yeung	-51%	-47%	▲4%	Record high since May 2020

* Significant change

Survey Result - Popularity of Principal Officials

各局長假想投票結果 (支持率淨值) - 綜合圖表
Hypothetical Voting of Directors of Bureau (Net Approval Rate) - Combined Charts



局長 Directors of Bureaux